

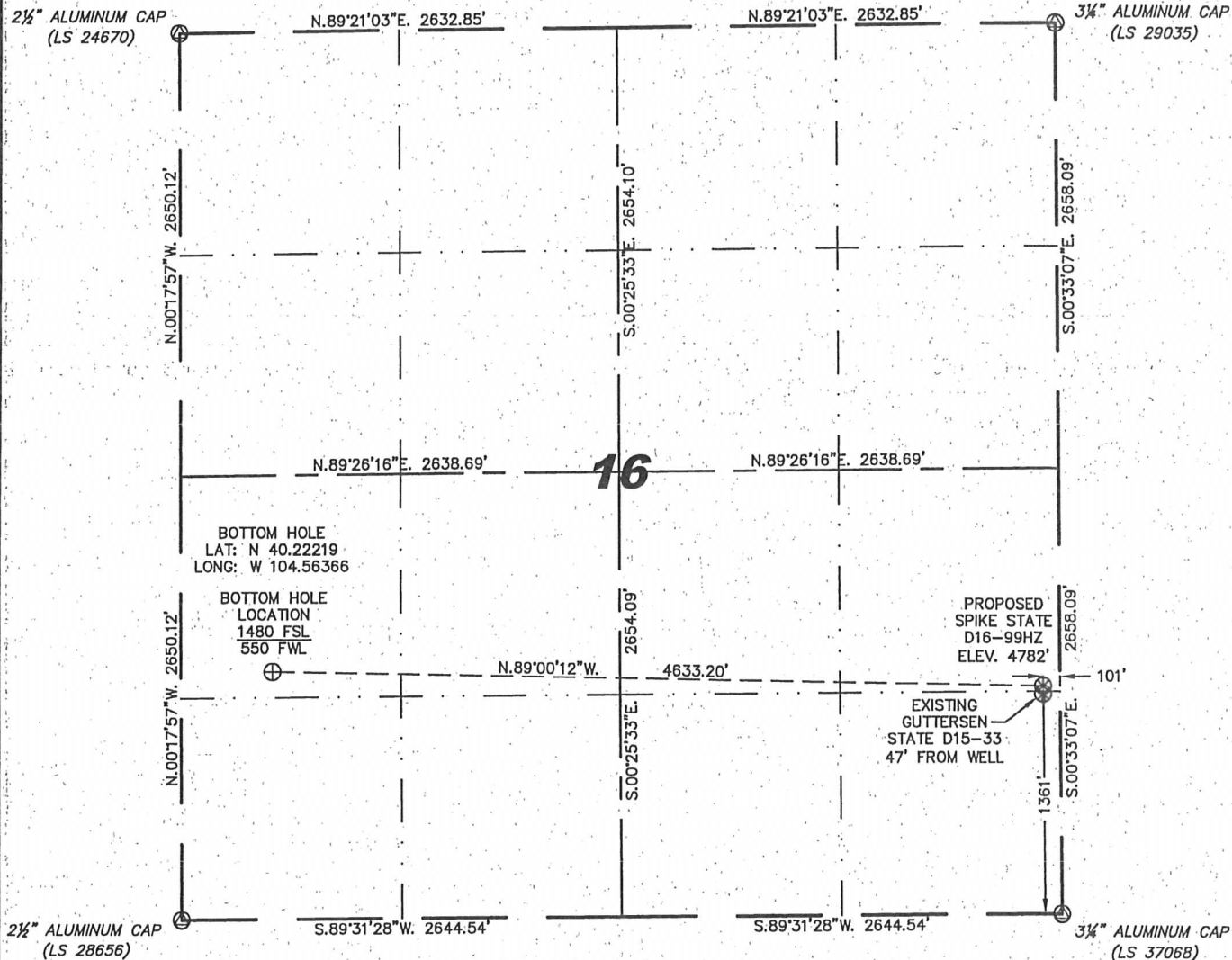
Steil Surveying Services, LLC

1102 West 19th Street P.O. BOX 2073

Cheyenne, Wyoming 82009

WELL LOCATION CERTIFICATE
THIS MAP DOES NOT REPRESENT A BOUNDARY SURVEY

SECTION 16
TOWNSHIP 3 NORTH
RANGE 64 WEST



0 1000

Scale: 1" = 1000'

IN ACCORDANCE WITH A REQUEST FROM BRIAN DeROSE - NOBLE ENERGY INC, STEIL SURVEYING SERVICES, LLC HAS DETERMINED THE LOCATION OF THE SPIKE STATE D16-99HZ WELL TO BE 1361' FSL, 101' FEL, AS MEASURED AT NINETY (90) DEGREES FROM THE SECTION LINES, SECTION 16, TOWNSHIP 3 NORTH, RANGE 64 WEST, 6TH PRINCIPLE MERIDIAN, WELD COUNTY, COLORADO.

I HEREBY CERTIFY THAT THIS WELL LOCATION CERTIFICATE WAS PREPARED BY ME, OR UNDER MY DIRECT SUPERVISION, THAT THE FIELD WORK WAS COMPLETED ON 09/20/2010, FOR AND ON BEHALF OF NOBLE ENERGY INC, THAT IT IS NOT A LAND SURVEY PLAT OR AN IMPROVEMENT SURVEY PLAT, AND THAT IT IS NOT TO BE RELIED UPON FOR ESTABLISHMENT OF FENCE, BUILDING, OR OTHER FUTURE IMPROVEMENT LINES.

NOTES:

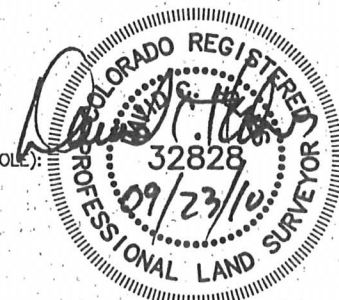
- 1) BASIS OF BEARINGS FOR THIS MAP ARE BASED UPON GPS OBSERVATIONS MADE ON 04/29/2009 BETWEEN MONUMENTS LOCATED AT THE SOUTHEAST SECTION CORNER AND THE NORTHEAST SECTION CORNER OF SAID SECTION AND WITH ALL BEARINGS SHOWN HEREON RELATIVE THERETO.
- 2) ELEVATIONS ARE BASED UPON NGS OPUS SOLUTION NAVD 88 DATUM.
- 3) COORDINATES SHOWN ARE COLORADO STATE PLANE (NORTH ZONE) NAD 83.
- 4) THE NEAREST EXISTING WELL IS: GUTTERSEN STATE D15-33, 47' SOUTH.
- 5) SEE VISIBLE IMPROVEMENTS EXHIBIT FOR ALL IMPROVEMENTS WITHIN 600'.
- 6) THE LOCATION FALLS IN PASTURE LAND.

LATITUDE & LONGITUDE (NAD 83 SURFACE HOLE):
LATITUDE: N 40.22183'
LONGITUDE: W 104.54707'
PDOP: 2.1
QUARTER-QUARTER: NE/4SE/4
NEAREST PROPERTY LINE: 101' TO THE EAST

LEGEND

- (A) FOUND SURVEY MONUMENT PER MONUMENT RECORD - EXCEPTIONS NOTED.
- (C) CALCULATED DIMENSION

NOTICE: According to Colorado law you MUST commence any legal action based upon any defect in this W.L.C. within three years after you first discover such defect. In no event may any action based upon any defect in this W.L.C. be commenced more than ten years from this sold date of the certification shown hereon.



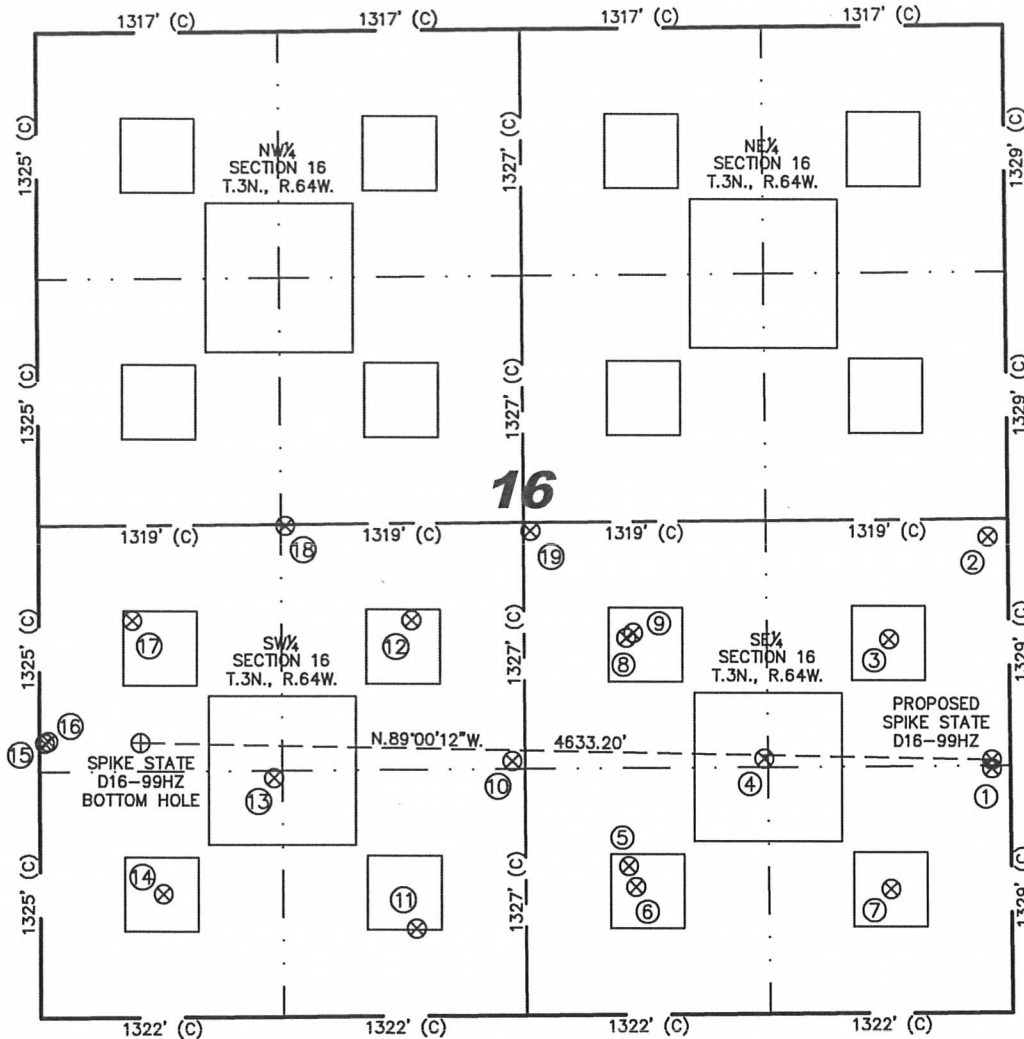
David C. Holmes
Professional Land Surveyor Registration No. 32828
State of Colorado

JOB #: 10086

Completed 09/22/2010

SKETCH - SPIKE STATE D16-99HZ

SECTION 16
TOWNSHIP 3 NORTH
RANGE 64 WEST



- | | |
|--|---|
| ①
GUTTERSEN
STATE D15-33
SE/SE SEC. 16
1314' FSL
102' FEL
EL 4782'
N 40.22171
W 104.54708
PDOP 2.0 | ②
GUTTERSEN
STATE D15-32
NE/SE SEC. 16
2562' FSL
111' FEL
EL 4791'
N 40.22513
W 104.54710
PDOP 2.7 |
| ③
SPIKE STATE
D16-9
NE/SE SEC. 16
2014' FSL
657' FEL
EL 4777'
N 40.22363
W 104.54906
PDOP 1.9 | ④
DIGGIN STATE
D16-23
NW/SE SEC. 16
1374' FSL
1340' FEL
EL 4791'
N 40.22188
W 104.55151
PDOP 2.1 |
| ⑤
GUTTERSEN
STATE D16-15X
SW/SE SEC. 16
800' FSL
2083' FEL
EL 4797'
N 40.22031
W 104.55417
PDOP 3.3 | ⑥
SPIKE STATE
GWS D16-15
SW/SE SEC. 16
687' FSL
2044' FEL
EL 4798'
N 40.22000
W 104.55403
PDOP 3.3 |
| ⑦
SPIKE STATE
GWS D16-16
SE/SE SEC. 16
668' FSL
659' FEL
EL 4786'
N 40.21994
W 104.54908
PDOP 1.8 | ⑧
SPIKE STATE
D16-10
NW/SE SEC. 16
2030' FSL
2085' FEL
EL 4771'
N 40.22368
W 104.55417
PDOP 2.0 |

- | | | | | | | | |
|---|--|---|--|---|---|--|---|
| ⑨
GUTTERSEN
STATE D16-22D
NW/SE SEC. 16
2056' FSL
2046' FEL
EL 4772'
N 40.22376
W 104.55404
PDOP 2.0 | ⑩
GUTTERSEN
STATE D16-24
NE/SW SEC. 16
1370' FSL
2571' FWL
EL 4790'
N 40.22188
W 104.55642
PDOP 2.1 | ⑪
SPIKE STATE
GWS D16-14
SE/SW SEC. 16
471' FSL
2045' FWL
EL 4786'
N 40.21941
W 104.55832
PDOP 2.5 | ⑫
SPIKE STATE
D16-11
NE/SW SEC. 16
2133' FSL
2026' FWL
EL 4771'
N 40.22397
W 104.55836
PDOP 2.3 | ⑬
SPIKE STATE
GWS D16-13J
SW/SW SEC. 16
1287' FSL
1276' FWL
EL 4766'
N 40.22166
W 104.56106
PDOP 2.0 | ⑭
DIGGIN STATE
D16-13
SW/SW SEC. 16
665' FSL
672' FWL
EL 4763'
N 40.21996
W 104.56324
PDOP 2.1 | ⑮
GUTTERSEN
STATE D16-33
NW/SW SEC. 16
1480' FSL
29' FWL
EL 4753'
N 40.22219
W 104.56552
PDOP 1.9 | ⑯
GUTTERSEN
STATE D16-32D
NW/SW SEC. 16
1490' FSL
49' FWL
EL 4753'
N 40.22222
W 104.56545
PDOP 1.9 |
| ⑰
SPIKE STATE
GWS D16-12
NW/SW SEC. 16
2140' FSL
509' FWL
EL 4768'
N 40.22400
W 104.56379
PDOP 2.0 | ⑱
GUTTERSEN
STATE D16-20
NE/SW SEC. 16
2645' FSL
1345' FWL
EL 4757'
N 40.22538
W 104.56079
PDOP 1.7 | ⑲
GUTTERSEN
STATE D16-21
NW/SE SEC. 16
2608' FSL
2600' FEL
(RECORD
LOCATION) | | | | | |

NOTES:

- THIS SKETCH DOES NOT REPRESENT A BOUNDARY SURVEY.
- THE DATUM FOR THE LATITUDES AND LONGITUDES ON THIS SKETCH IS NAD83.

