

T5S, R95W, 6th P.M.

Encana OIL & GAS (USA) INC.

Well location, N. PARACHUTE EF01C-34 P27 595 (SURFACE LOCATION), located as shown in the SE 1/4 SE 1/4 of Section 27, T5S, R95W, 6th P.M., Garfield County, Colorado.

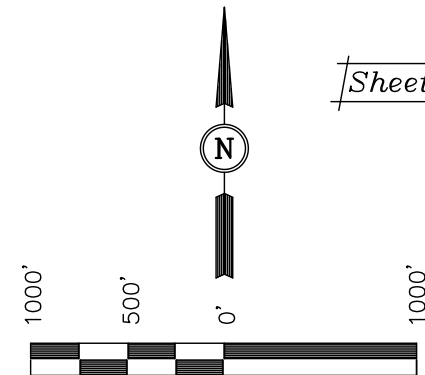
BASIS OF ELEVATION

SPOT ELEVATION AT THE NORTHWEST CORNER OF SECTION 30, T5S, R95W, 6th P.M. TAKEN FROM THE FORKED GULCH QUADRANGLE, COLORADO, GARFIELD COUNTY, 7.5 MINUTE SERIES (TOPOGRAPHICAL MAP) PUBLISHED BY THE UNITED STATES DEPARTMENT OF THE INTERIOR, GEOLOGICAL SURVEY. SAID ELEVATION IS MARKED AS BEING 5966 FEET.

BASIS OF BEARINGS

BASIS OF BEARINGS IS A G.P.S. OBSERVATION.

Sheet 1nn of 10



SCALE
CERTIFICATE

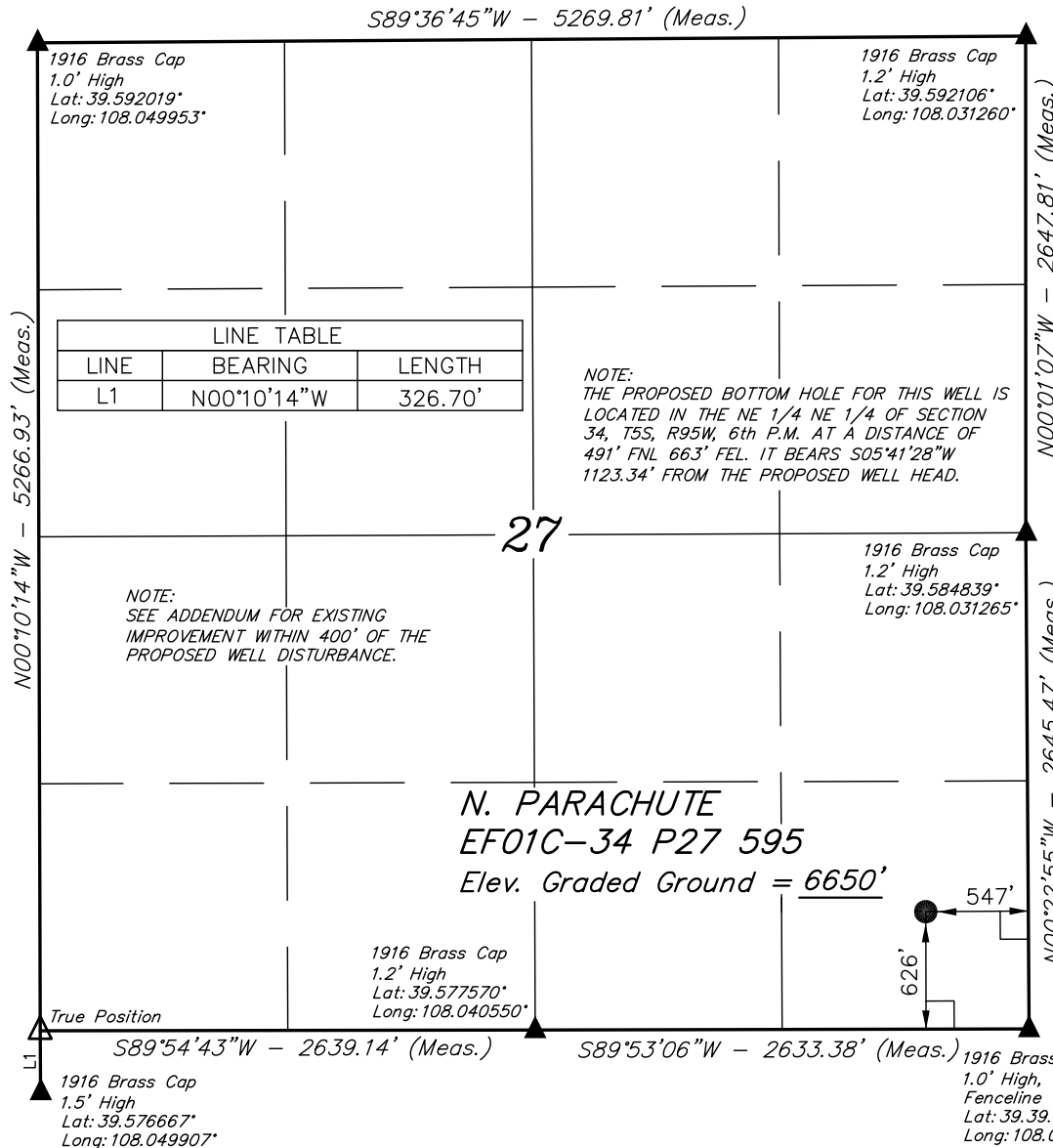
THIS IS TO CERTIFY THAT THE ABOVE PLAT WAS PREPARED AND LOCATION AS SHOWN WAS STAKED ON THE GROUND FROM FIELD NOTES OF ACTUAL SURVEYS MADE BY ME OR UNDER MY SUPERVISION AND THAT THE SAME ARE TRUE AND CORRECT TO THE BEST OF MY KNOWLEDGE AND BELIEF.

Revised: 11-05-10 D.R.B.
Revised: 09-15-10 D.R.B.
Revised: 07-29-10 D.R.B.

REGISTERED LAND SURVEYOR
REGISTRATION NO. 17492
STATE OF COLORADO

UINTAH ENGINEERING & LAND SURVEYING
85 SOUTH 200 EAST - VERNAL, UTAH 84078
(435) 789-1017

1" = 1000'	DATE SURVEYED: 11-01-08	DATE DRAWN: 12-03-08
B.H. S.K. D.R.B.	REFERENCES G.L.O. PLAT	
WEATHER COOL	FILE Encana OIL & GAS (USA) INC.	



LEGEND:

- └─┘ = 90° SYMBOL
- = PROPOSED WELL HEAD.
- ▲ = SECTION CORNERS LOCATED.

PDOP = 2.7

NAD 83 (SURFACE LOCATION)	
LATITUDE	= 39°34'45.46" (39.579294)
LONGITUDE	= 108°01'59.39" (108.033164)
NAD 27 (SURFACE LOCATION)	
LATITUDE	= 39°34'45.55" (39.579319)
LONGITUDE	= 108°01'57.12" (108.032533)

T5S, R95W, 6th P.M.

Encana OIL & GAS (USA) INC.

Well location, N. PARACHUTE EF01C-34 P27 595 (TARGET BOTTOM HOLE), located as shown in the NE 1/4 NE 1/4 of Section 34, T5S, R95W, 6th P.M., Garfield County, Colorado.

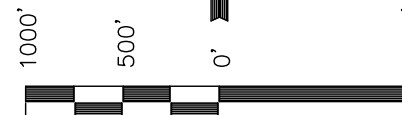
BASIS OF ELEVATION

SPOT ELEVATION AT THE NORTHWEST CORNER OF SECTION 30, T5S, R95W, 6th P.M. TAKEN FROM THE FORKED GULCH QUADRANGLE, COLORADO, GARFIELD COUNTY, 7.5 MINUTE SERIES (TOPOGRAPHICAL MAP) PUBLISHED BY THE UNITED STATES DEPARTMENT OF THE INTERIOR, GEOLOGICAL SURVEY. SAID ELEVATION IS MARKED AS BEING 5966 FEET.

BASIS OF BEARINGS

BASIS OF BEARINGS IS A G.P.S. OBSERVATION.

Sheet 100 of 10



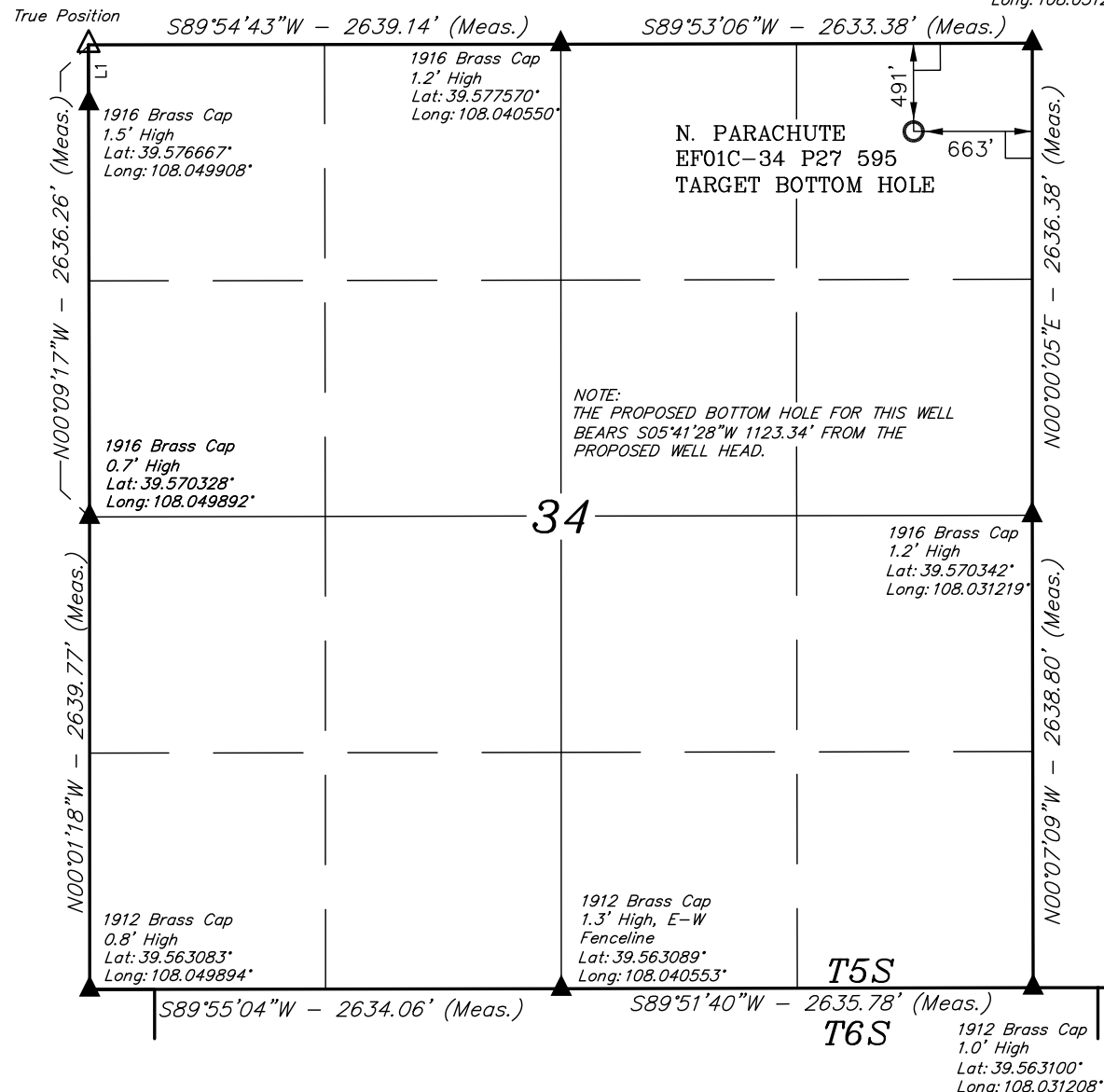
SCALE
CERTIFICATE

THIS IS TO CERTIFY THAT THE ABOVE PLAT WAS PREPARED AND LOCATION AS SHOWN WAS STAKED ON THE GROUND FROM FIELD NOTES OF ACTUAL SURVEYS MADE BY ME OR UNDER MY SUPERVISION AND THAT THE SAME ARE TRUE AND CORRECT TO THE BEST OF MY KNOWLEDGE AND BELIEF.

REGISTERED LAND SURVEYOR
REGISTRATION NO. 17492
STATE OF COLORADO

Revised: 11-05-10 D.R.B.
Revised: 09-15-10 D.R.B.

UINTAH ENGINEERING & LAND SURVEYING
85 SOUTH 200 EAST - VERNAL, UTAH 84078
(435) 789-1017



LEGEND:

- └─┘ = 90° SYMBOL
- = PROPOSED WELL HEAD.
- ▲ = SECTION CORNERS LOCATED.

NAD 83 (TARGET BOTTOM HOLE)	
LATITUDE	= 39°34'34.42" (39.576228)
LONGITUDE	= 108°02'00.82" (108.033561)
NAD 27 (TARGET BOTTOM HOLE)	
LATITUDE	= 39°34'34.50" (39.576250)
LONGITUDE	= 108°01'58.55" (108.032931)

1" = 1000'	DATE SURVEYED: 11-01-08	DATE DRAWN: 12-03-08
B.H. S.K. D.R.B.	REFERENCES G.L.O. PLAT	
WEATHER COOL	FILE Encana OIL & GAS (USA) INC.	