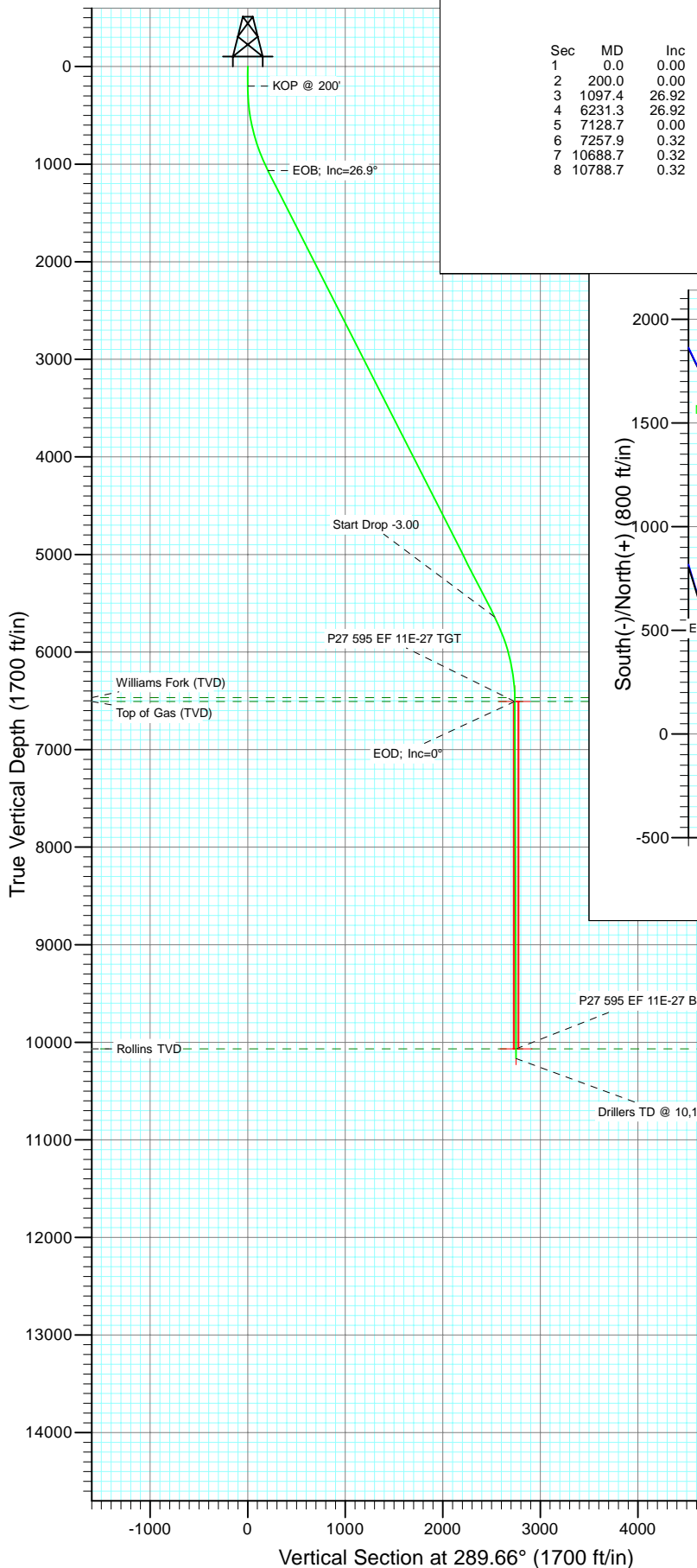


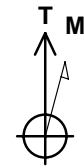
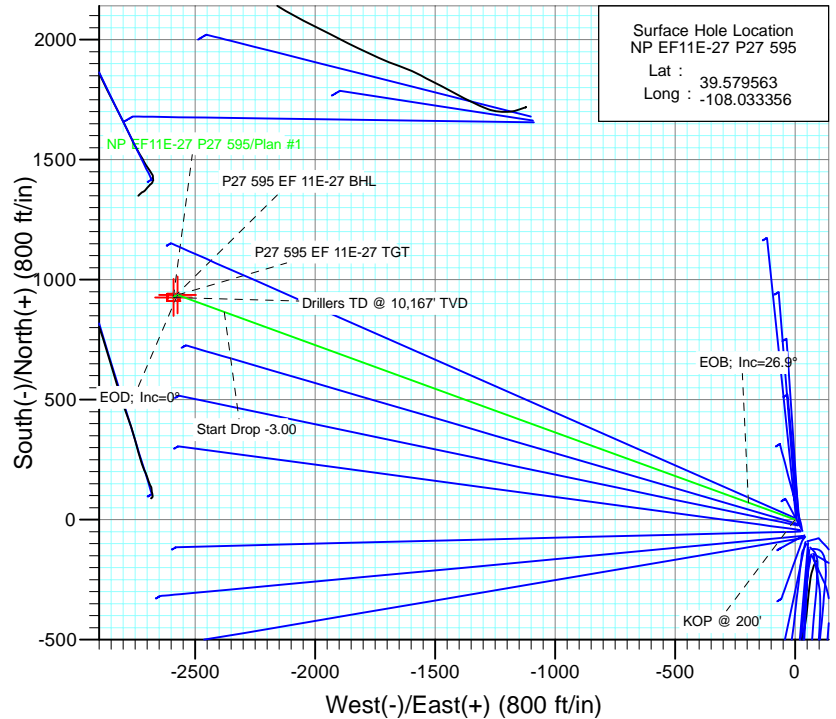


Project: North Piceance  
Site: P27 595 (S27-T5S-R95W)  
Well: NP EF11E-27 P27 595  
Wellbore: DD  
Design: Plan #1



#### SECTION DETAILS

Sec	MD	Inc	Azi	TVD	+N/-S	+E/-W	Dleg	TFace	VSect	Target
1	0.0	0.00	0.00	0.0	0.0	0.0	0.00	0.00	0.0	
2	200.0	0.00	0.00	200.0	0.0	0.0	0.00	0.00	0.0	
3	1097.4	26.92	289.99	1064.7	70.8	-194.5	3.00	289.99	207.0	
4	6231.3	26.92	289.99	5642.3	865.3	-2378.9	0.00	0.00	2531.4	
5	7128.7	0.00	0.00	6507.0	936.1	-2573.4	3.00	180.00	2738.3	P27 595 EF 11E-27 TGT
6	7257.9	0.32	239.40	6636.2	935.9	-2573.7	0.25	239.40	2738.6	
7	10688.7	0.32	239.40	10067.0	926.1	-2590.4	0.00	0.00	2750.9	P27 595 EF 11E-27 BHL
8	10788.7	0.32	239.40	10167.0	925.8	-2590.9	0.00	0.00	2751.3	



Azimuths to True North  
Magnetic North: 10.46°

Magnetic Field  
Strength: 52346.7snT  
Dip Angle: 65.82°  
Date: 11/5/2010  
Model: IGRF2010

#### FORMATION TOP DETAILS

TVDPath	MDPath	Formation
6467.0	7088.7	Williams Fork (TVD)
6507.0	7128.7	Top of Gas (TVD)
10067.0	10688.7	Rollins TVD

Plan #1  
NP EF11E-27 P27 595  
WELL @ 6671.0ft (Original Well Elev)  
North American Datum 1983  
Well NP EF11E-27 P27 595, True North

Type	Target	Azimuth	Origin Type	N/S	E/W	From TVD
TD	No Target (Freehand)	289.66	Slot	0.0	0.0	0.0
Name		TVD	+N/-S	+E/-W	Latitude	Longitude
P27 595 EF 11E-27 TGT		6507.0	936.1	-2573.4	39.582133	-108.042486
P27 595 EF 11E-27 BHL		10067.0	926.1	-2590.4	39.582105	-108.042546

# Cathedral Energy Services

## Planning Report

<b>Database:</b>	EDM 5000.1 US Multi Users DB	<b>Local Co-ordinate Reference:</b>	Well NP EF11E-27 P27 595
<b>Company:</b>	EnCana Oil & Gas (USA) Inc	<b>TVD Reference:</b>	WELL @ 6671.0ft (Original Well Elev)
<b>Project:</b>	North Piceance	<b>MD Reference:</b>	WELL @ 6671.0ft (Original Well Elev)
<b>Site:</b>	P27 595 (S27-T5S-R95W)	<b>North Reference:</b>	True
<b>Well:</b>	NP EF11E-27 P27 595	<b>Survey Calculation Method:</b>	Minimum Curvature
<b>Wellbore:</b>	DD		
<b>Design:</b>	Plan #1		

<b>Project</b>	North Piceance		
<b>Map System:</b>	US State Plane 1983	<b>System Datum:</b>	Mean Sea Level
<b>Geo Datum:</b>	North American Datum 1983		
<b>Map Zone:</b>	Colorado Central Zone		

Site		P27 595 (S27-T5S-R95W)			
Site Position:		Northing:	1,645,842.89 ft	Latitude:	39.579292
From:	Lat/Long	Easting:	2,286,079.88 ft	Longitude:	-108.033175
Position Uncertainty:	0.0 ft	Slot Radius:	0.000 in	Grid Convergence:	-1.60 °

Well	NP EF11E-27 P27 595					
Well Position	+N/-S	0.0 ft	Northing:	1,645,943.13 ft	Latitude:	39.579563
	+E/-W	0.0 ft	Easting:	2,286,031.73 ft	Longitude:	-108.033356
Position Uncertainty		0.0 ft	Wellhead Elevation:	ft	Ground Level:	6,649.0 ft

<b>Wellbore</b>	DD				
<b>Magnetics</b>	<b>Model Name</b>	<b>Sample Date</b>	<b>Declination (°)</b>	<b>Dip Angle (°)</b>	<b>Field Strength (nT)</b>
	IGRF2010	11/5/2010	10.46	65.82	52,347

<b>Design</b>	Plan #1			
<b>Audit Notes:</b>				
<b>Version:</b>	<b>Phase:</b>	PLAN	<b>Tie On Depth:</b>	0.0
<b>Vertical Section:</b>	<b>Depth From (TVD) (ft)</b>	<b>+N/-S (ft)</b>	<b>+E/-W (ft)</b>	<b>Direction (°)</b>
	0.0	0.0	0.0	289.66

<b>Plan Sections</b>										
Measured Depth (ft)	Inclination (°)	Azimuth (°)	Vertical Depth (ft)	+N/-S (ft)	+E/-W (ft)	Dogleg Rate (°/100ft)	Build Rate (°/100ft)	Turn Rate (°/100ft)	TFO (°)	Target
0.0	0.00	0.00	0.0	0.0	0.0	0.00	0.00	0.00	0.00	
200.0	0.00	0.00	200.0	0.0	0.0	0.00	0.00	0.00	0.00	
1,097.4	26.92	289.99	1,064.7	70.8	-194.5	3.00	3.00	0.00	289.99	
6,231.3	26.92	289.99	5,642.3	865.3	-2,378.9	0.00	0.00	0.00	0.00	
7,128.7	0.00	0.00	6,507.0	936.1	-2,573.4	3.00	-3.00	0.00	180.00	P27 595 EF 11E-27 T
7,257.9	0.32	239.40	6,636.2	935.9	-2,573.7	0.25	0.25	-93.31	239.40	
10,688.7	0.32	239.40	10,067.0	926.1	-2,590.4	0.00	0.00	0.00	0.00	P27 595 EF 11E-27 B
10,788.7	0.32	239.40	10,167.0	925.8	-2,590.9	0.00	0.00	0.00	0.00	

# Cathedral Energy Services

## Planning Report

<b>Database:</b>	EDM 5000.1 US Multi Users DB	<b>Local Co-ordinate Reference:</b>	Well NP EF11E-27 P27 595
<b>Company:</b>	EnCana Oil & Gas (USA) Inc	<b>TVD Reference:</b>	WELL @ 6671.0ft (Original Well Elev)
<b>Project:</b>	North Piceance	<b>MD Reference:</b>	WELL @ 6671.0ft (Original Well Elev)
<b>Site:</b>	P27 595 (S27-T5S-R95W)	<b>North Reference:</b>	True
<b>Well:</b>	NP EF11E-27 P27 595	<b>Survey Calculation Method:</b>	Minimum Curvature
<b>Wellbore:</b>	DD		
<b>Design:</b>	Plan #1		

Planned Survey									
Measured Depth (ft)	Inclination (°)	Azimuth (°)	Vertical Depth (ft)	+N/-S (ft)	+E/-W (ft)	Vertical Section (ft)	Dogleg Rate (°/100ft)	Build Rate (°/100ft)	Comments / Formations
0.0	0.00	0.00	0.0	0.0	0.0	0.0	0.00	0.00	
100.0	0.00	0.00	100.0	0.0	0.0	0.0	0.00	0.00	
200.0	0.00	0.00	200.0	0.0	0.0	0.0	0.00	0.00	KOP @ 200'
300.0	3.00	289.99	300.0	0.9	-2.5	2.6	3.00	3.00	
400.0	6.00	289.99	399.6	3.6	-9.8	10.5	3.00	3.00	
500.0	9.00	289.99	498.8	8.0	-22.1	23.5	3.00	3.00	
600.0	12.00	289.99	597.1	14.3	-39.2	41.7	3.00	3.00	
700.0	15.00	289.99	694.3	22.2	-61.2	65.1	3.00	3.00	
800.0	18.00	289.99	790.2	32.0	-87.8	93.5	3.00	3.00	
900.0	21.00	289.99	884.4	43.4	-119.2	126.8	3.00	3.00	
1,000.0	24.00	289.99	976.8	56.4	-155.2	165.1	3.00	3.00	
1,097.4	26.92	289.99	1,064.7	70.8	-194.5	207.0	3.00	3.00	EOB; Inc=26.9°
1,100.0	26.92	289.99	1,067.1	71.2	-195.6	208.2	0.00	0.00	
1,200.0	26.92	289.99	1,156.2	86.6	-238.2	253.4	0.00	0.00	
1,300.0	26.92	289.99	1,245.4	102.1	-280.7	298.7	0.00	0.00	
1,400.0	26.92	289.99	1,334.5	117.6	-323.3	344.0	0.00	0.00	
1,500.0	26.92	289.99	1,423.7	133.1	-365.8	389.3	0.00	0.00	
1,600.0	26.92	289.99	1,512.9	148.5	-408.4	434.5	0.00	0.00	
1,700.0	26.92	289.99	1,602.0	164.0	-450.9	479.8	0.00	0.00	
1,800.0	26.92	289.99	1,691.2	179.5	-493.5	525.1	0.00	0.00	
1,900.0	26.92	289.99	1,780.4	195.0	-536.0	570.4	0.00	0.00	
2,000.0	26.92	289.99	1,869.5	210.5	-578.6	615.6	0.00	0.00	
2,100.0	26.92	289.99	1,958.7	225.9	-621.1	660.9	0.00	0.00	
2,200.0	26.92	289.99	2,047.9	241.4	-663.7	706.2	0.00	0.00	
2,300.0	26.92	289.99	2,137.0	256.9	-706.2	751.5	0.00	0.00	
2,400.0	26.92	289.99	2,226.2	272.4	-748.7	796.7	0.00	0.00	
2,500.0	26.92	289.99	2,315.3	287.8	-791.3	842.0	0.00	0.00	
2,600.0	26.92	289.99	2,404.5	303.3	-833.8	887.3	0.00	0.00	
2,700.0	26.92	289.99	2,493.7	318.8	-876.4	932.6	0.00	0.00	
2,800.0	26.92	289.99	2,582.8	334.3	-918.9	977.8	0.00	0.00	
2,900.0	26.92	289.99	2,672.0	349.8	-961.5	1,023.1	0.00	0.00	
3,000.0	26.92	289.99	2,761.2	365.2	-1,004.0	1,068.4	0.00	0.00	
3,100.0	26.92	289.99	2,850.3	380.7	-1,046.6	1,113.7	0.00	0.00	
3,200.0	26.92	289.99	2,939.5	396.2	-1,089.1	1,158.9	0.00	0.00	
3,300.0	26.92	289.99	3,028.7	411.7	-1,131.7	1,204.2	0.00	0.00	
3,400.0	26.92	289.99	3,117.8	427.1	-1,174.2	1,249.5	0.00	0.00	
3,500.0	26.92	289.99	3,207.0	442.6	-1,216.8	1,294.8	0.00	0.00	
3,600.0	26.92	289.99	3,296.1	458.1	-1,259.3	1,340.0	0.00	0.00	
3,700.0	26.92	289.99	3,385.3	473.6	-1,301.9	1,385.3	0.00	0.00	
3,800.0	26.92	289.99	3,474.5	489.0	-1,344.4	1,430.6	0.00	0.00	
3,900.0	26.92	289.99	3,563.6	504.5	-1,387.0	1,475.9	0.00	0.00	
4,000.0	26.92	289.99	3,652.8	520.0	-1,429.5	1,521.1	0.00	0.00	
4,100.0	26.92	289.99	3,742.0	535.5	-1,472.1	1,566.4	0.00	0.00	
4,200.0	26.92	289.99	3,831.1	551.0	-1,514.6	1,611.7	0.00	0.00	
4,300.0	26.92	289.99	3,920.3	566.4	-1,557.2	1,657.0	0.00	0.00	
4,400.0	26.92	289.99	4,009.4	581.9	-1,599.7	1,702.2	0.00	0.00	
4,500.0	26.92	289.99	4,098.6	597.4	-1,642.3	1,747.5	0.00	0.00	
4,600.0	26.92	289.99	4,187.8	612.9	-1,684.8	1,792.8	0.00	0.00	
4,700.0	26.92	289.99	4,276.9	628.3	-1,727.4	1,838.1	0.00	0.00	
4,800.0	26.92	289.99	4,366.1	643.8	-1,769.9	1,883.3	0.00	0.00	
4,900.0	26.92	289.99	4,455.3	659.3	-1,812.5	1,928.6	0.00	0.00	
5,000.0	26.92	289.99	4,544.4	674.8	-1,855.0	1,973.9	0.00	0.00	

# Cathedral Energy Services

## Planning Report

<b>Database:</b>	EDM 5000.1 US Multi Users DB	<b>Local Co-ordinate Reference:</b>	Well NP EF11E-27 P27 595
<b>Company:</b>	EnCana Oil & Gas (USA) Inc	<b>TVD Reference:</b>	WELL @ 6671.0ft (Original Well Elev)
<b>Project:</b>	North Piceance	<b>MD Reference:</b>	WELL @ 6671.0ft (Original Well Elev)
<b>Site:</b>	P27 595 (S27-T5S-R95W)	<b>North Reference:</b>	True
<b>Well:</b>	NP EF11E-27 P27 595	<b>Survey Calculation Method:</b>	Minimum Curvature
<b>Wellbore:</b>	DD		
<b>Design:</b>	Plan #1		

Planned Survey									
Measured Depth (ft)	Inclination (°)	Azimuth (°)	Vertical Depth (ft)	+N/-S (ft)	+E/-W (ft)	Vertical Section (ft)	Dogleg Rate (°/100ft)	Build Rate (°/100ft)	Comments / Formations
5,100.0	26.92	289.99	4,633.6	690.3	-1,897.6	2,019.2	0.00	0.00	
5,200.0	26.92	289.99	4,722.8	705.7	-1,940.1	2,064.4	0.00	0.00	
5,300.0	26.92	289.99	4,811.9	721.2	-1,982.7	2,109.7	0.00	0.00	
5,400.0	26.92	289.99	4,901.1	736.7	-2,025.2	2,155.0	0.00	0.00	
5,500.0	26.92	289.99	4,990.2	752.2	-2,067.7	2,200.3	0.00	0.00	
5,600.0	26.92	289.99	5,079.4	767.6	-2,110.3	2,245.5	0.00	0.00	
5,700.0	26.92	289.99	5,168.6	783.1	-2,152.8	2,290.8	0.00	0.00	
5,800.0	26.92	289.99	5,257.7	798.6	-2,195.4	2,336.1	0.00	0.00	
5,900.0	26.92	289.99	5,346.9	814.1	-2,237.9	2,381.4	0.00	0.00	
6,000.0	26.92	289.99	5,436.1	829.6	-2,280.5	2,426.6	0.00	0.00	
6,100.0	26.92	289.99	5,525.2	845.0	-2,323.0	2,471.9	0.00	0.00	
6,200.0	26.92	289.99	5,614.4	860.5	-2,365.6	2,517.2	0.00	0.00	
6,231.3	26.92	289.99	5,642.3	865.3	-2,378.9	2,531.4	0.00	0.00	Start Drop -3.00
6,300.0	24.86	289.99	5,704.1	875.6	-2,407.1	2,561.4	3.00	-3.00	
6,400.0	21.86	289.99	5,795.9	889.2	-2,444.3	2,601.0	3.00	-3.00	
6,500.0	18.86	289.99	5,889.6	901.0	-2,477.0	2,635.8	3.00	-3.00	
6,600.0	15.86	289.99	5,985.1	911.2	-2,505.1	2,665.6	3.00	-3.00	
6,700.0	12.86	289.99	6,081.9	919.7	-2,528.4	2,690.4	3.00	-3.00	
6,800.0	9.86	289.99	6,180.0	926.5	-2,546.9	2,710.1	3.00	-3.00	
6,900.0	6.86	289.99	6,278.9	931.4	-2,560.6	2,724.7	3.00	-3.00	
7,000.0	3.86	289.99	6,378.4	934.6	-2,569.3	2,734.0	3.00	-3.00	
7,088.7	1.20	289.99	6,467.0	936.0	-2,573.0	2,737.9	3.00	-3.00	Williams Fork (TVD)
7,100.0	0.86	289.99	6,478.3	936.0	-2,573.2	2,738.1	3.00	-3.00	
7,128.7	0.00	0.00	6,507.0	936.1	-2,573.4	2,738.3	3.00	-3.00	EOD; Inc=0° - Top of Gas (TVD) - P27 595 EF
7,200.0	0.18	239.40	6,578.3	936.0	-2,573.5	2,738.4	0.25	0.25	
7,257.9	0.32	239.40	6,636.2	935.9	-2,573.7	2,738.6	0.25	0.25	
7,300.0	0.32	239.40	6,678.3	935.8	-2,573.9	2,738.7	0.00	0.00	
7,400.0	0.32	239.40	6,778.3	935.5	-2,574.4	2,739.1	0.00	0.00	
7,500.0	0.32	239.40	6,878.3	935.2	-2,574.9	2,739.4	0.00	0.00	
7,600.0	0.32	239.40	6,978.3	934.9	-2,575.4	2,739.8	0.00	0.00	
7,700.0	0.32	239.40	7,078.3	934.6	-2,575.9	2,740.2	0.00	0.00	
7,800.0	0.32	239.40	7,178.3	934.4	-2,576.3	2,740.5	0.00	0.00	
7,900.0	0.32	239.40	7,278.3	934.1	-2,576.8	2,740.9	0.00	0.00	
8,000.0	0.32	239.40	7,378.3	933.8	-2,577.3	2,741.2	0.00	0.00	
8,100.0	0.32	239.40	7,478.3	933.5	-2,577.8	2,741.6	0.00	0.00	
8,200.0	0.32	239.40	7,578.3	933.2	-2,578.3	2,742.0	0.00	0.00	
8,300.0	0.32	239.40	7,678.3	932.9	-2,578.8	2,742.3	0.00	0.00	
8,400.0	0.32	239.40	7,778.3	932.6	-2,579.3	2,742.7	0.00	0.00	
8,500.0	0.32	239.40	7,878.3	932.3	-2,579.7	2,743.0	0.00	0.00	
8,600.0	0.32	239.40	7,978.3	932.1	-2,580.2	2,743.4	0.00	0.00	
8,700.0	0.32	239.40	8,078.3	931.8	-2,580.7	2,743.8	0.00	0.00	
8,800.0	0.32	239.40	8,178.3	931.5	-2,581.2	2,744.1	0.00	0.00	
8,900.0	0.32	239.40	8,278.3	931.2	-2,581.7	2,744.5	0.00	0.00	
9,000.0	0.32	239.40	8,378.3	930.9	-2,582.2	2,744.8	0.00	0.00	
9,100.0	0.32	239.40	8,478.3	930.6	-2,582.7	2,745.2	0.00	0.00	
9,200.0	0.32	239.40	8,578.3	930.3	-2,583.1	2,745.6	0.00	0.00	
9,300.0	0.32	239.40	8,678.3	930.1	-2,583.6	2,745.9	0.00	0.00	
9,400.0	0.32	239.40	8,778.3	929.8	-2,584.1	2,746.3	0.00	0.00	
9,500.0	0.32	239.40	8,878.3	929.5	-2,584.6	2,746.6	0.00	0.00	
9,600.0	0.32	239.40	8,978.3	929.2	-2,585.1	2,747.0	0.00	0.00	
9,700.0	0.32	239.40	9,078.3	928.9	-2,585.6	2,747.4	0.00	0.00	
9,800.0	0.32	239.40	9,178.3	928.6	-2,586.1	2,747.7	0.00	0.00	

# Cathedral Energy Services

## Planning Report

<b>Database:</b>	EDM 5000.1 US Multi Users DB	<b>Local Co-ordinate Reference:</b>	Well NP EF11E-27 P27 595
<b>Company:</b>	EnCana Oil & Gas (USA) Inc	<b>TVD Reference:</b>	WELL @ 6671.0ft (Original Well Elev)
<b>Project:</b>	North Piceance	<b>MD Reference:</b>	WELL @ 6671.0ft (Original Well Elev)
<b>Site:</b>	P27 595 (S27-T5S-R95W)	<b>North Reference:</b>	True
<b>Well:</b>	NP EF11E-27 P27 595	<b>Survey Calculation Method:</b>	Minimum Curvature
<b>Wellbore:</b>	DD		
<b>Design:</b>	Plan #1		

Planned Survey									
Measured Depth (ft)	Inclination (°)	Azimuth (°)	Vertical Depth (ft)	+N/-S (ft)	+E/-W (ft)	Vertical Section (ft)	Dogleg Rate (°/100ft)	Build Rate (°/100ft)	Comments / Formations
9,900.0	0.32	239.40	9,278.3	928.3	-2,586.5	2,748.1	0.00	0.00	
10,000.0	0.32	239.40	9,378.3	928.0	-2,587.0	2,748.4	0.00	0.00	
10,100.0	0.32	239.40	9,478.3	927.8	-2,587.5	2,748.8	0.00	0.00	
10,200.0	0.32	239.40	9,578.3	927.5	-2,588.0	2,749.2	0.00	0.00	
10,300.0	0.32	239.40	9,678.3	927.2	-2,588.5	2,749.5	0.00	0.00	
10,400.0	0.32	239.40	9,778.3	926.9	-2,589.0	2,749.9	0.00	0.00	
10,500.0	0.32	239.40	9,878.3	926.6	-2,589.5	2,750.2	0.00	0.00	
10,600.0	0.32	239.40	9,978.3	926.3	-2,589.9	2,750.6	0.00	0.00	
10,688.7	0.32	239.40	10,067.0	926.1	-2,590.4	2,750.9	0.00	0.00	Rollins TVD - P27 595 EF 11E-27 BHL
10,700.0	0.32	239.40	10,078.3	926.0	-2,590.4	2,751.0	0.00	0.00	
10,788.7	0.32	239.40	10,167.0	925.8	-2,590.9	2,751.3	0.00	0.00	Drillers TD @ 10,167' TVD

Targets									
Target Name	Dip Angle (°)	Dip Dir. (°)	TVD (ft)	+N/-S (ft)	+E/-W (ft)	Northing (ft)	Easting (ft)	Latitude	Longitude
- hit/miss target									
- Shape									
P27 595 EF 11E-27 TG1	0.00	0.00	6,507.0	936.1	-2,573.4	1,646,950.62	2,283,485.43	39.582133	-108.042486
- plan hits target center									
- Point									
P27 595 EF 11E-27 BHL	0.00	0.00	10,067.0	926.1	-2,590.4	1,646,941.07	2,283,468.19	39.582105	-108.042546
- plan hits target center									
- Rectangle (sides W30.0 H50.0 D0.0)									

Formations						
Measured Depth (ft)	Vertical Depth (ft)	Name	Lithology	Dip (°)	Dip Direction (°)	
7,088.7	6,467.0	Williams Fork (TVD)				
7,128.7	6,507.0	Top of Gas (TVD)				
10,688.7	10,067.0	Rollins TVD				

Plan Annotations					
Measured Depth (ft)	Vertical Depth (ft)	Local Coordinates			
		+N/-S (ft)	+E/-W (ft)	Comment	
200.0	200.0	0.0	0.0	KOP @ 200'	
1,097.4	1,064.7	70.8	-194.5	EOB; Inc=26.9°	
6,231.3	5,642.3	865.3	-2,378.9	Start Drop -3.00	
7,128.7	6,507.0	936.1	-2,573.4	EOD; Inc=0°	
10,788.7	10,167.0	935.9	-2,573.7	Drillers TD @ 10,167' TVD	