

LEGEND:

● PROPOSED LOCATION

Encana OIL & GAS (USA) INC.

WELL PAD P27 595

SECTION 27, T5S, R95W, 6th P.M.

SE 1/4 SE 1/4

SHEET 8 OF 10



Uintah Engineering & Land Surveying
85 South 200 East Vernal, Utah 84078
(435) 789-1017 * FAX (435) 789-1813

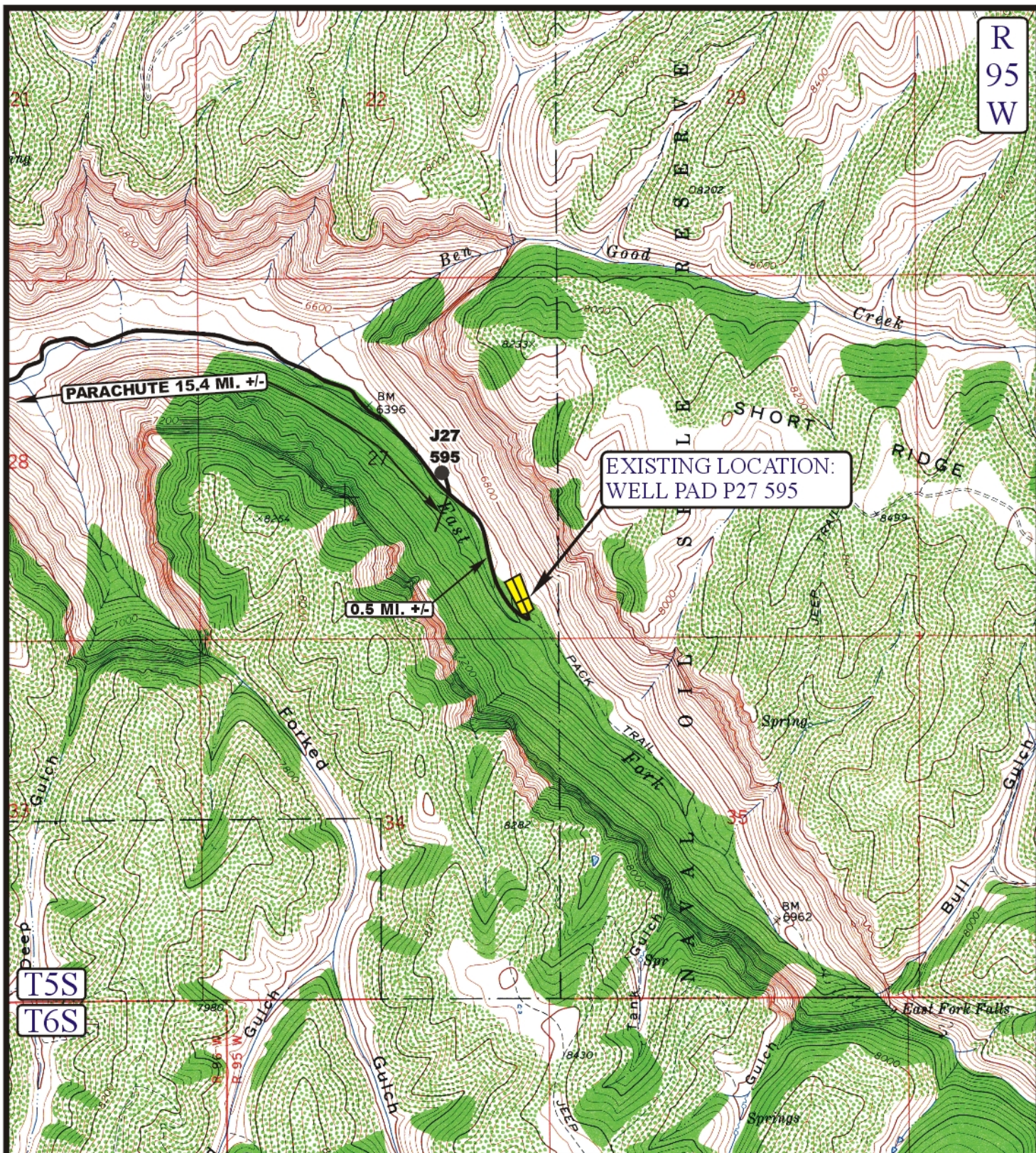


**TOPOGRAPHIC
MAP**

08 04 05
 MONTH DAY YEAR

SCALE: 1:100,000 DRAWN BY: J.L.G. REVISED: 08-16-10





R
95
W

EXISTING LOCATION:
WELL PAD P27 595

0.5 MI. +/-

PARACHUTE 15.4 MI. +/-

T5S

T6S

LEGEND:

----- PROPOSED ACCESS ROAD
————— EXISTING ROAD

Encana OIL & GAS (USA) INC.

WELL PAD P27 595

SECTION 27, T5S, R95W, 6th P.M.

SE 1/4 SE 1/4

SHEET 9 OF 10



Uintah Engineering & Land Surveying
85 South 200 East Vernal, Utah 84078
(435) 789-1017 * FAX (435) 789-1813

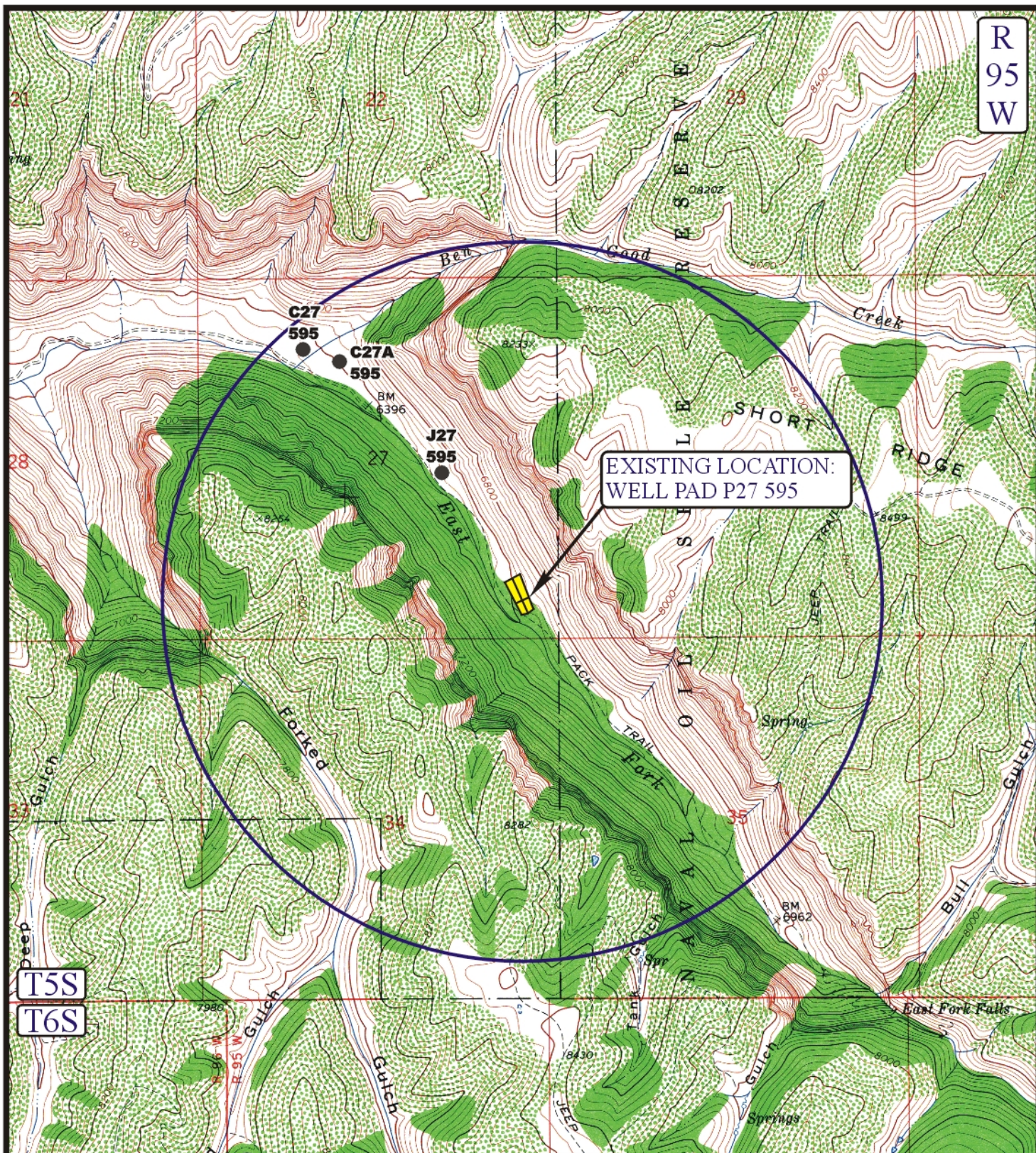


TOPOGRAPHIC
MAP

08 05 05
MONTH DAY YEAR

SCALE: 1" = 2000' DRAWN BY: J.L.G. REVISED: 08-16-10

B
TOPO



LEGEND:

- | | |
|-------------------|-------------------------|
| ⊗ DISPOSAL WELLS | ⊗ WATER WELLS |
| ● PRODUCING WELLS | ⊗ ABANDONED WELLS |
| ⊗ SHUT IN WELLS | ⊗ TEMPORARILY ABANDONED |



Uintah Engineering & Land Surveying
 85 South 200 East Vernal, Utah 84078
 (435) 789-1017 * FAX (435) 789-1813



Encana OIL & GAS (USA) INC.

WELL PAD P27 595

SECTION 27, T5S, R95W, 6th P.M.

SE 1/4 SE 1/4

SHEET 10 OF 10

TOPOGRAPHIC
MAP

08 05 05
 MONTH DAY YEAR

SCALE: 1" = 2000' DRAWN BY: J.L.G. REVISED: 08-16-10



Encana OIL & GAS (USA) INC.
WELL PAD P27 595
SECTION 27, T5S, R95W, 6th P.M.

PROCEED IN A NORTHWESTERLY, THEN NORTHERLY DIRECTION FROM PARACHUTE COLORADO APPROXIMATELY 11.1 MILES TO THE JUNCTION OF THIS ROAD AND AN EXISTING ROAD TO THE NORTHEAST; TURN RIGHT AND PROCEED IN A NORTHEASTERLY, THEN SOUTHEASTERLY DIRECTION APPROXIMATELY 4.3 MILES TO THE JUNCTION OF THIS ROAD AND AN EXISTING ROAD TO THE SOUTHEAST; TURN RIGHT AND PROCEED IN A SOUTHEASTERLY, THEN NORTHWESTERLY DIRECTION APPROXIMATELY 0.5 MILES TO THE EXISTING LOCATION.

TOTAL DISTANCE FROM PARACHUTE COLORADO TO THE PROPOSED LOCATION IS APPROXIMATELY 15.9 MILES.