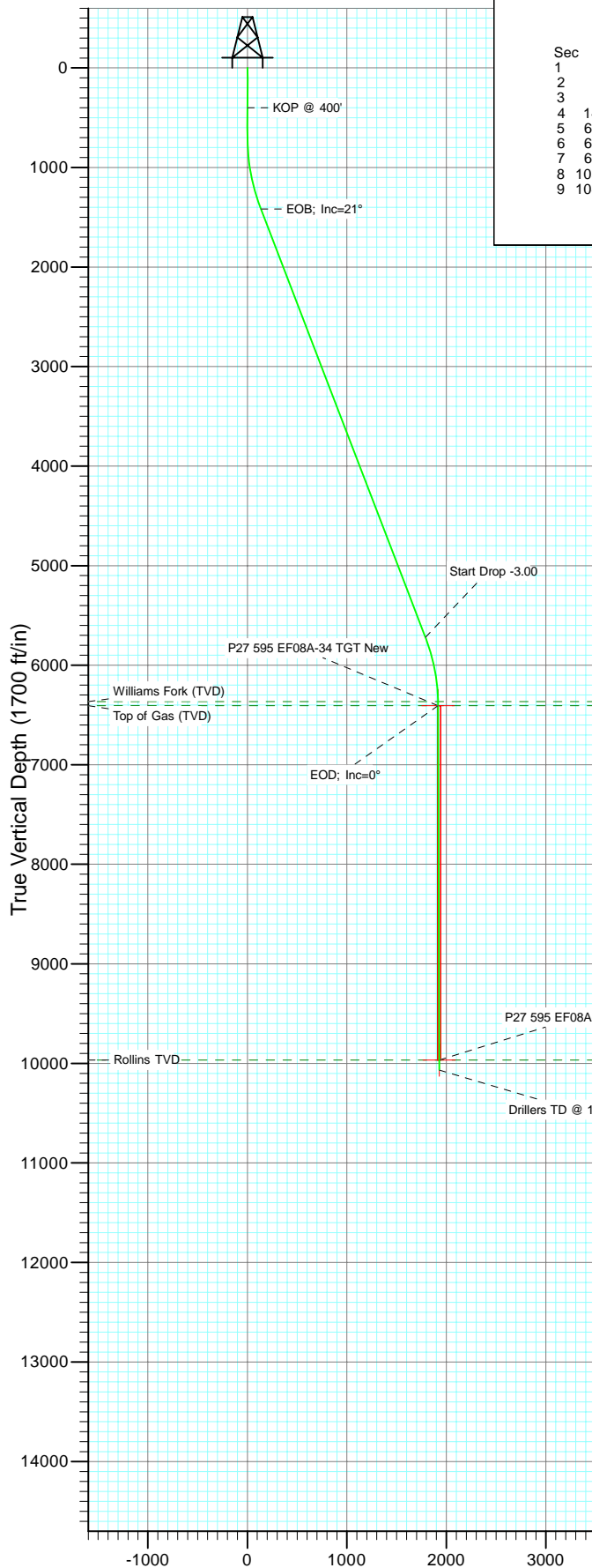
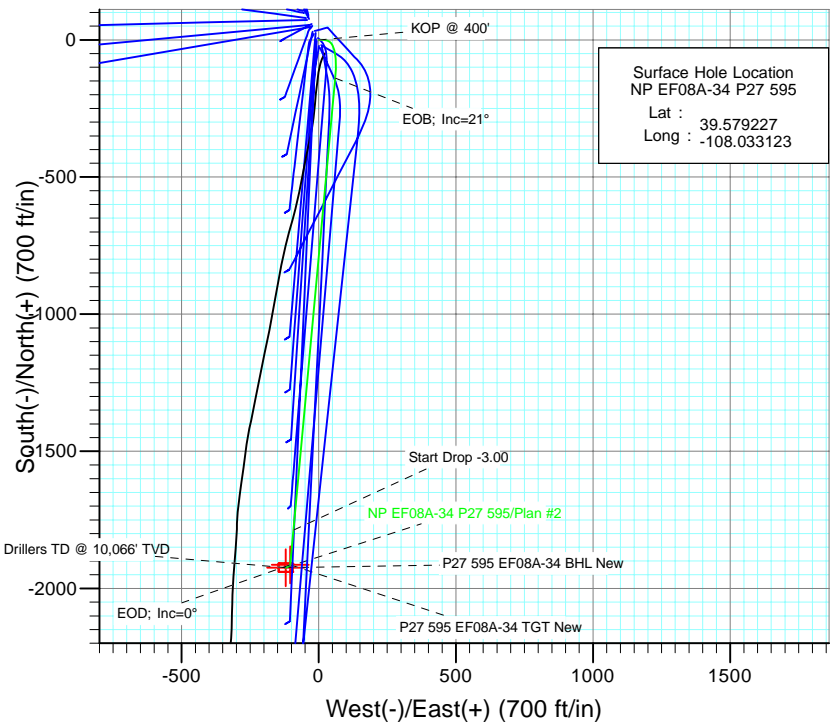




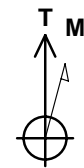
Project: North Piceance  
 Site: P27 595 (S27-T5S-R95W)  
 Well: NP EF08A-34 P27 595  
 Wellbore: DD  
 Design: Plan #2



SECTION DETAILS										
Sec	MD	Inc	Azi	TVD	+N/-S	+E/-W	Dleg	TFace	Vsect	Target
1	0.0	0.00	0.00	0.0	0.0	0.0	0.00	0.00	0.0	
2	400.0	0.00	0.00	400.0	0.0	0.0	0.00	0.00	0.0	
3	666.7	8.00	90.00	665.8	0.0	18.6	3.00	90.00	-1.1	
4	1437.4	21.04	185.28	1417.3	-139.6	60.1	3.00	114.46	136.0	
5	6047.8	21.04	185.28	5720.4	-1787.6	-92.2	0.00	0.00	1789.9	P27 595 EF08A-34 TGT New
6	6749.0	0.00	0.00	6406.0	-1914.3	-103.9	3.00	180.00	1917.1	
7	6824.7	0.32	239.63	6481.8	-1914.4	-104.1	0.42	239.63	1917.2	
8	10309.0	0.32	239.63	9966.0	-1924.3	-120.9	0.00	0.00	1928.0	P27 595 EF08A-34 BHL New
9	10409.0	0.32	239.63	10066.0	-1924.6	-121.4	0.00	0.00	1928.4	



Surface Hole Location  
 NP EF08A-34 P27 595  
 Lat : 39.579227  
 Long : -108.033123



Azimuths to True North  
 Magnetic North: 10.65°

Magnetic Field  
 Strength: 52539.3nT  
 Dip Angle: 65.87°  
 Date: 3/9/2009  
 Model: IGRF200510

#### FORMATION TOP DETAILS

TVDPath	MDPath	Formation
6366.0	6709.0	Williams Fork (TVD)
6406.0	6749.0	Top of Gas (TVD)
9966.0	10309.0	Rollins TVD

Plan #2 NP EF08A-34 P27 595 95xxx; LR EF08A-34 P27 @ 6671.0ft (Original Well Elev) North American Datum 1983 Well NP EF08A-34 P27 595, True North						
Type	Target	Azimuth	Origin Type	N/S	E/W	From TVD
Target	P27 595 EF08A-34 BHL	183.28	Slot	0.0	0.0	0.0
Name	Target	TVD	+N/-S	+E/-W	Latitude	Longitude
P27 595 EF08A-34 TGT New		6406.0	-1914.3	-103.9	39.573972	-108.033491
P27 595 EF08A-34 BHL New		9966.0	-1924.3	-120.9	39.573944	-108.033552

# Cathedral Energy Services

## Planning Report

<b>Database:</b>	EDM 5000.1 US Multi Users DB	<b>Local Co-ordinate Reference:</b>	Well NP EF08A-34 P27 595
<b>Company:</b>	EnCana Oil & Gas (USA) Inc	<b>TVD Reference:</b>	EF08A-34 P27 @ 6671.0ft (Original Well Elev)
<b>Project:</b>	North Piceance	<b>MD Reference:</b>	EF08A-34 P27 @ 6671.0ft (Original Well Elev)
<b>Site:</b>	P27 595 (S27-T5S-R95W)	<b>North Reference:</b>	True
<b>Well:</b>	NP EF08A-34 P27 595	<b>Survey Calculation Method:</b>	Minimum Curvature
<b>Wellbore:</b>	DD		
<b>Design:</b>	Plan #2		

<b>Project</b>	North Piceance		
<b>Map System:</b>	US State Plane 1983	<b>System Datum:</b>	Mean Sea Level
<b>Geo Datum:</b>	North American Datum 1983		
<b>Map Zone:</b>	Colorado Central Zone		

Site		P27 595 (S27-T5S-R95W)			
Site Position:		Northing:	1,645,842.89 ft	Latitude:	39.579292
From:	Lat/Long	Easting:	2,286,079.88 ft	Longitude:	-108.033175
Position Uncertainty:	0.0 ft	Slot Radius:	0.000 in	Grid Convergence:	-1.60 °

Well	NP EF08A-34 P27 595					
Well Position	+N/-S	0.0 ft	Northing:	1,645,818.96 ft	Latitude:	39.579227
	+E/-W	0.0 ft	Easting:	2,286,093.96 ft	Longitude:	-108.033123
Position Uncertainty		0.0 ft	Wellhead Elevation:	ft	Ground Level:	6,649.0 ft

<b>Wellbore</b>	DD				
<b>Magnetics</b>	<b>Model Name</b>	<b>Sample Date</b>	<b>Declination (°)</b>	<b>Dip Angle (°)</b>	<b>Field Strength (nT)</b>
	IGRF200510	3/9/2009	10.65	65.87	52,539

<b>Design</b>	Plan #2			
<b>Audit Notes:</b>				
<b>Version:</b>	<b>Phase:</b>	PLAN	<b>Tie On Depth:</b>	0.0
<b>Vertical Section:</b>	<b>Depth From (TVD) (ft)</b>	<b>+N/-S (ft)</b>	<b>+E/-W (ft)</b>	<b>Direction (°)</b>
	0.0	0.0	0.0	183.28

<b>Plan Sections</b>										
Measured Depth (ft)	Inclination (°)	Azimuth (°)	Vertical Depth (ft)	+N/-S (ft)	+E/-W (ft)	Dogleg Rate (°/100ft)	Build Rate (°/100ft)	Turn Rate (°/100ft)	TFO (°)	Target
0.0	0.00	0.00	0.0	0.0	0.0	0.00	0.00	0.00	0.00	
400.0	0.00	0.00	400.0	0.0	0.0	0.00	0.00	0.00	0.00	
666.7	8.00	90.00	665.8	0.0	18.6	3.00	3.00	0.00	90.00	
1,437.4	21.04	185.28	1,417.3	-139.6	60.1	3.00	1.69	12.36	114.46	
6,047.8	21.04	185.28	5,720.4	-1,787.6	-92.2	0.00	0.00	0.00	0.00	
6,749.0	0.00	0.00	6,406.0	-1,914.3	-103.9	3.00	-3.00	0.00	180.00	P27 595 EF08A-34 T
6,824.7	0.32	239.63	6,481.8	-1,914.4	-104.1	0.42	0.42	-158.87	239.63	
10,309.0	0.32	239.63	9,966.0	-1,924.3	-120.9	0.00	0.00	0.00	0.00	P27 595 EF08A-34 BI
10,409.0	0.32	239.63	10,066.0	-1,924.6	-121.4	0.00	0.00	0.00	0.00	

# Cathedral Energy Services

## Planning Report

<b>Database:</b>	EDM 5000.1 US Multi Users DB	<b>Local Co-ordinate Reference:</b>	Well NP EF08A-34 P27 595
<b>Company:</b>	EnCana Oil & Gas (USA) Inc	<b>TVD Reference:</b>	EF08A-34 P27 @ 6671.0ft (Original Well Elev)
<b>Project:</b>	North Piceance	<b>MD Reference:</b>	EF08A-34 P27 @ 6671.0ft (Original Well Elev)
<b>Site:</b>	P27 595 (S27-T5S-R95W)	<b>North Reference:</b>	True
<b>Well:</b>	NP EF08A-34 P27 595	<b>Survey Calculation Method:</b>	Minimum Curvature
<b>Wellbore:</b>	DD		
<b>Design:</b>	Plan #2		

### Planned Survey

Measured Depth (ft)	Inclination (°)	Azimuth (°)	Vertical Depth (ft)	+N/-S (ft)	+E/-W (ft)	Vertical Section (ft)	Dogleg Rate (°/100ft)	Build Rate (°/100ft)	Comments / Formations
0.0	0.00	0.00	0.0	0.0	0.0	0.0	0.00	0.00	
100.0	0.00	0.00	100.0	0.0	0.0	0.0	0.00	0.00	
200.0	0.00	0.00	200.0	0.0	0.0	0.0	0.00	0.00	
300.0	0.00	0.00	300.0	0.0	0.0	0.0	0.00	0.00	
400.0	0.00	0.00	400.0	0.0	0.0	0.0	0.00	0.00	KOP @ 400'
500.0	3.00	90.00	500.0	0.0	2.6	-0.1	3.00	3.00	
600.0	6.00	90.00	599.6	0.0	10.5	-0.6	3.00	3.00	
666.7	8.00	90.00	665.8	0.0	18.6	-1.1	3.00	3.00	
700.0	7.64	96.86	698.8	-0.3	23.1	-1.1	3.00	-1.08	
800.0	7.31	119.94	798.0	-4.2	35.2	2.2	3.00	-0.33	
900.0	8.15	141.52	897.1	-13.0	45.1	10.4	3.00	0.84	
1,000.0	9.86	157.38	995.9	-26.4	52.8	23.3	3.00	1.71	
1,100.0	12.08	168.04	1,094.1	-44.6	58.3	41.1	3.00	2.22	
1,200.0	14.58	175.27	1,191.4	-67.3	61.5	63.7	3.00	2.50	
1,300.0	17.24	180.37	1,287.5	-94.7	62.5	91.0	3.00	2.66	
1,400.0	19.99	184.12	1,382.3	-126.6	61.1	122.9	3.00	2.75	
1,437.4	21.04	185.28	1,417.3	-139.6	60.1	136.0	3.00	2.80	EOB; Inc=21°
1,500.0	21.04	185.28	1,475.8	-162.0	58.0	158.4	0.00	0.00	
1,600.0	21.04	185.28	1,569.1	-197.8	54.7	194.3	0.00	0.00	
1,700.0	21.04	185.28	1,662.4	-233.5	51.4	230.2	0.00	0.00	
1,800.0	21.04	185.28	1,755.8	-269.3	48.1	266.1	0.00	0.00	
1,900.0	21.04	185.28	1,849.1	-305.0	44.8	301.9	0.00	0.00	
2,000.0	21.04	185.28	1,942.4	-340.7	41.5	337.8	0.00	0.00	
2,100.0	21.04	185.28	2,035.8	-376.5	38.2	373.7	0.00	0.00	
2,200.0	21.04	185.28	2,129.1	-412.2	34.9	409.6	0.00	0.00	
2,300.0	21.04	185.28	2,222.4	-448.0	31.6	445.4	0.00	0.00	
2,400.0	21.04	185.28	2,315.8	-483.7	28.3	481.3	0.00	0.00	
2,500.0	21.04	185.28	2,409.1	-519.5	25.0	517.2	0.00	0.00	
2,600.0	21.04	185.28	2,502.4	-555.2	21.7	553.1	0.00	0.00	
2,700.0	21.04	185.28	2,595.8	-590.9	18.4	588.9	0.00	0.00	
2,800.0	21.04	185.28	2,689.1	-626.7	15.1	624.8	0.00	0.00	
2,900.0	21.04	185.28	2,782.5	-662.4	11.8	660.7	0.00	0.00	
3,000.0	21.04	185.28	2,875.8	-698.2	8.5	696.5	0.00	0.00	
3,100.0	21.04	185.28	2,969.1	-733.9	5.2	732.4	0.00	0.00	
3,200.0	21.04	185.28	3,062.5	-769.7	1.9	768.3	0.00	0.00	
3,300.0	21.04	185.28	3,155.8	-805.4	-1.5	804.2	0.00	0.00	
3,400.0	21.04	185.28	3,249.1	-841.1	-4.8	840.0	0.00	0.00	
3,500.0	21.04	185.28	3,342.5	-876.9	-8.1	875.9	0.00	0.00	
3,600.0	21.04	185.28	3,435.8	-912.6	-11.4	911.8	0.00	0.00	
3,700.0	21.04	185.28	3,529.1	-948.4	-14.7	947.7	0.00	0.00	
3,800.0	21.04	185.28	3,622.5	-984.1	-18.0	983.5	0.00	0.00	
3,900.0	21.04	185.28	3,715.8	-1,019.9	-21.3	1,019.4	0.00	0.00	
4,000.0	21.04	185.28	3,809.1	-1,055.6	-24.6	1,055.3	0.00	0.00	
4,100.0	21.04	185.28	3,902.5	-1,091.4	-27.9	1,091.2	0.00	0.00	
4,200.0	21.04	185.28	3,995.8	-1,127.1	-31.2	1,127.0	0.00	0.00	
4,300.0	21.04	185.28	4,089.1	-1,162.8	-34.5	1,162.9	0.00	0.00	
4,400.0	21.04	185.28	4,182.5	-1,198.6	-37.8	1,198.8	0.00	0.00	
4,500.0	21.04	185.28	4,275.8	-1,234.3	-41.1	1,234.7	0.00	0.00	
4,600.0	21.04	185.28	4,369.2	-1,270.1	-44.4	1,270.5	0.00	0.00	
4,700.0	21.04	185.28	4,462.5	-1,305.8	-47.7	1,306.4	0.00	0.00	
4,800.0	21.04	185.28	4,555.8	-1,341.6	-51.0	1,342.3	0.00	0.00	
4,900.0	21.04	185.28	4,649.2	-1,377.3	-54.3	1,378.2	0.00	0.00	

# Cathedral Energy Services

## Planning Report

<b>Database:</b>	EDM 5000.1 US Multi Users DB	<b>Local Co-ordinate Reference:</b>	Well NP EF08A-34 P27 595
<b>Company:</b>	EnCana Oil & Gas (USA) Inc	<b>TVD Reference:</b>	EF08A-34 P27 @ 6671.0ft (Original Well Elev)
<b>Project:</b>	North Piceance	<b>MD Reference:</b>	EF08A-34 P27 @ 6671.0ft (Original Well Elev)
<b>Site:</b>	P27 595 (S27-T5S-R95W)	<b>North Reference:</b>	True
<b>Well:</b>	NP EF08A-34 P27 595	<b>Survey Calculation Method:</b>	Minimum Curvature
<b>Wellbore:</b>	DD		
<b>Design:</b>	Plan #2		

### Planned Survey

Measured Depth (ft)	Inclination (°)	Azimuth (°)	Vertical Depth (ft)	+N/-S (ft)	+E/-W (ft)	Vertical Section (ft)	Dogleg Rate (°/100ft)	Build Rate (°/100ft)	Comments / Formations
5,000.0	21.04	185.28	4,742.5	-1,413.0	-57.6	1,414.0	0.00	0.00	
5,100.0	21.04	185.28	4,835.8	-1,448.8	-60.9	1,449.9	0.00	0.00	
5,200.0	21.04	185.28	4,929.2	-1,484.5	-64.2	1,485.8	0.00	0.00	
5,300.0	21.04	185.28	5,022.5	-1,520.3	-67.5	1,521.6	0.00	0.00	
5,400.0	21.04	185.28	5,115.8	-1,556.0	-70.8	1,557.5	0.00	0.00	
5,500.0	21.04	185.28	5,209.2	-1,591.8	-74.1	1,593.4	0.00	0.00	
5,600.0	21.04	185.28	5,302.5	-1,627.5	-77.4	1,629.3	0.00	0.00	
5,700.0	21.04	185.28	5,395.8	-1,663.2	-80.7	1,665.1	0.00	0.00	
5,800.0	21.04	185.28	5,489.2	-1,699.0	-84.0	1,701.0	0.00	0.00	
5,900.0	21.04	185.28	5,582.5	-1,734.7	-87.3	1,736.9	0.00	0.00	
6,000.0	21.04	185.28	5,675.8	-1,770.5	-90.6	1,772.8	0.00	0.00	
6,047.8	21.04	185.28	5,720.5	-1,787.6	-92.2	1,789.9	0.00	0.00	Start Drop -3.00
6,100.0	19.47	185.28	5,769.4	-1,805.6	-93.9	1,808.0	3.00	-3.00	
6,200.0	16.47	185.28	5,864.5	-1,836.3	-96.7	1,838.8	3.00	-3.00	
6,300.0	13.47	185.28	5,961.1	-1,862.0	-99.1	1,864.6	3.00	-3.00	
6,400.0	10.47	185.28	6,059.0	-1,882.6	-101.0	1,885.3	3.00	-3.00	
6,500.0	7.47	185.28	6,157.7	-1,898.2	-102.4	1,900.9	3.00	-3.00	
6,600.0	4.47	185.28	6,257.2	-1,908.5	-103.4	1,911.3	3.00	-3.00	
6,700.0	1.47	185.28	6,357.0	-1,913.7	-103.8	1,916.5	3.00	-3.00	
6,709.0	1.20	185.28	6,366.0	-1,913.9	-103.9	1,916.7	3.00	-3.00	Williams Fork (TVD)
6,749.0	0.00	0.00	6,406.0	-1,914.3	-103.9	1,917.1	3.00	-3.00	EOD; Inc=0° - Top of Gas (TVD) - P27 595 EF0
6,759.1	0.04	239.63	6,416.1	-1,914.3	-103.9	1,917.1	0.42	0.42	P27 595 EF08A-34 TGT
6,800.0	0.22	239.63	6,457.0	-1,914.3	-104.0	1,917.2	0.42	0.42	
6,824.7	0.32	239.63	6,481.8	-1,914.4	-104.1	1,917.2	0.42	0.42	
6,900.0	0.32	239.63	6,557.0	-1,914.6	-104.4	1,917.5	0.00	0.00	
7,000.0	0.32	239.63	6,657.0	-1,914.9	-104.9	1,917.8	0.00	0.00	
7,100.0	0.32	239.63	6,757.0	-1,915.2	-105.4	1,918.1	0.00	0.00	
7,200.0	0.32	239.63	6,857.0	-1,915.5	-105.9	1,918.4	0.00	0.00	
7,300.0	0.32	239.63	6,957.0	-1,915.8	-106.4	1,918.7	0.00	0.00	
7,400.0	0.32	239.63	7,057.0	-1,916.0	-106.9	1,919.0	0.00	0.00	
7,500.0	0.32	239.63	7,157.0	-1,916.3	-107.3	1,919.3	0.00	0.00	
7,600.0	0.32	239.63	7,257.0	-1,916.6	-107.8	1,919.6	0.00	0.00	
7,700.0	0.32	239.63	7,357.0	-1,916.9	-108.3	1,919.9	0.00	0.00	
7,800.0	0.32	239.63	7,457.0	-1,917.2	-108.8	1,920.3	0.00	0.00	
7,900.0	0.32	239.63	7,557.0	-1,917.5	-109.3	1,920.6	0.00	0.00	
8,000.0	0.32	239.63	7,657.0	-1,917.7	-109.8	1,920.9	0.00	0.00	
8,100.0	0.32	239.63	7,757.0	-1,918.0	-110.2	1,921.2	0.00	0.00	
8,200.0	0.32	239.63	7,857.0	-1,918.3	-110.7	1,921.5	0.00	0.00	
8,300.0	0.32	239.63	7,957.0	-1,918.6	-111.2	1,921.8	0.00	0.00	
8,400.0	0.32	239.63	8,057.0	-1,918.9	-111.7	1,922.1	0.00	0.00	
8,500.0	0.32	239.63	8,157.0	-1,919.2	-112.2	1,922.4	0.00	0.00	
8,600.0	0.32	239.63	8,257.0	-1,919.4	-112.7	1,922.7	0.00	0.00	
8,700.0	0.32	239.63	8,357.0	-1,919.7	-113.2	1,923.0	0.00	0.00	
8,800.0	0.32	239.63	8,457.0	-1,920.0	-113.6	1,923.4	0.00	0.00	
8,900.0	0.32	239.63	8,557.0	-1,920.3	-114.1	1,923.7	0.00	0.00	
9,000.0	0.32	239.63	8,657.0	-1,920.6	-114.6	1,924.0	0.00	0.00	
9,100.0	0.32	239.63	8,757.0	-1,920.9	-115.1	1,924.3	0.00	0.00	
9,200.0	0.32	239.63	8,857.0	-1,921.1	-115.6	1,924.6	0.00	0.00	
9,300.0	0.32	239.63	8,957.0	-1,921.4	-116.1	1,924.9	0.00	0.00	
9,400.0	0.32	239.63	9,057.0	-1,921.7	-116.5	1,925.2	0.00	0.00	
9,500.0	0.32	239.63	9,157.0	-1,922.0	-117.0	1,925.5	0.00	0.00	
9,600.0	0.32	239.63	9,257.0	-1,922.3	-117.5	1,925.8	0.00	0.00	

# Cathedral Energy Services

## Planning Report

<b>Database:</b>	EDM 5000.1 US Multi Users DB	<b>Local Co-ordinate Reference:</b>	Well NP EF08A-34 P27 595
<b>Company:</b>	EnCana Oil & Gas (USA) Inc	<b>TVD Reference:</b>	EF08A-34 P27 @ 6671.0ft (Original Well Elev)
<b>Project:</b>	North Piceance	<b>MD Reference:</b>	EF08A-34 P27 @ 6671.0ft (Original Well Elev)
<b>Site:</b>	P27 595 (S27-T5S-R95W)	<b>North Reference:</b>	True
<b>Well:</b>	NP EF08A-34 P27 595	<b>Survey Calculation Method:</b>	Minimum Curvature
<b>Wellbore:</b>	DD		
<b>Design:</b>	Plan #2		

### Planned Survey

Measured Depth (ft)	Inclination (°)	Azimuth (°)	Vertical Depth (ft)	+N/-S (ft)	+E/-W (ft)	Vertical Section (ft)	Dogleg Rate (°/100ft)	Build Rate (°/100ft)	Comments / Formations
9,700.0	0.32	239.63	9,357.0	-1,922.6	-118.0	1,926.2	0.00	0.00	
9,800.0	0.32	239.63	9,457.0	-1,922.8	-118.5	1,926.5	0.00	0.00	
9,900.0	0.32	239.63	9,557.0	-1,923.1	-119.0	1,926.8	0.00	0.00	
10,000.0	0.32	239.63	9,657.0	-1,923.4	-119.4	1,927.1	0.00	0.00	
10,100.0	0.32	239.63	9,757.0	-1,923.7	-119.9	1,927.4	0.00	0.00	
10,200.0	0.32	239.63	9,857.0	-1,924.0	-120.4	1,927.7	0.00	0.00	
10,300.0	0.32	239.63	9,957.0	-1,924.3	-120.9	1,928.0	0.00	0.00	
10,309.0	0.32	239.63	9,966.0	-1,924.3	-120.9	1,928.0	0.00	0.00	Rollins TVD - P27 595 EF08A-34 BHL New
10,319.3	0.32	239.63	9,976.2	-1,924.3	-121.0	1,928.1	0.00	0.00	P27 595 EF08A-34 BHL
10,400.0	0.32	239.63	10,057.0	-1,924.5	-121.4	1,928.3	0.00	0.00	
10,409.0	0.32	239.63	10,066.0	-1,924.6	-121.4	1,928.4	0.00	0.00	Drillers TD @ 10,066' TVD

### Targets

Target Name - hit/miss target - Shape	Dip Angle (°)	Dip Dir. (°)	TVD (ft)	+N/-S (ft)	+E/-W (ft)	Northing (ft)	Easting (ft)	Latitude	Longitude
P27 595 EF08A-34 BHL - plan hits target center - Rectangle (sides W30.0 H50.0 D0.0)	0.00	0.00	9,966.0	-1,924.3	-120.9	1,643,898.80	2,285,919.43	39.573944	-108.033552
P27 595 EF08A-34 TGT - plan misses target center by 97.7ft at 6759.0ft MD (6416.0 TVD, -1914.3 N, -103.9 E) - Point	0.00	0.00	6,416.0	-2,011.3	-91.8	1,643,811.02	2,285,946.16	39.573705	-108.033448
P27 595 EF08A-34 BHL - plan misses target center by 97.2ft at 10319.3ft MD (9976.2 TVD, -1924.3 N, -121.0 E) - Rectangle (sides W30.0 H50.0 D0.0)	0.00	0.00	9,976.0	-2,021.3	-115.8	1,643,801.65	2,285,921.90	39.573678	-108.033533
P27 595 EF08A-34 TGT - plan hits target center - Point	0.00	0.00	6,406.0	-1,914.3	-103.9	1,643,908.30	2,285,936.73	39.573972	-108.033491

### Formations

Measured Depth (ft)	Vertical Depth (ft)	Name	Lithology	Dip (°)	Dip Direction (°)
6,709.0	6,366.0	Williams Fork (TVD)			
6,749.0	6,406.0	Top of Gas (TVD)			
10,309.0	9,966.0	Rollins TVD			

### Plan Annotations

Measured Depth (ft)	Vertical Depth (ft)	+N/-S (ft)	+E/-W (ft)	Comment
400.0	400.0	0.0	0.0	KOP @ 400'
1,437.4	1,417.3	0.0	18.6	EOB; Inc=21°
6,047.8	5,720.4	-139.6	60.1	Start Drop -3.00
6,749.0	6,406.0	-1,787.6	-92.2	EOD; Inc=0°
10,409.0	10,066.0	-1,914.3	-103.9	Drillers TD @ 10,066' TVD