

T5S, R95W, 6th P.M.

Encana OIL & GAS (USA) INC.

Well location, N. PARACHUTE EF08A-34 P27 595 (SURFACE LOCATION), located as shown in the SE 1/4 SE 1/4 of Section 27, T5S, R95W, 6th P.M., Garfield County, Colorado.

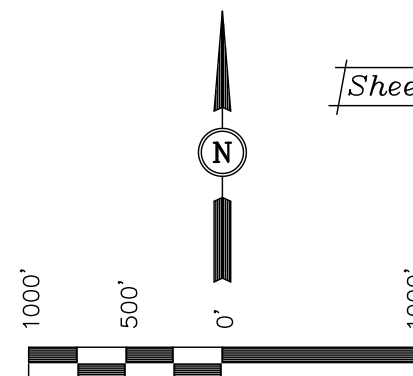
### BASIS OF ELEVATION

SPOT ELEVATION AT THE NORTHWEST CORNER OF SECTION 30, T5S, R95W, 6th P.M. TAKEN FROM THE FORKED GULCH QUADRANGLE, COLORADO, GARFIELD COUNTY, 7.5 MINUTE SERIES (TOPOGRAPHICAL MAP) PUBLISHED BY THE UNITED STATES DEPARTMENT OF THE INTERIOR, GEOLOGICAL SURVEY. SAID ELEVATION IS MARKED AS BEING 5966 FEET.

### BASIS OF BEARINGS

BASIS OF BEARINGS IS A G.P.S. OBSERVATION.

Sheet 1gg of 10



SCALE  
CERTIFICATE

THIS IS TO CERTIFY THAT THE ABOVE PLAT WAS PREPARED AND LOCATION AS SHOWN WAS STAKED ON THE GROUND FROM FIELD NOTES OF ACTUAL SURVEYS MADE BY ME OR UNDER MY SUPERVISION AND THAT THE SAME ARE TRUE AND CORRECT TO THE BEST OF MY KNOWLEDGE AND BELIEF.

REGISTERED LAND SURVEYOR  
REGISTRATION NO. 17492  
STATE OF COLORADO

Revised: 11-05-10 D.R.B.  
Revised: 09-15-10 D.R.B.

UINTAH ENGINEERING & LAND SURVEYING  
85 SOUTH 200 EAST - VERNAL, UTAH 84078  
(435) 789-1017

1" = 1000'

DATE SURVEYED: 11-01-08  
DATE DRAWN: 12-03-08

B.H. S.K. D.R.B.

REFERENCES  
G.L.O. PLAT

WEATHER  
COOL

FILE  
Encana OIL & GAS (USA) INC.

S89°36'45"W - 5269.81' (Meas.)

1916 Brass Cap  
1.2' High  
Lat: 39.592106°  
Long: 108.031260°

1916 Brass Cap  
1.0' High  
Lat: 39.592019°  
Long: 108.049953°

NOTE:  
THE PROPOSED BOTTOM HOLE FOR THIS WELL IS  
LOCATED IN THE SE 1/4 NE 1/4 OF SECTION  
34, T5S, R95W, 6th P.M. AT A DISTANCE OF  
1323' FNL 659' FEL. IT BEARS S09°07'21"W  
709.74' FROM THE PROPOSED WELL HEAD.

27

NOTE:  
SEE ADDENDUM FOR EXISTING  
IMPROVEMENT WITHIN 400' OF THE  
PROPOSED WELL DISTURBANCE.

1916 Brass Cap  
1.2' High  
Lat: 39.584839°  
Long: 108.031265°

N. PARACHUTE  
EF08A-34 P27 595  
Elev. Graded Ground = 6650'

1916 Brass Cap  
1.2' High  
Lat: 39.577570°  
Long: 108.040550°

1916 Brass Cap  
1.0' High, N-S  
Fenceline  
Lat: 39.39.577578°  
Long: 108.031210°

S89°54'43"W - 2639.14' (Meas.)

S89°53'06"W - 2633.38' (Meas.)

LINE TABLE		
LINE	BEARING	LENGTH
L1	N00°10'14"W	326.70'

PDOP = 2.1

NAD 83 (SURFACE LOCATION)  
LATITUDE = 39°34'45.21" (39.579225)  
LONGITUDE = 108°01'59.24" (108.033122)  
NAD 27 (SURFACE LOCATION)  
LATITUDE = 39°34'45.30" (39.579250)  
LONGITUDE = 108°01'56.97" (108.032492)

### LEGEND:

└─┘ = 90° SYMBOL

● = PROPOSED WELL HEAD.

▲ = SECTION CORNERS LOCATED.

*T5S, R95W, 6th P.M.*

**Encana OIL & GAS (USA) INC.**

Well location, N. PARACHUTE EF08A-34 P27 595 (TARGET BOTTOM HOLE), located as shown in the SE 1/4 NE 1/4 of Section 34, T5S, R95W, 6th P.M., Garfield County, Colorado.

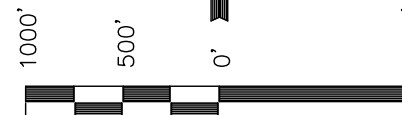
**BASIS OF ELEVATION**

SPOT ELEVATION AT THE NORTHWEST CORNER OF SECTION 30, T5S, R95W, 6th P.M. TAKEN FROM THE FORKED GULCH QUADRANGLE, COLORADO, GARFIELD COUNTY, 7.5 MINUTE SERIES (TOPOGRAPHICAL MAP) PUBLISHED BY THE UNITED STATES DEPARTMENT OF THE INTERIOR, GEOLOGICAL SURVEY. SAID ELEVATION IS MARKED AS BEING 5966 FEET.

**BASIS OF BEARINGS**

BASIS OF BEARINGS IS A G.P.S. OBSERVATION.

*Sheet 1hh of 10*



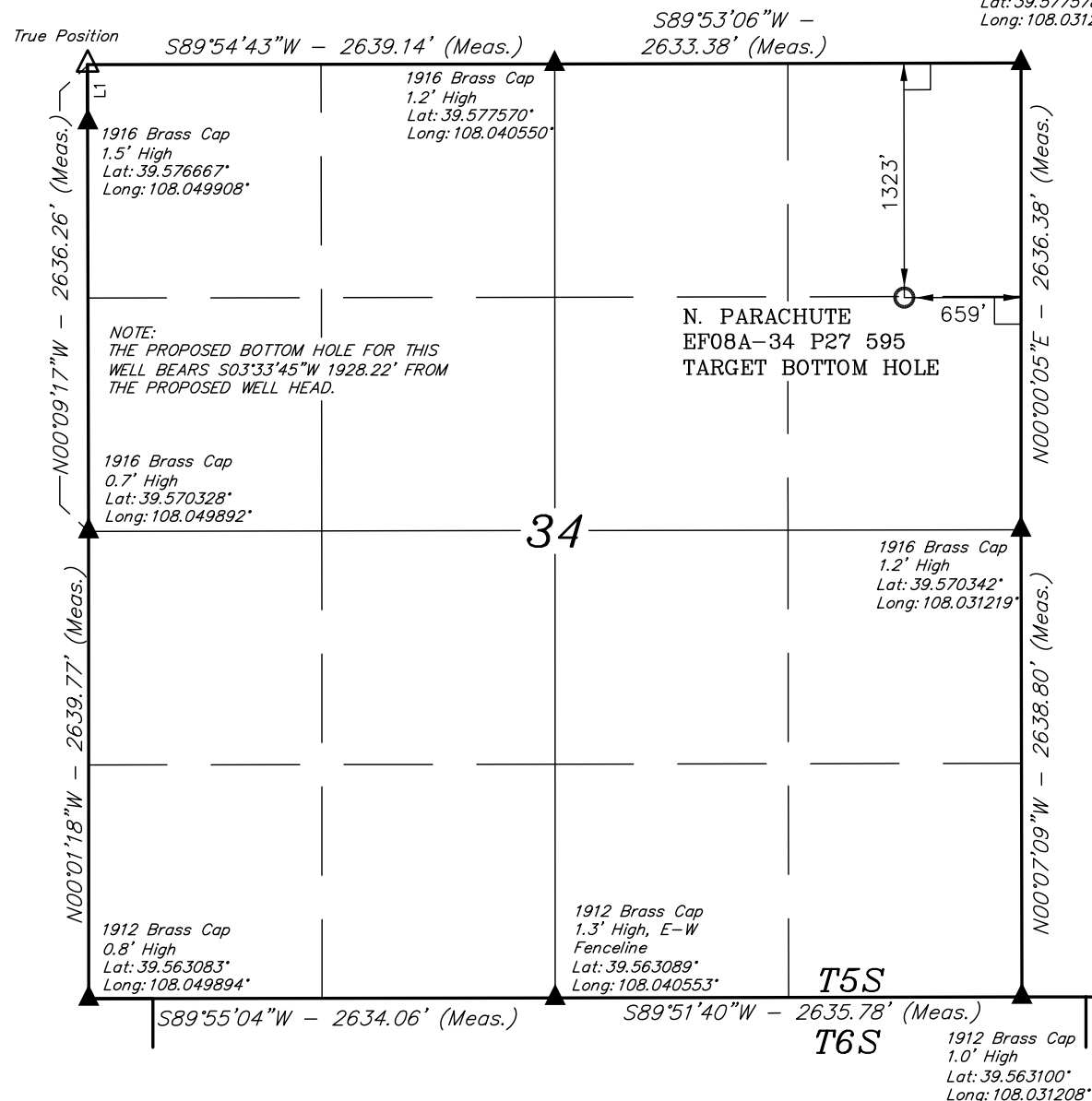
SCALE  
CERTIFICATE

THIS IS TO CERTIFY THAT THE ABOVE PLAT WAS PREPARED AND LOCATION AS SHOWN WAS STAKED ON THE GROUND FROM FIELD NOTES OF ACTUAL SURVEYS MADE BY ME OR UNDER MY SUPERVISION AND THAT THE SAME ARE TRUE AND CORRECT TO THE BEST OF MY KNOWLEDGE AND BELIEF.

REGISTERED LAND SURVEYOR  
REGISTRATION NO. 17492  
STATE OF COLORADO

Revised: 11-05-10 D.R.B.  
Revised: 09-15-10 D.R.B.

**UINTAH ENGINEERING & LAND SURVEYING**  
**85 SOUTH 200 EAST - VERNAL, UTAH 84078**  
(435) 789-1017



**LEGEND:**

- └─┘ = 90° SYMBOL
- = PROPOSED WELL HEAD.
- ▲ = SECTION CORNERS LOCATED.

NAD 83 (TARGET BOTTOM HOLE)	
LATITUDE	= 39°34'26.20" (39.573944)
LONGITUDE	= 108°02'00.79" (108.033553)
NAD 27 (TARGET BOTTOM HOLE)	
LATITUDE	= 39°34'26.28" (39.573967)
LONGITUDE	= 108°01'58.52" (108.032922)

1" = 1000'	DATE SURVEYED: 11-01-08	DATE DRAWN: 12-03-08
B.H. S.K. D.R.B.	REFERENCES G.L.O. PLAT	
WEATHER COOL	FILE Encana OIL & GAS (USA) INC.	