

T5S, R95W, 6th P.M.

Encana OIL & GAS (USA) INC.

Well location, N. PARACHUTE EF01E-34 P27 595 (SURFACE LOCATION), located as shown in the SE 1/4 SE 1/4 of Section 27, T5S, R95W, 6th P.M., Garfield County, Colorado.

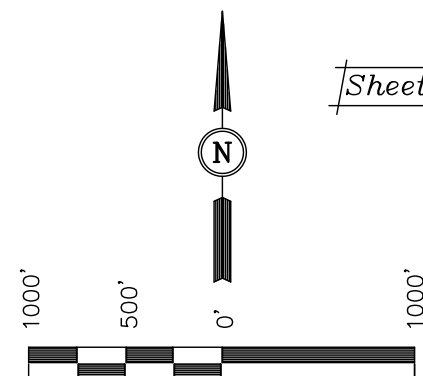
BASIS OF ELEVATION

SPOT ELEVATION AT THE NORTHWEST CORNER OF SECTION 30, T5S, R95W, 6th P.M. TAKEN FROM THE FORKED GULCH QUADRANGLE, COLORADO, GARFIELD COUNTY, 7.5 MINUTE SERIES (TOPOGRAPHICAL MAP) PUBLISHED BY THE UNITED STATES DEPARTMENT OF THE INTERIOR, GEOLOGICAL SURVEY. SAID ELEVATION IS MARKED AS BEING 5966 FEET.

BASIS OF BEARINGS

BASIS OF BEARINGS IS A G.P.S. OBSERVATION.

Sheet 1aa of 10



SCALE
CERTIFICATE

THIS IS TO CERTIFY THAT THE ABOVE PLAT WAS PREPARED AND LOCATION AS SHOWN WAS STAKED ON THE GROUND FROM FIELD NOTES OF ACTUAL SURVEYS MADE BY ME OR UNDER MY SUPERVISION AND THAT THE SAME ARE TRUE AND CORRECT TO THE BEST OF MY KNOWLEDGE AND BELIEF.

REGISTERED LAND SURVEYOR
REGISTRATION NO. 17492
STATE OF COLORADO

Revised: 11-05-10 D.R.B.
Revised: 09-15-10 D.R.B.

UINTAH ENGINEERING & LAND SURVEYING
85 SOUTH 200 EAST - VERNAL, UTAH 84078
(435) 789-1017

1" = 1000'

DATE SURVEYED: 11-01-08
DATE DRAWN: 12-03-08

B.H. S.K. D.R.B.

REFERENCES
G.L.O. PLAT

WEATHER
COOL

FILE
Encana OIL & GAS (USA) INC.

S89°36'45"W - 5269.81' (Meas.)

1916 Brass Cap
1.2' High
Lat: 39.592106°
Long: 108.031260°

N00°01'07"W - 2647.81' (Meas.)

1916 Brass Cap
1.2' High
Lat: 39.584839°
Long: 108.031265°

N00°22'55"W - 2645.47' (Meas.)

1916 Brass Cap
1.2' High
Lat: 39.577570°
Long: 108.040550°

1916 Brass Cap
1.0' High, N-S
Fenceline
Lat: 39.39.577578°
Long: 108.031210°

LINE TABLE		
LINE	BEARING	LENGTH
L1	N00°10'14"W	326.70'

PDOP = 2.1

NAD 83 (SURFACE LOCATION)
LATITUDE = 39°34'45.18" (39.579217)
LONGITUDE = 108°01'59.33" (108.033147)
NAD 27 (SURFACE LOCATION)
LATITUDE = 39°34'45.26" (39.579239)
LONGITUDE = 108°01'57.06" (108.032517)

NOTE:
THE PROPOSED BOTTOM HOLE FOR THIS WELL IS
LOCATED IN THE NE 1/4 NE 1/4 OF SECTION
34, T5S, R95W, 6th P.M. AT A DISTANCE OF
866' FNL 657' FEL. IT BEARS S04°17'23"W
1467.91' FROM THE PROPOSED WELL HEAD.

NOTE:
SEE ADDENDUM FOR EXISTING
IMPROVEMENT WITHIN 400' OF THE
PROPOSED WELL DISTURBANCE.

N. PARACHUTE
EF01E-34 P27 595
Elev. Graded Ground = 6650'

N00°10'14"W - 5266.93' (Meas.)

1916 Brass Cap
1.5' High
Lat: 39.576667°
Long: 108.049907°

LEGEND:

- └─┘ = 90° SYMBOL
- = PROPOSED WELL HEAD.
- ▲ = SECTION CORNERS LOCATED.

NAD 83 (TARGET BOTTOM HOLE)	
LATITUDE	= 39°34'30.72" (39.575200)
LONGITUDE	= 108°02'00.75" (108.033542)
NAD 27 (TARGET BOTTOM HOLE)	
LATITUDE	= 39°34'30.80" (39.575222)
LONGITUDE	= 108°01'58.48" (108.032911)