

MULTI WELL PLAN

DALEY LAND SURVEYING, INC.

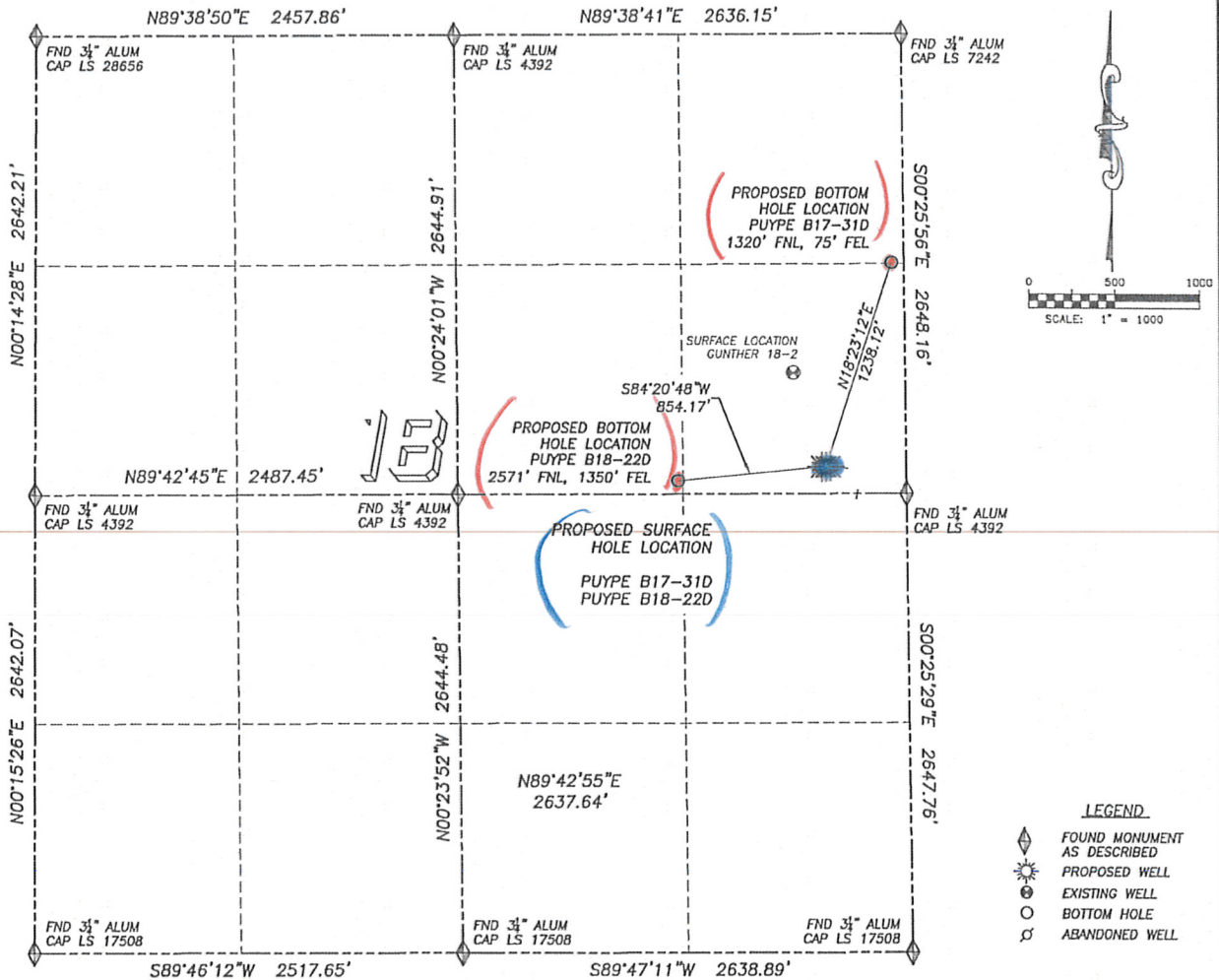
PARKER, CO. 80134

303 953 9841

DIRECTIONAL LAYOUT

PUYPE B17-31D, PUYPE B18-22D

SECTION 18, TOWNSHIP 5 NORTH, RANGE 64 WEST OF THE 6TH PRINCIPAL MERIDIAN



NAD 83 LATITUDE AND LONGITUDE

PUYPE B17-32D SURFACE HOLE:

LATITUDE: N40.39959°
LONGITUDE: W104.58506°
ELEVATION: 4622'
PDOP 2.2
2493' FNL, 449' FEL

BOTTOM HOLE:

LATITUDE: N40.39951°
LONGITUDE: W104.58372°
2525' FNL, 75' FEL

NEAREST EXISTING WELL:

GUNTHER 18-2 SURFACE HOLE
LATITUDE: N40.40107°
LONGITUDE: W104.58584°
ELEVATION: 4624'
582' NORTHWEST

NAD 83 LATITUDE AND LONGITUDE

PUYPE B18-22D SURFACE HOLE:

LATITUDE: N40.39959°
LONGITUDE: W104.58524°
ELEVATION: 4621'
PDOP 2.1
2493' FNL, 499' FEL

BOTTOM HOLE:

LATITUDE: N40.39936°
LONGITUDE: W104.58829°
2571' FNL, 1350' FEL

NEAREST EXISTING WELL:

GUNTHER 18-2 SURFACE HOLE
LATITUDE: N40.40107°
LONGITUDE: W104.58584°
ELEVATION: 4624'
565' NORTHWEST