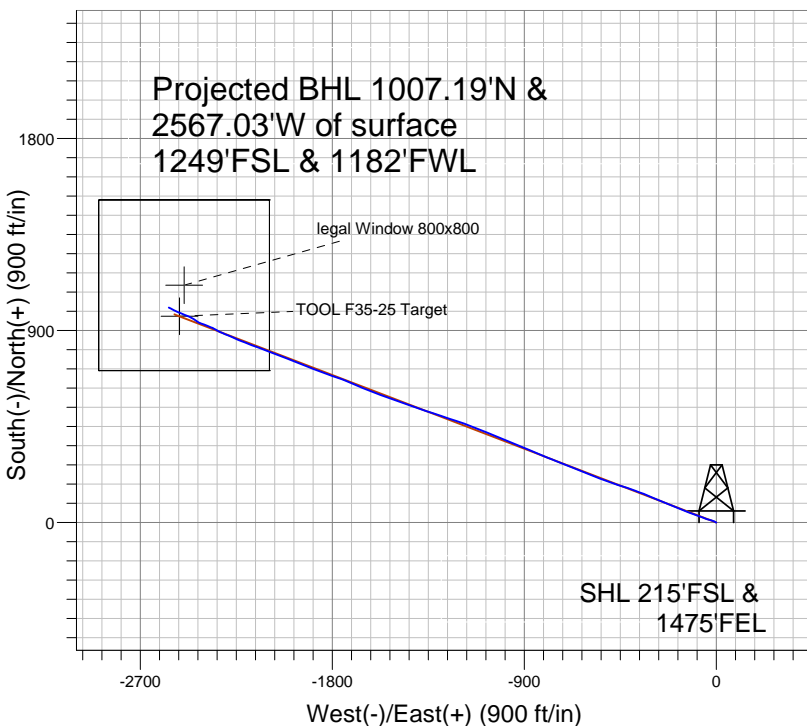
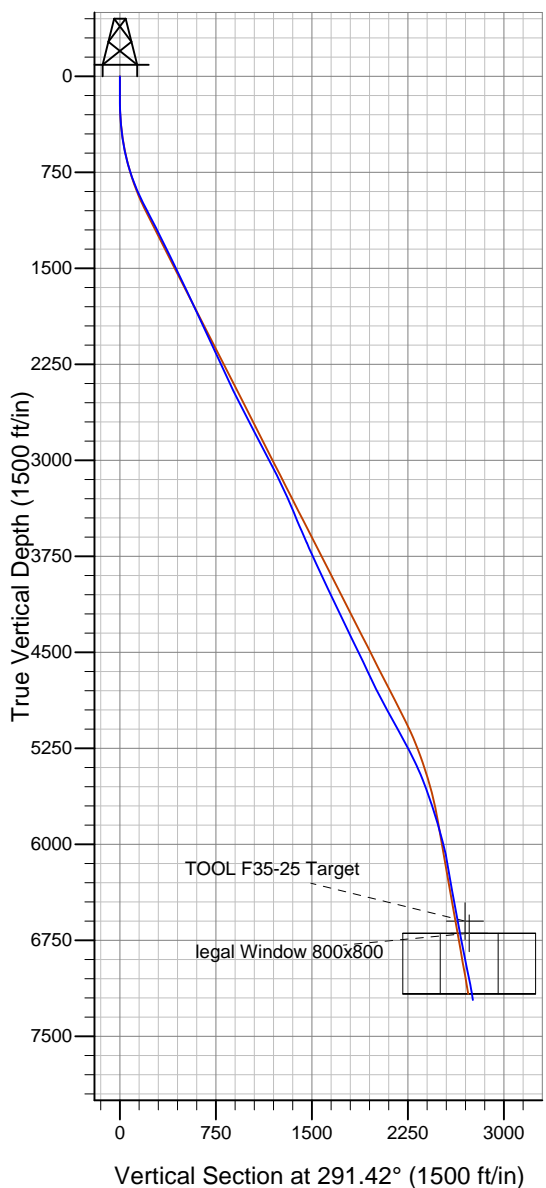


Well Name: **TOOL F 35-25**  
 Surface Location: Tool Pad SEC.35-T5N-R65W  
 North American Datum 1983 , US State Plane 1983 , Colorado Northern Zone  
 Ground Elevation: 4684.0  

+N/-S	+E/-W	Northing	Easting	Latitude	Longitude	Slot
0.0	0.0	1371199.99	3243541.30	40° 20' 56.585 N	104° 37' 34.320 W	TOOL F35-25

 Original Well Elev WELL @ 4698.0ft (Original Well Elev)

## NOBLE ENERGY INC WELD COUNTY CO



### LEGEND

- TOOL F 35-25, TOOL F35-25, Design #1 V0
- TOOL F 35-25, TOOL F35-25, Design #2 4/17/08 V0
- TOOL F35-25

## Final Survey Plot

Projected Final Survey -  
 7797'MD & 7217.45'TVD  
 @ 2757.48' VS  
 9.2 deg Inc 296.20 deg AZ

Project: Sec.35-T5N-R65W  
 Site: Tool Pad SEC.35-T5N-R65W  
 Well: TOOL F 35-25  
 Plan: TOOL F35-25



# **NOBLE ENERGY INC WELD COUNTY CO**

**Sec.35-T5N-R65W**

**Tool Pad SEC.35-T5N-R65W**

**TOOL F 35-25 - Slot TOOL F35-25**

**TOOL F35-25**

**Design: TOOL F35-25**

## **Standard Survey Report**

**01 May, 2008**



<b>Company:</b>	NOBLE ENERGY INC WELD COUNTY CO	<b>Local Co-ordinate Reference:</b>	Well TOOL F 35-25 - Slot TOOL F35-25
<b>Project:</b>	Sec.35-T5N-R65W	<b>TVD Reference:</b>	WELL @ 4698.0ft (Original Well Elev)
<b>Site:</b>	Tool Pad SEC.35-T5N-R65W	<b>MD Reference:</b>	WELL @ 4698.0ft (Original Well Elev)
<b>Well:</b>	TOOL F 35-25	<b>North Reference:</b>	True
<b>Wellbore:</b>	TOOL F35-25	<b>Survey Calculation Method:</b>	Minimum Curvature
<b>Design:</b>	TOOL F35-25	<b>Database:</b>	Landmark

<b>Project</b>	Sec.35-T5N-R65W, Weld County CO		
<b>Map System:</b>	US State Plane 1983	<b>System Datum:</b>	Mean Sea Level
<b>Geo Datum:</b>	North American Datum 1983		
<b>Map Zone:</b>	Colorado Northern Zone		Using geodetic scale factor

<b>Site</b>	Tool Pad SEC.35-T5N-R65W		
<b>Site Position:</b>		<b>Northing:</b>	1,371,225.00ft
<b>From:</b>	Lat/Long	<b>Easting:</b>	3,243,541.05ft
<b>Position Uncertainty:</b>	0.0 ft	<b>Slot Radius:</b>	"
		<b>Latitude:</b>	40° 20' 56.832 N
		<b>Longitude:</b>	104° 37' 34.320 W
		<b>Grid Convergence:</b>	0.56 °

<b>Well</b>	TOOL F 35-25 - Slot TOOL F35-25		
<b>Well Position</b>	<b>+N/-S</b>	0.0 ft	<b>Northing:</b>
	<b>+E/-W</b>	0.0 ft	<b>Easting:</b>
<b>Position Uncertainty</b>	0.0 ft	<b>Wellhead Elevation:</b>	ft
		<b>Latitude:</b>	40° 20' 56.585 N
		<b>Longitude:</b>	104° 37' 34.320 W
		<b>Ground Level:</b>	4,684.0 ft

<b>Wellbore</b>	TOOL F35-25				
<b>Magnetics</b>	<b>Model Name</b>	<b>Sample Date</b>	<b>Declination (°)</b>	<b>Dip Angle (°)</b>	<b>Field Strength (nT)</b>
	IGRF200510	10/3/2007	9.25	67.17	53,526
	IGRF200510	4/17/2008	9.18	67.15	53,470

<b>Design</b>	TOOL F35-25				
<b>Audit Notes:</b>					
<b>Version:</b>	1.0	<b>Phase:</b>	ACTUAL	<b>Tie On Depth:</b>	0.0
<b>Vertical Section:</b>	<b>Depth From (TVD) (ft)</b>	<b>+N/-S (ft)</b>	<b>+E/-W (ft)</b>	<b>Direction (°)</b>	
	0.0	0.0	0.0	291.42	

<b>Survey Program</b>	<b>Date</b>	5/1/2008			
<b>From (ft)</b>	<b>To (ft)</b>	<b>Survey (Wellbore)</b>	<b>Tool Name</b>	<b>Description</b>	
120.0	7,797.0	Survey #1 (TOOL F35-25)	MWD	MWD - Standard	

<b>Survey</b>										
<b>Measured Depth (ft)</b>	<b>Inclination (°)</b>	<b>Azimuth (°)</b>	<b>Vertical Depth (ft)</b>	<b>+N/-S (ft)</b>	<b>+E/-W (ft)</b>	<b>Vertical Section (ft)</b>	<b>Dogleg Rate (°/100ft)</b>	<b>Build Rate (°/100ft)</b>	<b>Turn Rate (°/100ft)</b>	
0.0	0.00	0.00	0.0	0.0	0.0	0.0	0.00	0.00	0.00	
40.0	0.07	150.50	40.0	0.0	0.0	0.0	0.17	0.17	0.00	
80.0	0.13	150.50	80.0	-0.1	0.0	-0.1	0.17	0.17	0.00	
120.0	0.20	150.50	120.0	-0.2	0.1	-0.2	0.17	0.17	0.00	
160.0	0.16	227.50	160.0	-0.3	0.1	-0.2	0.57	-0.10	192.51	
200.0	0.34	262.82	200.0	-0.3	-0.1	-0.1	0.57	0.44	88.30	
240.0	1.31	293.46	240.0	-0.2	-0.5	0.4	2.58	2.42	76.61	
280.0	2.67	298.97	280.0	0.4	-1.8	1.8	3.45	3.42	13.76	
320.0	3.85	299.62	319.9	1.6	-3.8	4.1	2.94	2.94	1.64	
360.0	4.73	298.55	359.8	3.0	-6.4	7.1	2.21	2.20	-2.67	
400.0	5.64	297.01	399.6	4.7	-9.6	10.6	2.30	2.27	-3.86	
440.0	6.78	291.23	439.4	6.5	-13.5	15.0	3.26	2.86	-14.45	

<b>Company:</b>	NOBLE ENERGY INC WELD COUNTY CO	<b>Local Co-ordinate Reference:</b>	Well TOOL F 35-25 - Slot TOOL F35-25
<b>Project:</b>	Sec.35-T5N-R65W	<b>TVD Reference:</b>	WELL @ 4698.0ft (Original Well Elev)
<b>Site:</b>	Tool Pad SEC.35-T5N-R65W	<b>MD Reference:</b>	WELL @ 4698.0ft (Original Well Elev)
<b>Well:</b>	TOOL F 35-25	<b>North Reference:</b>	True
<b>Wellbore:</b>	TOOL F35-25	<b>Survey Calculation Method:</b>	Minimum Curvature
<b>Design:</b>	TOOL F35-25	<b>Database:</b>	Landmark

Survey										
Measured Depth (ft)	Inclination (°)	Azimuth (°)	Vertical Depth (ft)	+N/-S (ft)	+E/-W (ft)	Vertical Section (ft)	Dogleg Rate (°/100ft)	Build Rate (°/100ft)	Turn Rate (°/100ft)	
480.0	7.98	287.14	479.1	8.1	-18.4	20.1	3.26	2.99	-10.22	
520.0	9.18	287.32	518.6	9.9	-24.1	26.0	3.00	3.00	0.44	
560.0	10.38	287.77	558.0	11.9	-30.6	32.8	3.01	3.00	1.12	
600.0	11.82	288.07	597.3	14.3	-37.9	40.5	3.61	3.61	0.76	
640.0	13.40	288.28	636.3	17.0	-46.2	49.2	3.94	3.94	0.53	
680.0	15.02	288.74	675.1	20.1	-55.5	59.0	4.07	4.06	1.14	
720.0	16.76	289.71	713.6	23.7	-65.8	69.9	4.40	4.34	2.43	
760.0	18.50	290.50	751.7	27.9	-77.2	82.0	4.40	4.35	1.98	
800.0	19.80	290.69	789.5	32.5	-89.5	95.2	3.26	3.26	0.47	
840.0	21.11	290.85	826.9	37.5	-102.5	109.1	3.26	3.26	0.41	
880.0	22.53	290.43	864.1	42.7	-116.4	124.0	3.58	3.56	-1.06	
920.0	24.01	289.83	900.8	48.2	-131.3	139.8	3.74	3.70	-1.51	
960.0	25.24	290.07	937.2	53.8	-147.0	156.5	3.08	3.07	0.60	
1,000.0	26.09	291.44	973.2	59.9	-163.2	173.8	2.60	2.14	3.41	
1,040.0	26.48	291.83	1,009.1	66.5	-179.7	191.6	1.06	0.96	0.99	
1,080.0	26.79	292.09	1,044.8	73.2	-196.3	209.5	0.84	0.79	0.65	
1,120.0	27.11	292.35	1,080.5	80.1	-213.1	227.6	0.84	0.79	0.64	
1,160.0	27.30	292.76	1,116.1	87.1	-230.0	245.9	0.66	0.47	1.01	
1,200.0	27.30	293.39	1,151.6	94.3	-246.9	264.3	0.73	0.00	1.60	
1,240.0	27.28	293.97	1,187.1	101.6	-263.7	282.6	0.66	-0.03	1.44	
1,280.0	26.99	293.38	1,222.7	109.0	-280.4	300.8	1.01	-0.75	-1.47	
1,320.0	26.69	292.78	1,258.4	116.0	-297.0	318.9	1.01	-0.74	-1.50	
1,360.0	26.60	292.24	1,294.2	122.9	-313.6	336.8	0.65	-0.22	-1.35	
1,400.0	26.60	291.73	1,330.0	129.6	-330.2	354.7	0.57	0.00	-1.28	
1,440.0	26.45	291.14	1,365.7	136.2	-346.8	372.6	0.76	-0.37	-1.48	
1,480.0	26.02	290.38	1,401.6	142.4	-363.3	390.3	1.36	-1.07	-1.90	
1,520.0	25.60	289.60	1,437.6	148.4	-379.7	407.7	1.36	-1.06	-1.95	
1,560.0	25.43	289.05	1,473.7	154.1	-396.0	424.9	0.73	-0.43	-1.37	
1,600.0	25.26	288.50	1,509.9	159.6	-412.2	442.0	0.73	-0.42	-1.39	
1,640.0	25.42	288.61	1,546.0	165.0	-428.4	459.1	0.42	0.40	0.29	
1,680.0	25.76	289.08	1,582.1	170.6	-444.7	476.3	0.99	0.85	1.17	
1,720.0	25.95	289.24	1,618.1	176.3	-461.2	493.8	0.50	0.47	0.39	
1,760.0	25.78	288.69	1,654.1	182.0	-477.7	511.2	0.74	-0.43	-1.38	
1,800.0	25.61	288.13	1,690.1	187.5	-494.2	528.5	0.74	-0.42	-1.39	
1,840.0	25.36	288.18	1,726.2	192.8	-510.5	545.7	0.63	-0.63	0.13	
1,880.0	25.10	288.27	1,762.4	198.2	-526.7	562.7	0.64	-0.64	0.21	
1,920.0	24.83	289.43	1,798.7	203.6	-542.7	579.6	1.40	-0.67	2.91	
1,960.0	24.58	291.34	1,835.0	209.4	-558.4	596.3	2.10	-0.64	4.78	
2,000.0	24.42	292.84	1,871.4	215.7	-573.7	612.9	1.60	-0.39	3.75	
2,040.0	24.51	293.01	1,907.8	222.1	-589.0	629.4	0.28	0.21	0.43	
2,080.0	24.59	293.18	1,944.2	228.6	-604.3	646.1	0.28	0.21	0.42	
2,120.0	25.03	292.52	1,980.5	235.2	-619.7	662.8	1.30	1.09	-1.66	
2,160.0	25.51	291.79	2,016.7	241.6	-635.6	679.9	1.43	1.20	-1.83	
2,200.0	25.70	291.78	2,052.8	248.0	-651.7	697.2	0.48	0.48	-0.01	
2,240.0	25.70	292.25	2,088.8	254.5	-667.7	714.6	0.51	0.00	1.17	
2,280.0	25.64	292.49	2,124.9	261.1	-683.8	731.9	0.30	-0.16	0.59	
2,320.0	25.38	292.02	2,161.0	267.6	-699.7	749.1	0.81	-0.64	-1.16	
2,360.0	25.13	291.55	2,197.1	274.0	-715.6	766.2	0.81	-0.64	-1.18	
2,400.0	24.76	291.28	2,233.4	280.1	-731.3	783.1	0.97	-0.93	-0.68	
2,440.0	24.37	291.02	2,269.8	286.1	-746.8	799.7	0.99	-0.96	-0.64	
2,480.0	24.41	291.19	2,306.2	292.0	-762.1	816.1	0.20	0.09	0.43	
2,520.0	24.79	291.70	2,342.6	298.1	-777.6	832.8	1.10	0.96	1.28	
2,560.0	25.16	292.13	2,378.9	304.4	-793.3	849.7	1.03	0.92	1.09	
2,600.0	25.46	292.31	2,415.0	310.9	-809.1	866.8	0.77	0.74	0.43	

<b>Company:</b>	NOBLE ENERGY INC WELD COUNTY CO	<b>Local Co-ordinate Reference:</b>	Well TOOL F 35-25 - Slot TOOL F35-25
<b>Project:</b>	Sec.35-T5N-R65W	<b>TVD Reference:</b>	WELL @ 4698.0ft (Original Well Elev)
<b>Site:</b>	Tool Pad SEC.35-T5N-R65W	<b>MD Reference:</b>	WELL @ 4698.0ft (Original Well Elev)
<b>Well:</b>	TOOL F 35-25	<b>North Reference:</b>	True
<b>Wellbore:</b>	TOOL F35-25	<b>Survey Calculation Method:</b>	Minimum Curvature
<b>Design:</b>	TOOL F35-25	<b>Database:</b>	Landmark

Survey									
Measured Depth (ft)	Inclination (°)	Azimuth (°)	Vertical Depth (ft)	+N/-S (ft)	+E/-W (ft)	Vertical Section (ft)	Dogleg Rate (°/100ft)	Build Rate (°/100ft)	Turn Rate (°/100ft)
2,640.0	25.76	292.48	2,451.1	317.5	-825.1	884.1	0.77	0.74	0.42
2,680.0	26.09	292.65	2,487.1	324.2	-841.3	901.5	0.86	0.83	0.43
2,720.0	26.43	292.82	2,523.0	331.0	-857.6	919.2	0.87	0.85	0.42
2,760.0	26.73	293.03	2,558.7	338.0	-874.1	937.1	0.78	0.74	0.53
2,800.0	26.98	293.29	2,594.4	345.1	-890.7	955.2	0.70	0.64	0.64
2,840.0	27.24	293.47	2,630.0	352.3	-907.4	973.4	0.67	0.64	0.47
2,880.0	27.50	293.30	2,665.5	359.6	-924.3	991.8	0.68	0.64	-0.43
2,920.0	27.75	293.13	2,701.0	367.0	-941.3	1,010.3	0.68	0.65	-0.43
2,960.0	27.76	292.57	2,736.4	374.2	-958.5	1,029.0	0.65	0.02	-1.39
3,000.0	27.72	291.94	2,771.8	381.3	-975.7	1,047.6	0.75	-0.11	-1.60
3,040.0	27.54	291.62	2,807.2	388.1	-993.0	1,066.2	0.59	-0.46	-0.79
3,080.0	27.20	291.66	2,842.7	394.9	-1,010.1	1,084.5	0.85	-0.85	0.11
3,120.0	26.97	291.68	2,878.3	401.6	-1,027.0	1,102.7	0.57	-0.57	0.05
3,160.0	27.52	291.55	2,913.9	408.4	-1,044.0	1,121.0	1.39	1.38	-0.33
3,200.0	28.08	291.43	2,949.3	415.2	-1,061.4	1,139.7	1.39	1.38	-0.31
3,240.0	27.94	291.72	2,984.6	422.1	-1,078.9	1,158.5	0.49	-0.35	0.74
3,280.0	27.60	292.15	3,020.0	429.1	-1,096.2	1,177.2	0.99	-0.85	1.07
3,320.0	27.22	292.35	3,055.5	436.1	-1,113.2	1,195.6	0.97	-0.94	0.49
3,360.0	26.79	292.22	3,091.1	443.0	-1,130.0	1,213.7	1.07	-1.06	-0.32
3,400.0	26.33	292.01	3,126.9	449.7	-1,146.6	1,231.6	1.19	-1.17	-0.53
3,440.0	25.34	290.75	3,162.9	456.1	-1,162.8	1,249.1	2.82	-2.46	-3.15
3,480.0	24.37	289.39	3,199.2	461.8	-1,178.6	1,265.9	2.82	-2.44	-3.39
3,520.0	24.07	288.73	3,235.7	467.1	-1,194.1	1,282.2	1.01	-0.74	-1.66
3,560.0	24.03	288.35	3,272.2	472.3	-1,209.5	1,298.5	0.40	-0.10	-0.94
3,600.0	23.90	288.19	3,308.8	477.4	-1,225.0	1,314.7	0.35	-0.31	-0.40
3,640.0	23.60	288.49	3,345.4	482.5	-1,240.3	1,330.8	0.80	-0.75	0.74
3,680.0	23.31	288.79	3,382.1	487.6	-1,255.4	1,346.7	0.80	-0.74	0.76
3,720.0	23.13	288.43	3,418.8	492.6	-1,270.3	1,362.5	0.56	-0.44	-0.91
3,760.0	22.96	288.05	3,455.6	497.5	-1,285.2	1,378.1	0.57	-0.42	-0.96
3,800.0	23.19	287.95	3,492.5	502.3	-1,300.0	1,393.7	0.58	0.57	-0.23
3,840.0	23.66	288.04	3,529.2	507.2	-1,315.2	1,409.6	1.17	1.17	0.21
3,880.0	23.92	288.18	3,565.7	512.3	-1,330.6	1,425.7	0.66	0.64	0.35
3,920.0	23.62	288.47	3,602.4	517.3	-1,345.9	1,441.8	0.80	-0.75	0.74
3,960.0	23.32	288.78	3,639.0	522.4	-1,361.0	1,457.7	0.80	-0.74	0.76
4,000.0	23.84	288.96	3,675.7	527.6	-1,376.1	1,473.7	1.30	1.28	0.45
4,040.0	24.43	289.13	3,712.2	532.9	-1,391.5	1,490.0	1.50	1.49	0.42
4,080.0	24.72	289.15	3,748.6	538.4	-1,407.3	1,506.7	0.73	0.73	0.07
4,120.0	24.77	289.07	3,784.9	543.9	-1,423.1	1,523.4	0.14	0.11	-0.21
4,160.0	24.84	289.07	3,821.2	549.4	-1,439.0	1,540.2	0.19	0.19	0.00
4,200.0	25.05	289.41	3,857.5	554.9	-1,454.9	1,557.1	0.64	0.53	0.86
4,240.0	25.27	289.75	3,893.7	560.6	-1,470.9	1,574.1	0.64	0.53	0.84
4,280.0	25.05	289.62	3,929.9	566.4	-1,486.9	1,591.1	0.57	-0.55	-0.32
4,320.0	24.75	289.41	3,966.2	572.0	-1,502.8	1,607.9	0.78	-0.74	-0.53
4,360.0	24.69	289.39	4,002.5	577.5	-1,518.6	1,624.6	0.16	-0.16	-0.06
4,400.0	24.86	289.56	4,038.8	583.1	-1,534.4	1,641.3	0.46	0.43	0.43
4,440.0	25.10	289.80	4,075.1	588.8	-1,550.3	1,658.2	0.66	0.60	0.61
4,480.0	25.74	290.46	4,111.2	594.7	-1,566.4	1,675.4	1.76	1.61	1.65
4,520.0	26.39	291.09	4,147.2	600.9	-1,582.8	1,692.9	1.76	1.62	1.58
4,560.0	25.97	291.10	4,183.0	607.3	-1,599.3	1,710.6	1.03	-1.03	0.01
4,600.0	25.34	290.97	4,219.1	613.5	-1,615.5	1,728.0	1.60	-1.60	-0.32
4,640.0	25.16	291.36	4,255.3	619.6	-1,631.3	1,744.9	0.60	-0.44	0.96
4,680.0	25.50	292.30	4,291.5	626.0	-1,647.2	1,762.0	1.32	0.85	2.35
4,720.0	25.83	293.13	4,327.5	632.7	-1,663.2	1,779.4	1.23	0.83	2.09
4,760.0	26.09	293.39	4,363.5	639.6	-1,679.3	1,796.9	0.70	0.64	0.64

<b>Company:</b>	NOBLE ENERGY INC WELD COUNTY CO	<b>Local Co-ordinate Reference:</b>	Well TOOL F 35-25 - Slot TOOL F35-25
<b>Project:</b>	Sec.35-T5N-R65W	<b>TVD Reference:</b>	WELL @ 4698.0ft (Original Well Elev)
<b>Site:</b>	Tool Pad SEC.35-T5N-R65W	<b>MD Reference:</b>	WELL @ 4698.0ft (Original Well Elev)
<b>Well:</b>	TOOL F 35-25	<b>North Reference:</b>	True
<b>Wellbore:</b>	TOOL F35-25	<b>Survey Calculation Method:</b>	Minimum Curvature
<b>Design:</b>	TOOL F35-25	<b>Database:</b>	Landmark

Survey										
Measured Depth (ft)	Inclination (°)	Azimuth (°)	Vertical Depth (ft)	+N/-S (ft)	+E/-W (ft)	Vertical Section (ft)	Dogleg Rate (°/100ft)	Build Rate (°/100ft)	Turn Rate (°/100ft)	
4,800.0	26.34	293.64	4,399.4	646.6	-1,695.5	1,814.5	0.70	0.64	0.63	
4,840.0	26.36	293.11	4,435.2	653.7	-1,711.8	1,832.3	0.60	0.06	-1.34	
4,880.0	26.32	292.34	4,471.0	660.6	-1,728.2	1,850.0	0.86	-0.11	-1.92	
4,920.0	26.04	291.50	4,506.9	667.2	-1,744.6	1,867.7	1.16	-0.70	-2.10	
4,960.0	25.45	290.53	4,542.9	673.4	-1,760.8	1,885.1	1.83	-1.49	-2.42	
5,000.0	24.91	289.56	4,579.2	679.2	-1,776.8	1,902.1	1.69	-1.34	-2.44	
5,040.0	25.08	289.00	4,615.4	684.8	-1,792.7	1,919.0	0.72	0.42	-1.39	
5,080.0	25.25	288.45	4,651.6	690.3	-1,808.8	1,936.0	0.72	0.43	-1.38	
5,120.0	25.79	288.91	4,687.7	695.8	-1,825.1	1,953.2	1.43	1.35	1.15	
5,160.0	26.47	289.72	4,723.6	701.6	-1,841.8	1,970.8	1.92	1.70	2.02	
5,200.0	26.87	290.28	4,759.3	707.8	-1,858.7	1,988.8	1.17	0.99	1.41	
5,240.0	26.78	290.49	4,795.0	714.1	-1,875.6	2,006.8	0.32	-0.21	0.53	
5,280.0	26.71	290.72	4,830.8	720.4	-1,892.4	2,024.8	0.31	-0.18	0.56	
5,320.0	27.13	291.37	4,866.4	726.9	-1,909.3	2,042.9	1.29	1.06	1.63	
5,360.0	27.56	292.00	4,902.0	733.7	-1,926.4	2,061.3	1.29	1.07	1.58	
5,400.0	27.90	292.23	4,937.4	740.7	-1,943.7	2,079.9	0.90	0.86	0.58	
5,440.0	28.20	292.27	4,972.7	747.8	-1,961.1	2,098.7	0.75	0.75	0.11	
5,480.0	28.49	292.21	5,007.9	755.0	-1,978.7	2,117.7	0.72	0.71	-0.16	
5,520.0	28.74	291.95	5,043.0	762.2	-1,996.4	2,136.9	0.71	0.64	-0.64	
5,560.0	29.00	291.70	5,078.0	769.4	-2,014.3	2,156.2	0.71	0.64	-0.63	
5,600.0	28.91	291.40	5,113.0	776.5	-2,032.4	2,175.6	0.42	-0.21	-0.74	
5,640.0	28.83	291.10	5,148.0	783.5	-2,050.4	2,194.9	0.42	-0.21	-0.75	
5,680.0	28.77	290.65	5,183.1	790.4	-2,068.4	2,214.1	0.57	-0.15	-1.15	
5,720.0	28.73	290.10	5,218.2	797.1	-2,086.4	2,233.4	0.67	-0.11	-1.37	
5,760.0	28.43	289.77	5,253.2	803.6	-2,104.4	2,252.6	0.85	-0.75	-0.83	
5,800.0	27.45	290.01	5,288.6	810.0	-2,122.1	2,271.3	2.46	-2.45	0.62	
5,840.0	26.47	290.28	5,324.2	816.2	-2,139.1	2,289.4	2.46	-2.45	0.66	
5,880.0	25.30	290.56	5,360.2	822.3	-2,155.5	2,306.9	2.96	-2.94	0.70	
5,920.0	24.11	290.86	5,396.6	828.2	-2,171.1	2,323.6	3.00	-2.98	0.76	
5,960.0	23.15	291.23	5,433.2	834.0	-2,186.0	2,339.6	2.41	-2.38	0.93	
6,000.0	22.38	291.66	5,470.1	839.6	-2,200.4	2,355.1	1.98	-1.94	1.07	
6,040.0	21.61	292.12	5,507.2	845.2	-2,214.3	2,370.1	1.97	-1.92	1.14	
6,080.0	20.85	292.61	5,544.5	850.7	-2,227.7	2,384.6	1.95	-1.90	1.22	
6,120.0	20.09	293.13	5,581.9	856.2	-2,240.6	2,398.5	1.95	-1.89	1.31	
6,160.0	19.40	293.27	5,619.6	861.5	-2,253.0	2,412.0	1.75	-1.74	0.35	
6,200.0	18.71	293.36	5,657.4	866.7	-2,265.0	2,425.1	1.72	-1.72	0.22	
6,240.0	18.22	293.03	5,695.4	871.7	-2,276.6	2,437.7	1.25	-1.23	-0.81	
6,280.0	17.89	292.35	5,733.4	876.5	-2,288.1	2,450.1	0.98	-0.82	-1.71	
6,320.0	17.56	291.64	5,771.5	881.0	-2,299.4	2,462.3	0.98	-0.81	-1.77	
6,360.0	16.84	293.11	5,809.7	885.5	-2,310.4	2,474.2	2.11	-1.81	3.66	
6,400.0	16.03	295.30	5,848.1	890.1	-2,320.7	2,485.5	2.54	-2.02	5.48	
6,440.0	15.46	297.02	5,886.6	894.9	-2,330.4	2,496.2	1.84	-1.42	4.31	
6,480.0	15.17	297.99	5,925.1	899.8	-2,339.7	2,506.7	0.98	-0.75	2.43	
6,520.0	14.81	298.67	5,963.8	904.7	-2,348.8	2,517.0	0.99	-0.88	1.70	
6,560.0	13.95	296.26	6,002.5	909.3	-2,357.7	2,526.9	2.63	-2.17	-6.04	
6,600.0	13.11	293.53	6,041.4	913.3	-2,366.1	2,536.2	2.63	-2.10	-6.81	
6,640.0	12.17	292.58	6,080.4	916.7	-2,374.2	2,545.0	2.41	-2.35	-2.39	
6,680.0	11.19	292.24	6,119.6	919.7	-2,381.7	2,553.1	2.45	-2.45	-0.86	
6,720.0	10.46	291.92	6,158.9	922.5	-2,388.6	2,560.5	1.82	-1.81	-0.79	
6,760.0	10.12	291.71	6,198.3	925.2	-2,395.2	2,567.7	0.87	-0.86	-0.53	
6,800.0	9.79	291.40	6,237.7	927.7	-2,401.7	2,574.6	0.84	-0.83	-0.78	
6,840.0	9.61	289.98	6,277.1	930.1	-2,408.0	2,581.3	0.74	-0.43	-3.54	
6,880.0	9.45	288.51	6,316.5	932.3	-2,414.2	2,587.9	0.74	-0.42	-3.67	
6,920.0	9.52	292.88	6,356.0	934.5	-2,420.4	2,594.5	1.81	0.18	10.92	

<b>Company:</b>	NOBLE ENERGY INC WELD COUNTY CO	<b>Local Co-ordinate Reference:</b>	Well TOOL F 35-25 - Slot TOOL F35-25
<b>Project:</b>	Sec.35-T5N-R65W	<b>TVD Reference:</b>	WELL @ 4698.0ft (Original Well Elev)
<b>Site:</b>	Tool Pad SEC.35-T5N-R65W	<b>MD Reference:</b>	WELL @ 4698.0ft (Original Well Elev)
<b>Well:</b>	TOOL F 35-25	<b>North Reference:</b>	True
<b>Wellbore:</b>	TOOL F35-25	<b>Survey Calculation Method:</b>	Minimum Curvature
<b>Design:</b>	TOOL F35-25	<b>Database:</b>	Landmark

Survey									
Measured Depth (ft)	Inclination (°)	Azimuth (°)	Vertical Depth (ft)	+N/-S (ft)	+E/-W (ft)	Vertical Section (ft)	Dogleg Rate (°/100ft)	Build Rate (°/100ft)	Turn Rate (°/100ft)
6,960.0	9.78	299.23	6,395.4	937.5	-2,426.4	2,601.2	2.74	0.66	15.87
7,000.0	10.05	303.19	6,434.8	941.1	-2,432.3	2,608.0	1.83	0.67	9.91
7,040.0	10.17	303.70	6,474.2	945.0	-2,438.1	2,614.8	0.39	0.32	1.27
7,080.0	10.30	304.20	6,513.6	949.0	-2,444.0	2,621.8	0.39	0.32	1.24
7,120.0	10.88	301.37	6,552.9	952.9	-2,450.2	2,629.0	1.95	1.45	-7.08
7,160.0	11.48	298.83	6,592.1	956.8	-2,456.9	2,636.6	1.95	1.51	-6.35
7,179.2	11.50	297.78	6,610.9	958.6	-2,460.3	2,640.4	1.09	0.09	-5.47
<b>TOOL F35-25 Target</b>									
7,200.0	11.53	296.64	6,631.3	960.6	-2,464.0	2,644.6	1.09	0.11	-5.45
7,240.0	11.27	294.47	6,670.5	964.0	-2,471.2	2,652.5	1.25	-0.64	-5.42
7,278.6	11.03	292.90	6,708.4	967.0	-2,478.0	2,660.0	1.00	-0.62	-4.09
<b>legal Window 800x800</b>									
7,280.0	11.02	292.84	6,709.8	967.1	-2,478.3	2,660.3	1.00	-0.60	-4.18
7,320.0	10.77	292.63	6,749.1	970.0	-2,485.2	2,667.8	0.65	-0.64	-0.52
7,360.0	10.51	292.41	6,788.4	972.8	-2,492.1	2,675.2	0.65	-0.64	-0.55
7,400.0	10.90	292.02	6,827.7	975.6	-2,498.9	2,682.6	0.99	0.98	-0.99
7,440.0	11.33	291.64	6,866.9	978.5	-2,506.1	2,690.3	1.08	1.06	-0.94
7,480.0	11.57	292.47	6,906.1	981.4	-2,513.5	2,698.3	0.73	0.61	2.08

Checked By: _____	Approved By: _____	Date: _____
-------------------	--------------------	-------------