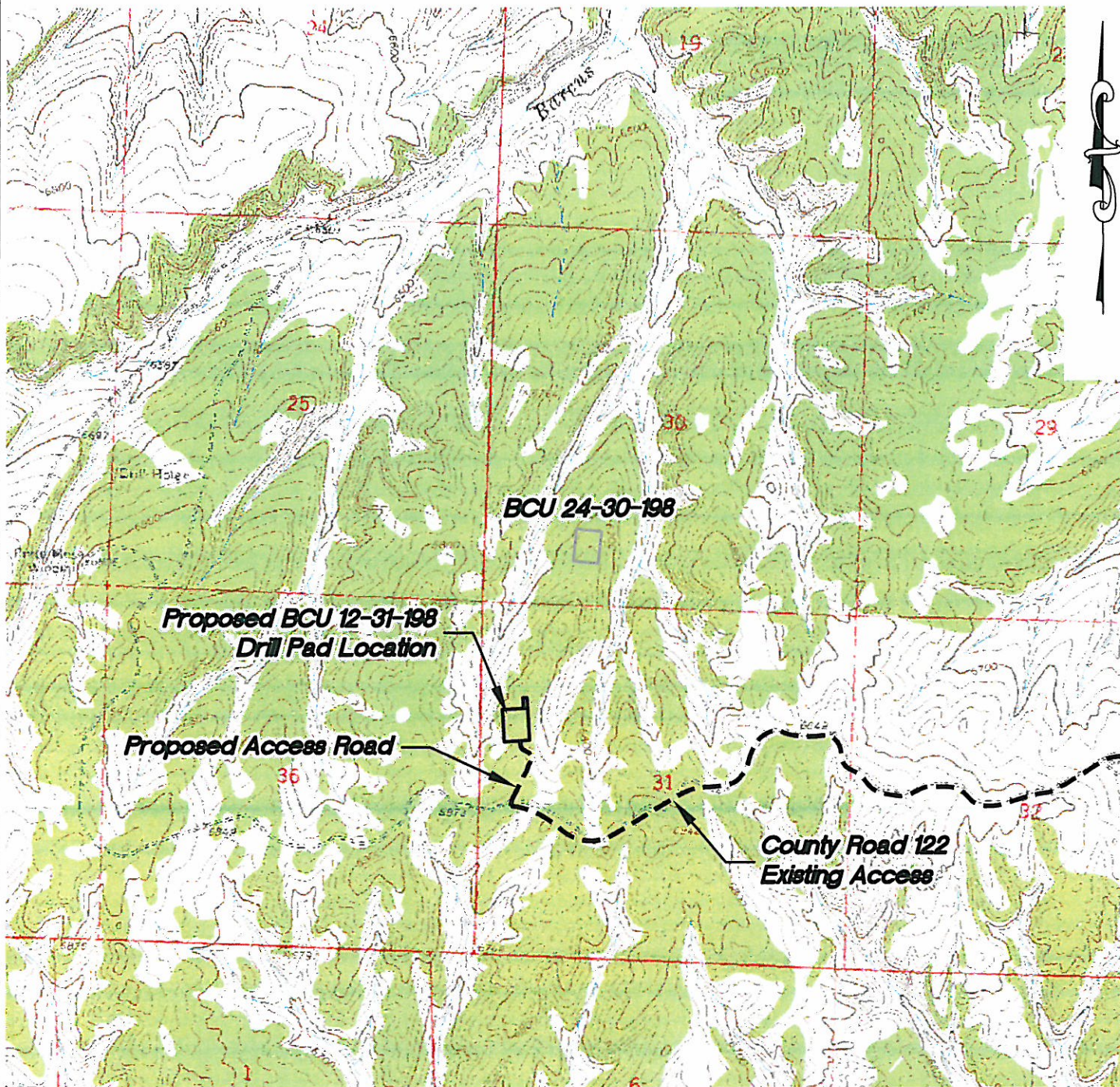


Section 31
T. 1 N., R 98 W



ACCESS DESCRIPTION:

FROM THE INTERSECTION OF STATE HIGHWAY 64 AND RIO BLANCO COUNTY ROAD 5 PROCEED SOUTHERLY ALONG COUNTY ROAD 5 ± 4.6 MILES TO THE INTERSECTION WITH A DIRT/GRAVEL ROAD BEING COUNTY ROAD 20 , PROCEED RIGHT IN A WESTERLY DIRECTION ALONG COUNTY ROAD 20 ± 4.9 MILES TO THE INTERSECTION WITH A DIRT/GRAVEL ROAD BEING COUNTY ROAD 122, PROCEED RIGHT IN A WESTERLY TO SOUTHWESTERLY DIRECTION ± 7.1 MILES TO AN INTERSECTION WITH A DIRT/GRAVEL ROAD, PROCEED RIGHT IN A NORTHERLY DIRECTION ± 0.2 MILES TO THE BCU 12-31-198 DRILL PAD LOCATION, AS SHOWN HEREON.

136 East Third Street
Rifle, Colorado 81650
Ph. (970) 625-2720
Fax (970) 625-2773



BOOKCLIFF
Survey Services, Inc.

SCALE: 1" = 2000'
DATE: 11/18/10
PLAT: 5 of 9
PROJECT: Williams Highlands
DFT: cws

Construction Plan Prepared for:
Williams Williams Production, RMT

BCU 12-31-198 Drill Pad - Plat 5

TOPO & ACCESS ROAD MAP