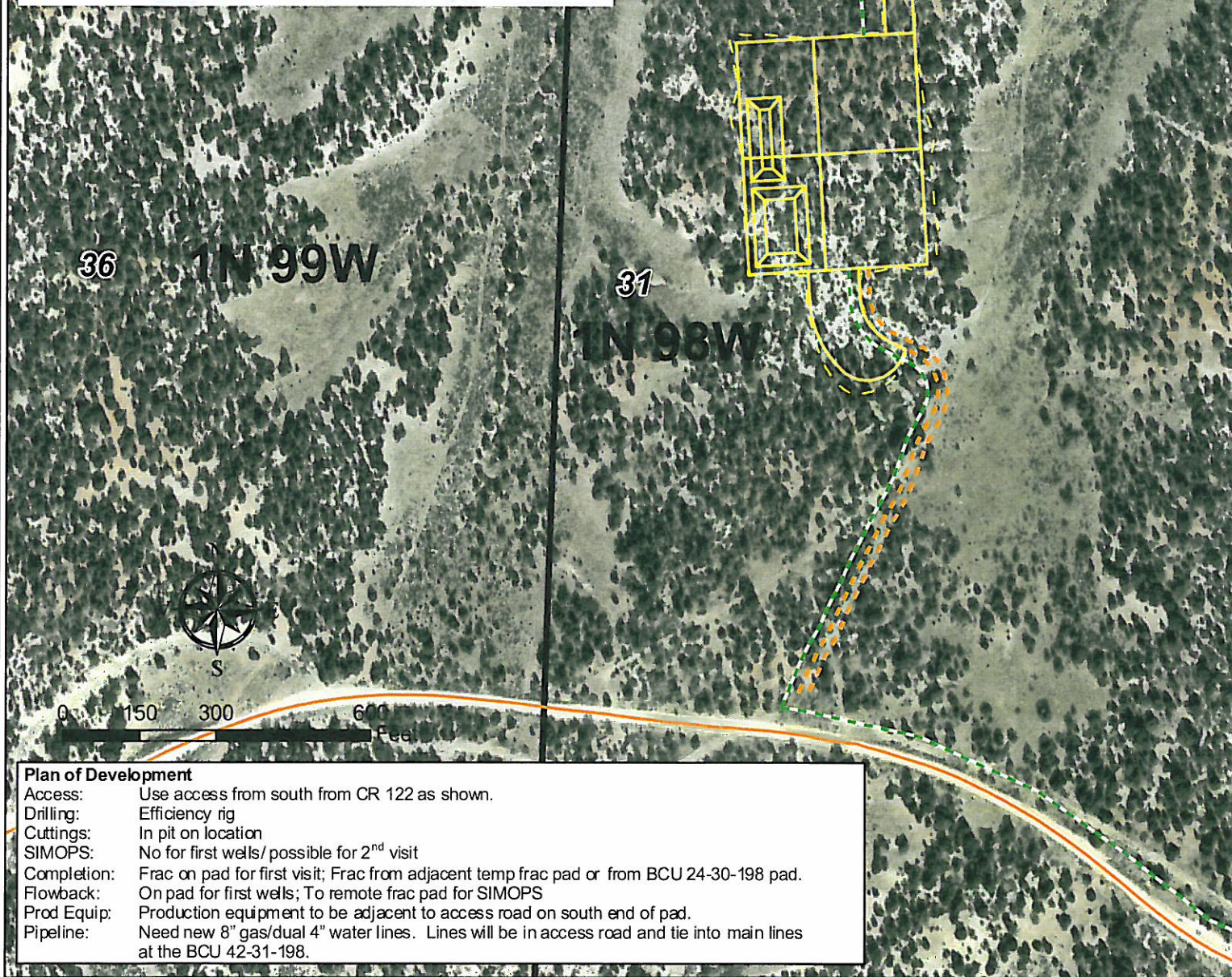


Geologist Information

General: New location, drill 2 wells first (15 wells planned)
 Ownership: FED surface/ FED minerals
 SUA Status: N/A
 Spacing Units: All BHs in Barcus Creek Unit
 Adjacent Owners: BLM



Plan of Development

Access: Use access from south from CR 122 as shown.
 Drilling: Efficiency rig
 Cuttings: In pit on location
 SIMOPS: No for first wells/ possible for 2nd visit
 Completion: Frac on pad for first visit; Frac from adjacent temp frac pad or from BCU 24-30-198 pad.
 Flowback: On pad for first wells; To remote frac pad for SIMOPS
 Prod Equip: Production equipment to be adjacent to access road on south end of pad.
 Pipeline: Need new 8" gas/dual 4" water lines. Lines will be in access road and tie into main lines at the BCU 42-31-198.

Legend

--- Proposed Pipeline --- Proposed Road
 --- Existing Pipeline --- Proposed Daylight Line
 Existing Pad Proposed Pad or Pit
 --- Existing Road

Williams Production RMT

BCU 12-31-198 Plan of Development

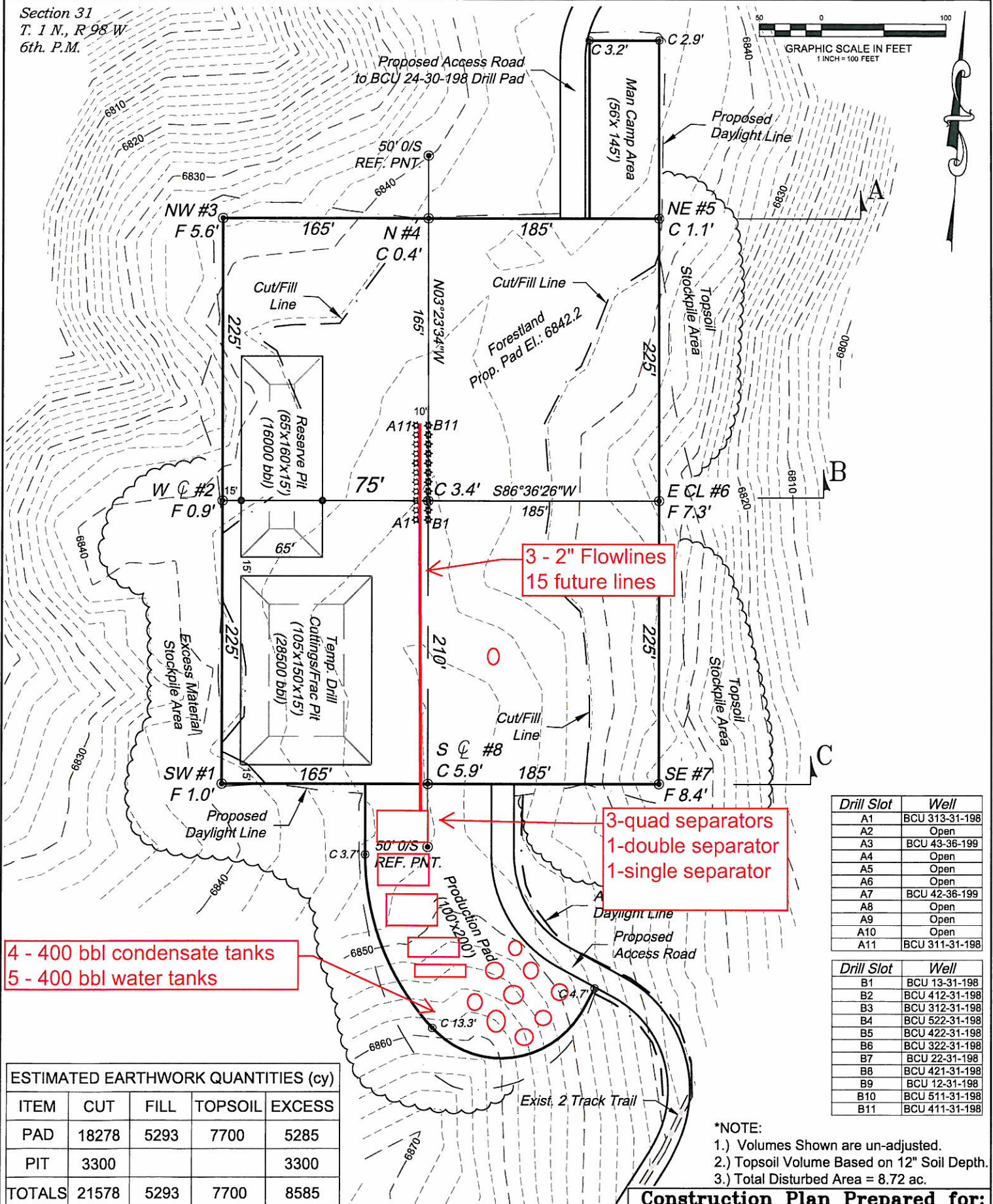
Date Prepared: December 3, 2010



Section 31
T. 1 N., R. 98 W.
6th. P.M.

Proposed Access Road
to BCU 24-30-198 Drill Pad

GRAPHIC SCALE IN FEET
1 INCH = 100 FEET



Drill Slot	Well
A1	BCU 313-31-198
A2	Open
A3	BCU 43-36-199
A4	Open
A5	Open
A6	Open
A7	BCU 42-36-199
A8	Open
A9	Open
A10	Open
A11	BCU 311-31-198

Drill Slot	Well
B1	BCU 13-31-198
B2	BCU 412-31-198
B3	BCU 312-31-198
B4	BCU 522-31-198
B5	BCU 422-31-198
B6	BCU 322-31-198
B7	BCU 22-31-198
B8	BCU 421-31-198
B9	BCU 12-31-198
B10	BCU 511-31-198
B11	BCU 411-31-198

*NOTE:
1.) Volumes Shown are un-adjusted.
2.) Topsoil Volume Based on 12" Soil Depth.
3.) Total Disturbed Area = 8.72 ac.

Construction Plan Prepared for:
Williams. Williams Production, RMT

BCU 12-31-198 - Sheet 1

Production Equipment Detail

ESTIMATED EARTHWORK QUANTITIES (cy)				
ITEM	CUT	FILL	TOPSOIL	EXCESS
PAD	18278	5293	7700	5285
PIT	3300			3300
TOTALS	21578	5293	7700	8585

SCALE: 1" = 100'
DATE: 11/2/10
Drawing: 1 of 1
PROJECT: Williams Highlands
DFT: cws

136 East Third Street
Rifle, Colorado 81650
Ph. (970) 625-1330
Fax (970) 625-2773

BOOKCLIFF
Survey Services, Inc.