

Steil Surveying Services, LLC

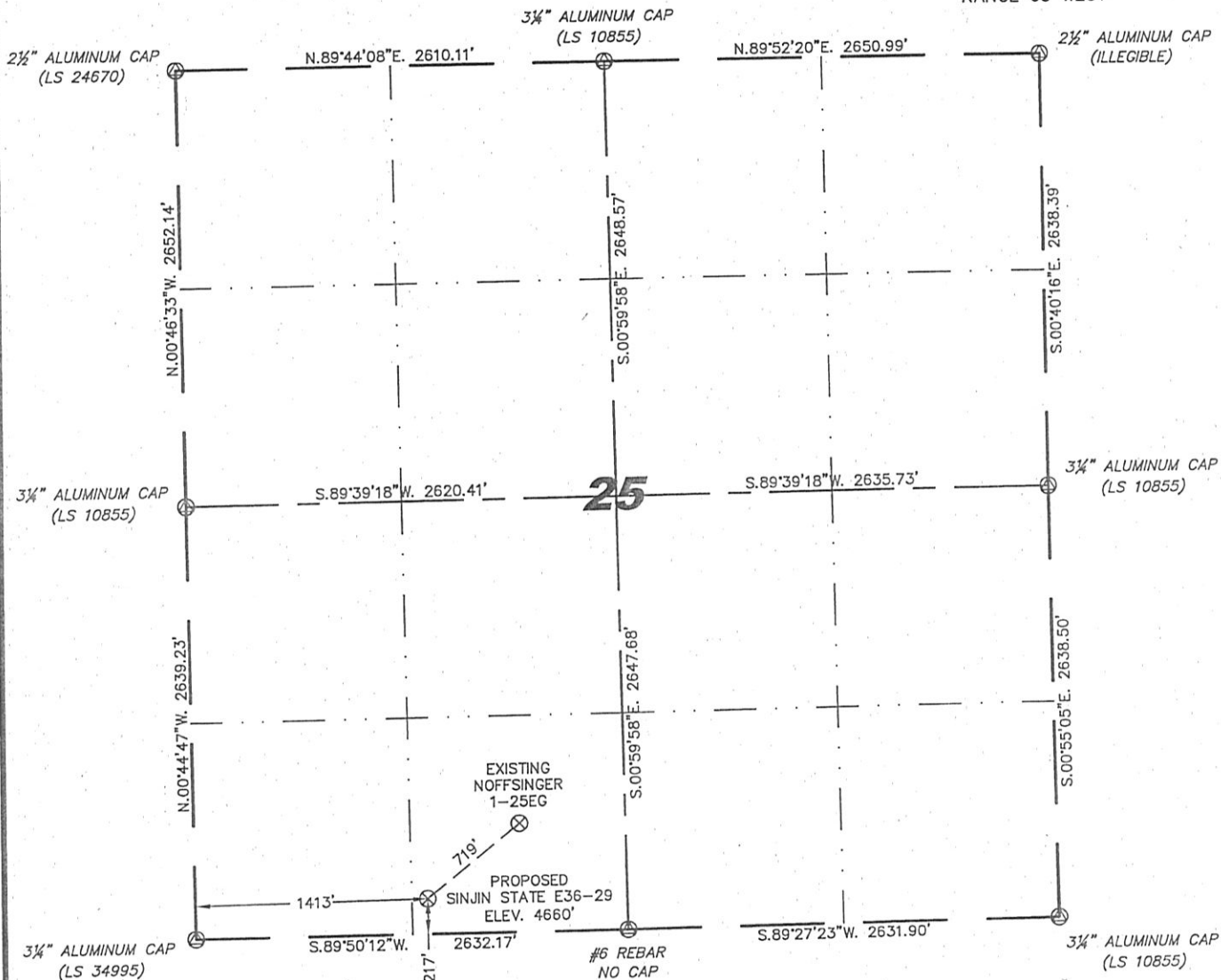
1102 West 19th Street P.O. BOX 2073

Cheyenne, Wyoming 82009

WELL LOCATION CERTIFICATE

THIS MAP DOES NOT REPRESENT A BOUNDARY SURVEY

SECTION 25
TOWNSHIP 6 NORTH
RANGE 65 WEST



0 1000
Scale: 1" = 1000'

IN ACCORDANCE WITH A REQUEST FROM JOE MARTIN - NOBLE ENERGY INC., STEIL SURVEYING SERVICES, LLC HAS DETERMINED THE LOCATION OF THE SINJIN STATE E36-29 WELL TO BE 217' FSL, 1413' FWL, AS MEASURED AT NINETY (90) DEGREES FROM THE SECTION LINES, SECTION 25, TOWNSHIP 6 NORTH, RANGE 65 WEST, 6TH PRINCIPLE MERIDIAN, WELD COUNTY, COLORADO.

I HEREBY CERTIFY THAT THIS WELL LOCATION CERTIFICATE WAS PREPARED BY ME, OR UNDER MY DIRECT SUPERVISION, THAT THE FIELD WORK WAS COMPLETED ON 04/20/2010, FOR AND ON BEHALF OF NOBLE ENERGY INC., THAT IT IS NOT A LAND SURVEY PLAT OR AN IMPROVEMENT SURVEY PLAT, AND THAT IT IS NOT TO BE RELIED UPON FOR ESTABLISHMENT OF FENCE, BUILDING, OR OTHER FUTURE IMPROVEMENT LINES.

NOTES:

- 1) BASIS OF BEARINGS FOR THIS MAP ARE BASED UPON GPS OBSERVATIONS MADE ON 04/20/2010 BETWEEN MONUMENTS LOCATED AT THE SOUTHEAST SECTION CORNER AND THE NORTHEAST SECTION CORNER OF SAID SECTION AND WITH ALL BEARINGS SHOWN HEREON RELATIVE THERETO.
- 2) ELEVATIONS ARE BASED UPON NGS OPUS SOLUTION NAVD 88 DATUM.
- 3) THE NEAREST EXISTING WELL IS: NOFFSINGER 1-25EG, 719' NORTHEAST.
- 4) SEE VISIBLE IMPROVEMENTS EXHIBIT FOR ALL IMPROVEMENTS WITHIN 600'.
- 5) THE LOCATION FALLS IN CROP LAND.

LATITUDE & LONGITUDE (NAD 83 SURFACE HOLE):

LATITUDE: N 40.45026°
LONGITUDE: W 104.61566°
PDOP: 2.4
QUARTER-QUARTER: SE/4SW/4
NEAREST PROPERTY LINE: 217' SOUTH

LEGEND

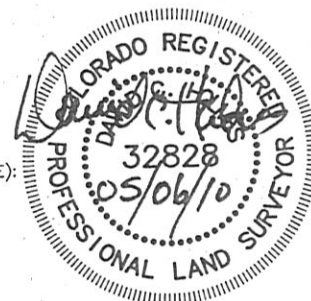
- (A) FOUND SURVEY MONUMENT PER MONUMENT RECORD - EXCEPTIONS NOTED.
- (C) CALCULATED DIMENSION

NOTICE: According to Colorado law you MUST commence any legal action based upon any defect in this W.L.C. within three years after you first discover such defect. In no event may any action based upon any defect in this W.L.C. be commenced more than ten years from this sold date of the certification shown hereon.

David C. Holmes
Professional Land Surveyor Registration No. 32828
State of Colorado

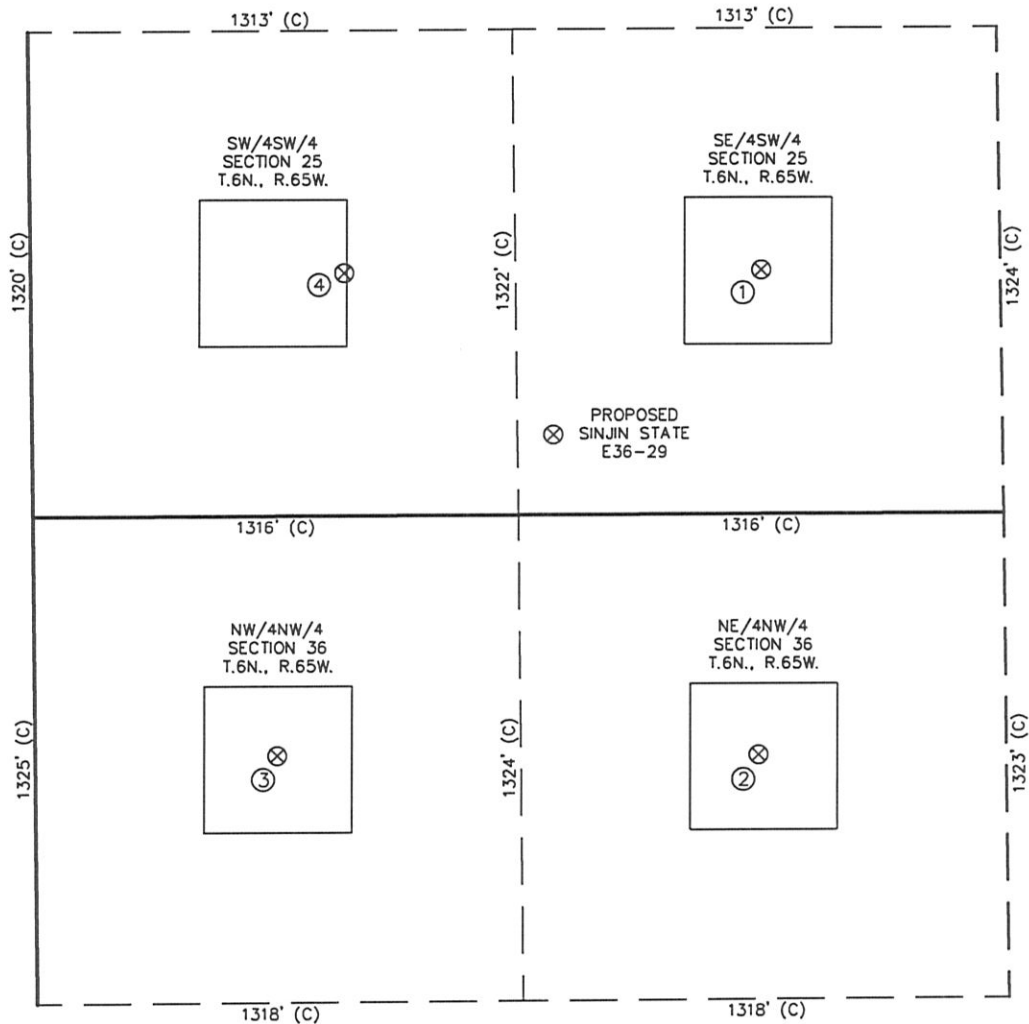
JOB #: 10086

Completed 04/29/2010



SKETCH - SINJIN STATE E36-29

SECTION 25
TOWNSHIP 6 NORTH
RANGE 65 WEST



①	②	③	④
NOFFSINGER 1-25EG SE/SW SEC. 25 664' FSL 1981' FWL EL 4655' N 40.45147 W 104.61363 PDOP 1.9	SINJIN E36-3 NE/NW SEC. 36 657' FNL 1961' FWL EL 4651' N 40.44785 W 104.61369 PDOP 2.2	SINJIN E36-4 NW/NW SEC. 36 653' FNL 657' FWL EL 4662' N 40.44788 W 104.61838 PDOP 2.7	NOFFSINGER E25-13 SW/SW SEC. 25 661' FSL 851' FWL EL 4669' N 40.45149 W 104.61769 PDOP 2.9

NOTES:

- THIS SKETCH DOES NOT REPRESENT A BOUNDARY SURVEY.
- THE DATUM FOR THE LATITUDES AND LONGITUDES ON THIS SKETCH IS NAD83.

