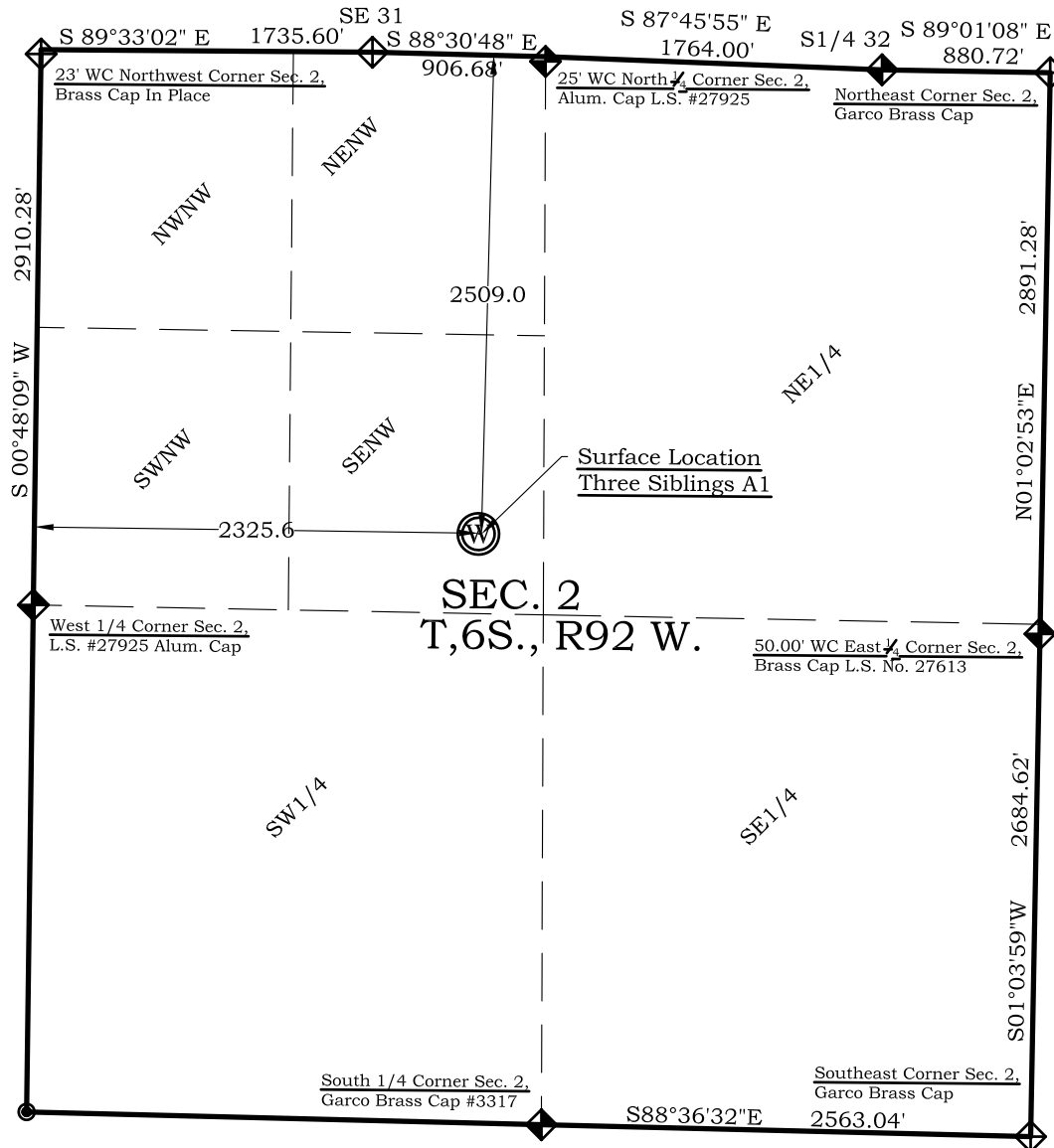


As Drilled Location Plat Three Siblings A1

Section 2, Township 6 South, Range 92 West



Graphic Scale in Feet
1"=1000'

Legend

- Field Surveyed Section Corner
- Field Surveyed Quarter Corner
- Calculated Section Corner Location
- Field Surveyed 1/6 Corner

Three Siblings A1 As Drilled Surface Location

2509' FNL
2325' FWL
Gnd El= 5753.7
NAD83
Lat: 39.557214863°N
Long: 107.635965726°W
NAD27
Lat: 39.557234283°N
Long: 107.635351235°W
UTM 13 NORTH
NAD 1983
Northing
14376392.521
Easting
897415.991

Prepared For Antero Resources

As Drilled Three Siblings A1 Well Situate in The SE 1/4 NW 1/4
Section 2, Township 6 South, Range 92 West of the 6 th.
Principal Meridian, County of Garfield, State of Colorado

SURVEYOR'S CERTIFICATE

I, SCOTT E. AIBNER, A REGISTERED LAND SURVEYOR, LICENSED UNDER THE LAWS OF THE STATE OF COLORADO DO HEREBY CERTIFY THAT THE SURVEY SHOWN HEREON WAS PREPARED BY RIVER VALLEY SURVEY, INC., FOR ANTERO RESOURCES, BY ME OR UNDER MY DIRECT SUPERVISION AND THAT THIS PLAT IS A TRUE REPRESENTATION THEREOF.

31143
SCOTT E. AIBNER
PROFESSIONAL LAND SURVEYOR

BY: SCOTT E. AIBNER, COLORADO REG. NO. 31143

Notes:

- LATITUDE AND LONGITUDE COORDINATES ARE DIFFERENTIALLY CORRECTED AND BASED ON PUBLISHED NGS CONTROL STATION "WDP-5". SYSTEM: UTM ZONE: 13 NORTH DATUM: NAD 1983 (CONUS)
- ELEVATIONS ARE BASED ON NAVD OF 1983.
- ALL BOTTOM AND TOP HOLE LOCATIONS ARE MEASURED 90 DEGREES FROM SECTION LINE.
- USGS QUADRANGLE MAP "SILT".
- CURRENT SURFACE LAND USE: HAY FIELD.
- PDOP AT THE TIME OF LOCATION OF SURFACE WELL = 2.4



River Valley Survey, Inc.
110 East 3rd. Street, Suite 213
Rifle, Colorado 81650
Ph: 970-379-7846

Project: Three Siblings A Pad

Field Date: 11-19-10

Date: 11-22-10

Scale: 1"= 1000'

Sheet: 1 of 1

As Drilled Location Plat
Prepared For Antero Resources

Situate In:
SW 1/4 Section 2, T6S., R. 92 W. of the
6th P.M., Garfield County, Colorado

