

---

# **XTO ENERGY INC EBUSINESS**

---

**Henry #2-3**

**La Plata County , Colorado**

**Cement Production Casing**

**10-Nov-2010**

**Job Site Documents**

## The Road to Excellence Starts with Safety

Sold To #: 353810	Ship To #: 2817868	Quote #:	Sales Order #: 7765293
Customer: XTO ENERGY INC EBUSINESS	Customer Rep: Niederhofer, Justin		
Well Name: Henry	Well #: #2-3	API/UWI #:	
Field:	City (SAP): IGNACIO	County/Parish: La Plata	State: Colorado
Legal Description: Section 10 Township 30N Range 13W			
Contractor: AWS	Rig/Platform Name/Num: AWS 507		
Job Purpose: Cement Production Casing			
Well Type: Development Well	Job Type: Cement Production Casing		
Sales Person: MASON, KYLE	Srv Supervisor: PONDER, THOMAS	MBU ID Emp #:	427112

## Job Personnel

HES Emp Name	Exp Hrs	Emp #	HES Emp Name	Exp Hrs	Emp #	HES Emp Name	Exp Hrs	Emp #
ETCITY, JERRY	5	227876	GONZALES, MATTHEW Lee	5	479805	PONDER, THOMAS Lynn	5	427112

## Equipment

HES Unit #	Distance-1 way	HES Unit #	Distance-1 way	HES Unit #	Distance-1 way	HES Unit #	Distance-1 way

## Job Hours

Date	On Location Hours	Operating Hours	Date	On Location Hours	Operating Hours	Date	On Location Hours	Operating Hours
11/10/2010	5	2						

TOTAL	Total is the sum of each column separately							
-------	--	--	--	--	--	--	--	--

## Job

Formation Name	Top	Bottom	Called Out	Date	Time	Time Zone
Formation Depth (MD)			On Location	10 - Nov - 2010	18:00	MST
Form Type		BHST	Job Started	10 - Nov - 2010	20:26	MST
Job depth MD	2903. ft	Job Depth TVD	Job Completed	10 - Nov - 2010	21:28	MST
Water Depth		Wk Ht Above Floor	Departed Loc	10 - Nov - 2010	23:00	MST
Perforation Depth (MD)	From	To				

## Well Data

Description	New / Used	Max pressure psig	Size in	ID in	Weight lbm/ft	Thread	Grade	Top MD ft	Bottom MD ft	Top TVD ft	Bottom TVD ft
7 7/8" Open Hole				7.875				225.	2900.		
5 1/2" Production Casing	Unknown		5.5	4.95	15.5		J-55	.	2900.		
8 5/8" Surface Casing	Unknown		8.625	8.097	24.		J-55	.	225.		

Sales/Rental/3<sup>rd</sup> Party (HES)

Description	Qty	Qty uom	Depth	Supplier
PLUG,CMTG,TOP,5 1/2,HWE,4.38 MIN/5.09 MA	1	EA		
SUGAR, GRANULATED, IMPERIAL	1	LB		

## Tools and Accessories

Type	Size	Qty	Make	Depth	Type	Size	Qty	Make	Depth	Type	Size	Qty	Make
Guide Shoe					Packer					Top Plug	5 1/2	1	HES
Float Shoe					Bridge Plug					Bottom Plug			
Float Collar					Retainer					SSR plug set			
Insert Float										Plug Container	5 1/2	1	HES
Stage Tool										Centralizers			

## Miscellaneous Materials

Gelling Agt	Conc	Surfactant	Conc	Acid Type	Qty	Conc	%
Treatment Fld	Conc	Inhibitor	Conc	Sand Type	Size	Qty	

## Fluid Data

Stage/Plug #: 1

Fluid #	Stage Type	Fluid Name	Qty	Qty uom	Mixing Density lbm/gal	Yield ft <sup>3</sup> /sk	Mix Fluid Gal/sk	Rate bbl/min	Total Mix Fluid Gal/sk
1	Spacer		10.00	bbl	8.33	.0	.0	.0	
2	MUD FLUSH	MUD FLUSH - ZI - SBM (13383)	10.00	bbl	8.4	.0	.0	.0	
3	Spacer		5.00	bbl	8.33	.0	.0	.0	
4	LEAD CEMENT	PRB-2 - SBM (321500)	222.0	sacks	12.3	2.36	12.95		12.95
	5 lbm	GILSONITE, BULK (100003700)							
	0.125 lbm	POLY-E-FLAKE (101216940)							
	0.3 %	FE-2 (100001615)							
	0.3 %	D-AIR 3000 (101007446)							
	12.95 Gal	FRESH WATER							
5	Tail Cement	PRB-2 - SBM (321500)	116.0	sacks	13.5	1.81	8.85		8.85
	5 lbm	GILSONITE, BULK (100003700)							
	0.125 lbm	POLY-E-FLAKE (101216940)							
	0.3 %	FE-2 (100001615)							
	0.3 %	D-AIR 3000 (101007446)							
	8.85 Gal	FRESH WATER							
6	Displacement		67.00	bbl	8.4			6.0	
<b>Calculated Values</b>		<b>Pressures</b>		<b>Volumes</b>					
Displacement	66.3	Shut In: Instant		Lost Returns		Cement Slurry	130.7	Pad	
Top Of Cement	UNKNOWN	5 Min		Cement Returns	0	Actual Displacement	66.3	Treatment	
Frac Gradient		15 Min		Spacers	25	Load and Breakdown		Total Job	215
<b>Rates</b>									
Circulating		Mixing	6	Displacement	6	Avg. Job			6
Cement Left In Pipe	Amount	45.5 ft	Reason	Shoe Joint					
Frac Ring # 1 @	ID	Frac ring # 2 @	ID	Frac Ring # 3 @	ID	Frac Ring # 4 @	ID		
The Information Stated Herein Is Correct				Customer Representative Signature					

*The Road to Excellence Starts with Safety*

<b>Sold To #:</b> 353810	<b>Ship To #:</b> 2817868	<b>Quote #:</b>	<b>Sales Order #:</b> 7765293
<b>Customer:</b> XTO ENERGY INC EBUSINESS		<b>Customer Rep:</b> Niederhofer, Justin	
<b>Well Name:</b> Henry		<b>Well #:</b> #2-3	<b>API/UWI #:</b>
<b>Field:</b>	<b>City (SAP):</b> IGNACIO	<b>County/Parish:</b> La Plata	<b>State:</b> Colorado
<b>Legal Description:</b> Section 10 Township 30N Range 13W			
<b>Lat:</b>		<b>Long:</b>	
<b>Contractor:</b> AWS		<b>Rig/Platform Name/Num:</b> AWS 507	
<b>Job Purpose:</b> Cement Production Casing			<b>Ticket Amount:</b>
<b>Well Type:</b> Development Well		<b>Job Type:</b> Cement Production Casing	
<b>Sales Person:</b> MASON, KYLE		<b>Srv Supervisor:</b> PONDER, THOMAS	<b>MBU ID Emp #:</b> 427112

Activity Description	Date/Time	Cht #	Rate bbl/min	Volume bbl		Pressure psig		Comments
				Stage	Total	Tubing	Casing	
Call Out	11/10/2010 15:00							
Crew Leave Yard	11/10/2010 16:00							ALL HES PRESENT FOR PRE-CONVOY SAFETY HUDDLE
Arrive At Loc	11/10/2010 18:00							RIG WAS CIRCULATING ON BOTTOM WHEN CREW ARRIVED ON LOCATION
Assessment Of Location Safety Meeting	11/10/2010 18:30							TD- 2913', TP- 2903', SJ- 45.45', MUD- 10.0 PPG, HOLE- 7 7/8", SURFACE CASING- 8 5/8" 24# J-55 SET @ 318', PRODUCTION CASING- 5 1/2" 17# J-55
Rig-Up Equipment	11/10/2010 19:00							RIG STARTED CIRCULATING ON BOTTOM @ 1730
Safety Meeting	11/10/2010 20:00							ALL HES PRESENT, RIG CREW PRESENT, RIG STARTED CIRCULATING ON BOTTOM @ 1930
Start Job	11/10/2010 20:26		2	2			231.0	FILL LINES
Activity Description	Date/Time	Cht #	Rate bbl/min	Volume bbl		Pressure psig		Comments
				Stage	Total	Tubing	Casing	

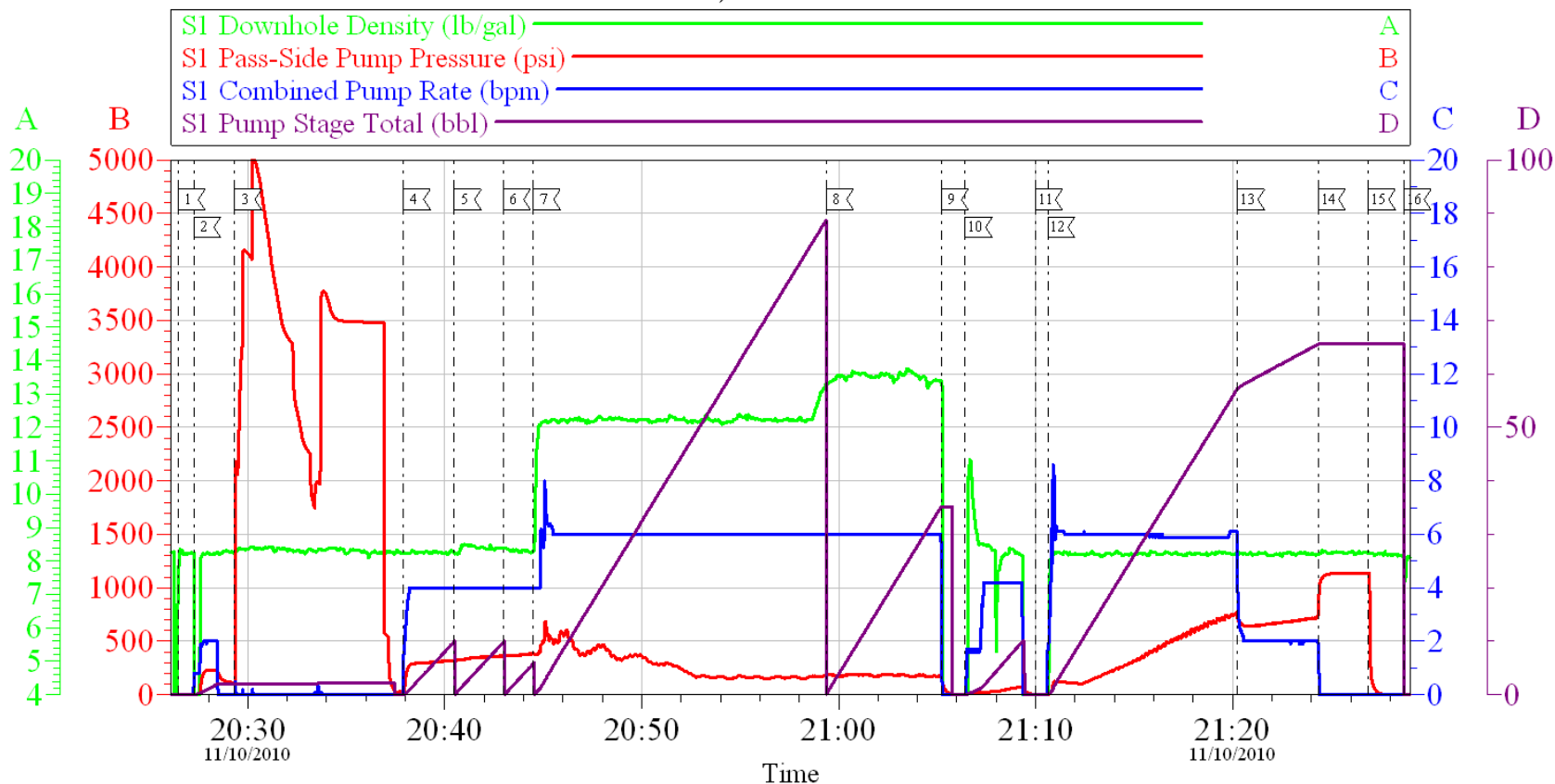
Test Lines	11/10/2010 20:29		0.5	0.5			5128.0	HAD TROUBLES GETTING A PRESSURE TEST TO HOLD, THERE WERE NO LEAKS ON ANY OF THE WING CONNECTIONS, ALSO CLOSING THE DOWN HOLE DID NOTHING TO STOP THE PRESSURE DROP, EVENTUALLY THE PRESSURE LINED OUT ON ITS OWN
Pump Spacer 1	11/10/2010 20:37		4	10			323.0	FRESH WATER
Pump Spacer 2	11/10/2010 20:40		4	10			363.0	MUDFLUSH, 84# MF-1, 4.2 GAL MORFLO(R) III
Pump Spacer 1	11/10/2010 20:42		6	5			383.0	FRESH WATER
Pump Lead Cement	11/10/2010 20:44		6	93.3			685.0	222 SKS 12.3 PPG 2.36 FT3/SK 12.95 GAL/SK
Pump Tail Cement	11/10/2010 20:59		6	37.4			193.0	116 SKS 13.5 PPG 1.81 FT3/SK 8.85 GAL/SK
Shutdown	11/10/2010 21:05							
Clean Lines	11/10/2010 21:06							
Drop Plug	11/10/2010 21:09							PLUG DROP VERIFIED VIA TATTLE TELL WITH POSITIVE DISPLACEMENT PLUG CONTAINER
Pump Displacement	11/10/2010 21:10		6	66.3			771.0	FRESH WATER
Slow Rate	11/10/2010 21:20		2	56.3			610.0	DID NOT GET FULL CEMENT RETURNS AT THE END OF THE JOB, RETURNS WERE GOOD THE ENTIRE JOB, STILL HAD SOME MUDFLUSH COMING OUT OF THE WELL WHEN THE PLUG BUMPED
Bump Plug	11/10/2010 21:24		2	66.3			720.0	PLUG BUMPED
Check Floats	11/10/2010 21:26						1137.0	FLOATS HELD, 1 BBL BACK TO THE DISPLACEMENT TANKS

***Cementing Job Log***

Activity Description	Date/Time	Cht #	Rate bbl/ min	Volume bbl		Pressure psig		Comments
				Stage	Total	Tubing	Casing	
End Job	11/10/2010 21:28							THANK YOU FOR CHOOSING HALLIBURTON, THOMAS PONDER AND CREW

# XTO

## HENRY #2-3, 5 1/2" PRODUCTION



Local Event Log			
Maximum	SPPP	Maximum	SPPP
1 START JOB	20:26:27 0.000	2 FILL LINES	20:27:15 231.0
4 PUMP H2O SPACER	20:37:54 323.0	5 PUMP MUDFLUSH	20:40:29 363.0
7 PUMP LEAD CEMENT	20:44:30 685.0	8 PUMP TAIL CEMENT	20:59:23 193.0
10 CLEAN LINES	21:06:26 66.00	11 DROP PLUG	21:09:59 4.000
13 SLOW RATE	21:20:15 811.8	14 BUMP PLUG	21:24:21 1137
16 END JOB	21:28:43 405.0	3 TEST LINES	20:29:20 5128
		6 PUMP H2O SPACER	20:42:59 383.0
		9 SHUTDOWN	21:05:12 166.0
		12 PUMP H2O DISPLACEMENT	21:10:37 771.0
		15 CHECK FLOATS	21:26:54 1137

Customer: XTO	Job Date: 10-Nov-2010	Sales Order #: 7765293
Well Description: HENRY #2-3	Job Type: PRODUCTION	ADC Used: YES
Company Rep: MAR NIETZEL	Cement Supervisor: THOMAS PONDER	Elite#/Operator: ELITE #8 / THOMAS PONDER

OptiCem v6.4.9  
10-Nov-10 22:03