

---

# **XTO ENERGY INC EBUSINESS**

---

**Henry #2-3**

**La Plata County , Colorado**

**Cement Surface Casing**

**07-Nov-2010**

**Job Site Documents**



## Cementing Job Summary

## *The Road to Excellence Starts with Safety*

<b>Sold To #:</b> 353810	<b>Ship To #:</b> 2817868	<b>Quote #:</b>	<b>Sales Order #:</b> 7756450
<b>Customer:</b> XTO ENERGY INC EBUSINESS		<b>Customer Rep:</b> Niederhofer, Justin	
<b>Well Name:</b> Henry		<b>Well #:</b> #2-3	<b>API/UWI #:</b>
<b>Field:</b>	<b>City (SAP):</b> IGNACIO	<b>County/Parish:</b> La Plata	<b>State:</b> Colorado
<b>Legal Description:</b> Section 10 Township 30N Range 13W			
<b>Contractor:</b> AZTEC WELL SERVICE		<b>Rig/Platform Name/Num:</b> AWS 507	
<b>Job Purpose:</b> Cement Surface Casing			
<b>Well Type:</b> Development Well		<b>Job Type:</b> Cement Surface Casing	
<b>Sales Person:</b> MASON, KYLE		<b>Srvs Supervisor:</b> WOOD, BRANDON	<b>MBU ID Emp #:</b> 412753

## Job Personnel

HES Emp Name	Exp Hrs	Emp #	HES Emp Name	Exp Hrs	Emp #	HES Emp Name	Exp Hrs	Emp #
DOBBS, CHAD A	3	275043	JONES, DAVID Michael	3	409749	WOOD, BRANDON M	3	412753

## Equipment

HES Unit #	Distance-1 way	HES Unit #	Distance-1 way	HES Unit #	Distance-1 way	HES Unit #	Distance-1 way
10001398C	60 mile	10829466	60 mile	11223557	60 mile	11338219	60 mile

## Job Hours

[illegible]

<b>TOTAL</b>	Total is the sum of each column separately				
--------------	--	--	--	--	--

## Job

### Job Times

Formation Name								Date	Time	Time Zone
Formation Depth (MD)	Top			Bottom			Called Out	07 - Nov - 2010	04:00	MST
Form Type				BHST			On Location	07 - Nov - 2010	07:30	MST
Job depth MD	318. ft			Job Depth TVD	271. ft		Job Started	07 - Nov - 2010	08:48	MST
Water Depth				Wk Ht Above Floor	4. ft		Job Completed	07 - Nov - 2010	09:21	MST
Perforation Depth (MD)	From			To			Departed Loc	07 - Nov - 2010	10:30	MST

## Well Data

Description	New / Used	Max pressure psig	Size in	ID in	Weight lbm/ft	Well Data					
						Thread	Grade	Top MD ft	Bottom MD ft	Top TVD ft	Bottom TVD ft
12 1/4" Open Hole				12.25				.	300.		
8 5/8" Surface Casing	Unknown		8.625	8.097	24.		J-55	.	300.		

**Sales/Rental/3<sup>rd</sup> Party (HES)**

Description	Qty	Qty uom	Depth	Supplier
PLUG,CMTG,TOP,8 5/8,HWE,7.20 MIN/8.09 MA	1	EA		
SUGAR, GRANULATED, IMPERIAL	100	LB		

## Tools and Accessories

Type	Size	Qty	Make	Depth	Type	Size	Qty	Make	Depth	Type	Size	Qty	Make
Guide Shoe					Packer					Top Plug			
Float Shoe					Bridge Plug					Bottom Plug			
Float Collar					Retainer					SSR plug set			
Insert Float										Plug Container			
Stage Tool										Centralizers			

## Miscellaneous Materials

Gelling Agt	Conc	Surfactant	Conc	Acid Type	Qty	Conc	%
Treatment Fld	Conc	Inhibitor	Conc	Sand Type	Size	Qty	

Fluid Data									
Stage/Plug #: 1									
Fluid #	Stage Type	Fluid Name	Qty	Qty uom	Mixing Density lbm/gal	Yield ft <sup>3</sup> /sk	Mix Fluid Gal/sk	Rate bbl/min	Total Mix Fluid Gal/sk
1	Spacer		10.00	bbl	8.33	.0	.0	.0	
2	Primary Cement	CMT - PREMIUM - CLASS G, 94 LB SK (100003685)	215.0	sacks	15.8	1.17	5.01		5.01
	94 lbm	CMT - PREMIUM - CLASS G REG OR TYPE V, BULK (100003685)							
	0.125 lbm	POLY-E-FLAKE (101216940)							
	3 %	CALCIUM CHLORIDE - HI TEST PELLET (100005053)							
	5.013 Gal	FRESH WATER							
3	Displacement		17.20	bbl	8.33	.0	.0	.0	
Calculated Values		Pressures		Volumes					
Displacement	17.2	Shut In: Instant	138	Lost Returns	no	Cement Slurry	44.8	Pad	
Top Of Cement	surface	5 Min		Cement Returns	12	Actual Displacement	17.7	Treatment	
Frac Gradient		15 Min		Spacers	10	Load and Breakdown		Total Job	
Rates									
Circulating	2	Mixing	4	Displacement	4	Avg. Job	3.5		
Cement Left In Pipe	Amount	47.05 ft	Reason	Shoe Joint					
Frac Ring # 1 @	ID		Frac ring # 2 @	ID		Frac Ring # 3 @	ID		Frac Ring # 4 @
The Information Stated Herein Is Correct				Customer Representative Signature					

*The Road to Excellence Starts with Safety*

<b>Sold To #:</b> 353810	<b>Ship To #:</b> 2817868	<b>Quote #:</b>	<b>Sales Order #:</b> 7756450
<b>Customer:</b> XTO ENERGY INC EBUSINESS		<b>Customer Rep:</b> Niederhofer, Justin	
<b>Well Name:</b> Henry		<b>Well #:</b> #2-3	<b>API/UWI #:</b>
<b>Field:</b>	<b>City (SAP):</b> IGNACIO	<b>County/Parish:</b> La Plata	<b>State:</b> Colorado
<b>Legal Description:</b> Section 10 Township 30N Range 13W			
<b>Lat:</b>		<b>Long:</b>	
<b>Contractor:</b> AZTEC WELL SERVICE		<b>Rig/Platform Name/Num:</b> AWS 507	
<b>Job Purpose:</b> Cement Surface Casing			<b>Ticket Amount:</b>
<b>Well Type:</b> Development Well		<b>Job Type:</b> Cement Surface Casing	
<b>Sales Person:</b> MASON, KYLE		<b>Srv Supervisor:</b> WOOD, BRANDON	<b>MBU ID Emp #:</b> 412753

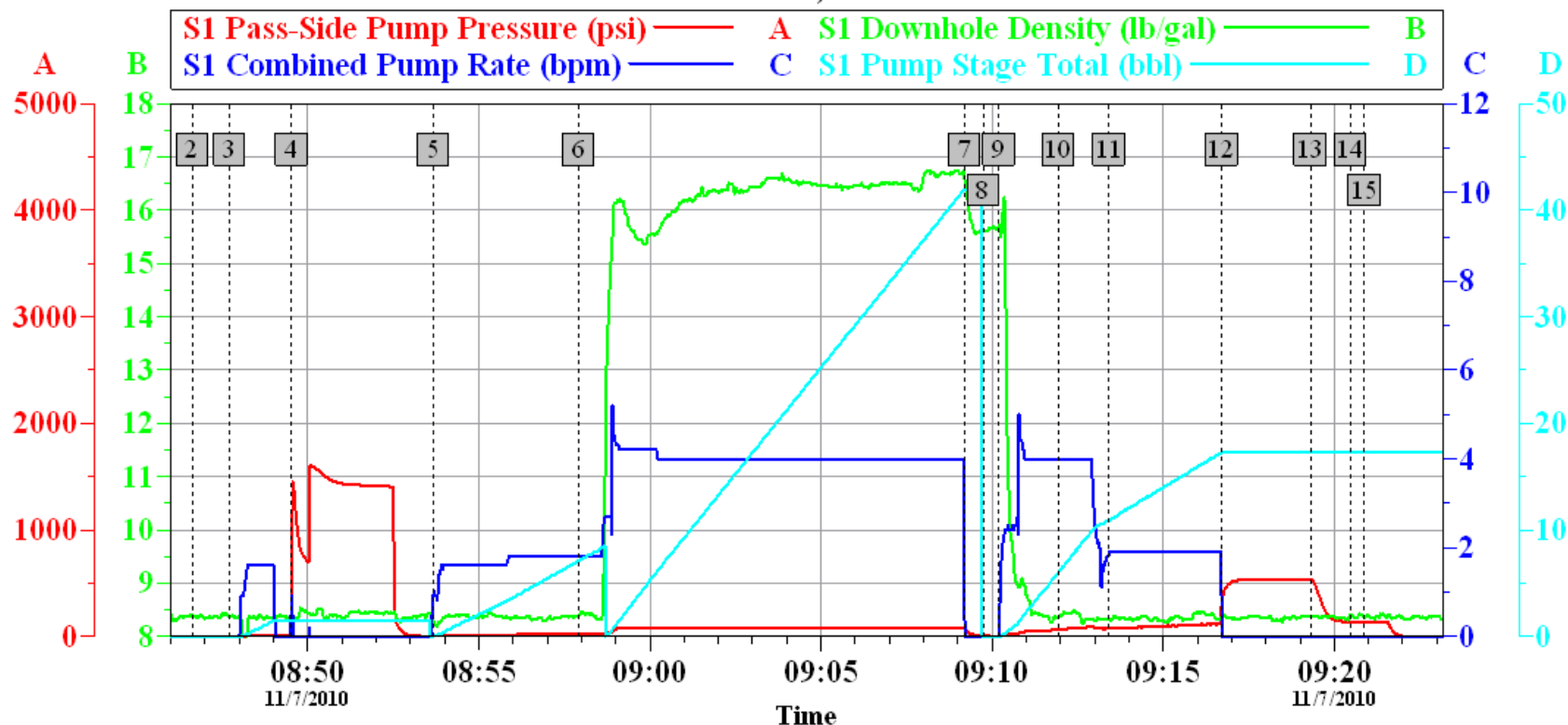
Activity Description	Date/Time	Cht #	Rate bbl/min	Volume bbl		Pressure psig		Comments
				Stage	Total	Tubing	Casing	
Call Out	11/07/2010 04:00							
Depart Yard Safety Meeting	11/07/2010 05:55							SAFETY MEETING INVOLVING THE CMT CREW
Crew Leave Yard	11/07/2010 06:00							
Arrive At Loc	11/07/2010 07:30							1- F-450 10829466, 1- RED TIGER PUMP TRUCK 11223557, 1- 660 BULK TRUCK TRAILERS 10001398
Assessment Of Location Safety Meeting	11/07/2010 07:35							ASSESSMENT OF LOCATION INVOLVING THE CMT CREW
Pre-Rig Up Safety Meeting	11/07/2010 07:45							SAFETY MEETING INVOLVING THE ENTIRE CMT/ RIG CREW
Rig-Up Equipment	11/07/2010 07:50							
Pre-Job Safety Meeting	11/07/2010 08:20							SAFETY MEETING INVOLVING EVERYONE ON LOCATION
Start Job	11/07/2010 08:47							TD 322 FT, 318 TP, 270.95 FC, 47.05 SJ, 8 5/8 24 # J-55 CSG, 12 1/4 OH, CALCULATED 99 PIS TO LIFT PIPE OUT OF HOLE
Test Lines	11/07/2010 08:49		0.5		1.5		1400.0	PRESSURE TEST GOOD TO 1400 PSI
Pump Spacer 1	11/07/2010 08:53		2		10		18.0	PUMP 10 BBL FRESH WATER SPACER

Activity Description	Date/Time	Cht #	Rate bbl/min	Volume bbl		Pressure psig		Comments
				Stage	Total	Tubing	Casing	
Pump Cement	11/07/2010 08:58		4		44.8		80.0	215 SKS, 1.17 YLD, 5.01 GAL H2O/SK, 44.8 BBLs @ 15.8 #, 25.6 BBLs H2O REQ
Shutdown	11/07/2010 09:09							SHUT DOWN TO DROP TOP PLUG
Drop Top Plug	11/07/2010 09:09							TATTLE TAIL INDICATED PLUG LEFT THE PLUG CONTAINER
Pump Displacement	11/07/2010 09:10		4		17.7		20.0	CALCULATED 17.2 BBLs DISPLACEMENT, ACTUALLY PUMPED 17.7 BBLs ON TANKS MARK TO MARK TO BUMP PLUG
Cement Returns to Surface	11/07/2010 09:12				12			CALCULATED SHOULD CIRCULATE 18.4 BBLs CEMENT RETURNS TO SURFACE, ACTUALLY CIRCULATED 12 BBLs
Slow Rate	11/07/2010 09:13		2					SLOW RATE 2 BBL MIN THE LAST 6.5 BBLs OF DISPLACEMENT TO LAND THE PLUG
Bump Plug	11/07/2010 09:17		2				123.0	CALCULATED 105 PSI DIFFERENTIAL WHEN PLUG LANDS, PLUG BUMPED @ 123 PSI
Release Casing Pressure	11/07/2010 09:19						535.0	PRESSURED UP TO 535 PSI, RELEASED PRESSURE TO 135 PSI
Shut In Well	11/07/2010 09:20						135.0	SHUT IN WELL W/ 135 PSI ON IT.
End Job	11/07/2010 09:21							GOOD CIRCULATION THROUGHOUT THE ENTIRE CMT JOB, NO PIPE MOVEMENT,
Pre-Rig Down Safety Meeting	11/07/2010 09:25							SAFETY MEETING INVOLVING THE CMT/RIG CREW
Rig-Down Equipment	11/07/2010 09:30							
Safety Meeting - Departing Location	11/07/2010 10:25							SAFETY MEETING INVOLVING THE CMT CREW

Activity Description	Date/Time	Cht #	Rate bbl/ min	Volume bbl		Pressure psig		Comments
				Stage	Total	Tubing	Casing	
Depart Location for Service Center or Other Site	11/07/2010 10:30							THANK YOU FOR USING HALLIBURTON, BRANDON WOOD AND CREW

# XTO

## HENRY #2-3, SURFACE



### Global Event Log

<b>2</b> Starting Job	08:46:38	<b>3</b> Start Job	08:47:43	<b>4</b> Test Lines	08:49:31
<b>5</b> Pump Spacer	08:53:40	<b>6</b> Pump Cement	08:57:55	<b>7</b> Shutdown	09:09:12
<b>8</b> Drop Plug	09:09:45	<b>9</b> Pump Displacement	09:10:12	<b>10</b> Cement Returns to Surface	09:11:56
<b>11</b> Slow Rate	09:13:25	<b>12</b> Bump Plug	09:16:43	<b>13</b> Release Casing Pressure	09:19:18
<b>14</b> Shut In Well	09:20:28	<b>15</b> End Job	09:20:53		

Customer: XTO  
Well Description: HENRY # 2-3  
Customer Rep: MARK NEITZEL

Job Date: 07-Nov-2010  
Job type: SURFACE  
Service Supervisor: BRANDON WOOD

Sales Order #: 7756450  
ADC Used: YES  
Operator/ Pump: CHAD DOBBS, 11223557

OptiCem v6.3.4  
07-Nov-10 09:35