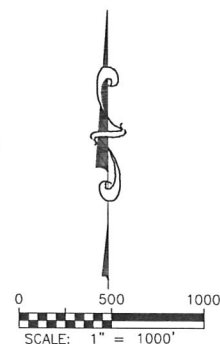
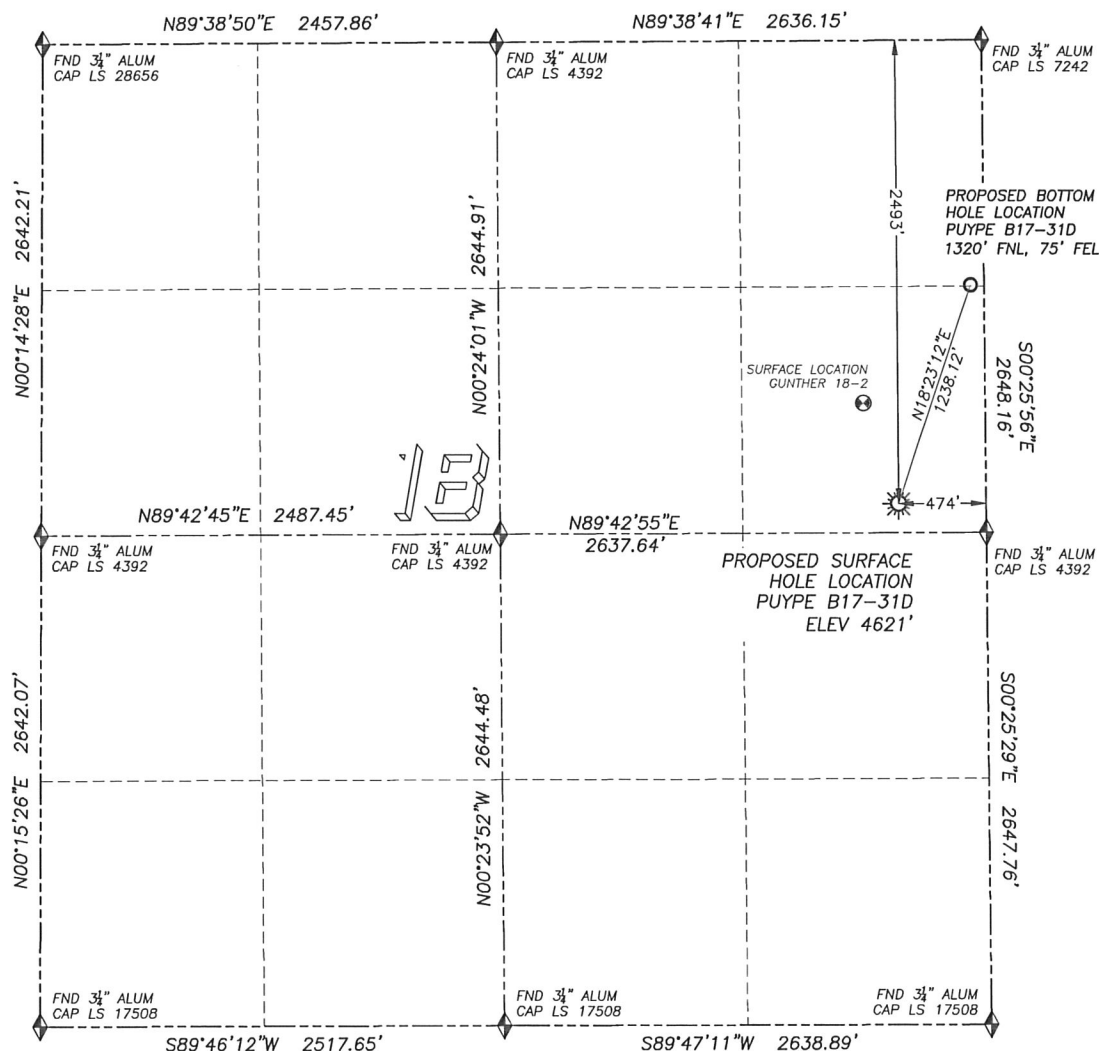


WELL LOCATION CERTIFICATE

PUYPE B17-31D

SECTION 18, TOWNSHIP 5 NORTH, RANGE 64 WEST OF THE 6TH PRINCIPAL MERIDIAN

**LEGEND**

- FOUND MONUMENT AS DESCRIBED
- PROPOSED WELL
- EXISTING WELL
- BOTTOM HOLE
- ABANDONED WELL

NAD 83 LATITUDE AND LONGITUDE**PUYPE B17-31D SURFACE HOLE:**

LATITUDE: N40.39959°
 LONGITUDE: W104.58515°
 ELEVATION: 4621'
 PDOP 2.1

2493' FNL, 474' FEL

BOTTOM HOLE:

LATITUDE: N40.40281°
 LONGITUDE: W104.58375°
 1320' FNL, 75' FEL

NEAREST EXISTING WELL:**GUNTHER 18-2 SURFACE HOLE**

LATITUDE: N40.40107°
 LONGITUDE: W104.58584°
 ELEVATION: 4624'
 573' NORTHWEST

QUARTER/QUARTER: SE4/NE4

NEAREST APPARENT PROPERTY LINE:
 155'± SOUTH

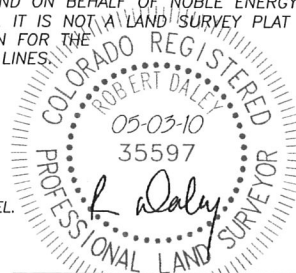
IN ACCORDANCE WITH A REQUEST FROM JOE JOHNSON OF NOBLE ENERGY INC., DALEY LAND SURVEYING, INC. HAS DETERMINED THE SURFACE LOCATION OF THE PUYPE B17-31D WELL TO BE 2493' FNL, 474' FEL, AS MEASURED AT NINETY (90) DEGREES FROM THE SECTION LINES OF SECTION 18, TOWNSHIP 5 NORTH, RANGE 64 WEST OF THE 6TH PRINCIPAL MERIDIAN, WELD COUNTY, COLORADO. THE BOTTOM HOLE LOCATION, PROVIDED BY THE CLIENT, IS TO BE 1320' FNL, 75' FEL OF SECTION 18.

I HEREBY CERTIFY THAT THIS WELL LOCATION CERTIFICATE WAS PREPARED BY ME OR UNDER MY DIRECT SUPERVISION, THAT THE WORK WAS COMPLETED ON 4/30/2010 FOR AND ON BEHALF OF NOBLE ENERGY, INC., AND THAT THIS MAP DOES NOT REPRESENT A BOUNDARY SURVEY, IT IS NOT A LAND SURVEY PLAT OR AN IMPROVEMENT SURVEY PLAT AND IT IS NOT TO BE RELIED UPON FOR THE ESTABLISHMENT OF FENCE, BUILDING OR OTHER FUTURE IMPROVEMENT LINES.

NOTES:

- 1) BEARINGS FOR THIS MAP ARE ASSUMED AND BASED UPON GPS OBSERVATIONS MADE BETWEEN MONUMENTS LOCATED AT THE NORTHEAST CORNER AND EAST QUARTER CORNER OF SECTION 18, T.5N., R.64W.
- 2) HORIZONTAL DATUM IS NAD83.
- 3) VERTICAL DATUM IS NAVD88. ELEVATIONS ARE DERIVED FROM GPS OBSERVATIONS PROCESSED THROUGH OPUS, UTILIZING THE GEOID03 MODEL.
- 4) SEE VISIBLE IMPROVEMENTS EXHIBIT FOR VISIBLE IMPROVEMENTS WITHIN 600' OF PROPOSED SURFACE HOLE LOCATION.
- 5) SURFACE USE: AGRICULTURAL.

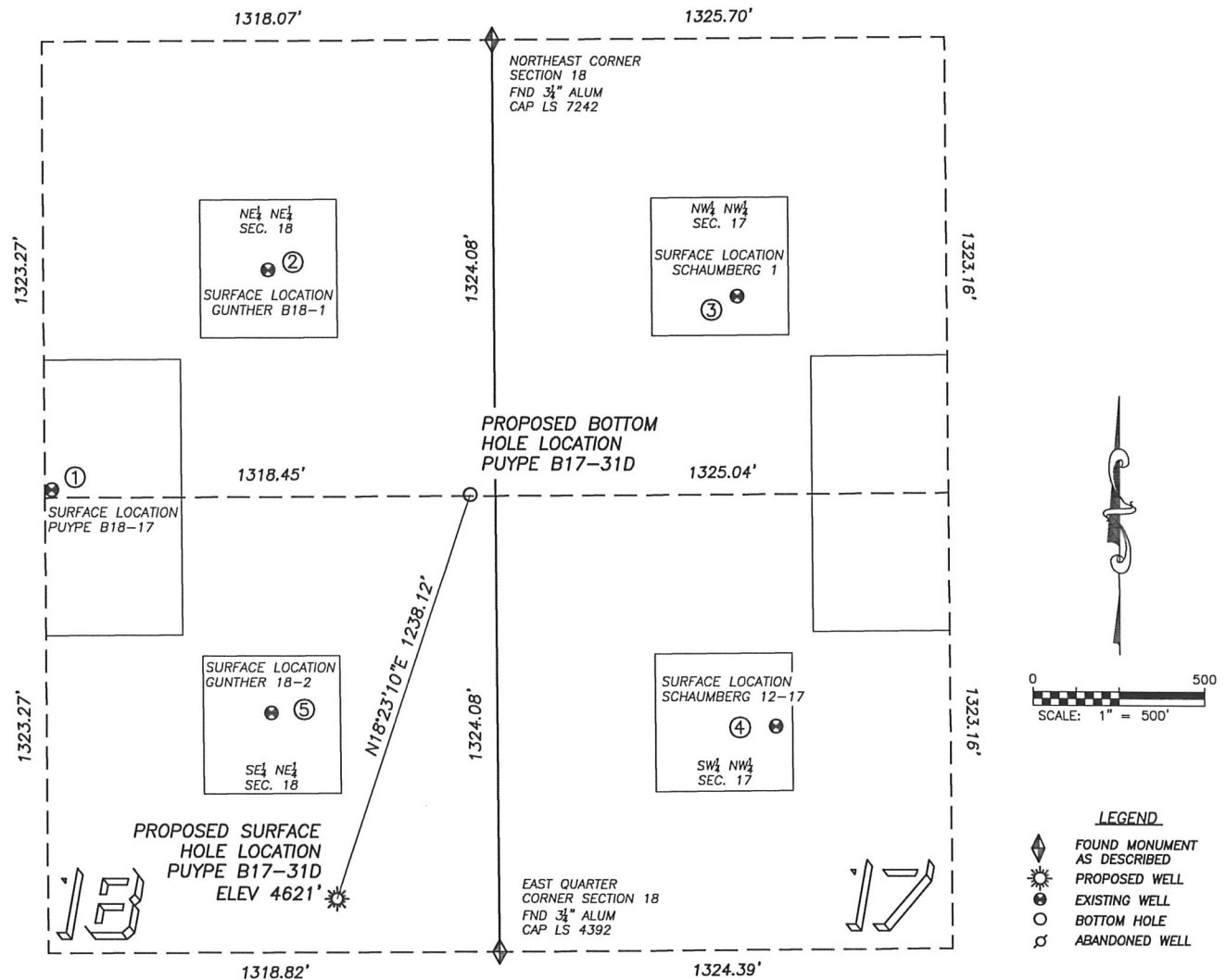
NOTICE: According to Colorado law you MUST commence any legal action based upon any defect in this W.L.C. within three years after you first discover such defect. In no event may any action based upon any such defect in this W.L.C. be commenced more than ten years from the date of the certification shown herein.



FOR AND ON BEHALF OF
 DALEY LAND SURVEYING INC.,
 Robert Daley, PLS 35597

SITE SKETCH PUYPE B17-31D

SECTION 18, TOWNSHIP 5 NORTH, RANGE 64 WEST OF THE 6TH PRINCIPAL MERIDIAN



①
PUYPE B18-17
NE/NE SEC. 18
1300' FNL, 1299' FEL
1224' W OF PROPOSED
BOTTOM HOLE LOCATION
LAT. N40.40285°
LONG. W104.58815°
EL: 4622'
PDOP 1.4

②
GUNTHER B18-1
NE/NE SEC. 18
666' FNL, 661' FEL
879' NW OF PROPOSED
BOTTOM HOLE LOCATION
LAT. N40.40460°
LONG. W104.58587°
EL: 4622'
PDOP 1.4

③
SCHAUMBERG 1
NW/NW SEC. 17
749' FNL, 712' FWL
973' NE OF PROPOSED
BOTTOM HOLE LOCATION
LAT. N40.40440°
LONG. W104.58094°
EL: 4621'
PDOP 2.1

④
SCHAUMBERG 12-17
SW/NW SEC. 17
1999' FNL, 814' FWL
1118' SE OF PROPOSED
BOTTOM HOLE LOCATION
LAT. N40.40097°
LONG. W104.58054°
EL: 4621'
PDOP 1.8

⑤
GUNTHER 18-2
SE/NE SEC. 18
1951' FNL, 662' FEL
861' SE OF PROPOSED
BOTTOM HOLE LOCATION
LAT. N40.40107°
LONG. W104.58584°
EL: 4624'
PDOP 1.6

NOTES:

- 1) THIS DOES NOT REPRESENT A BOUNDARY SURVEY.
- 2) THE LATITUDES AND LONGITUDES SHOWN ARE REFERENCED TO NAD83.
- 3) DATUM FOR ELEVATION IS NAVD88. ELEVATIONS ARE DERIVED FROM GPS-RTK OBSERVATIONS PROCESSED THROUGH OPUS, UTILIZING THE GEOID03 MODEL.

PAD DETAIL

