

WILLIAMS PRODUCTION RMT COMPANY

Well location, BOSELY SG 23-35, located as shown in the NW 1/4 SW 1/4 of Section 35, T7S, R96W, 6th P.M., Garfield County, Colorado.

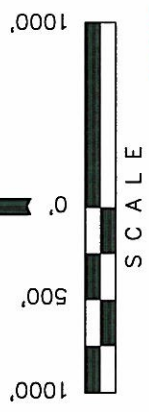
BASIS OF ELEVATION

SPOT ELEVATION AT THE NORTHWEST CORNER OF SECTION 30, T5S, R95W, 6th P.M. TAKEN FROM THE FORKED GULCH QUADRANGLE, COLORADO, GARFIELD COUNTY, 7.5 MINUTE SERIES (TOPOGRAPHICAL MAP) PUBLISHED BY THE UNITED STATES DEPARTMENT OF THE INTERIOR, GEOLOGICAL SURVEY. SAID ELEVATION IS MARKED AS BEING 5966 FEET.

BASIS OF BEARINGS

BASIS OF BEARINGS IS A G.P.S. OBSERVATION.

NOTE:
SEE CURRENT FOOTAGE PLAT #6 FOR
EXISTING IMPROVEMENT WITHIN 400' OF
THE PROPOSED WELL DISTURBANCE.



CERTIFICATE

THIS IS TO CERTIFY THAT THE ABOVE PLAT WAS PREPARED FROM FIELD NOTES OF ACTUAL SURVEYS MADE BY ME OR UNDER MY SUPERVISION AND THAT THE SAME ARE TRUE AND CORRECT TO THE BEST OF MY KNOWLEDGE AND BELIEF.

REGISTERED LAND SURVEYOR
REGISTRATION NO. 17492
STATE OF COLORADO

UNTAH ENGINEERING & LAND SURVEYING

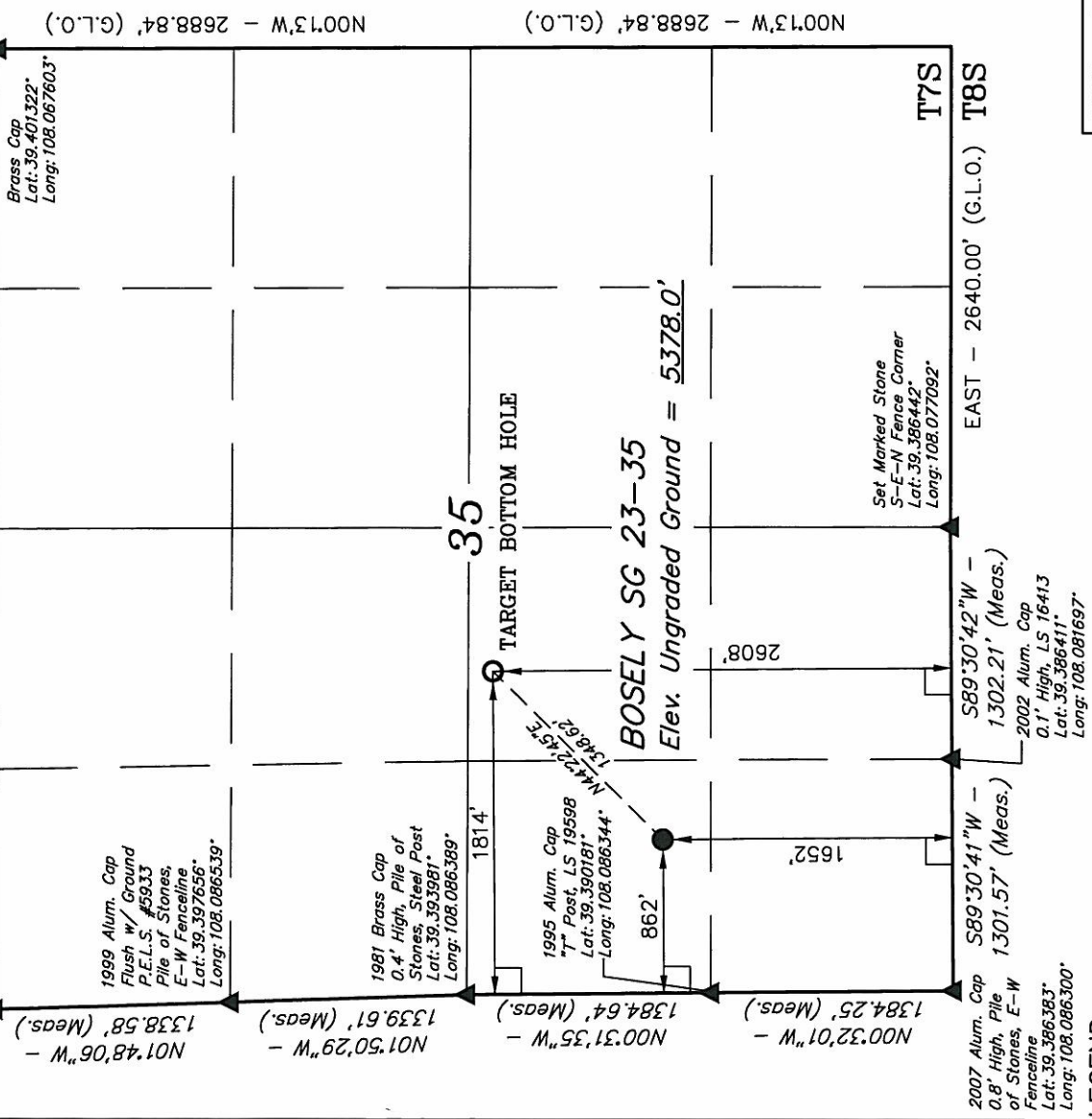
85 SOUTH 200 EAST - VERNAL, UTAH 84078

(435) 789-1017

SCALE	1" = 1000'	DATE SURVEYED:	03-10-10	DATE DRAWN:	07-18-10
PARTY	B.H. C.K. D.R.B.	REFERENCES	G.L.O. PLAT		
WEATHER	WARM	FILE			
					WILLIAMS PRODUCTION RMT COMPANY

T7S, R96W, 6th P.M.

S89°59'43"E - 5394.65' (Meas.)



PDOP = 1.4

NAD 83 (TARGET BOTTOM HOLE)	NAD 83 (SURFACE LOCATION)
LATITUDE = 39°23'36.89" (39.393581)	LATITUDE = 39°23'27.37" (39.390936)
LONGITUDE = 108°04'47.88" (108.079967)	LONGITUDE = 108°04'59.90" (108.083306)
STATE PLANE-COLO. CENTRAL-NAD 83	STATE PLANE-COLO. CENTRAL-NAD 83
N = 1578594.800	N = 1577658.687
E = 2270970.400	E = 2270000.200

LEGEND:	
—	= 90° SYMBOL
●	= PROPOSED WELL HEAD.
▲	= SECTION CORNERS LOCATED.