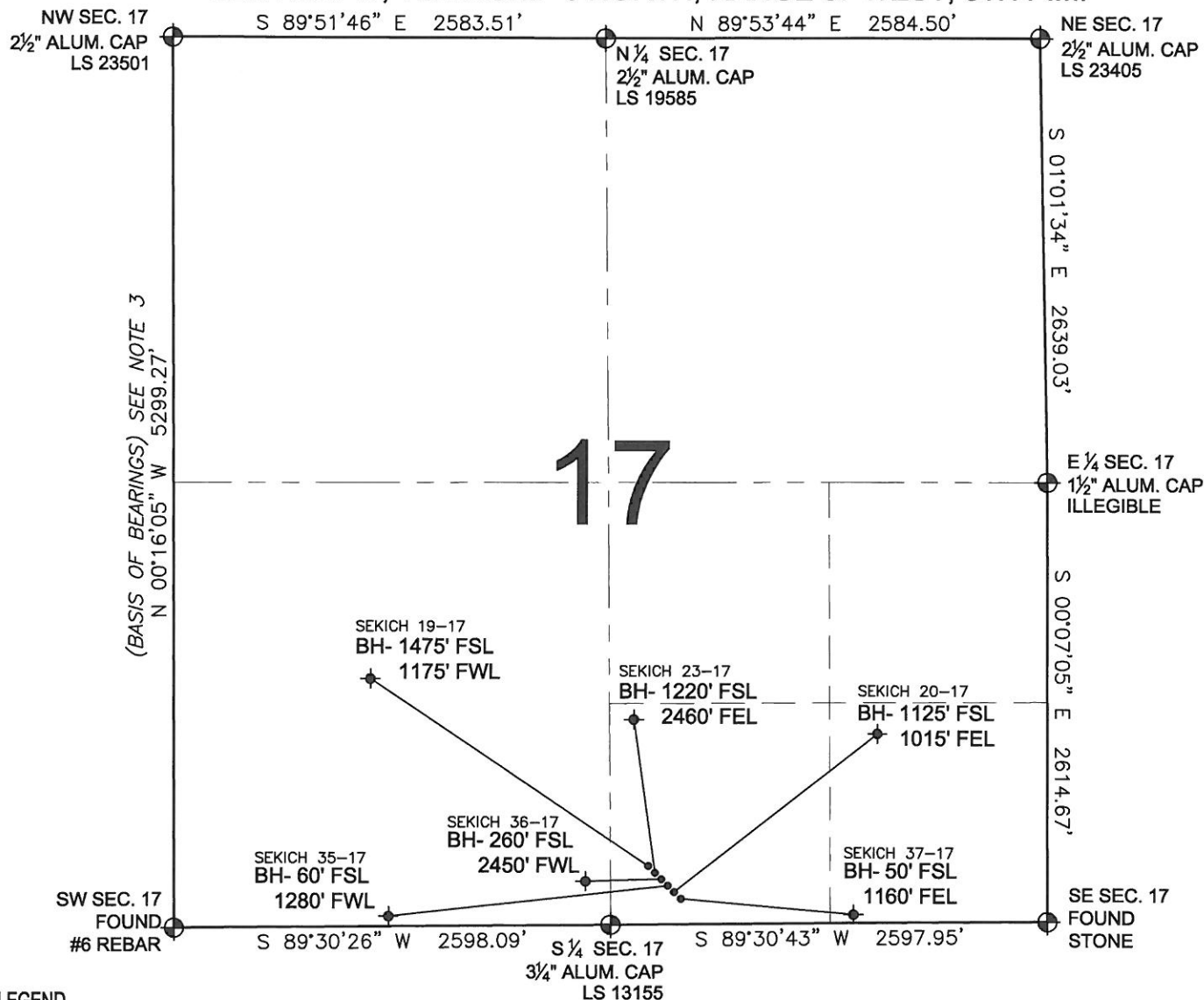


PAD DRAWING - SEKICH 6 PAD

SECTION 17, TOWNSHIP 3 NORTH, RANGE 67 WEST, 6TH P.M.



LEGEND

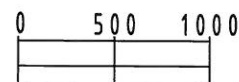
- = EXISTING MONUMENT
 = PROPOSED WELL
 = BOTTOM HOLE
 BH= BOTTOM HOLE
 = EXISTING WELL

NOTES:

- THIS SURVEY WAS DONE BY GPS METHODS AND CONFORMS TO THE MINIMUM STANDARDS SET BY THE C.O.G.C.C., RULE NO. 215
- ELEVATIONS SHOWN AT THE WELL HEAD, AS WELL AS HORIZONTAL CONTROL, ARE BASED ON GPS-RTK VALUES DERIVED FROM DOING 2-HOUR STATIC GPS SESSIONS AND REDUCTIONS USING O.P.U.S. SOLUTIONS.
VERTICAL = NAVD88; HORIZONTAL = NAD83/92
- THE BEARINGS SHOWN HEREON ARE BASED ON GPS OBSERVATIONS BETWEEN THE MONUMENTS SHOWN HEREON AS FOUND ON THE FIELD DATE BELOW.
- DISTANCES SHOWN ARE AT GROUND LEVEL, AS MEASURED IN THE FIELD, WITH TIES TO WELLS MEASURED AT A PERPENDICULAR TO SECTION LINES.

NOTES:

- SEKICH 19-17 TO BE AT 251' FSL, 2284' FEL.
 BOTTOM HOLE AT 1475' FSL & 1175' FWL.
 SEKICH 23-17 TO BE AT 245' FSL, 2277' FEL.
 BOTTOM HOLE AT 1220' FSL & 2460' FEL.
 SEKICH 36-17 TO BE AT 238' FSL, 2269' FEL.
 BOTTOM HOLE AT 260' FSL & 2450' FWL.
 SEKICH 35-17 TO BE AT 232' FSL, 2261' FEL.
 BOTTOM HOLE AT 60' FSL & 1280' FWL.
 SEKICH 20-17 TO BE AT 225' FSL, 2254' FEL.
 BOTTOM HOLE AT 1125' FSL & 1015' FEL.
 SEKICH 37-17 TO BE AT 219' FSL, 2246' FEL.
 BOTTOM HOLE AT 50' FSL & 1160' FEL.



SCALE: 1"=1000'

REVISIONS

INITIAL	DATE
SMF	08-17-10
SMF	10-22-10
SMF	11-23-10

PREPARED BY:



KERR-MCGEE OIL & GAS ONSHORE LP

FIELD DATE:
06-18-10

DRAWING DATE:
06-25-10

BY:
CAM

PAD NAME:

SEKICH 6 PAD

SURFACE LOCATION:

WELD COUNTY, COLORADO
SW 1/4 SE 1/4, SEC. 17, T3N, R67W