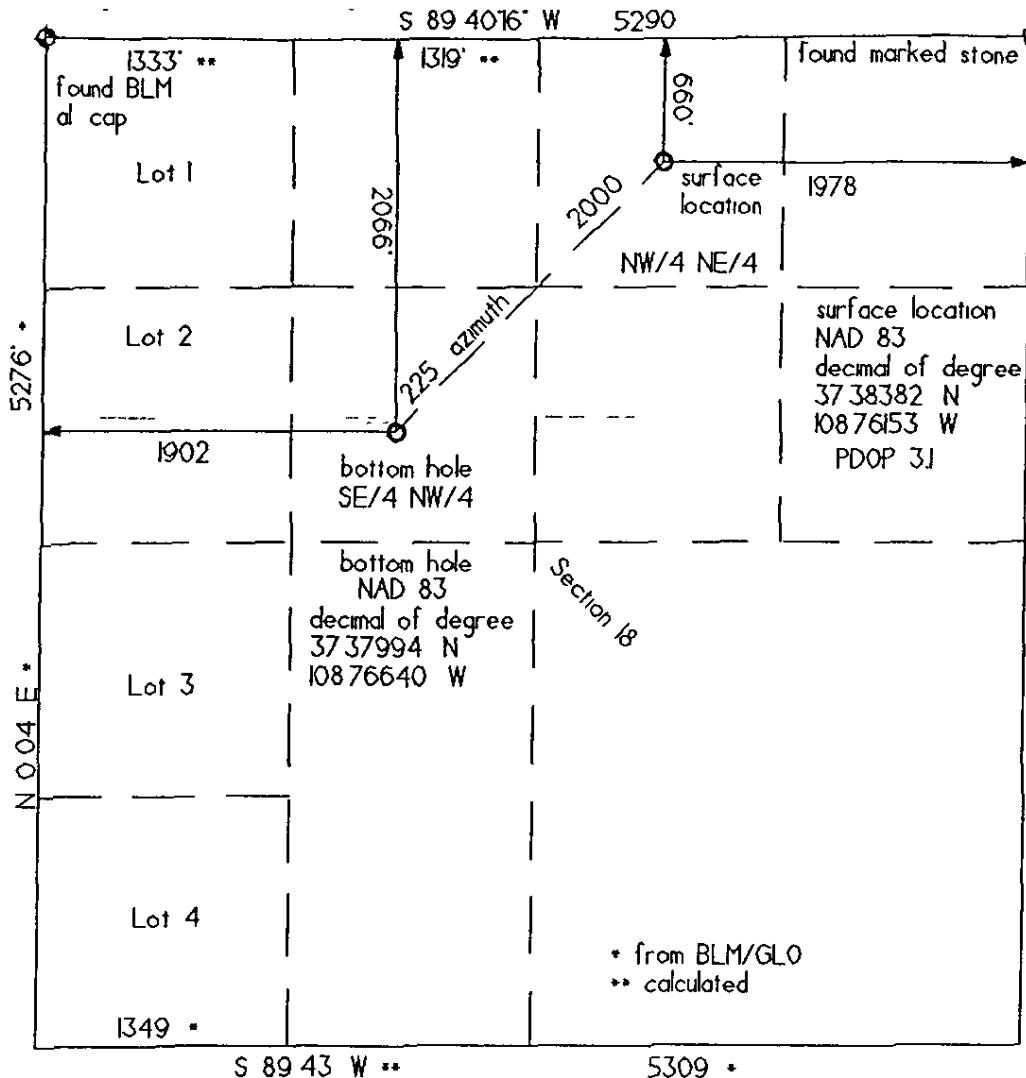


GOODMAN PT 15

Well Location Plat



◆ fnd standard GLO
 □ /BLM monument

bearings from GPS rotated
 minus 2 02 49"

GPS was corrected with
 Nageezi, NM CORS station

There are no occupied
 structures within 400 feet
 Land use dryland farming.

Nearest public road +/- 600'
 No improvements nearby

Distances/dimensions are
 perpendicular to section lines

KINDER MORGAN CO2 COMPANY, LP

Goodman Point - 15 surface location

660' FNL & 1978' FEL

Section 18, T36 N, R17 W, NMPM

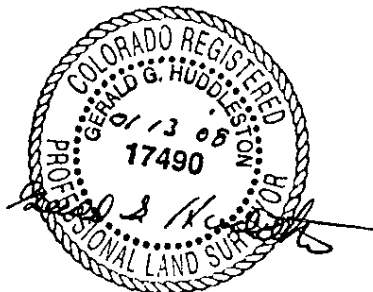
Montezuma County, CO

7012 grd el from GPS

2066 FNL & 1902' FWL bottom hole

Section 18, T36 N R17 W, NMPM

Montezuma County CO



Date of survey 01/08/08
 Date of plat 01/09/08
 Date of plat rev 01/13/08

The above is true and correct to my knowledge and belief