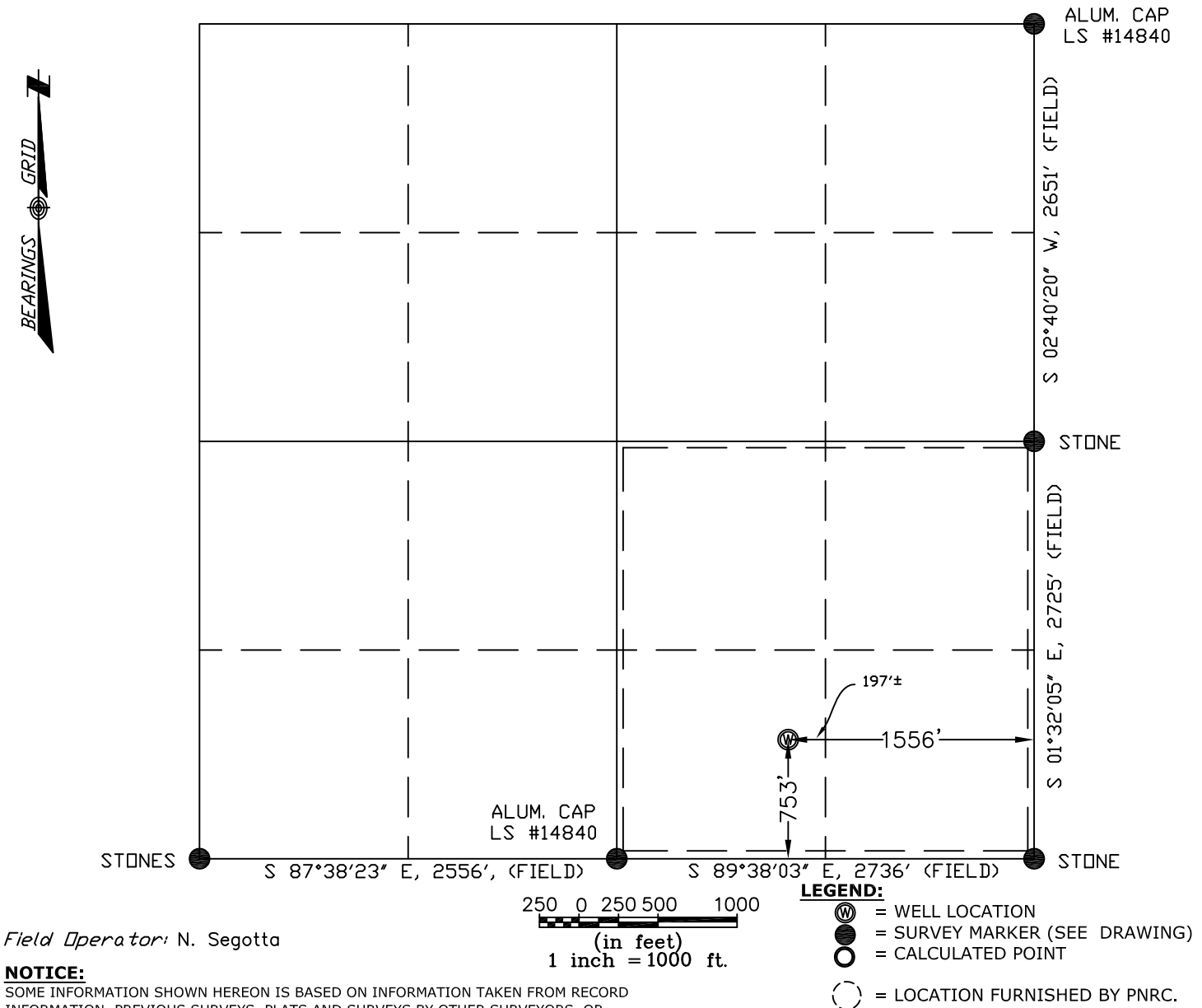


# COLORADO WELL LOCATION

OPERATOR: Pioneer Natural Resources		WELL NAME: Talon 34-25 TR	
SECTION 25 TOWNSHIP 32 S, RANGE 68 W OF THE 6TH P.M., IN LAS ANIMAS COUNTY			
ACTUAL FOOTAGE OF WELL LOCATION: 1556 feet from the EAST line and 753 feet from the SOUTH line.		GROUND ELEV. (NGVD29): 8133'	
BASIS OF BEARING: GPS Observations	BASIS OF ELEVATION: GPS Observations	PDOP: 6.2	
SURFACE USE: Timber	DATE STAKED: September 16, 2010	LAT: N 37.22439°	LONG: W 104.94276° (NAD27)
		LAT: N 37.22441°	LONG: W 104.94332° (NAD83)



**NOTE:**  
ALL WELL LOCATIONS AND ELEVATIONS DERIVED FROM OBSERVED GPS DATA AND DIFFERENTIALLY CORRECTED TO CORS STATION PUEBLO 1 (PID #AJ6946) AND MEET AND/OR EXCEED COGCC RULE 303c AND RULE 215a-h.

NO VISIBLE IMPROVEMENTS WITHIN 200 FEET OF PROPOSED WELLHEAD UNLESS NOTED OTHERWISE.

DISTANCES ARE MEASURED AT 90° (NINETY DEGREES) FROM SAID SECTION LINES TO THE WELL LOCATION.

DESIRED PDOP MAY NOT BE OBTAINED DUE TO NATIVE CONDITIONS OF SITE.

SHIELDS SURVEY L<sup>td</sup>. C<sup>o</sup>. Raton, New Mexico 87740  
(575)445-1232