

# **EOG Resources, Inc.**

**DJ-Hereford Ranch**

**Eastman Creek 04-28H**

**Eastman Creek 04-28H**

**Original Wellbore**

**Plan: APD Directinal Plan**

## **Standard Planning Report**

**24 November, 2010**

# Halliburton Company

## Planning Report

<b>Database:</b>	EOG Database	<b>Local Co-ordinate Reference:</b>	Well Eastman Creek 04-28H
<b>Company:</b>	EOG Resources, Inc.	<b>TVD Reference:</b>	Rig @ 5713.00ft (TBD)
<b>Project:</b>	DJ-Hereford Ranch	<b>MD Reference:</b>	Rig @ 5713.00ft (TBD)
<b>Site:</b>	Eastman Creek 04-28H	<b>North Reference:</b>	True
<b>Well:</b>	Eastman Creek 04-28H	<b>Survey Calculation Method:</b>	Minimum Curvature
<b>Wellbore:</b>	Original Wellbore		
<b>Design:</b>	APD Directinal Plan		

<b>Project</b>	DJ-Hereford Ranch		
<b>Map System:</b>	US State Plane 1927 (Exact solution)	<b>System Datum:</b>	Mean Sea Level
<b>Geo Datum:</b>	NAD 1927 (NADCON CONUS)		
<b>Map Zone:</b>	Colorado North 501		

Site		Eastman Creek 04-28H, Section 28 T11N R66W			
Site Position:		Northing:	566,486.16 usft	Latitude:	40° 53' 10.325 N
From:	Map	Easting:	2,198,372.44 usft	Longitude:	104° 46' 57.373 W
Position Uncertainty:	0.00 ft	Slot Radius:	0.000 in	Grid Convergence:	0.46 °

Well	Eastman Creek 04-28H					
Well Position	+N/-S	0.00 ft	Northing:	566,486.16 usft	Latitude:	40° 53' 10.325 N
	+E/-W	0.00 ft	Easting:	2,198,372.44 usft	Longitude:	104° 46' 57.373 W
Position Uncertainty		0.00 ft	Wellhead Elevation:	0.00 ft	Ground Level:	5,691.00 ft

<b>Wellbore</b>	Original Wellbore				
<b>Magnetics</b>	<b>Model Name</b>	<b>Sample Date</b>	<b>Declination (°)</b>	<b>Dip Angle (°)</b>	<b>Field Strength (nT)</b>
	IGRF200510	11/22/2010	8.95	67.47	53,456

<b>Design</b>	APD Directinal Plan			
<b>Audit Notes:</b>				
<b>Version:</b>	<b>Phase:</b>	PLAN	<b>Tie On Depth:</b>	0.00
<b>Vertical Section:</b>	<b>Depth From (TVD)</b>	<b>+N/-S</b>	<b>+E/-W</b>	<b>Direction</b>
	(ft)	(ft)	(ft)	(°)
	0.00	0.00	0.00	338.24

<b>Plan Sections</b>										
<b>Measured Depth</b>	<b>Inclination</b>	<b>Azimuth</b>	<b>Vertical Depth</b>	<b>+N/-S</b>	<b>+E/-W</b>	<b>Dogleg Rate</b>	<b>Build Rate</b>	<b>Turn Rate</b>	<b>TFO</b>	<b>Target</b>
(ft)	(°)	(°)	(ft)	(ft)	(ft)	(°/100ft)	(°/100ft)	(°/100ft)	(°)	
0.00	0.00	0.00	0.00	0.00	0.00	0.00	0.00	0.00	0.00	
8,063.54	0.00	0.00	8,063.54	0.00	0.00	0.00	0.00	0.00	0.00	
8,813.54	90.00	338.24	8,541.00	443.44	-177.02	12.00	12.00	0.00	338.24	
12,831.19	90.00	338.24	8,541.00	4,174.78	-1,666.53	0.00	0.00	0.00	0.00	Eastman Creek 04-28

# Halliburton Company

## Planning Report

<b>Database:</b>	EOG Database	<b>Local Co-ordinate Reference:</b>	Well Eastman Creek 04-28H
<b>Company:</b>	EOG Resources, Inc.	<b>TVD Reference:</b>	Rig @ 5713.00ft (TBD)
<b>Project:</b>	DJ-Hereford Ranch	<b>MD Reference:</b>	Rig @ 5713.00ft (TBD)
<b>Site:</b>	Eastman Creek 04-28H	<b>North Reference:</b>	True
<b>Well:</b>	Eastman Creek 04-28H	<b>Survey Calculation Method:</b>	Minimum Curvature
<b>Wellbore:</b>	Original Wellbore		
<b>Design:</b>	APD Directinal Plan		

Planned Survey									
Measured Depth (ft)	Inclination (°)	Azimuth (°)	Vertical Depth (ft)	+N/-S (ft)	+E/-W (ft)	Vertical Section (ft)	Dogleg Rate (°/100ft)	Build Rate (°/100ft)	Turn Rate (°/100ft)
0.00	0.00	0.00	0.00	0.00	0.00	0.00	0.00	0.00	0.00
100.00	0.00	0.00	100.00	0.00	0.00	0.00	0.00	0.00	0.00
200.00	0.00	0.00	200.00	0.00	0.00	0.00	0.00	0.00	0.00
300.00	0.00	0.00	300.00	0.00	0.00	0.00	0.00	0.00	0.00
400.00	0.00	0.00	400.00	0.00	0.00	0.00	0.00	0.00	0.00
500.00	0.00	0.00	500.00	0.00	0.00	0.00	0.00	0.00	0.00
600.00	0.00	0.00	600.00	0.00	0.00	0.00	0.00	0.00	0.00
700.00	0.00	0.00	700.00	0.00	0.00	0.00	0.00	0.00	0.00
800.00	0.00	0.00	800.00	0.00	0.00	0.00	0.00	0.00	0.00
900.00	0.00	0.00	900.00	0.00	0.00	0.00	0.00	0.00	0.00
1,000.00	0.00	0.00	1,000.00	0.00	0.00	0.00	0.00	0.00	0.00
1,100.00	0.00	0.00	1,100.00	0.00	0.00	0.00	0.00	0.00	0.00
1,200.00	0.00	0.00	1,200.00	0.00	0.00	0.00	0.00	0.00	0.00
1,300.00	0.00	0.00	1,300.00	0.00	0.00	0.00	0.00	0.00	0.00
1,400.00	0.00	0.00	1,400.00	0.00	0.00	0.00	0.00	0.00	0.00
1,500.00	0.00	0.00	1,500.00	0.00	0.00	0.00	0.00	0.00	0.00
1,600.00	0.00	0.00	1,600.00	0.00	0.00	0.00	0.00	0.00	0.00
1,700.00	0.00	0.00	1,700.00	0.00	0.00	0.00	0.00	0.00	0.00
1,800.00	0.00	0.00	1,800.00	0.00	0.00	0.00	0.00	0.00	0.00
1,845.00	0.00	0.00	1,845.00	0.00	0.00	0.00	0.00	0.00	0.00
9 5/8"									
1,900.00	0.00	0.00	1,900.00	0.00	0.00	0.00	0.00	0.00	0.00
2,000.00	0.00	0.00	2,000.00	0.00	0.00	0.00	0.00	0.00	0.00
2,100.00	0.00	0.00	2,100.00	0.00	0.00	0.00	0.00	0.00	0.00
2,200.00	0.00	0.00	2,200.00	0.00	0.00	0.00	0.00	0.00	0.00
2,300.00	0.00	0.00	2,300.00	0.00	0.00	0.00	0.00	0.00	0.00
2,400.00	0.00	0.00	2,400.00	0.00	0.00	0.00	0.00	0.00	0.00
2,500.00	0.00	0.00	2,500.00	0.00	0.00	0.00	0.00	0.00	0.00
2,600.00	0.00	0.00	2,600.00	0.00	0.00	0.00	0.00	0.00	0.00
2,700.00	0.00	0.00	2,700.00	0.00	0.00	0.00	0.00	0.00	0.00
2,800.00	0.00	0.00	2,800.00	0.00	0.00	0.00	0.00	0.00	0.00
2,900.00	0.00	0.00	2,900.00	0.00	0.00	0.00	0.00	0.00	0.00
3,000.00	0.00	0.00	3,000.00	0.00	0.00	0.00	0.00	0.00	0.00
3,100.00	0.00	0.00	3,100.00	0.00	0.00	0.00	0.00	0.00	0.00
3,200.00	0.00	0.00	3,200.00	0.00	0.00	0.00	0.00	0.00	0.00
3,300.00	0.00	0.00	3,300.00	0.00	0.00	0.00	0.00	0.00	0.00
3,400.00	0.00	0.00	3,400.00	0.00	0.00	0.00	0.00	0.00	0.00
3,500.00	0.00	0.00	3,500.00	0.00	0.00	0.00	0.00	0.00	0.00
3,600.00	0.00	0.00	3,600.00	0.00	0.00	0.00	0.00	0.00	0.00
3,700.00	0.00	0.00	3,700.00	0.00	0.00	0.00	0.00	0.00	0.00
3,800.00	0.00	0.00	3,800.00	0.00	0.00	0.00	0.00	0.00	0.00
3,900.00	0.00	0.00	3,900.00	0.00	0.00	0.00	0.00	0.00	0.00
4,000.00	0.00	0.00	4,000.00	0.00	0.00	0.00	0.00	0.00	0.00
4,100.00	0.00	0.00	4,100.00	0.00	0.00	0.00	0.00	0.00	0.00
4,200.00	0.00	0.00	4,200.00	0.00	0.00	0.00	0.00	0.00	0.00
4,300.00	0.00	0.00	4,300.00	0.00	0.00	0.00	0.00	0.00	0.00
4,400.00	0.00	0.00	4,400.00	0.00	0.00	0.00	0.00	0.00	0.00
4,500.00	0.00	0.00	4,500.00	0.00	0.00	0.00	0.00	0.00	0.00
4,600.00	0.00	0.00	4,600.00	0.00	0.00	0.00	0.00	0.00	0.00
4,700.00	0.00	0.00	4,700.00	0.00	0.00	0.00	0.00	0.00	0.00
4,800.00	0.00	0.00	4,800.00	0.00	0.00	0.00	0.00	0.00	0.00
4,900.00	0.00	0.00	4,900.00	0.00	0.00	0.00	0.00	0.00	0.00
5,000.00	0.00	0.00	5,000.00	0.00	0.00	0.00	0.00	0.00	0.00
5,100.00	0.00	0.00	5,100.00	0.00	0.00	0.00	0.00	0.00	0.00

## Halliburton Company

## Planning Report

<b>Database:</b>	EOG Database	<b>Local Co-ordinate Reference:</b>	Well Eastman Creek 04-28H
<b>Company:</b>	EOG Resources, Inc.	<b>TVD Reference:</b>	Rig @ 5713.00ft (TBD)
<b>Project:</b>	DJ-Hereford Ranch	<b>MD Reference:</b>	Rig @ 5713.00ft (TBD)
<b>Site:</b>	Eastman Creek 04-28H	<b>North Reference:</b>	True
<b>Well:</b>	Eastman Creek 04-28H	<b>Survey Calculation Method:</b>	Minimum Curvature
<b>Wellbore:</b>	Original Wellbore		
<b>Design:</b>	APD Directinal Plan		

## Planned Survey

Measured Depth (ft)	Inclination (°)	Azimuth (°)	Vertical Depth (ft)	+N/-S (ft)	+E/-W (ft)	Vertical Section (ft)	Dogleg Rate (°/100ft)	Build Rate (°/100ft)	Turn Rate (°/100ft)
5,200.00	0.00	0.00	5,200.00	0.00	0.00	0.00	0.00	0.00	0.00
5,300.00	0.00	0.00	5,300.00	0.00	0.00	0.00	0.00	0.00	0.00
5,400.00	0.00	0.00	5,400.00	0.00	0.00	0.00	0.00	0.00	0.00
5,500.00	0.00	0.00	5,500.00	0.00	0.00	0.00	0.00	0.00	0.00
5,600.00	0.00	0.00	5,600.00	0.00	0.00	0.00	0.00	0.00	0.00
5,700.00	0.00	0.00	5,700.00	0.00	0.00	0.00	0.00	0.00	0.00
5,800.00	0.00	0.00	5,800.00	0.00	0.00	0.00	0.00	0.00	0.00
5,900.00	0.00	0.00	5,900.00	0.00	0.00	0.00	0.00	0.00	0.00
6,000.00	0.00	0.00	6,000.00	0.00	0.00	0.00	0.00	0.00	0.00
6,100.00	0.00	0.00	6,100.00	0.00	0.00	0.00	0.00	0.00	0.00
6,200.00	0.00	0.00	6,200.00	0.00	0.00	0.00	0.00	0.00	0.00
6,300.00	0.00	0.00	6,300.00	0.00	0.00	0.00	0.00	0.00	0.00
6,400.00	0.00	0.00	6,400.00	0.00	0.00	0.00	0.00	0.00	0.00
6,500.00	0.00	0.00	6,500.00	0.00	0.00	0.00	0.00	0.00	0.00
6,600.00	0.00	0.00	6,600.00	0.00	0.00	0.00	0.00	0.00	0.00
6,700.00	0.00	0.00	6,700.00	0.00	0.00	0.00	0.00	0.00	0.00
6,800.00	0.00	0.00	6,800.00	0.00	0.00	0.00	0.00	0.00	0.00
6,900.00	0.00	0.00	6,900.00	0.00	0.00	0.00	0.00	0.00	0.00
7,000.00	0.00	0.00	7,000.00	0.00	0.00	0.00	0.00	0.00	0.00
7,100.00	0.00	0.00	7,100.00	0.00	0.00	0.00	0.00	0.00	0.00
7,200.00	0.00	0.00	7,200.00	0.00	0.00	0.00	0.00	0.00	0.00
7,300.00	0.00	0.00	7,300.00	0.00	0.00	0.00	0.00	0.00	0.00
7,400.00	0.00	0.00	7,400.00	0.00	0.00	0.00	0.00	0.00	0.00
7,500.00	0.00	0.00	7,500.00	0.00	0.00	0.00	0.00	0.00	0.00
7,600.00	0.00	0.00	7,600.00	0.00	0.00	0.00	0.00	0.00	0.00
7,700.00	0.00	0.00	7,700.00	0.00	0.00	0.00	0.00	0.00	0.00
7,800.00	0.00	0.00	7,800.00	0.00	0.00	0.00	0.00	0.00	0.00
7,900.00	0.00	0.00	7,900.00	0.00	0.00	0.00	0.00	0.00	0.00
8,000.00	0.00	0.00	8,000.00	0.00	0.00	0.00	0.00	0.00	0.00
8,063.54	0.00	0.00	8,063.54	0.00	0.00	0.00	0.00	0.00	0.00
8,100.00	4.38	338.24	8,099.96	1.29	-0.52	1.39	12.00	12.00	0.00
8,200.00	16.38	338.24	8,198.15	17.99	-7.18	19.37	12.00	12.00	0.00
8,300.00	28.38	338.24	8,290.45	53.28	-21.27	57.37	12.00	12.00	0.00
8,400.00	40.38	338.24	8,372.84	105.62	-42.16	113.73	12.00	12.00	0.00
8,500.00	52.38	338.24	8,441.70	172.73	-68.95	185.98	12.00	12.00	0.00
8,600.00	64.38	338.24	8,494.04	251.67	-100.46	270.98	12.00	12.00	0.00
8,700.00	76.38	338.24	8,527.57	338.99	-135.32	365.00	12.00	12.00	0.00
8,800.00	88.38	338.24	8,540.81	430.87	-172.00	463.93	12.00	12.00	0.00
8,813.53	90.00	338.24	8,541.00	443.43	-177.01	477.46	12.00	12.00	0.00
7"									
8,813.54	90.00	338.24	8,541.00	443.44	-177.02	477.46	12.00	12.00	0.00
8,900.00	90.00	338.24	8,541.00	523.74	-209.07	563.93	0.00	0.00	0.00
9,000.00	90.00	338.24	8,541.00	616.62	-246.15	663.93	0.00	0.00	0.00
9,100.00	90.00	338.24	8,541.00	709.49	-283.22	763.93	0.00	0.00	0.00
9,200.00	90.00	338.24	8,541.00	802.36	-320.29	863.93	0.00	0.00	0.00
9,300.00	90.00	338.24	8,541.00	895.24	-357.37	963.93	0.00	0.00	0.00
9,400.00	90.00	338.24	8,541.00	988.11	-394.44	1,063.93	0.00	0.00	0.00
9,500.00	90.00	338.24	8,541.00	1,080.98	-431.52	1,163.93	0.00	0.00	0.00
9,600.00	90.00	338.24	8,541.00	1,173.86	-468.59	1,263.93	0.00	0.00	0.00
9,700.00	90.00	338.24	8,541.00	1,266.73	-505.67	1,363.93	0.00	0.00	0.00
9,800.00	90.00	338.24	8,541.00	1,359.60	-542.74	1,463.93	0.00	0.00	0.00
9,900.00	90.00	338.24	8,541.00	1,452.48	-579.81	1,563.93	0.00	0.00	0.00
10,000.00	90.00	338.24	8,541.00	1,545.35	-616.89	1,663.93	0.00	0.00	0.00

# Halliburton Company

## Planning Report

<b>Database:</b>	EOG Database	<b>Local Co-ordinate Reference:</b>	Well Eastman Creek 04-28H
<b>Company:</b>	EOG Resources, Inc.	<b>TVD Reference:</b>	Rig @ 5713.00ft (TBD)
<b>Project:</b>	DJ-Hereford Ranch	<b>MD Reference:</b>	Rig @ 5713.00ft (TBD)
<b>Site:</b>	Eastman Creek 04-28H	<b>North Reference:</b>	True
<b>Well:</b>	Eastman Creek 04-28H	<b>Survey Calculation Method:</b>	Minimum Curvature
<b>Wellbore:</b>	Original Wellbore		
<b>Design:</b>	APD Directinal Plan		

Planned Survey										
Measured Depth (ft)	Inclination (°)	Azimuth (°)	Vertical Depth (ft)	+N/-S (ft)	+E/-W (ft)	Vertical Section (ft)	Dogleg Rate (°/100ft)	Build Rate (°/100ft)	Turn Rate (°/100ft)	
10,100.00	90.00	338.24	8,541.00	1,638.23	-653.96	1,763.93	0.00	0.00	0.00	
10,200.00	90.00	338.24	8,541.00	1,731.10	-691.04	1,863.93	0.00	0.00	0.00	
10,300.00	90.00	338.24	8,541.00	1,823.97	-728.11	1,963.93	0.00	0.00	0.00	
10,400.00	90.00	338.24	8,541.00	1,916.85	-765.18	2,063.93	0.00	0.00	0.00	
10,500.00	90.00	338.24	8,541.00	2,009.72	-802.26	2,163.93	0.00	0.00	0.00	
10,600.00	90.00	338.24	8,541.00	2,102.59	-839.33	2,263.93	0.00	0.00	0.00	
10,700.00	90.00	338.24	8,541.00	2,195.47	-876.41	2,363.93	0.00	0.00	0.00	
10,800.00	90.00	338.24	8,541.00	2,288.34	-913.48	2,463.93	0.00	0.00	0.00	
10,900.00	90.00	338.24	8,541.00	2,381.21	-950.56	2,563.93	0.00	0.00	0.00	
11,000.00	90.00	338.24	8,541.00	2,474.09	-987.63	2,663.93	0.00	0.00	0.00	
11,100.00	90.00	338.24	8,541.00	2,566.96	-1,024.70	2,763.93	0.00	0.00	0.00	
11,200.00	90.00	338.24	8,541.00	2,659.83	-1,061.78	2,863.93	0.00	0.00	0.00	
11,300.00	90.00	338.24	8,541.00	2,752.71	-1,098.85	2,963.93	0.00	0.00	0.00	
11,400.00	90.00	338.24	8,541.00	2,845.58	-1,135.93	3,063.93	0.00	0.00	0.00	
11,500.00	90.00	338.24	8,541.00	2,938.46	-1,173.00	3,163.93	0.00	0.00	0.00	
11,600.00	90.00	338.24	8,541.00	3,031.33	-1,210.07	3,263.93	0.00	0.00	0.00	
11,700.00	90.00	338.24	8,541.00	3,124.20	-1,247.15	3,363.93	0.00	0.00	0.00	
11,800.00	90.00	338.24	8,541.00	3,217.08	-1,284.22	3,463.93	0.00	0.00	0.00	
11,900.00	90.00	338.24	8,541.00	3,309.95	-1,321.30	3,563.93	0.00	0.00	0.00	
12,000.00	90.00	338.24	8,541.00	3,402.82	-1,358.37	3,663.93	0.00	0.00	0.00	
12,100.00	90.00	338.24	8,541.00	3,495.70	-1,395.45	3,763.93	0.00	0.00	0.00	
12,200.00	90.00	338.24	8,541.00	3,588.57	-1,432.52	3,863.93	0.00	0.00	0.00	
12,300.00	90.00	338.24	8,541.00	3,681.44	-1,469.59	3,963.93	0.00	0.00	0.00	
12,400.00	90.00	338.24	8,541.00	3,774.32	-1,506.67	4,063.93	0.00	0.00	0.00	
12,500.00	90.00	338.24	8,541.00	3,867.19	-1,543.74	4,163.93	0.00	0.00	0.00	
12,600.00	90.00	338.24	8,541.00	3,960.07	-1,580.82	4,263.93	0.00	0.00	0.00	
12,700.00	90.00	338.24	8,541.00	4,052.94	-1,617.89	4,363.93	0.00	0.00	0.00	
12,800.00	90.00	338.24	8,541.00	4,145.81	-1,654.96	4,463.93	0.00	0.00	0.00	
12,831.19	90.00	338.24	8,541.00	4,174.78	-1,666.53	4,495.12	0.00	0.00	0.00	
Eastman Creek 04-28H (BHL)										

Design Targets										
Target Name	Dip Angle (°)	Dip Dir. (°)	TVD (ft)	+N/-S (ft)	+E/-W (ft)	Northing (usft)	Easting (usft)	Latitude	Longitude	
- hit/miss target										
- Shape										
Eastman Creek 04-28H	0.00	0.00	8,541.00	4,174.78	-1,666.53	570,647.31	2,196,672.20	40° 53' 51.575 N	104° 47' 19.073 W	
- plan hits target center										
- Point										

Casing Points						
Measured Depth (ft)	Vertical Depth (ft)	Name	Casing Diameter (in)	Hole Diameter (in)		
1,845.00	1,845.00	9 5/8"	9.625	13.500		
8,813.53	8,541.00	7"	7.000	8.750		
12,831.19	8,541.00	4 1/2"	4.500	6.000		

# Halliburton Company

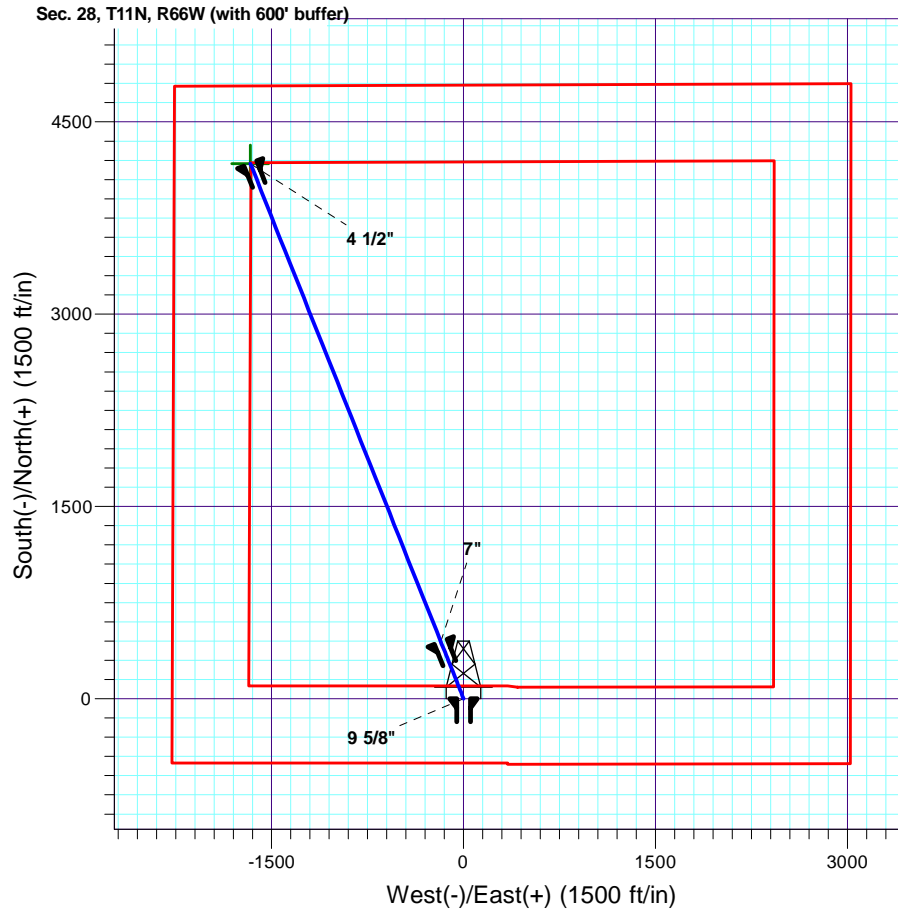
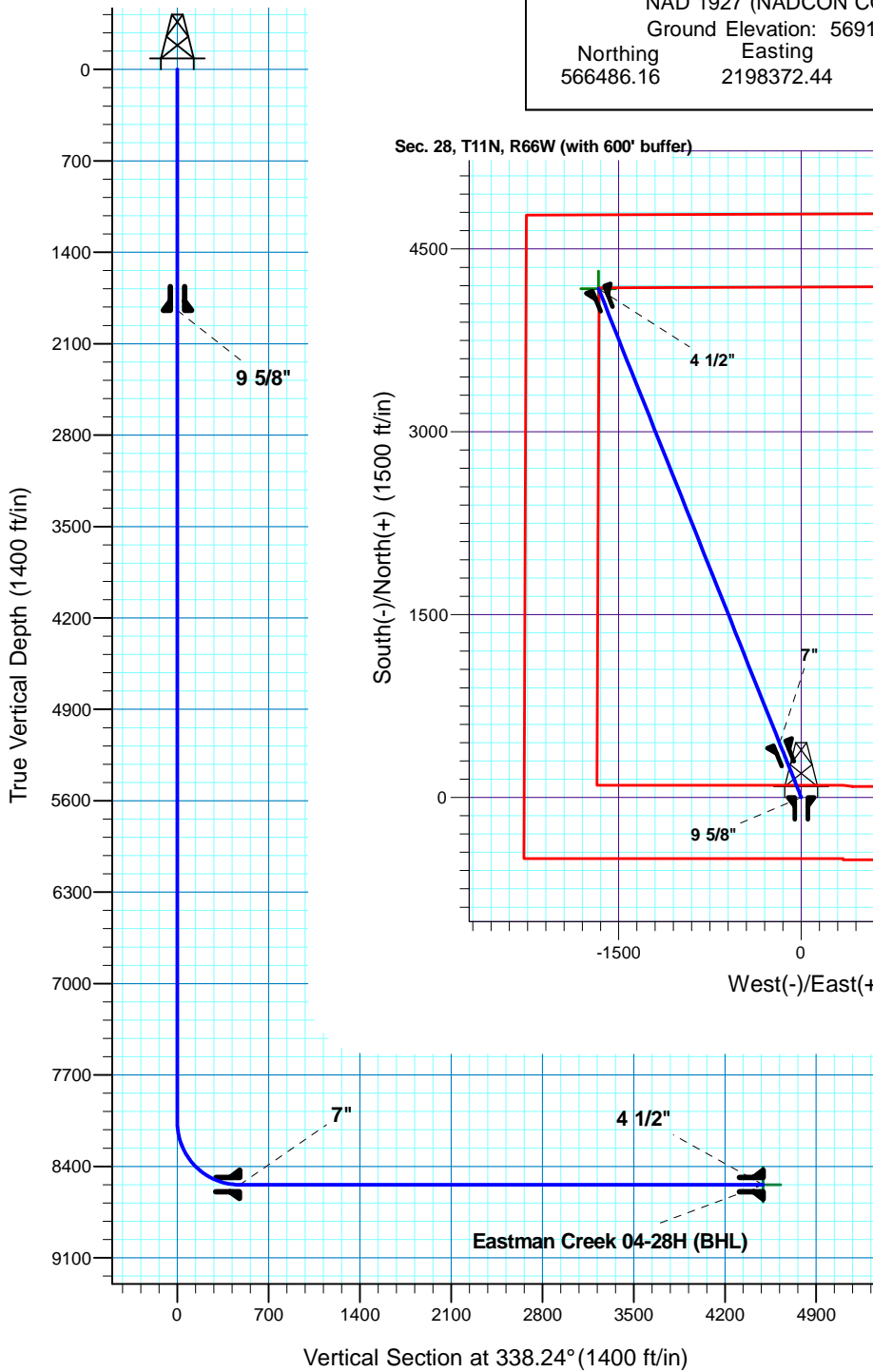
## Planning Report

<b>Database:</b>	EOG Database	<b>Local Co-ordinate Reference:</b>	Well Eastman Creek 04-28H
<b>Company:</b>	EOG Resources, Inc.	<b>TVD Reference:</b>	Rig @ 5713.00ft (TBD)
<b>Project:</b>	DJ-Hereford Ranch	<b>MD Reference:</b>	Rig @ 5713.00ft (TBD)
<b>Site:</b>	Eastman Creek 04-28H	<b>North Reference:</b>	True
<b>Well:</b>	Eastman Creek 04-28H	<b>Survey Calculation Method:</b>	Minimum Curvature
<b>Wellbore:</b>	Original Wellbore		
<b>Design:</b>	APD Directinal Plan		

Formations						
Measured Depth (ft)	Vertical Depth (ft)	Name	Lithology	Dip (°)	Dip Direction (°)	
0.00	0.00	WHITE RIVER		0.00		
1,421.00	1,421.00	FOX HILLS	Sandstone	0.00		
1,931.00	1,931.00	PIERRE SHALE	Shale	0.00		
4,781.00	4,781.00	RICHARD SAND	Sandstone	0.00		
5,051.00	5,051.00	HYGIENE	Sandstone	0.00		
8,347.44	8,331.00	SHARON SPRINGS		0.00		
8,533.13	8,461.00	NIOBRARA	Shale	0.00		
8,551.72	8,471.00	B1 CHALK	Chalk	0.00		
8,693.54	8,526.00	B CHALK	Chalk	0.00		
8,813.53	8,541.00	TARGET ZONE	Chalk	0.00		

# Eastman Creek 04-28H Section 28 T11N R66W Weld County, CO

Surface Location			
NAD 1927 (NADCON CONUS)	Colorado North 501		
Ground Elevation: 5691.00	Rig @ 5713.00ft (TBD)		
Northing	Easting	Latitude	Longitude
566486.16	2198372.44	40° 53' 10.325 N	104° 46' 57.373 W



7" Casing Shoe  
944' FSL  
2101' FWL

Project: DJ-Hereford Ranch  
Site: Eastman Creek 04-28H  
Well: Eastman Creek 04-28H  
Plan: APD Directional Plan



Azimuths to True North  
Magnetic North: 8.95°  
Magnetic Field  
Strength: 53455.5snT  
Dip Angle: 67.47°  
Date: 11/22/2010  
Model: IGRF200510

SECTION DETAILS										
Sec	MD	Inc	Azi	TVD	+N/-S	+E/-W	Dleg	TFace	VSect	Target
1	0.00	0.00	0.00	0.00	0.00	0.00	0.00	0.00	0.00	
2	8063.54	0.00	0.00	8063.54	0.00	0.00	0.00	0.00	0.00	
3	8813.54	90.00	338.24	8541.00	443.44	-177.02	12.00	338.24	477.46	
4	12831.19	90.00	338.24	8541.00	4174.78	-1666.53	0.00	0.00	4495.12	Eastman Creek 04-28H (BHL)
TARGET DETAILS										
Name	TVD	+N/-S	+E/-W	Northing	Easting	Latitude	Longitude	Shape		
Eastman Creek 04-28H (BHL)	8541.00	4174.78	-1666.53	570647.31	2196672.20	40° 53' 51.575 N	104° 47' 19.073 W	Point		