

SLAWSON COMPANIES
1675 BROADWAY STE 1600
DENVER, Colorado

Mousetrap 36-11-66

Hydro Resources 4

Post Job Summary

Cement Surface Casing

Prepared for:	Andy Peterson
Date Prepared:	10/25/2010
Version: 1	

Service Supervisor: Roy Salinas

Submitted by: Wes Aaron

HALLIBURTON

HALLIBURTON

Service Supervisor Reports

Job Log

Date/Time	Chart #	Activity Code	Pump Rate	Cum Vol	Pump		Pressure (psig)	Comments
10/19/2010 13:55		Start Job						
10/19/2010 14:00		Test Lines	2	2			3000.0	Test lines w/ water
10/19/2010 14:01		Pump Spacer 1	5	50			36.0	Pump 50 bbl of water for spacer
10/19/2010 14:12		Pump Lead Cement	5	132			80.0	Pump 440 sks of HLC STANDARD @ 13.1ppg (132 bbl)
10/19/2010 14:41		Pump Tail Cement	5	47			78.0	Pump 225 sks of STANDARD 1-11 @ 15.6 ppg (46.8 bbl)
10/19/2010 14:56		Drop Top Plug	0	0			.0	Drop top plug
10/19/2010 14:57		Pump Displacement	5				90.0	Pump 123 bbl of water for displacement
10/19/2010 15:41		Bump Plug	2	123			964.0	bump plug w/ 500 psi over displacement psi
10/19/2010 15:45		Release Casing Pressure	0	0			.0	FLOATS HELD GOOD
10/19/2010 15:50		Check Floats						
10/19/2010 16:00		Pre-Rig Down Safety Meeting						
10/19/2010 16:10		Rig-Down Equipment						
10/19/2010 17:00		Depart Location Safety Meeting						
10/19/2010 17:10		Depart from Service Center or Other Site						

The Road to Excellence Starts with Safety

Sold To #: 305440	Ship To #: 2813883	Quote #:	Sales Order #: 7713638
Customer: SLAWSON COMPANIES		Customer Rep: CHAPMAN, TERRY	
Well Name: Mousetrap		Well #: 36-11-66	API/UWI #: 05-123-31826
Field: WILDCAT	City (SAP): BRIGGSDALE	County/Parish: Weld	State: Colorado
Contractor: Hydro Resources		Rig/Platform Name/Num: Hydro Resources 4	
Job Purpose: Cement Surface Casing			
Well Type: Development Well		Job Type: Cement Surface Casing	
Sales Person: FLING, MATTHEW	Srvc Supervisor: SALINAS, JOSE	MBU ID Emp #: 100319	

Job Personnel

HES Emp Name	Exp Hrs	Emp #	HES Emp Name	Exp Hrs	Emp #	HES Emp Name	Exp Hrs	Emp #
CHAVEZ, JEROME Christophe		458298	MILLER, GEOFFREY Alan		460232	RODRIGUEZ, RICARDO		219601
SALINAS, JOSE R		100319						

Equipment

HES Unit #	Distance-1 way	HES Unit #	Distance-1 way	HES Unit #	Distance-1 way	HES Unit #	Distance-1 way
10948695	75 mile	10972458	75 mile	11019275C	75 mile	11064046C	75 mile
11488570C	75 mile						

Job Hours

Date	On Location Hours	Operating Hours	Date	On Location Hours	Operating Hours	Date	On Location Hours	Operating Hours
TOTAL	Total is the sum of each column separately							

Job

Job Times

Formation Name								
Formation Depth (MD)	Top	Bottom			Called Out	Date	Time	Time Zone
Form Type		BHST			On Location	19 - Oct - 2010	12:00	MST
Job depth MD	1761. ft	Job Depth TVD	1761. ft		Job Started	19 - Oct - 2010	14:00	MST
Water Depth		Wk Ht Above Floor	3. ft		Job Completed	19 - Oct - 2010	16:00	MST
Perforation Depth (MD)	From	To			Departed Loc	19 - Oct - 2010	17:10	MST

Well Data

Description	New / Used	Max pressure psig	Size in	ID in	Weight lbm/ft	Thread	Grade	Top MD ft	Bottom MD ft	Top TVD ft	Bottom TVD ft
Open Hole				13.5				.	1765.	.	.
Surface Casing	Unknown		9.625	8.921	36.		J-55	.	1761.	.	.

Sales/Rental/3rd Party (HES)

Description	Qty	Qty uom	Depth	Supplier
PLUG,CMTG,TOP,9 5/8,HWE,8.16 MIN/9.06 MA	1	EA		

Tools and Accessories

Type	Size	Qty	Make	Depth	Type	Size	Qty	Make	Depth	Type	Size	Qty	Make
Guide Shoe					Packer					Top Plug			
Float Shoe					Bridge Plug					Bottom Plug			
Float Collar					Retainer					SSR plug set			
Insert Float										Plug Container			
Stage Tool										Centralizers			

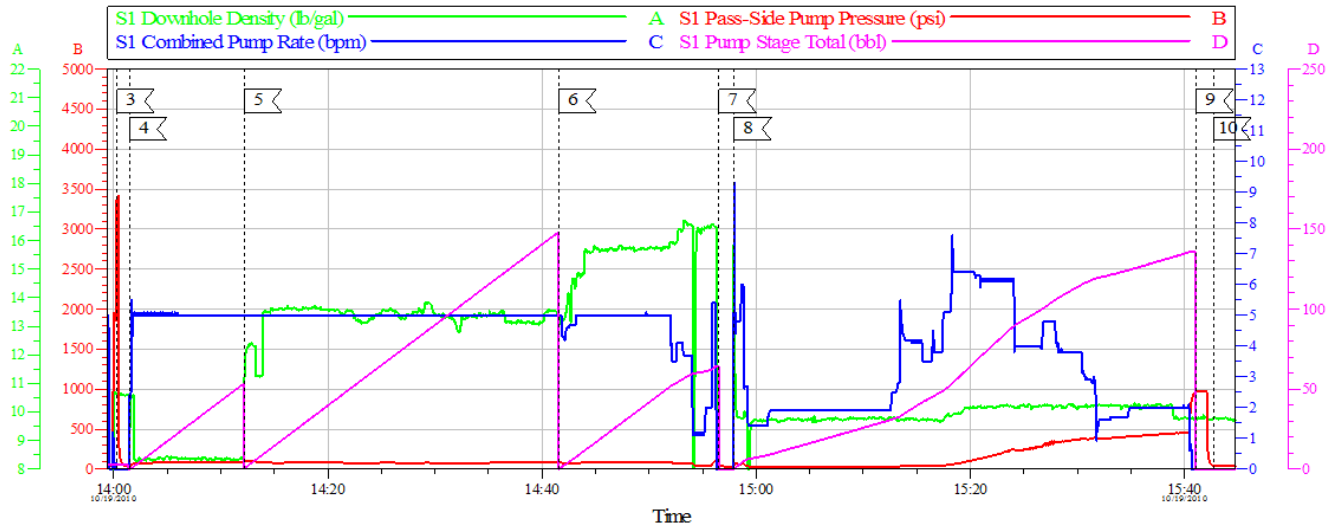
Miscellaneous Materials

Gelling Agt	Conc	Surfactant	Conc	Acid Type	Qty	Conc	%
-------------	------	------------	------	-----------	-----	------	---

Treatment Fld		Conc		Inhibitor		Conc		Sand Type		Size		Qty	
Fluid Data													
Stage/Plug #: 1													
Fluid #	Stage Type	Fluid Name			Qty	Qty uom	Mixing Density lbm/gal	Yield ft ³ /sk	Mix Fluid Gal/sk	Rate bbl/min	Total Mix Fluid Gal/sk		
1	Water Spacer				50.00	bbl	8.4	.0	42.0	5.0			
2	Halliburton Light Lead 13.10#	HALLIBURTON LIGHT STANDARD - SBM (12313)			440.0	sacks	13.1	1.69	8.64	5.0	8.64		
3 %		CALCIUM CHLORIDE, PELLET, 50 LB (101509387)											
0.125 lbm		POLY-E-FLAKE (101216940)											
8.64 Gal		FRESH WATER											
3	Tail 15.6#	CMT - STANDARD TYPE I / II CEMENT (101439798)			225.0	sacks	15.6	1.17	5.24	5.0	5.24		
94 lbm		TYPE I / II CEMENT, BULK (101439798)											
2 %		CALCIUM CHLORIDE, PELLET, 50 LB (101509387)											
0.125 lbm		POLY-E-FLAKE (101216940)											
5.24 Gal		FRESH WATER											
4	DISPLACEMENT					bbl	8.33			5.0			
Calculated Values		Pressures				Volumes							
Displacement		Shut In: Instant				Lost Returns		Cement Slurry		Pad			
Top Of Cement		5 Min				Cement Returns		Actual Displacement		Treatment			
Frac Gradient		15 Min				Spacers		Load and Breakdown		Total Job			
Rates													
Circulating		Mixing				Displacement				Avg. Job			
Cement Left In Pipe		Amount	42 ft	Reason	Shoe Joint								
Frac Ring # 1 @	ID	Frac ring # 2 @	ID	Frac Ring # 3 @	ID	Frac Ring # 4 @	ID						
The Information Stated Herein Is Correct					Customer Representative Signature								

HALLIBURTON

SLAWSON COMPANIES
MOUSETRAP 36-11-38 9 5/8 SURFACE
SO# 7713638



Global Event Log							
Intersection		SPPP	Intersection		SPPP	Intersection	SPPP
3 <	Test Lines	14:00:18 3379	4 <	Pump Spacer 1	14:01:28 36.57	5 <	Pump Lead Cement 14:12:13 92.48
6 <	Pump Tail Cement	14:41:33 80.30	7 <	Drop Top Plug	14:56:30 45.22	8 <	Pump Displacement 14:57:57 71.12
9 <	Bump Plug	15:41:04 964.6	10 <	End Job	15:42:43 41.30		

Customer:
Well Description:
Cement Program:

Job Date: 19-Oct-2010
Job Type:
Cement Program:

Sales Order #: 7713638
ADC Used:
Well #:

OptiCemv64.9
10-Oct-10 15:51