

SLAWSON COMPANIES  
1675 BROADWAY STE 1600  
DENVER, Colorado

Whistle Jack 16-9-63

**ENSIGN 3D**

## **Post Job Summary**

### **Cement Surface Casing**

Prepared for:	Andy Peterson
Date Prepared:	10/5/2010
Version: 1	

Service Supervisor: Dale Sanford

Submitted by: Wes Aaron

**HALLIBURTON**

# HALLIBURTON

## ***Service Supervisor Reports***

---

### **Job Log**

Date/Time	Chart #	Activity Code	Pump Rate	Cum Vol	Pump		Pressure (psig)	Comments
10/04/2010 16:37		Pump Spacer 1	5	230			750.0	Slick Water, Wash Down Csg.
10/04/2010 17:50		Shutdown						Rig up cmt head
10/04/2010 18:15		Test Lines	0.5				1500.0	
10/04/2010 18:16		Pump Spacer 1	2.5	10			35.0	Water
10/04/2010 18:22		Pump Lead Cement	5	58			90.0	195 Sks @ 13.1#
10/04/2010 18:35		Pump Tail Cement	5	41			130.0	195 Sks @ 5.6#
10/04/2010 18:46		Drop Top Plug						
10/04/2010 18:46		Pump Displacement	4	90.5			650.0	Water
10/04/2010 19:09		Bump Plug	4				800.0	Well circulated @ 75 bbl displace pumped Dirty water to surface
10/04/2010 19:13		End Job						

*The Road to Excellence Starts with Safety*

Sold To #: 305440	Ship To #: 2811244	Quote #:	Sales Order #: 7682127
Customer: SLAWSON COMPANIES		Customer Rep: Chapman, Terry	
Well Name: Whistle Jack		Well #: 16-9-63	API/UWI #: 05-123-32012-00
Field: WILDCAT	City (SAP): BRIGGSDALE	County/Parish: Weld	State: Colorado
Contractor: ENSIGN		Rig/Platform Name/Num: 3D	
Job Purpose: Cement Surface Casing			
Well Type: Development Well		Job Type: Cement Surface Casing	
Sales Person: FLING, MATTHEW	Srvc Supervisor: SANFORD, DALE		MBU ID Emp #: 219527

## Job Personnel

HES Emp Name	Exp Hrs	Emp #	HES Emp Name	Exp Hrs	Emp #	HES Emp Name	Exp Hrs	Emp #
BANUELOS, GUADALUPE		372277	SANFORD, DALE A		219527	Sauter, Mark		0
VIGIL, DANIEL Paul		471469						

## Equipment

HES Unit #	Distance-1 way	HES Unit #	Distance-1 way	HES Unit #	Distance-1 way	HES Unit #	Distance-1 way
10857012C	75 mile	10977079	75 mile	11398490	75 mile		

## Job Hours

Date	On Location Hours	Operating Hours	Date	On Location Hours	Operating Hours	Date	On Location Hours	Operating Hours
TOTAL	Total is the sum of each column separately							

## Job

Formation Name					Job Times			
Formation Depth (MD)	Top		Bottom		Called Out	04 - Oct - 2010	12:00	MST
Form Type	BHST				On Location	04 - Oct - 2010	15:30	MST
Job depth MD	1211. ft		Job Depth TVD	1211. ft	Job Started	04 - Oct - 2010	16:19	MST
Water Depth	Wk Ht Above Floor				Job Completed	04 - Oct - 2010	19:13	MST
Perforation Depth (MD)	From		To		Departed Loc	04 - Oct - 2010	20:00	MST

## Well Data

Description	New / Used	Max pressure psig	Size in	ID in	Weight lbm/ft	Thread	Grade	Top MD ft	Bottom MD ft	Top TVD ft	Bottom TVD ft
Open Hole				12.25				.	1235.	.	1235.
Surface Casing	New		9.625	8.921	36.		J-55	.	1211.	.	1211.

Sales/Rental/3<sup>rd</sup> Party (HES)

Description	Qty	Qty uom	Depth	Supplier
PLUG,CMTG,TOP,9 5/8,HWE,8.16 MIN/9.06 MA	1	EA		

## Tools and Accessories

Type	Size	Qty	Make	Depth	Type	Size	Qty	Make	Depth	Type	Size	Qty	Make
Guide Shoe					Packer					Top Plug			
Float Shoe					Bridge Plug					Bottom Plug			
Float Collar					Retainer					SSR plug set			
Insert Float										Plug Container			
Stage Tool										Centralizers			

## Miscellaneous Materials

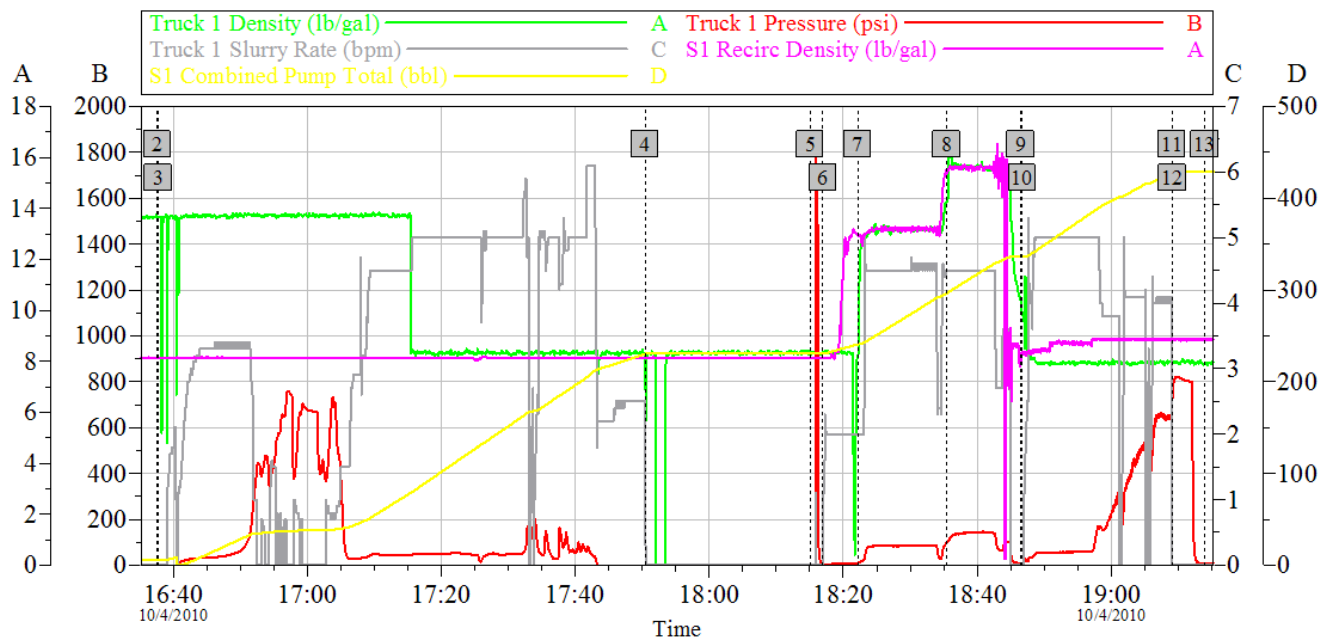
Gelling Agt	Conc	Surfactant	Conc	Acid Type	Qty	Conc	%
Treatment Fld	Conc	Inhibitor	Conc	Sand Type	Size		Qty

## Fluid Data

Stage/Plug #: 1									
Fluid #	Stage Type	Fluid Name	Qty	Qty uom	Mixing Density lbm/gal	Yield ft <sup>3</sup> /sk	Mix Fluid Gal/sk	Rate bbl/min	Total Mix Fluid Gal/sk
1	Dyed Water Spacer		50.00	bbl	8.4	.0	42.0	5.0	
2	Lead Cement 13.10#	HALLIBURTON LIGHT STANDARD - SBM (12313)	195.0	sacks	13.1	1.69	8.64	5.0	8.64
	3 %	CALCIUM CHLORIDE, PELLET, 50 LB (101509387)							
	0.125 lbm	POLY-E-FLAKE (101216940)							
	8.638 Gal	FRESH WATER							
3	Tail Cement 15.6#	CMT - STANDARD TYPE I / II CEMENT (101439798)	195.0	sacks	15.6	1.2	5.24	5.0	5.24
	94 lbm	TYPE I / II CEMENT, BULK (101439798)							
	2 %	CALCIUM CHLORIDE, PELLET, 50 LB (101509387)							
	0.125 lbm	POLY-E-FLAKE (101216940)							
	5.238 Gal	FRESH WATER							
Calculated Values		Pressures		Volumes					
Displacement		Shut In: Instant		Lost Returns		Cement Slurry		Pad	
Top Of Cement		5 Min		Cement Returns		Actual Displacement		Treatment	
Frac Gradient		15 Min		Spacers		Load and Breakdown		Total Job	
Rates									
Circulating		Mixing		Displacement		Avg. Job			
Cement Left In Pipe	Amount	40 ft	Reason	Shoe Joint					
Frac Ring # 1 @	ID	Frac ring # 2 @	ID	Frac Ring # 3 @	ID	Frac Ring # 4 @	ID		
The Information Stated Herein Is Correct				Customer Representative Signature					

# HALLIBURTON

## SLAWSON WHISTLE JACK 16-9-63 SURFACE



### Global Event Log

1 Starting Job	16:19:31	2 Start Job	16:37:35	3 Circulate Well	16:37:43
4 Shut Down Put on head	17:50:24	5 Test Lines	18:15:04	6 Pump Spacer 1	18:16:57
7 Pump Lead Cement	18:22:10	8 Pump Tail Cement	18:35:24	9 Drop Top Plug	18:46:29
10 Pump Displacement	18:46:41	11 Bump Plug	19:09:04	12 Bump Plug	19:09:06
13 End Job	19:13:57	14 Ending Job	19:20:30		

Customer: SLAWSON  
Well Description: 9 5/8 SURF

Job Date: 04-Oct-2010  
UWI:

Sales Order #: 7682127

OptiCem v6.4.2  
04-Oct-10 19:24