
BILL BARRETT CORPORATION E-BILL

**GGU FED 21C-33-691
PICEANCE
Garfield County , Colorado**

**Cement Surface Casing
18-Mar-2010**

Post Job Report

The Road to Excellence Starts with Safety

Sold To #: 343492	Ship To #: 2774165	Quote #:	Sales Order #: 7247908
Customer: BILL BARRETT CORPORATION E-BILL	Customer Rep: South, Jodi		
Well Name: GGU FED	Well #: 21C-33-691	API/UWI #:	
Field: PICEANCE	City (SAP): SILT	County/Parish: Garfield	State: Colorado
Contractor: BARRETT	Rig/Platform Name/Num: PETRO PLUS		
Job Purpose: Cement Surface Casing			
Well Type: Development Well	Job Type: Cement Surface Casing		
Sales Person: METLI, MARSHALL	Srv Supervisor: Rockert, Christopher	MBU ID Emp #:	332914

Job Personnel

HES Emp Name	Exp Hrs	Emp #	HES Emp Name	Exp Hrs	Emp #	HES Emp Name	Exp Hrs	Emp #
KUKUS, CRAIG A	2	369124	Rockert, Christopher	2	332914	SMITH, CHRISTOPHER Scott	2	452619
STEELE, BENJAMIN F	2	458599						

Equipment

HES Unit #	Distance-1 way	HES Unit #	Distance-1 way	HES Unit #	Distance-1 way	HES Unit #	Distance-1 way
11259884	120	11360881-10871245	120	11027039-11021972	120		

Job Hours

Date	On Location Hours	Operating Hours	Date	On Location Hours	Operating Hours	Date	On Location Hours	Operating Hours
3/18/10	2	1						

TOTAL	Total is the sum of each column separately							
-------	--	--	--	--	--	--	--	--

Job

Formation Name	Top	Bottom	Called Out	Date	Time	Time Zone
Formation Depth (MD)			On Location	18 - Mar - 2010	00:00	MST
Form Type		BHST	On Location	18 - Mar - 2010	02:00	MST
Job depth MD	822.2 ft	Job Depth TVD	Job Started	18 - Mar - 2010	13:05	MST
Water Depth		Wk Ht Above Floor	Job Completed	18 - Mar - 2010	13:45	MST
Perforation Depth (MD)	From	To	Departed Loc	18 - Mar - 2010	00:00	MST

Well Data

Description	New / Used	Max pressure psig	Size in	ID in	Weight lbm/ft	Thread	Grade	Top MD ft	Bottom MD ft	Top TVD ft	Bottom TVD ft
-------------	------------	-------------------	---------	-------	---------------	--------	-------	-----------	--------------	------------	---------------

Sales/Rental/3rd Party (HES)

Description	Qty	Qty uom	Depth	Supplier
PLUG,CMTG,TOP,9 5/8,HWE,8.16 MIN/9.06 MA	1	EA		

Tools and Accessories

Type	Size	Qty	Make	Depth	Type	Size	Qty	Make	Depth	Type	Size	Qty	Make
Guide Shoe					Packer					Top Plug	9.625	1	
Float Shoe					Bridge Plug					Bottom Plug			
Float Collar					Retainer					SSR plug set			
Insert Float										Plug Container	9.625	1	
Stage Tool										Centralizers			

Miscellaneous Materials

Gelling Agt	Conc	Surfactant	Conc	Acid Type	Qty	Conc	%
Treatment Fld	Conc	Inhibitor	Conc	Sand Type	Size	Qty	

Fluid Data									
Stage/Plug #: 1									
Fluid #	Stage Type	Fluid Name	Qty	Qty uom	Mixing Density lbm/gal	Yield ft ³ /sk	Mix Fluid Gal/sk	Rate bbl/min	Total Mix Fluid Gal/sk
1	WATER SPACER		20	bbl	.	.0	.0	.0	
2	Lead Cement	VERSACEM (TM) SYSTEM (452010)	50.9	sacks	12.3	2.38	13.75		
3	Tail Cement	SWIFTCES (TM) SYSTEM (452990)	30.6	sacks	14.2	1.43	6.88		6.88
6.88 Gal		FRESH WATER							
4	DISPLACEMENT		60.1	bbl	.	.0	.0	.0	
Calculated Values		Pressures		Volumes					
Displacement	60.1	Shut In: Instant		Lost Returns		Cement Slurry	81.5	Pad	
Top Of Cement	SURFACE	5 Min		Cement Returns	24	Actual Displacement	60.1	Treatment	
Frac Gradient		15 Min		Spacers	20	Load and Breakdown		Total Job	
Rates									
Circulating		Mixing	6	Displacement	6	Avg. Job	6		
Cement Left In Pipe	Amount	44.8 ft	Reason	Shoe Joint					
Frac Ring # 1 @	ID	Frac ring # 2 @	ID	Frac Ring # 3 @	ID	Frac Ring # 4 @	ID		
The Information Stated Herein Is Correct				Customer Representative Signature					

The Road to Excellence Starts with Safety

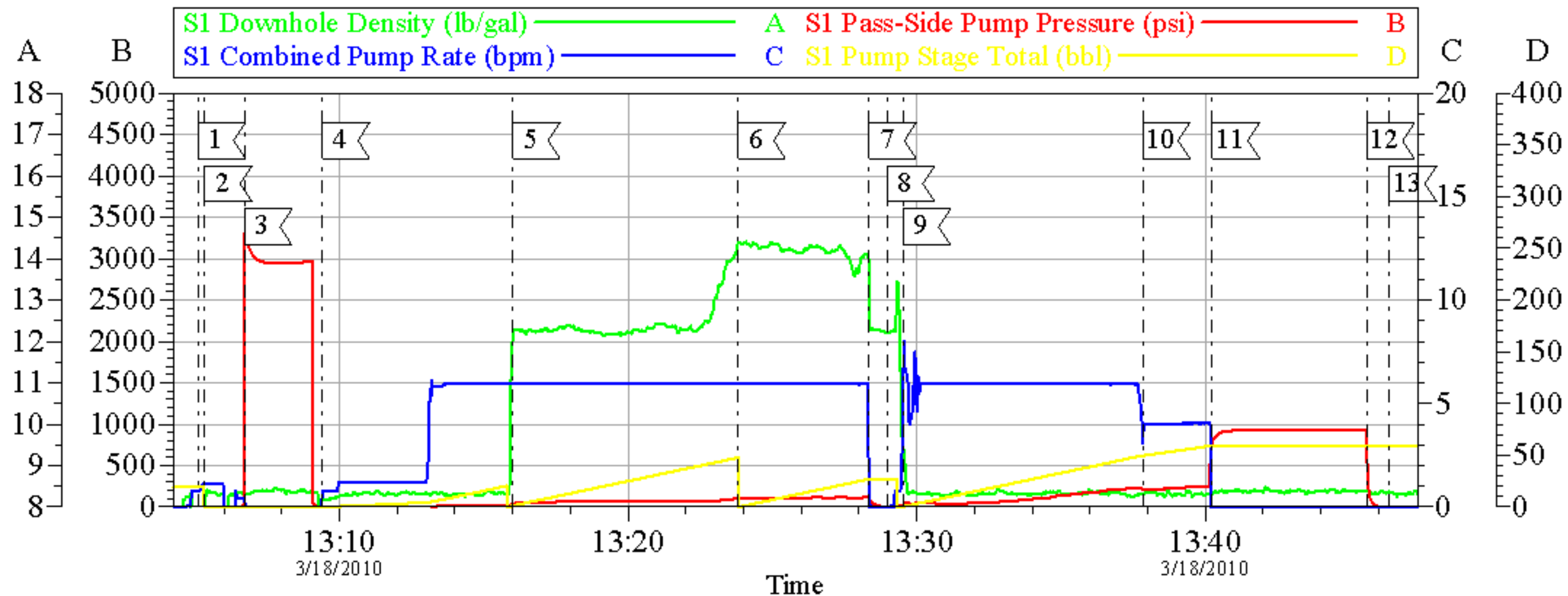
Sold To #: 343492	Ship To #: 2774165	Quote #:	Sales Order #: 7247908
Customer: BILL BARRETT CORPORATION E-BILL		Customer Rep: South, Jodi	
Well Name: GGU FED	Well #: 21C-33-691	API/UWI #:	
Field: PICEANCE	City (SAP): SILT	County/Parish: Garfield	State: Colorado
Legal Description:			
Lat: N 0 deg. OR N 0 deg. 0 min. 0 secs.		Long: E 0 deg. OR E 0 deg. 0 min. 0 secs.	
Contractor: BARRETT		Rig/Platform Name/Num: PETRO PLUS	
Job Purpose: Cement Surface Casing			Ticket Amount:
Well Type: Development Well		Job Type: Cement Surface Casing	
Sales Person: METLI, MARSHALL		Srvc Supervisor: Rockert, Christopher	MBU ID Emp #: 332914

Activity Description	Date/Time	Cht #	Rate bbl/min	Volume bbl		Pressure psig		Comments
				Stage	Total	Tubing	Casing	
Rig-Up Equipment	03/18/2010 12:45							TD-845/ TP-822.22/ SHOE-44.8/ HOLE 12 3/8
Pre-Job Safety Meeting	03/18/2010 12:50							HEAD WAS NOT SECURED DOWN FOR JOB
Start Job	03/18/2010 13:05							OFFLINES CEMENT HEAD
Pump Water	03/18/2010 13:05		1		1		11.0	WATER AHEAD TO FILL LINES
Test Lines	03/18/2010 13:06						2970.0	NO LEAKS
Pump Spacer	03/18/2010 13:09		6		20		31.0	FRESH WATER
Pump Lead Cement	03/18/2010 13:16		6		50.9		79.0	120 SKS/2.38 YIELD/ 13.75 GAL-SK/ 12.3 PPG
Pump Tail Cement	03/18/2010 13:23		6		30.6		130.0	120 SKS/ 1.43 YIELD/ 6.88 GAL SK/14.2 PPG
Shutdown	03/18/2010 13:28							
Drop Top Plug	03/18/2010 13:28							PLUG AWAY
Pump Displacement	03/18/2010 13:29		6				73.0	FRESH WATER. SAW RETURNS 8 BBLS INTO DISPLACEMENT
Other	03/18/2010 13:32		6		36			24 BBLS OF CEMENT TO SURFACE. USED 40# OF SUGAR FOR VAC TRUCK
Slow Rate	03/18/2010 13:37		4		50		240.0	
Bump Plug	03/18/2010 13:40		4		60.1		290.0	PRESSURED UP TO 900 PSI ON FLOATS
Check Floats	03/18/2010 13:45							FLOATS HELD

Activity Description	Date/Time	Cht #	Rate bbl/ min	Volume bbl		Pressure psig		Comments
				Stage	Total	Tubing	Casing	
End Job	03/18/2010 13:46							
Rig-Down Equipment	03/18/2010 13:50							SAW GOOD LIFT PRESSURE THROUGH DISPLACEMENT
Other	03/18/2010 14:08							THANK YOU FOR USING HALLIBURTON CHRIS ROCKERT AND CREW
Other	03/18/2010 14:09							WAIT ON LOCATION FOR NEXT JOB

BILL BARRETT

9 5/8 SURFACE



Local Event Log

1	START JOB	13:05:06	2	PRIME LINES	13:05:20
3	TEST LINES	13:06:43	4	PUMP SPACER	13:09:25
5	PUMP LEAD CEMENT	13:16:00	6	PUMP TAIL CEMENT	13:23:49
7	SHUTDOWN	13:28:21	8	DROP PLUG	13:28:59
9	PUMP DISPLACEMENT	13:29:32	10	SLOW RATE	13:37:49
11	BUMP PLUG	13:40:14	12	CHECK FLOATS	13:45:36
13	END JOB	13:46:22			

Customer: BILL BARRETT
Well Description: 21C-33-691
Customer Representative: JODY SOUTH

Job Date: 18-Mar-2010
Job Type: 9 5/8 SURFACE
Cement Supervisor: CHRIS ROCKERT

Sales Order #: 7247908
ADC Used: YES
Elite #: 8

OptiCem v6.4.6
18-Mar-10 14:04