
BILL BARRETT CORPORATION E-BILL

**GGU FED 11C-33-691
PICEANCE
Garfield County , Colorado**

**Cement Surface Casing
19-Mar-2010**

Post Job Report

Sold To #: 343492	Ship To #: 2774166	Quote #:	Sales Order #: 7246778
Customer: BILL BARRETT CORPORATION E-BILL		Customer Rep: South, Jodi	
Well Name: GGU FED		Well #: 11C-33-691	API/UWI #:
Field: PICEANCE	City (SAP): SILT	County/Parish: Garfield	State: Colorado
Contractor: BARRETT		Rig/Platform Name/Num: PETRO PLUS	
Job Purpose: Cement Surface Casing			
Well Type: Development Well		Job Type: Cement Surface Casing	
Sales Person: METLI, MARSHALL		Srvs Supervisor: Rockert, Christopher	MBU ID Emp #: 332914

HES Emp Name	Exp Hrs	Emp #	HES Emp Name	Exp Hrs	Emp #	HES Emp Name	Exp Hrs	Emp #
KUKUS, CRAIG A	2	369124	Rockert, Christopher	2	332914	STEELE, BENJAMIN F	2	458599

HES Unit #	<i>Distance-1 way</i>	HES Unit #	<i>Distance-1 way</i>	HES Unit #	<i>Distance-1 way</i>	HES Unit #	<i>Distance-1 way</i>
11259884	120	11360881- 10871245	120	11027039- 11021972	120		

Date	On Location Hours	Operating Hours	Date	On Location Hours	Operating Hours	Date	On Location Hours	Operating Hours
3/19/10	2	1						

Job	Job Times
-----	-----------

Formation Name							Date	Time	Time Zone
Formation Depth (MD)	Top		Bottom			Called Out			
Form Type			BHST			On Location			
Job depth MD	808.5 ft		Job Depth TVD	808.5 ft		Job Started	19 - Mar - 2010	00:00	MST
Water Depth			Wk Ht Above Floor	3. ft		Job Completed	19 - Mar - 2010	00:00	MST
Perforation Depth (MD)	From		To			Departed Loc			

<i>Description</i>	New / Used	Max pressure psig	Size in	ID in	Weight lbm/ft	Thread	Grade	Top MD ft	Bottom MD ft	Top TVD ft	Bottom TVD ft
--------------------	-----------------------	----------------------------------	--------------------	------------------	--------------------------	---------------	--------------	----------------------	-----------------------------	---------------------------	------------------------------

Description	Qty	Qty uom	Depth	Supplier
PLUG,CMTG,TOP,9 5/8,HWE,8.16 MIN/9.06 MA	1	EA		

Type	Size	Qty	Make	Depth	Type	Size	Qty	Make	Depth	Type	Size	Qty	Make
Guide Shoe					Packer					Top Plug	9.625	1	
Float Shoe					Bridge Plug					Bottom Plug			
Float Collar					Retainer					SSR plug set			
Insert Float										Plug Container	9.625	1	
Stage Tool										Centralizers			

Gelling Agt	Conc	Surfactant	Conc	Acid Type	Qty	Conc	%
Treatment Fld	Conc	Inhibitor	Conc	Sand Type	Size	Qty	

Stage/Plug #: 1									
Fluid #	Stage Type	Fluid Name	Qty	Qty uom	Mixing Density lbm/gal	Yield ft3/sk	Mix Fluid Gal/sk	Rate bbl/min	Total Mix Fluid Gal/sk

Stage/Plug #: 1									
Fluid #	Stage Type	Fluid Name	Qty	Qty uom	Mixing Density lbm/gal	Yield ft ³ /sk	Mix Fluid Gal/sk	Rate bbl/min	Total Mix Fluid Gal/sk
1	WATER SPACER		20	bbl	.	.0	.0	.0	
2	Lead Cement	VERSACEM (TM) SYSTEM (452010)	120	sacks	12.3	2.38	13.75		
3	Tail Cement	SWIFTCEM (TM) SYSTEM (452990)	120	sacks	14.2	1.43	6.88		6.88
6.88 Gal		FRESH WATER							
4	DISPLACEMENT		59	bbl	.	.0	.0	.0	
Calculated Values		Pressures		Volumes					
Displacement	59	Shut In: Instant		Lost Returns		Cement Slurry	81.5	Pad	
Top Of Cement	SURFACE	5 Min		Cement Returns	21	Actual Displacement	59	Treatment	
Frac Gradient		15 Min		Spacers	20	Load and Breakdown		Total Job	
Rates									
Circulating		Mixing	6	Displacement	6	Avg. Job		6	
Cement Left In Pipe	Amount	44.65 ft	Reason	Shoe Joint					
Frac Ring # 1 @	ID	Frac ring # 2 @	ID	Frac Ring # 3 @	ID	Frac Ring # 4 @	ID		
The Information Stated Herein Is Correct				Customer Representative Signature					

The Road to Excellence Starts with Safety

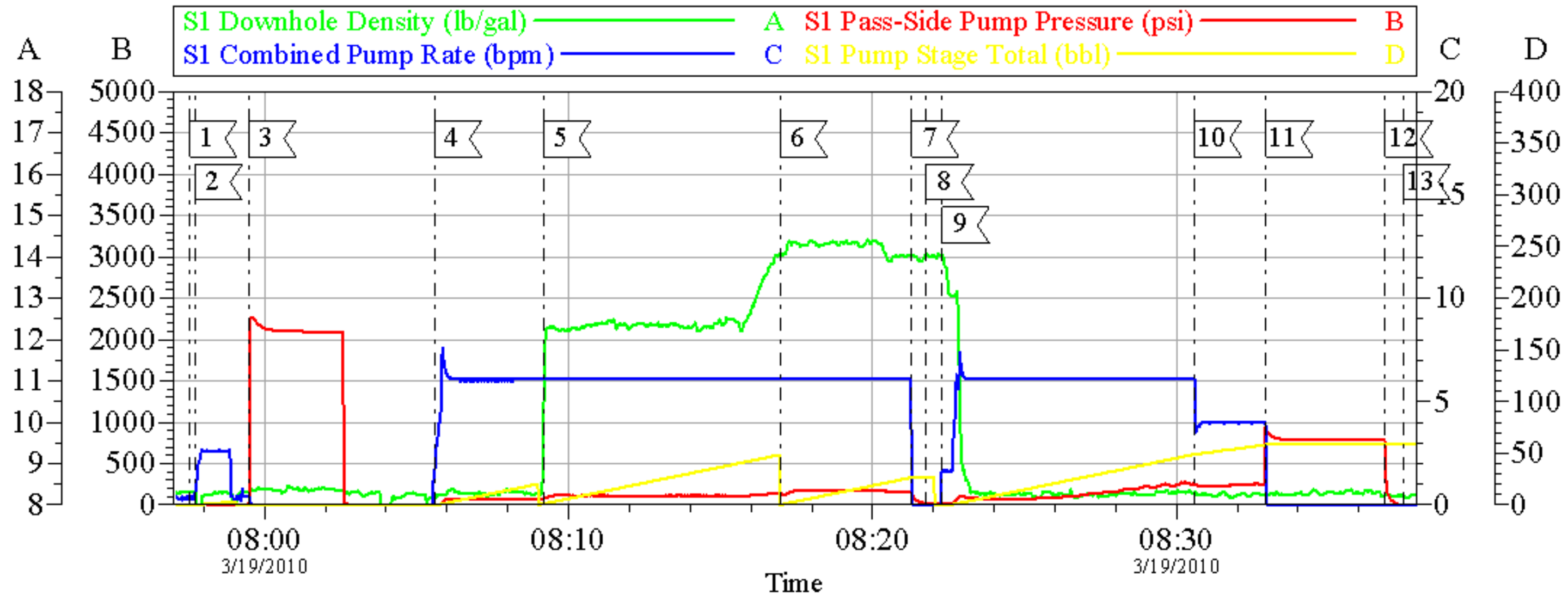
Sold To #: 343492	Ship To #: 2774166	Quote #:	Sales Order #: 7246778
Customer: BILL BARRETT CORPORATION E-BILL		Customer Rep: South, Jodi	
Well Name: GGU FED	Well #: 11C-33-691	API/UWI #:	
Field: PICEANCE	City (SAP): SILT	County/Parish: Garfield	State: Colorado
Legal Description:			
Lat: N 0 deg. OR N 0 deg. 0 min. 0 secs.		Long: E 0 deg. OR E 0 deg. 0 min. 0 secs.	
Contractor: BARRETT		Rig/Platform Name/Num: PETRO PLUS	
Job Purpose: Cement Surface Casing			Ticket Amount:
Well Type: Development Well		Job Type: Cement Surface Casing	
Sales Person: METLI, MARSHALL		Srvc Supervisor: Rockert, Christopher	MBU ID Emp #: 332914

Activity Description	Date/Time	Cht #	Rate bbl/min	Volume bbl		Pressure psig		Comments
				Stage	Total	Tubing	Casing	
Rig-Up Equipment	03/19/2010 07:30							TD-830/ TP-808.45/ SHOE-44.65/ HOLE-12 3/8
Pre-Job Safety Meeting	03/19/2010 07:45							HEAD WAS NOT SECURED DOWN FOR JOB
Start Job	03/19/2010 07:57							OFFLINE CEMENT JOB. DRILLED WITH AIR
Pump Water	03/19/2010 07:57		2		2		4.0	WATER AHEAD TO FILL LINES
Test Lines	03/19/2010 07:59		1				2170.0	NO LEAKS
Pump Spacer	03/19/2010 08:05		6		20		77.0	FRESH WATER
Pump Lead Cement	03/19/2010 08:09		6		50.9		122.0	120 SKS/ 2.38 YIELD/ 13.75 GAL-SK/ 12.3 PPG
Pump Tail Cement	03/19/2010 08:16		6		30.6		151.0	120 SKS/ 1.43 YIELD/ 6.88 GAL-SK/ 14.2 PPG
Shutdown	03/19/2010 08:21							
Drop Top Plug	03/19/2010 08:21							PLUG AWAY
Pump Displacement	03/19/2010 08:22		6				92.0	FRESH WATER. SAW RETURNS AS SOON AS WE STARTED DISPLACEMENT
Other	03/19/2010 08:27		6		38			21 BBLS TO SURFACE
Slow Rate	03/19/2010 08:30		4		49		238.0	
Bump Plug	03/19/2010 08:32		4		59		280.0	PRESSURED UP TO 813 PSI ON FLOATS
Check Floats	03/19/2010 08:36							FLOATS HELD. 1/4 BBL BACK

Activity Description	Date/Time	Cht #	Rate bbl/ min	Volume bbl		Pressure psig		Comments
				Stage	Total	Tubing	Casing	
End Job	03/19/2010 08:37							
Rig-Down Equipment	03/19/2010 08:45							RELIEF CREW COMING OUT FOR NEXT JOB. PUMP HAD TO GO TO ANOTHER LOCATION TO CATCH A JOB.
Depart Location for Service Center or Other Site	03/19/2010 09:30							THANK YOU FOR USING HALLIBURTON CHRIS ROCKERT AND CREW

BILL BARRETT

9 5/8 SURFACE



Local Event Log			
1	START JOB	07:57:32	2
3	TEST LINES	07:59:29	4
5	PUMP LEAD CEMENT	08:09:11	6
7	SHUTDOWN	08:21:17	8
9	PUMP DISPLACEMENT	08:22:17	10
11	BUMP PLUG	08:32:56	12
13	END JOB	08:37:27	

Customer:	BILL BARRETT	Job Date:	19-Mar-2010	Sales Order #:	7246778
Well Description:	11C-33-691	Job Type:	9 5/8 SURFACE	ADC Used:	YES
Customer Representative:	JODI SOUTH	Cement Supervisor:	CHRIS ROCKERT	Elite #:	8

OptiCem v6.4.6
19-Mar-10 08:48