

**HALLIBURTON**

---

**XTO ENERGY INC EBUSINESS**

---

**Tiffany 2 #3**

**San Juan County , New Mexico**

**Cement Surface Casing**

**31-Oct-2010**

**Post Job Documents**

# HALLIBURTON

## Cementing Job Summary

## ***The Road to Excellence Starts with Safety***

Sold To #: 353810			Ship To #: 353810			Quote #:			Sales Order #: 7742571				
Customer: XTO ENERGY INC EBUSINESS						Customer Rep: Niederhofer, Justin							
Well Name: Tiffany				Well #: 2 #3			API/UWI #:						
Field:		City (SAP): FORT WORTH			County/Parish: San Juan			State: New Mexico					
Legal Description: Section 10 Township 30N Range 13W													
Contractor: AWS				Rig/Platform Name/Num: AWS 507									
Job Purpose: Cement Surface Casing													
Well Type: Development Well				Job Type: Cement Surface Casing									
Sales Person: MASON, KYLE				Srvc Supervisor: WOOD, BRANDON			MBU ID Emp #: 412753						
Job Personnel													
HES Emp Name		Exp Hrs	Emp #	HES Emp Name		Exp Hrs	Emp #	HES Emp Name		Exp Hrs	Emp #		
ATKINSON, TOM Charles		6	479810	DOBBS, CHAD A		6	275043	MARTIN, EHLER Dean		6	458474		
WOOD, BRANDON M		6	412753										
Equipment													
HES Unit #		Distance-1 way	HES Unit #		Distance-1 way	HES Unit #		Distance-1 way	HES Unit #		Distance-1 way		
10001398C		59 mile	10948692		59 mile	11223557		59 mile	11338219		59 mile		
Job Hours													
Date	On Location Hours	Operating Hours	Date	On Location Hours	Operating Hours	Date	On Location Hours	Operating Hours					
TOTAL			Total is the sum of each column separately										
Job						Job Times							
Formation Name						Date		Time	Time Zone				
Formation Depth (MD)		Top	Bottom		Called Out		31 - Oct - 2010	01:30	MST				
Form Type		BHST		On Location		31 - Oct - 2010	05:00	MST					
Job depth MD		330.2 ft		Job Depth TVD		285.8 ft	Job Started	31 - Oct - 2010	00:00	MST			
Water Depth		Wk Ht Above Floor		4. ft		Job Completed	31 - Oct - 2010	00:00	MST				
Perforation Depth (MD)		From	To		Departed Loc		31 - Oct - 2010	00:00	MST				
Well Data													
Description	New / Used	Max pressure psig	Size in	ID in	Weight lbm/ft	Thread	Grade	Top MD ft	Bottom MD ft	Top TVD ft	Bottom TVD ft		
12 1/4" Open Hole				12.25					300.				
8 5/8" Surface Casing	Unknown		8.625	8.097	24.		J-55		300.				
Sales/Rental/3 <sup>rd</sup> Party (HES)													
Description						Qty	Qty uom	Depth	Supplier				
PLUG,CMTG,TOP,8 5/8,HWE,7.20 MIN/8.09 MA						1	EA						
SUGAR, GRANULATED, IMPERIAL						100	LB						
Tools and Accessories													
Type	Size	Qty	Make	Depth	Type	Size	Qty	Make	Depth	Type	Size	Qty	Make
Guide Shoe					Packer					Top Plug			
Float Shoe					Bridge Plug					Bottom Plug			
Float Collar					Retainer					SSR plug set			
Insert Float										Plug Container			
Stage Tool										Centralizers			
Miscellaneous Materials													
Gelling Agt			Conc		Surfactant		Conc		Acid Type		Qty		Conc %
Treatment Fld			Conc		Inhibitor		Conc		Sand Type		Size		Qty

Fluid Data									
Stage/Plug #: 1									
Fluid #	Stage Type	Fluid Name	Qty	Qty uom	Mixing Density lbm/gal	Yield ft <sup>3</sup> /sk	Mix Fluid Gal/sk	Rate bbl/min	Total Mix Fluid Gal/sk
1	Spacer		20.00	bbl	8.33	.0	.0	.0	
2	Primary Cement	CMT - PREMIUM - CLASS G, 94 LB SK (100003685)	215.0	sacks	15.8	1.17	5.01		5.01
	94 lbm	CMT - PREMIUM - CLASS G REG OR TYPE V, BULK (100003685)							
	0.125 lbm	POLY-E-FLAKE (101216940)							
	3 %	CALCIUM CHLORIDE - HI TEST PELLET (100005053)							
	5.013 Gal	FRESH WATER							
3	Displacement			bbl	8.33	.0	.0	.0	
Calculated Values		Pressures		Volumes					
Displacement	18.2	Shut In: Instant		Lost Returns	NO	Cement Slurry	44.8	Pad	
Top Of Cement	SURFACE	5 Min		Cement Returns	12	Actual Displacement	18.5	Treatment	
Frac Gradient		15 Min		Spacers	20	Load and Breakdown		Total Job	
Rates									
Circulating	2	Mixing		4	Displacement	3	Avg. Job		3
Cement Left In Pipe	Amount	44.4 ft	Reason	Shoe Joint					
Frac Ring # 1 @	ID		Frac ring # 2 @	ID		Frac Ring # 3 @	ID		Frac Ring # 4 @
The Information Stated Herein Is Correct				Customer Representative Signature					

*The Road to Excellence Starts with Safety*

Sold To #: 353810		Ship To #: 353810		Quote #:		Sales Order #: 7742571	
Customer: XTO ENERGY INC EBUSINESS				Customer Rep: Niederhofer, Justin			
Well Name: Tiffany			Well #: 2 #3			API/UWI #:	
Field:		City (SAP): FORT WORTH		County/Parish: San Juan			State: New Mexico
Legal Description: Section 10 Township 30N Range 13W							
Lat:				Long:			
Contractor: AWS			Rig/Platform Name/Num: AWS 507				
Job Purpose: Cement Surface Casing						Ticket Amount:	
Well Type: Development Well			Job Type: Cement Surface Casing				
Sales Person: MASON, KYLE			Srvc Supervisor: WOOD, BRANDON			MBU ID Emp #: 412753	

Activity Description	Date/Time	Cht #	Rate bbl/min	Volume bbl		Pressure psig		Comments
				Stage	Total	Tubing	Casing	
Call Out	10/31/2010 01:30							
Depart Yard Safety Meeting	10/31/2010 03:25							SAFETY MEETING INVOLVING THE CMT CREW
Crew Leave Yard	10/31/2010 03:30							
Arrive At Loc	10/31/2010 05:30							1- F-450 10829466, 1- RED TIGER PUMP TRUCK 11223557, 1- 660 BULK TRUCK TRAILERS 10025104, 10,398
Assessment Of Location Safety Meeting	10/31/2010 05:35							ASSESSMENT OF LOCATION INVOLVING THE CMT CREW
Pre-Rig Up Safety Meeting	10/31/2010 08:25							SAFETY MEETING INVOLVING THE ENTIRE CMT/ RIG CREW
Rig-Up Equipment	10/31/2010 08:30							
Pre-Job Safety Meeting	10/31/2010 09:15							SAFETY MEETING INVOLVING EVERYONE ON LOCATION
Start Job	10/31/2010 09:25							TD 330 FT, TP 316 FT, FC 282 FT, SJ 45 FT, 8 5/8 24 # J-55 CSG, 12 1/4 OH, CALCULATED PSI TO LIFT PIPE OUT OF HOLE
Test Lines	10/31/2010 09:28		0.5		2		1400.0	PRESSURE TEST GOOD TO 1400 PSI

Activity Description	Date/Time	Cht #	Rate bbl/min	Volume bbl		Pressure psig		Comments
				Stage	Total	Tubing	Casing	
Pump Spacer 1	10/31/2010 09:31		2		20		165.0	PUMP 20 BBL FRESH WATER SPACER
Pump Cement	10/31/2010 09:39		4		44.8		205.0	215 SKS, 1.17 YLD, 5.01 GAL H2O/SK, 44.8 BBLS @ 15.8 #, 25.6 BBLS H2O REQ
Shutdown	10/31/2010 09:50							SHUT DOWN TO DROP TOP PLUG
Drop Top Plug	10/31/2010 09:51							TATTLE TAIL INDICATED PLUG LEFT THE PLUG CONTAINER
Pump Displacement	10/31/2010 09:51		4		18.2		200.0	CALCULATED 18.2 BBLS DISPLACEMENT, ACTUALLY PUMPED 18.5 BBLS ON TANKS MARK TO MARK TO BUMP PLUG
Cement Returns to Surface	10/31/2010 09:53				12			CALCULATED SHOULD CIRCULATE 17.7 BBLS CEMENT RETURNS TO SURFACE, ACTUALLY CIRCULATED 12 BBLS
Slow Rate	10/31/2010 09:55		2				200.0	SLOW RATE 2 BBL MIN THE LAST 3 BBLS OF DISPLACEMENT TO LAND THE PLUG
Bump Plug	10/31/2010 09:59		2				212.0	CALCULATED 111 PSI DIFFERENTIAL WHEN PLUG LANDS, PLUG BUMPED @ 212 PSI
Shut In Well	10/31/2010 10:03						320.0	PRESSURED UP TO 320 PSI, RELEASED PRESSURE TO 200 PSI, SHUT IN WELL.
End Job	10/31/2010 10:05							GOOD CIRCULATION THROUGHOUT THE ENTIRE CMT JOB, NO PIPE MOVEMENT,
Pre-Rig Down Safety Meeting	10/31/2010 10:06							SAFETY MEETING INVOLVING THE CMT/RIG CREW
Rig-Down Equipment	10/31/2010 10:10							
Safety Meeting - Departing Location	10/31/2010 10:55							SAFETY MEETING INVOLVING THE CMT CREW

# HALLIBURTON

## *Cementing Job Log*

Activity Description	Date/Time	Cht #	Rate bbl/ min	Volume bbl		Pressure psig		Comments
				Stage	Total	Tubing	Casing	
Depart Location for Service Center or Other Site	10/31/2010 11:00							THANK YOU FOR USING HALLIBURTON, BRANDON WOOD AND CREW

Sold To # : 353810

Ship To # : 353810

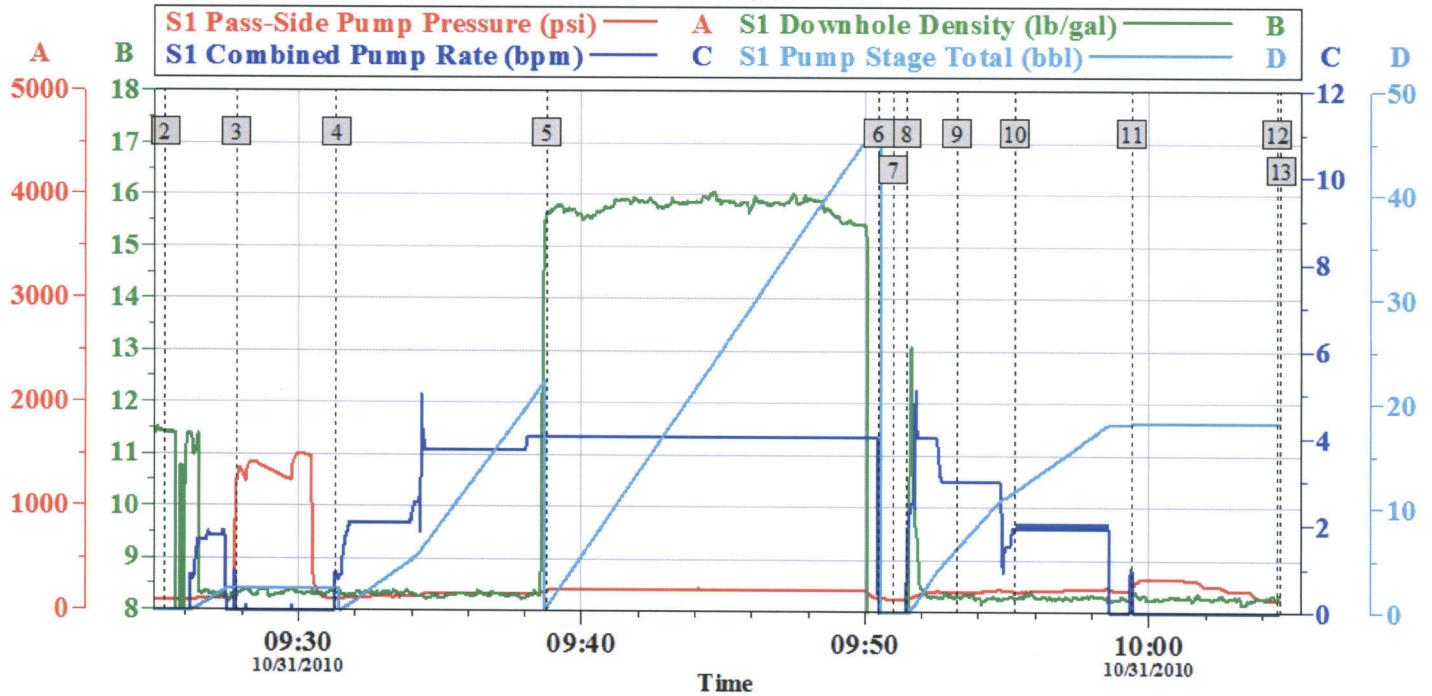
Quote # :

Sales Order # : 7742571

SUMMIT Version: 7.20.130

Monday, November 01, 2010 10:38:00

### XTO TIFFANY 2 # 3, SURFACE



#### Global Event Log

2 Starting Job	09:25:16	3 Test Lines	09:27:48	4 Pump Spacer	09:31:19
5 Pump Cement	09:38:45	6 Shutdown	09:50:29	7 Drop Plug	09:51:00
8 Pump Displacement	09:51:27	9 Cement Returns to Surface	09:53:14	10 Slow Rate	09:55:16
11 Bump Plug	09:59:23	12 End Job	10:04:30	13 Ending Job	10:04:39

Customer: XTO	Job Date: 31-Oct-2010	Sales Order #: 7742571
Well Description: TIFFANY	Job type: SURFACE	ADC Used: YES
Customer Rep: DENNIS ELROD	Service Supervisor: BRANDON WOOD	Operator/ Pump: CHAD DOBBS, 11223557

OptiCem v6.3.4  
31-Oct-10 10:22

Sold To #: 353810

Ship To #: 353810

Quote #:

Sales Order #:

7742571

SUMMIT Version: 7.20.130

Monday, November 01, 2010 10:38:00