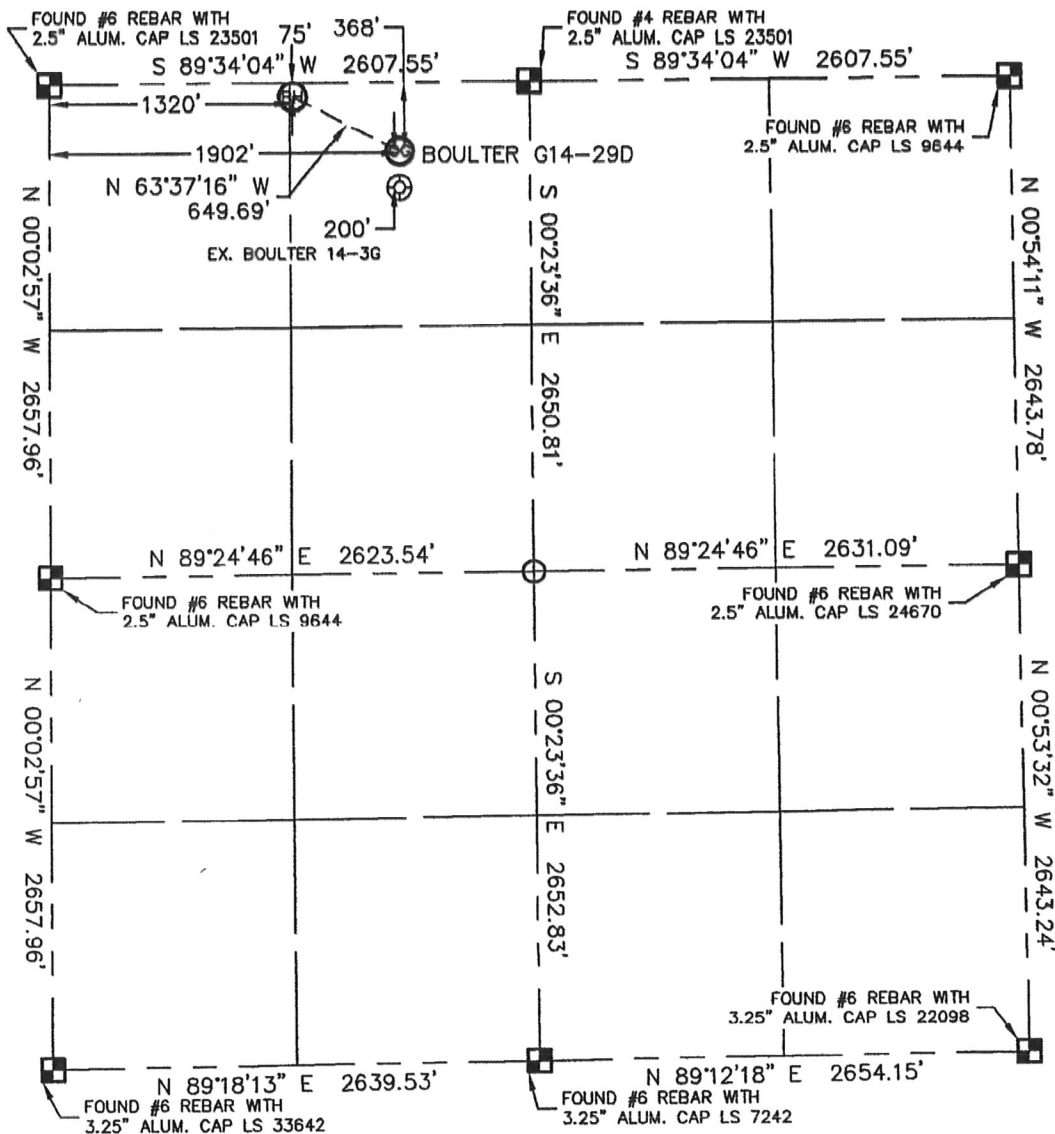


WELL LOCATION CERTIFICATE

THIS MAP DOES NOT REPRESENT A BOUNDARY SURVEY

SECTION: 14
TOWNSHIP: 4N
RANGE: 65W



In accordance with a request from Mike Rodine with Noble Energy Inc. Lat40°, LLC has determined the surface location of the BOULTER G14-29D to be 368' from the NORTH line and 1902' from the WEST line and the bottom hole to be 75' from the NORTH line and 1320' from the WEST line as measured at right angles from the section line of Section 14, Township 4 North, Range 65 West of the Sixth Principal Meridian, County of Weld, State of Colorado.

I hereby state that this Well Location Certificate was prepared by me, or under my direct supervision, that the fieldwork was completed on 8/23/10, for and on behalf of Noble Energy Inc. That this is not a Land Survey Plat or an Improvement Survey Plat, and that it is not to be relied upon for establishment of fence, building, or other future improvement lines.

NOTE:

- 1) Bearings shown are Grid Bearings of the Colorado State Plane Coordinate System, North Zone, North American Datum 1983/2007. The lineal dimensions as contained herein are based upon the "U.S. Survey Foot."
- 2) Ground elevations are based on an observed GPS elevation (NAVD 1988 DATUM).
- 3) NEAREST EXISTING WELL: BOULTER 14-3G 200'
- 4) IMPROVEMENTS: See LOCATION DRAWING exhibit for all visible improvements within 400' of disturbed area.
- 5) SURFACE USE: RANGELAND
- 6) INSTRUMENT OPERATOR: BRIAN BRINKMAN

SURFACE LOCATION
LATITUDE: 40.31874°N
LONGITUDE: 104.63278°W
PDOP: 2.2
ELEV: 4694
1/4, 1/4: NE1/4NW1/4
NEAREST PROPERTY LINE: 242' EAST

BOTTOM HOLE
LATITUDE: 40.31955°N
LONGITUDE: 104.63485°W



Brian T. Brinkman—On behalf of Lat40°, LLC
Colorado Licensed Professional
Land Surveyor No. 38175

PROJECT#: 2010085

LEGEND

- = ALIQUOT MONUMENT AS DESCRIBED
- = CALCULATED POSITION

NOTE

According to Colorado law, you must commence any legal action based upon any defect in this W.L.C. within three years after you discover such defect. In no event, may any action based upon any defect in this survey be commenced more than ten years after the date of the certificate shown hereon. (13-80-105 C.R.S.)

Lat40°, LLC

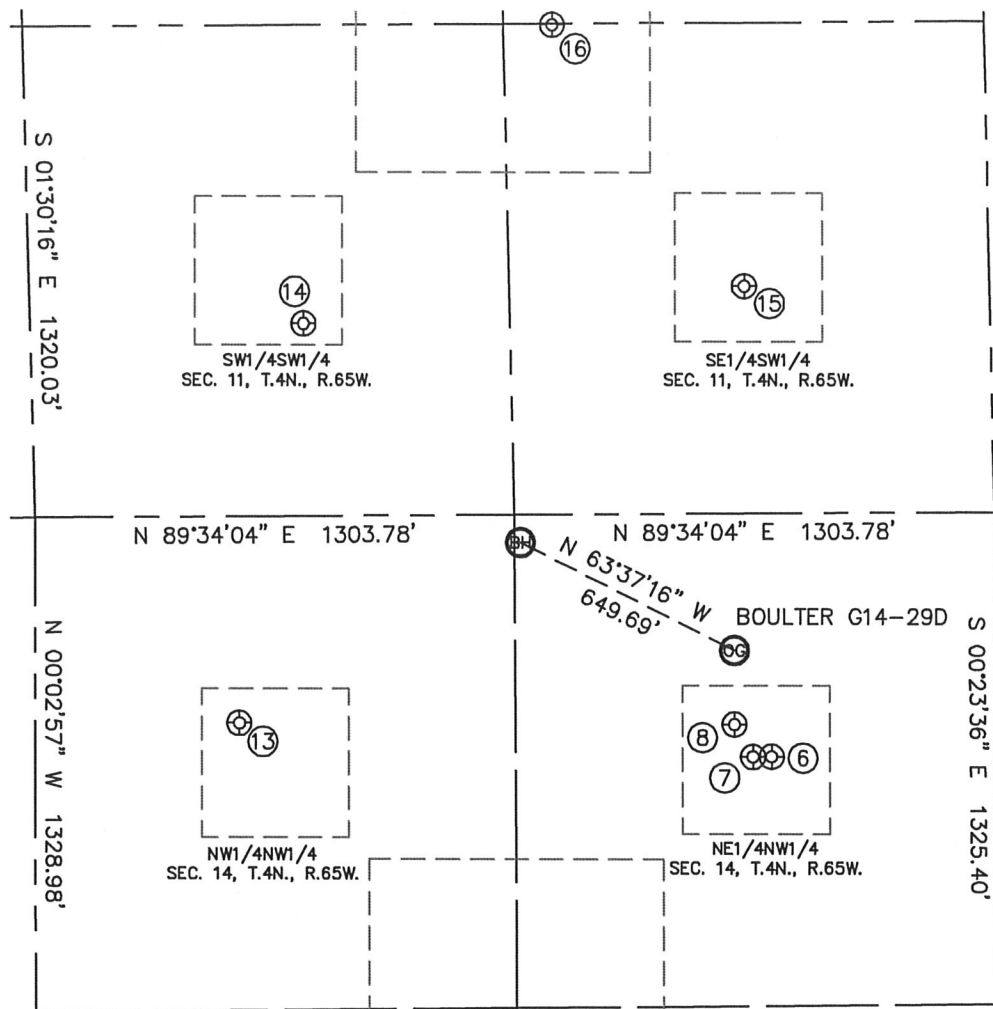
1635 Foxtrail Drive, Suite 325

Loveland, CO 80538

SITE SKETCH

BOULTER G14-29D

SECTION: 14
TOWNSHIP: 4N
RANGE: 65W



⑥

WORRIES 21-14 DIR
NE1/4NW1/4
655' FNL
2002' FWL
LAT-40.31795°N
LONG-104.63243°W
PDOP: 1.6
ELEV: 4693

⑦

VICTOR G14-3
NE1/4NW1/4
655' FNL
1951' FWL
LAT-40.31795°N
LONG-104.63261°W
PDOP: 1.7
ELEV: 4693

⑧

BOULTER 14-3G
NE1/4NW1/4
568' FNL
1901' FWL
LAT-40.31819°N
LONG-104.63278°W
PDOP: 1.2
ELEV: 4694

⑬

BOULTER 14-4G
NW1/4NW1/4
556' FNL
555' FWL
LAT-40.31823°N
LONG-104.63761°W
PDOP: 1.2
ELEV: 4684

⑭

BOULTER 11-2
SW1/4SW1/4
517' FSL
744' FWL
LAT-40.32118°N
LONG-104.63695°W
PDOP: 1.5
ELEV: 4681

⑮

HUWA 11-1
SE1/4SW1/4
611' FSL
1945' FWL
LAT-40.32143°N
LONG-104.63264°W
PDOP: 1.2
ELEV: 4691

⑯

HUWA 11-35
SE1/4SW1/4
1317' FSL
1441' FWL
LAT-40.32337°N
LONG-104.63450°W
PDOP: 2.4
ELEV: 4682

