
BLACK HILLS EXPLORATION & PROD-EBUS

**Jaques Ute 34-14
IGNACIO / BLANCO
La Plata County , Colorado**

Cement Surface Casing
22-Jul-2010

Job Site Documents



Cementing Job Summary

The Road to Excellence Starts with Safety

Sold To #: 359739			Ship To #: 359739			Quote #:			Sales Order #: 7515834										
Customer: BLACK HILLS EXPLORATION & PROD-EBUS						Customer Rep: Parrent, Allen													
Well Name: Jaques Ute				Well #: 34-14				API/UWI #:											
Field: IGNACIO / BLANCO			City (SAP): GOLDEN		County/Parish: La Plata			State: Colorado											
Contractor: AWS				Rig/Platform Name/Num: AWS 507															
Job Purpose: Cement Surface Casing																			
Well Type: Development Well				Job Type: Cement Surface Casing															
Sales Person: MASON, KYLE				Srvc Supervisor: DOBBS, GARY			MBU ID Emp #: 122012												
Job Personnel																			
HES Emp Name		Exp Hrs	Emp #	HES Emp Name		Exp Hrs	Emp #	HES Emp Name		Exp Hrs	Emp #								
BRYANT, CHARLES		7.5	461552	DOBBS, GARY D		7.5	122012	GONZALEZ, ARMANDO		7.5	452786								
Equipment																			
HES Unit #		Distance-1 way		HES Unit #		Distance-1 way		HES Unit #		Distance-1 way									
Job Hours																			
Date		On Location Hours		Operating Hours		Date		On Location Hours		Operating Hours									
7/22/10		7.5		3.5															
TOTAL							Total is the sum of each column separately												
Job						Job Times													
Formation Name								Date		Time		Time Zone							
Formation Depth (MD)		Top		Bottom		Called Out		22 - Jul - 2010		01:00		MST							
Form Type				BHST		On Location		22 - Jul - 2010		02:00		MST							
Job depth MD		450. ft		Job Depth TVD		Job Started		22 - Jul - 2010		07:33		MST							
Water Depth				Wk Ht Above Floor		Job Completed		22 - Jul - 2010		08:08		MST							
Perforation Depth (MD)		From		To		Departed Loc		22 - Jul - 2010		09:30		MST							
Well Data																			
Description		New / Used	Max pressure psig	Size in	ID in	Weight lbm/ft	Thread		Grade	Top MD ft	Bottom MD ft	Top TVD ft	Bottom TVD ft						
12.25" Open Hole					12.25					.	450.								
8.625" Surface Casing		Unknown		8.625	7.921	32.				.	450.								
Sales/Rental/3 rd Party (HES)																			
Description								Qty	Qty uom	Depth	Supplier								
PLUG,CMTG,TOP,8 5/8,HWE,7.20 MIN/8.09 MA								1	EA										
SUGAR, GRANULATED, IMPERIAL								75	LB										
Tools and Accessories																			
Type		Size	Qty	Make	Depth	Type		Size	Qty	Make	Depth	Type		Size	Qty	Make			
Guide Shoe						Packer						Top Plug							
Float Shoe						Bridge Plug						Bottom Plug							
Float Collar						Retainer						SSR plug set							
Insert Float												Plug Container							
Stage Tool												Centralizers							
Miscellaneous Materials																			
Gelling Agt				Conc		Surfactant				Conc		Acid Type				Qty		Conc	%
Treatment Fld				Conc		Inhibitor				Conc		Sand Type				Size		Qty	

Fluid Data										
Stage/Plug #: 1										
Fluid #	Stage Type	Fluid Name	Qty	Qty uom	Mixing Density lbm/gal	Yield ft ³ /sk	Mix Fluid Gal/sk	Rate bbl/min	Total Mix Fluid Gal/sk	
1	H2O Spacer		10.00	bbl	8.33	.0	.0	.0		
2	Surface Cement	CMT - PREMIUM - CLASS G, 94 LB SK (100003685)	250.0	sacks	15.8	1.17	5.01		5.01	
	94 lbm	CMT - PREMIUM - CLASS G REG OR TYPE V, BULK (100003685)								
	3 %	CALCIUM CHLORIDE - HI TEST PELLET (100005053)								
	0.125 lbm	POLY-E-FLAKE (101216940)								
	5.013 Gal	FRESH WATER								
3	H2O Displacement		26.5	bbl	8.33	.0	.0	.0		
Calculated Values		Pressures		Volumes						
Displacement	26.5	Shut In: Instant		Lost Returns		Cement Slurry	52	Pad		
Top Of Cement	0	5 Min		Cement Returns	12	Actual Displacement	26.5	Treatment		
Frac Gradient		15 Min		Spacers	10	Load and Breakdown		Total Job		
Rates										
Circulating	4	Mixing	4	Displacement	4	Avg. Job	4			
Cement Left In Pipe	Amount	42 ft	Reason	Shoe Joint						
Frac Ring # 1 @	ID	Frac ring # 2 @	ID	Frac Ring # 3 @	ID	Frac Ring # 4 @	ID			
The Information Stated Herein Is Correct				Customer Representative Signature						

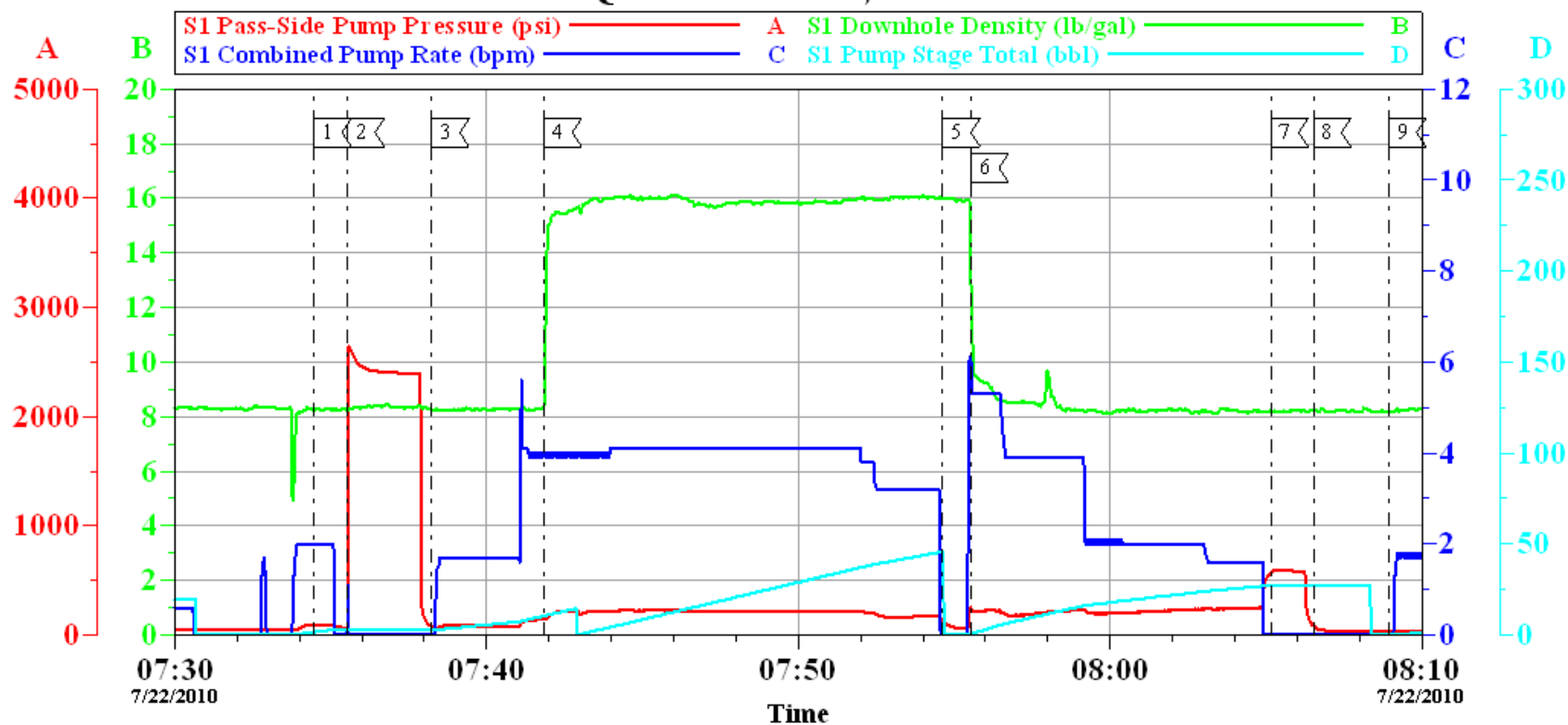
The Road to Excellence Starts with Safety

Sold To #: 359739	Ship To #: 359739	Quote #:	Sales Order #: 7515834
Customer: BLACK HILLS EXPLORATION & PROD-EBUS		Customer Rep: Parrent, Allen	
Well Name: Jaques Ute		Well #: 34-14	API/UWI #:
Field: IGNACIO / BLANCO	City (SAP): GOLDEN	County/Parish: La Plata	State: Colorado
Legal Description:			
Lat:		Long:	
Contractor: AWS		Rig/Platform Name/Num: AWS 507	
Job Purpose: Cement Surface Casing			Ticket Amount:
Well Type: Development Well		Job Type: Cement Surface Casing	
Sales Person: MASON, KYLE		Srv Supervisor: DOBBS, GARY	MBU ID Emp #: 122012

Activity Description	Date/Time	Cht #	Rate bbl/min	Volume bbl		Pressure psig		Comments
				Stage	Total	Tubing	Casing	
Pre-Convoy Safety Meeting	07/22/2010 00:30							
Assessment Of Location Safety Meeting	07/22/2010 02:00							
Pre-Rig Up Safety Meeting	07/22/2010 05:45							
Rig-Up Equipment	07/22/2010 06:00							RIG UP PUMP TRUCK, 1 BULK TRUCK & PICK-UP
Pre-Job Safety Meeting	07/22/2010 07:15							
Start Job	07/22/2010 07:33							
Test Lines	07/22/2010 07:35					2621.0		
Pump Spacer 1	07/22/2010 07:38		2	10			155.0	WATER
Pump Cement	07/22/2010 07:41		4	52			226.0	250 SKS OF TYPE G CEMENT MIXED @ 15.8# 1.17 YEILD 5.01 GPS FRESH WATER
Drop Top Plug	07/22/2010 07:54							
Pump Displacement	07/22/2010 07:55		4	16.5			200.0	WATER
Bump Plug	07/22/2010 08:04		2	10	26.5			
Check Floats	07/22/2010 08:06							FLOATS HELD
End Job	07/22/2010 08:08							

BLACK HILLS

JAQUES UTE 34-14, SURFACE



Local Event Log					
Intersection		SPPP		Intersection	
1	START JOB	07:34:28	93.00	2	TEST LINES
3	PUMP SPACER 1	07:38:15	76.86	4	PUMP CEMENT
5	DROP PLUG	07:54:38	125.7	6	PUMP DISPLACEMENT
7	BUMP PLUG	08:05:10	574.1	8	CHECK FLOATS
9	END JOB	08:08:56	36.00		

Customer: BLACK HILLS	Job Date: 22-Jul-2010	Sales Order #: 7515834
Well Description: JAQUES UTE #34-14	Job type: SURFACE	ADC Used: YES
Customer Rep: PHIL HENSON	Service Supervisor: DONNY DOBBS	Operator/ Pump: ARMANDO / 11324578

OptiCem v6.4.1
22-Jul-10 08:32