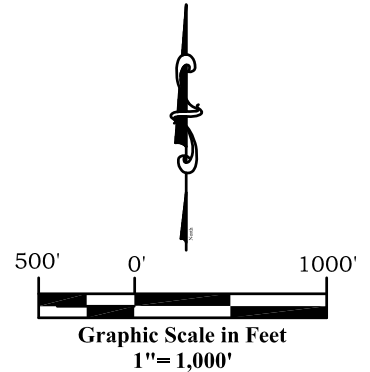


**As Drilled  
Well Location Plat  
CSF 32C-09-07-91  
Section 9, Township 7  
South, Range 91 West**

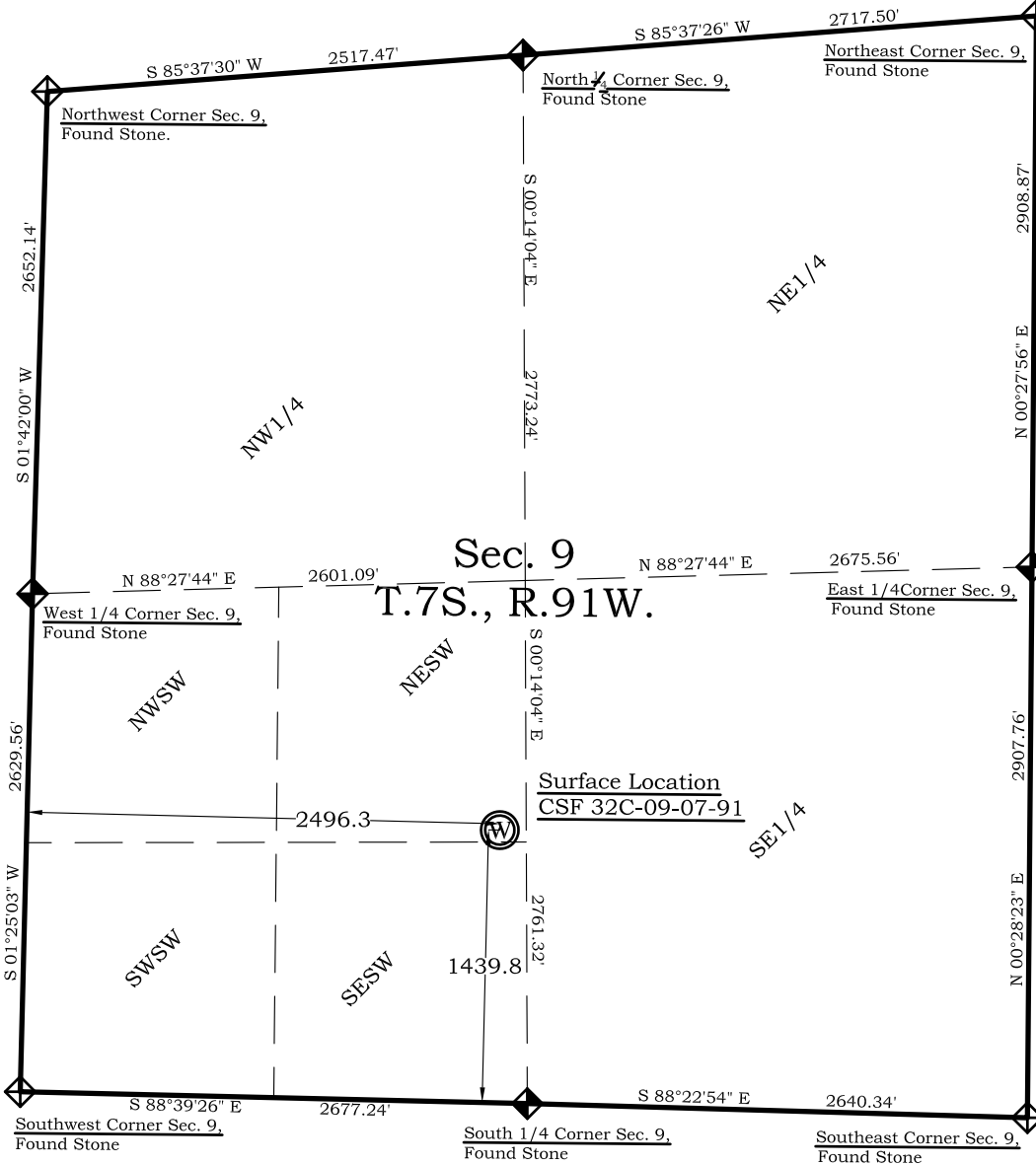


**Legend**

- ◈ - Field Surveyed Section Corner
- ◈ - Field Surveyed Quarter Corner
- ⊙ - Calculated Section Corner Location
- ⊕ - Field Surveyed 1/6 Corner

**CSF 32C-09-07-91  
As Drilled Surface Location**

1440' FSL  
2496' FWL  
Gnd El= 6806.2  
**NAD83**  
Lat: 39.458513047°N  
Long: 107.558905031°W  
**NAD27**  
Lat: 39.458532366°N  
Long: 107.558294053°W  
UTM 13 NORTH  
**NAD 1983**  
Northing  
14339819.738  
Easting  
918117.926



**Prepared For Antero Resources:  
As Drilled CSF 32C-09-07-91 Well Situate in The SW1/4  
Section 9, Township 7 South, Range 91 West of the 6th.  
Principal Meridian, County of Garfield, State of  
Colorado.**

**SURVEYOR'S CERTIFICATE**

I, SCOTT E. AIBNER, A REGISTERED LAND SURVEYOR, LICENSED UNDER THE LAWS OF THE STATE OF COLORADO DO HEREBY CERTIFY THAT THE SURVEY SHOWN HEREON WAS PREPARED BY RIVER VALLEY SURVEY, INC., FOR ANTERO RESOURCES, BY ME OR UNDER MY DIRECT SUPERVISION AND HAS BEEN STAKED ON THE GROUND AS SHOWN ON THE PLAT AND THAT THIS PLAT IS A TRUE REPRESENTATION THEREOF.

BY:   
SCOTT E. AIBNER, COLORADO REG. NO. 31143

**Notes:**

1. LATITUDE AND LONGITUDE COORDINATES ARE DIFFERENTIALLY CORRECTED AND BASED ON PUBLISHED NGS CONTROL STATION "WDP-5". SYSTEM: UTM ZONE: 13 NORTH DATUM: NAD 1983 (CONUS)
2. ELEVATIONS ARE BASED ON NAVD OF 1983.
3. ALL BOTTOM AND TOP HOLE LOCATIONS ARE MEASURED 90 DEGREES FROM SECTION LINE.
4. USGS QUADRANGLE MAP "GIBSON GULCH".
5. CURRENT SURFACE LAND USE: OPEN RANGE LAND.
6. PDOP AT THE TIME OF LOCATION OF SURFACE WELL = 2.5



**River Valley Survey, Inc.**  
110 East 3rd. Street, Suite 213  
Rifle, Colorado 81650  
Ph: 970-379-7846

**Project: CASTLE SPRINGS FEDERAL E PAD**

**Field Date: 11-03-10**

**Date: 11-22-10**

**Scale: 1"= 1000'**

**Sheet: 1 of 1**

**A Drilled Well Location Plat  
Prepared For Antero Resources**

**Situate In:**  
SW1/4 Section 9, T7S., R. 91 W. of the  
6th P.M., Garfield County, Colorado

