

ENCANA OIL & GAS (USA) INC. - EBUS
DO NOT MAIL-3601 N STAGECOACH RD
LONGMONT, Colorado

Sears 22-26

ENSIGN #122

Post Job Summary

Cement Surface Casing

Prepared for: Kevin Brakovec
Date Prepared: 5/17/2010
Version: 1

Service Supervisor: Lou Patterson

Submitted by: Wes Aaron

HALLIBURTON

HALLIBURTON

Service Supervisor Reports

Job Log

Date/Time	Chart #	Activity Code	Pump Rate	Cum Vol	Pump		Pressure (psig)	Comments
05/10/2010 22:00		Arrive at Location from Service Center						
05/11/2010 00:15		Pre-Rig Up Safety Meeting						
05/11/2010 00:30		Rig-Up Equipment						
05/11/2010 01:40		Pre-Job Safety Meeting						
05/11/2010 01:57		Start Job						
05/11/2010 01:58		Test Lines						3000 PSI
05/11/2010 01:59		Pump Spacer	4	20			33.0	20 BBL RED WATER
05/11/2010 02:03		Pump Cement	5	118.3			65.0	440 SKS 118.3 BBL SWIFTCM @ 14.2 PPG
05/11/2010 02:36		Drop Top Plug						8 5/8 HES TOP PLUG
05/11/2010 02:37		Pump Displacement	5	69.5			251.0	69.5 BBL RIG WATER
05/11/2010 02:52		Spot Cement	5	69.6				SPOT CMT 38 FT IN PIPE
05/11/2010 03:11		Other	1	20			52.0	1" JOB 100 SKS 20 BBL TOP OFF CEMENT @ 15 PPG
05/11/2010 06:15		Start Job						TOP OUT (2)
05/11/2010 06:17		Pump Cement	1.75	9			52.0	44 SKS 9 BBL STANDARD @ 15 PPG
05/11/2010 07:06		End Job						STOP PUMPING CMT LOOK AT IN TWO HRS
05/11/2010 09:03		End Job						CMT AT TOP OF HOLE
05/11/2010 09:05		Post-Job Safety Meeting (Pre Rig-Down)						
05/11/2010 09:15		Rig-Down Equipment						
05/11/2010 10:05		Depart Location Safety Meeting						
05/11/2010 10:15		Depart Location for Service Center or Other Site						THANKS LOU AND CREW

The Road to Excellence Starts with Safety

Sold To #: 340078		Ship To #: 2783530		Quote #:		Sales Order #: 7359338	
Customer: ENCANA OIL & GAS (USA) INC. - EBUS				Customer Rep: PILCHER, ED			
Well Name: Sears			Well #: 22-26			API/UWI #:	
Field: WATTENBERG		City (SAP): DACONO		County/Parish: Weld		State: Colorado	
Contractor: ENSIGN			Rig/Platform Name/Num: # 122				
Job Purpose: Cement Surface Casing							
Well Type: Development Well			Job Type: Cement Surface Casing				
Sales Person: FLING, MATTHEW			Srvc Supervisor: PATTERSON, HARRY			MBU ID Emp #: 359371	

Job Personnel

HES Emp Name	Exp Hrs	Emp #	HES Emp Name	Exp Hrs	Emp #	HES Emp Name	Exp Hrs	Emp #
BANUELOS, GUADALUPE		372277	PATTERSON, HARRY Louis		359371	RAMOS, REFUGIO Castro		435413
VIGIL, NICHOLAS Joseph		443481						

Equipment

HES Unit #	Distance-1 way	HES Unit #	Distance-1 way	HES Unit #	Distance-1 way	HES Unit #	Distance-1 way
10248053C	11 mile	10724567C	11 mile	10829456	11 mile	10972458	11 mile
11410470C	11 mile						

Job Hours

Date	On Location Hours	Operating Hours	Date	On Location Hours	Operating Hours	Date	On Location Hours	Operating Hours
TOTAL	Total is the sum of each column separately							

Job

Formation Name					Date	Time	Time Zone
Formation Depth (MD)	Top	Bottom			Called Out	10 - May - 2010	18:00 MST
Form Type	BHST				On Location	10 - May - 2010	22:00 MST
Job depth MD	1137. ft	Job Depth TVD	1137. ft		Job Started	11 - May - 2010	01:55 MST
Water Depth	Wk Ht Above Floor		5. ft		Job Completed	11 - May - 2010	09:03 MST
Perforation Depth (MD)	From	To			Departed Loc	11 - May - 2010	10:15 MST

Well Data

Description	New / Used	Max pressure psig	Size in	ID in	Weight lbm/ft	Thread	Grade	Top MD ft	Bottom MD ft	Top TVD ft	Bottom TVD ft
Open Hole				12.25				.	1120.		
Surface Casing	New		8.625	8.097	24.		J-55	.	1120.		

Tools and Accessories

Type	Size	Qty	Make	Depth	Type	Size	Qty	Make	Depth	Type	Size	Qty	Make
Guide Shoe					Packer					Top Plug			
Float Shoe					Bridge Plug					Bottom Plug			
Float Collar					Retainer					SSR plug set			
Insert Float										Plug Container			
Stage Tool										Centralizers			

Miscellaneous Materials

Gelling Agt		Conc		Surfactant		Conc		Acid Type		Qty		Conc	%
Treatment Fld		Conc		Inhibitor		Conc		Sand Type		Size		Qty	

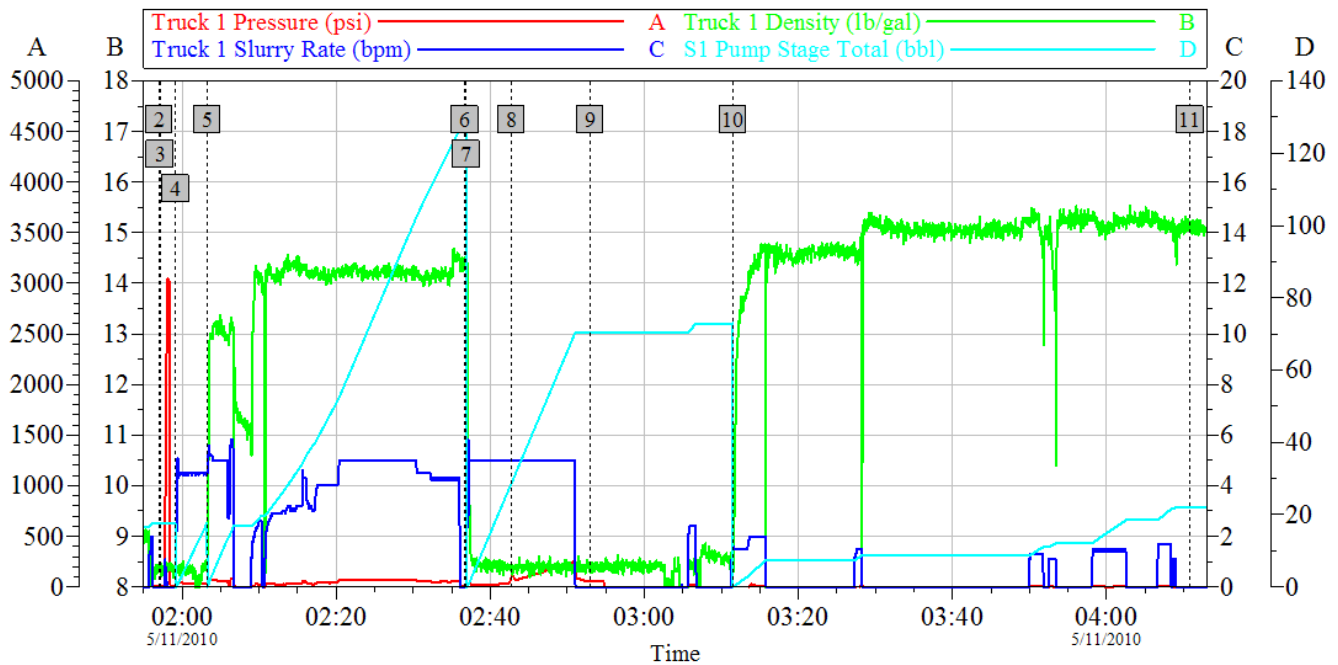
Fluid Data

Stage/Plug #: 1									
Fluid #	Stage Type	Fluid Name	Qty	Qty uom	Mixing Density lbm/gal	Yield ft ³ /sk	Mix Fluid Gal/sk	Rate bbl/min	Total Mix Fluid Gal/sk
1	Water Spacer		20.00	bbl	8.33	.0	.0	5.0	
2	Lead Cement	SWIFTCEM (TM) SYSTEM (452990)	440.0	sacks	14.2	1.51	7.53	5.0	7.53
	2 %	CAL-SEAL 60, 50 LB BAG (101217146)							
	2 %	ECONOLITE (100001580)							
	0.2 %	VERSASET, 55 LB SK (101376573)							
	7.53 Gal	FRESH WATER							
3	Water Displacement		70.00	bbl	8.33	.0	.0	5.0	
4	15.6# Neat	CMT - STANDARD TYPE I / II CEMENT (101439798)		sacks	15.6	1.18	5.23	2.0	5.23
	94 lbm	TYPE I / II CEMENT, BULK (101439798)							
	5.225 Gal	FRESH WATER							
Calculated Values		Pressures		Volumes					
Displacement		Shut In: Instant		Lost Returns		Cement Slurry		Pad	
Top Of Cement		5 Min		Cement Returns		Actual Displacement		Treatment	
Frac Gradient		15 Min		Spacers		Load and Breakdown		Total Job	
Rates									
Circulating		Mixing		Displacement		Avg. Job			
Cement Left In Pipe	Amount	0 ft	Reason	Shoe Joint					
Frac Ring # 1 @	ID	Frac ring # 2 @	ID	Frac Ring # 3 @	ID	Frac Ring # 4 @	ID		
The Information Stated Herein Is Correct				Customer Representative Signature					

HALLIBURTON

ENCANA 5/11/10 SURFACE

SEARS 22-26



Global Event Log

2 Start Job	01:57:01	3 Test Lines	01:57:09	4 Pump Spacer 1	01:59:08
5 Pump Cement	02:03:15	6 Drop Plug	02:36:42	7 Pump Displacement	02:36:53
8 Displ Reached Cmmt	02:42:46	9 Shut In Well	02:52:59	10 Pump Cap Cement	03:11:31
11 End Job	04:10:51				

Customer:

Well Description:

Job Date: 11-May-2010

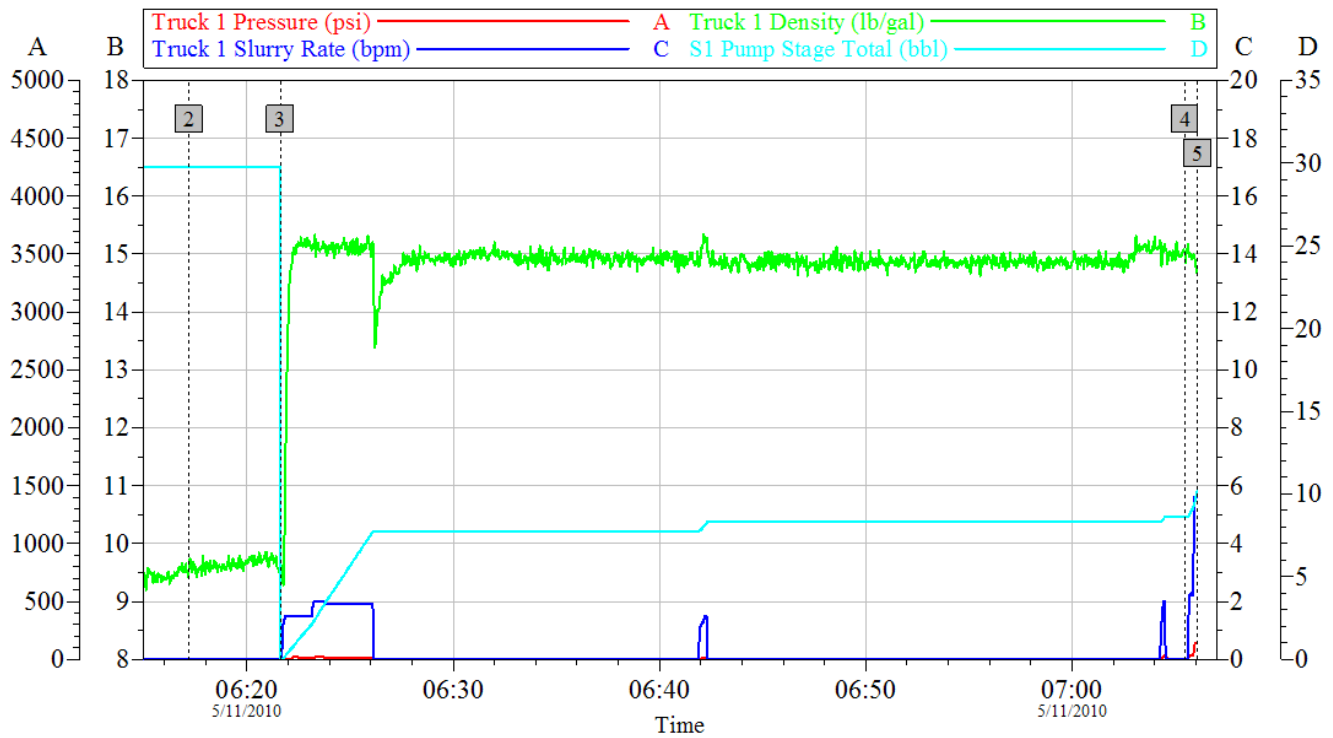
UWI:

Sales Order #: 7359338

OptiCem v6.4.2
11-May-10 04:23

ENCANA 5/11/10 TOP OUT (2)

SEARS 22-26



Global Event Log

2	Start Job	06:17:11	3	Pump Cap Cement	06:21:37
4	End Job	07:05:28	5	Ending Job	07:06:06

Customer:	Job Date: 11-May-2010	Sales Order #: 7359338
Well Description:	UWI:	

OptiCem v6.4.2
11-May-10 07:14