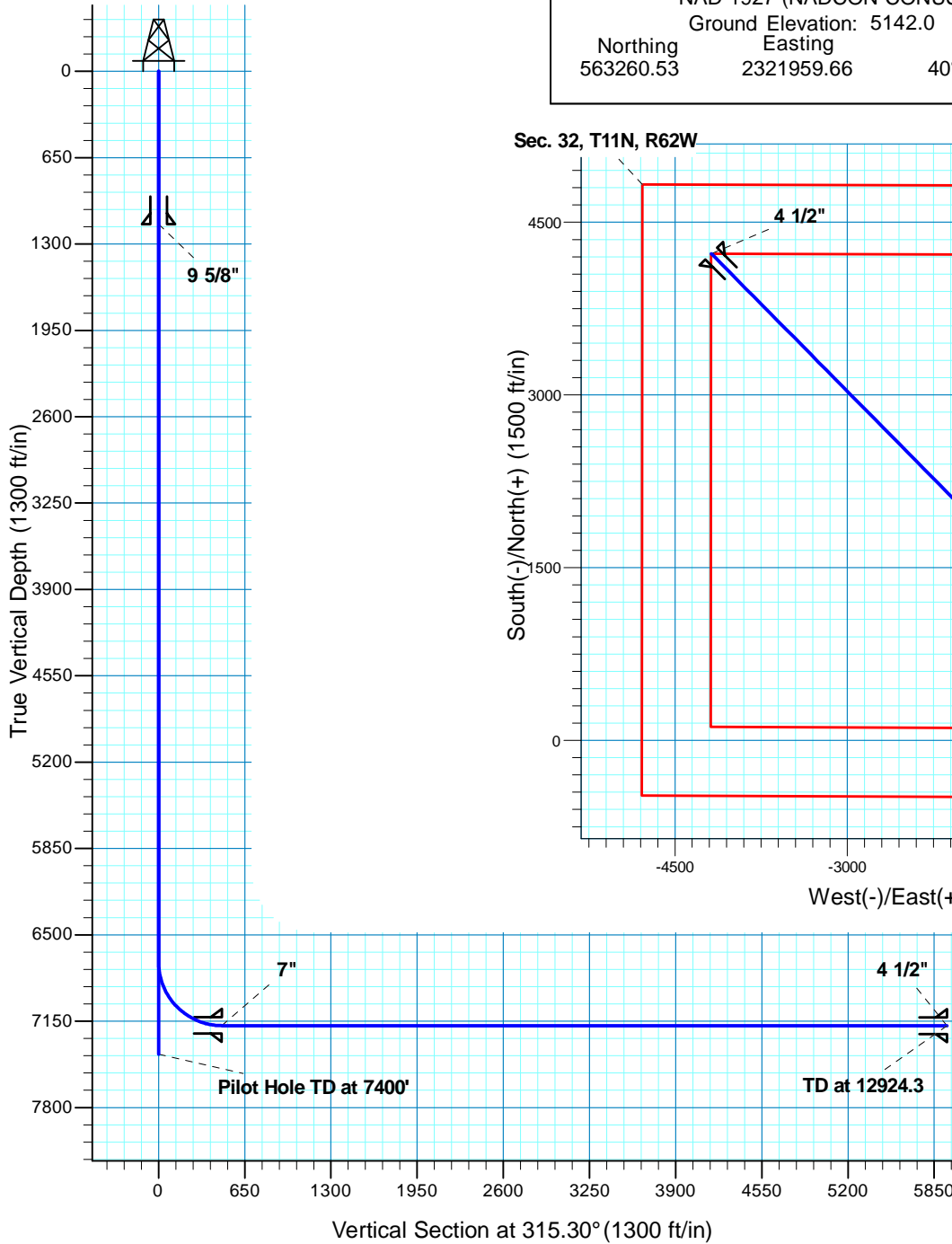


# Garden Creek 24-32H

Section 32 T11N R62W  
Weld County, CO



Surface Location			
NAD 1927 (NADCON CONUS) Colorado North 501			
Ground Elevation: 5142.0 Rig @ 5167.0ft (TBD)			
Northing	Easting	Latitude	Longitude
563260.53	2321959.66	40° 52' 25.500 N	104° 20' 9.082 W



**T M**

Azimuths to True North  
Magnetic North: 8.70°

Magnetic Field  
Strength: 53499.0nT  
Dip Angle: 67.53°  
Date: 11/24/2010  
Model: IGRF200510

Project: DJ - Hereford Ranch  
Site: Garden Creek 24-32H  
Well: Garden Creek 24-32H  
Plan: Sundry - Sidetrack & Lateral

## SECTION DETAILS

Sec	MD	Inc	Azi	TVD	+N/-S	+E/-W	DLeg	TFace	VSec	Target
1	6500.0	0.00	0.00	6500.0	0.0	0.0	0.00	0.00	0.0	
2	6705.5	0.00	0.00	6705.5	0.0	0.0	0.00	0.00	0.0	
3	7455.5	90.00	315.30	7183.0	339.4	-335.8	12.00	315.30	477.5	
4	12924.3	90.00	315.30	7183.0	4226.7	-4182.5	0.00	0.00	5946.3	Garden Creek 24-32H (BHL - M2)

## TARGET DETAILS

Name	TVD	+N/-S	+E/-W	Northing	Easting	Latitude	Longitude	Shape Point
Garden Creek 24-32H (BHL - M2)	7183.0	4226.7	-4182.5	567431.98	2317722.08	40° 53' 7.260 N	104° 21' 3.532 W	



## **Denver Division- Colorado**

**DJ - Hereford Ranch**

**Garden Creek 24-32H**

**Garden Creek 24-32H**

**Sidetrack - Lateral**

**Plan: Sundry - Sidetrack & Lateral**

## **Standard Planning Report**

**24 November, 2010**

<b>Database:</b>	EDM 2003.21 Single User Db	<b>Local Co-ordinate Reference:</b>	Well Garden Creek 24-32H
<b>Company:</b>	Denver Division- Colorado	<b>TVD Reference:</b>	Rig @ 5167.0ft (TBD)
<b>Project:</b>	DJ - Hereford Ranch	<b>MD Reference:</b>	Rig @ 5167.0ft (TBD)
<b>Site:</b>	Garden Creek 24-32H	<b>North Reference:</b>	True
<b>Well:</b>	Garden Creek 24-32H	<b>Survey Calculation Method:</b>	Minimum Curvature
<b>Wellbore:</b>	Sidetrack - Lateral		
<b>Design:</b>	Sundry - Sidetrack & Lateral		

<b>Project</b>	DJ - Hereford Ranch, Weld County		
<b>Map System:</b>	US State Plane 1927 (Exact solution)	<b>System Datum:</b>	Mean Sea Level
<b>Geo Datum:</b>	NAD 1927 (NADCON CONUS)		
<b>Map Zone:</b>	Colorado North 501		

Site		Garden Creek 24-32H			
Site Position:		Northing:	563,260.53 ft	Latitude:	40° 52' 25.500 N
From:	Lat/Long	Easting:	2,321,959.66 ft	Longitude:	104° 20' 9.082 W
Position Uncertainty:	0.0 ft	Slot Radius:	"	Grid Convergence:	0.75 °

Well		Garden Creek 24-32H				
Well Position	+N/-S	0.0 ft	Northing:	563,260.53 ft	Latitude:	40° 52' 25.500 N
	+E/-W	0.0 ft	Easting:	2,321,959.66 ft	Longitude:	104° 20' 9.082 W
Position Uncertainty		0.0 ft	Wellhead Elevation:	ft	Ground Level:	5,142.0 ft

<b>Wellbore</b>	Sidetrack - Lateral				
<b>Magnetics</b>	<b>Model Name</b>	<b>Sample Date</b>	<b>Declination (°)</b>	<b>Dip Angle (°)</b>	<b>Field Strength (nT)</b>
	IGRF200510	11/24/2010	8.70	67.53	53,499

<b>Design</b>	Sundry - Sidetrack & Lateral			
<b>Audit Notes:</b>				
<b>Version:</b>	<b>Phase:</b>	PROTOTYPE	<b>Tie On Depth:</b>	6,500.0
<b>Vertical Section:</b>	<b>Depth From (TVD)</b>	<b>+N/-S (ft)</b>	<b>+E/-W (ft)</b>	<b>Direction (°)</b>
	0.0	0.0	0.0	315.30

<b>Plan Sections</b>										
Measured Depth (ft)	Inclination (°)	Azimuth (°)	Vertical Depth (ft)	+N/-S (ft)	+E/-W (ft)	Dogleg Rate (°/100ft)	Build Rate (°/100ft)	Turn Rate (°/100ft)	TFO (°)	Target
6,500.0	0.00	0.00	6,500.0	0.0	0.0	0.00	0.00	0.00	0.00	
6,705.5	0.00	0.00	6,705.5	0.0	0.0	0.00	0.00	0.00	0.00	
7,455.5	90.00	315.30	7,183.0	339.4	-335.8	12.00	12.00	0.00	315.30	
12,924.3	90.00	315.30	7,183.0	4,226.7	-4,182.5	0.00	0.00	0.00	0.00	Garden Creek 24-32H



# EOG Resources

## Planning Report

<b>Database:</b>	EDM 2003.21 Single User Db	<b>Local Co-ordinate Reference:</b>	Well Garden Creek 24-32H
<b>Company:</b>	Denver Division- Colorado	<b>TVD Reference:</b>	Rig @ 5167.0ft (TBD)
<b>Project:</b>	DJ - Hereford Ranch	<b>MD Reference:</b>	Rig @ 5167.0ft (TBD)
<b>Site:</b>	Garden Creek 24-32H	<b>North Reference:</b>	True
<b>Well:</b>	Garden Creek 24-32H	<b>Survey Calculation Method:</b>	Minimum Curvature
<b>Wellbore:</b>	Sidetrack - Lateral		
<b>Design:</b>	Sundry - Sidetrack & Lateral		

Planned Survey									
Measured Depth (ft)	Inclination (°)	Azimuth (°)	Vertical Depth (ft)	+N/-S (ft)	+E/-W (ft)	Vertical Section (ft)	Dogleg Rate (°/100ft)	Build Rate (°/100ft)	Turn Rate (°/100ft)
0.0	0.00	0.00	0.0	0.0	0.0	0.0	0.00	0.00	0.00
100.0	0.00	0.00	100.0	0.0	0.0	0.0	0.00	0.00	0.00
200.0	0.00	0.00	200.0	0.0	0.0	0.0	0.00	0.00	0.00
300.0	0.00	0.00	300.0	0.0	0.0	0.0	0.00	0.00	0.00
400.0	0.00	0.00	400.0	0.0	0.0	0.0	0.00	0.00	0.00
500.0	0.00	0.00	500.0	0.0	0.0	0.0	0.00	0.00	0.00
600.0	0.00	0.00	600.0	0.0	0.0	0.0	0.00	0.00	0.00
700.0	0.00	0.00	700.0	0.0	0.0	0.0	0.00	0.00	0.00
800.0	0.00	0.00	800.0	0.0	0.0	0.0	0.00	0.00	0.00
900.0	0.00	0.00	900.0	0.0	0.0	0.0	0.00	0.00	0.00
1,000.0	0.00	0.00	1,000.0	0.0	0.0	0.0	0.00	0.00	0.00
1,100.0	0.00	0.00	1,100.0	0.0	0.0	0.0	0.00	0.00	0.00
1,150.0	0.00	0.00	1,150.0	0.0	0.0	0.0	0.00	0.00	0.00
9 5/8"									
1,200.0	0.00	0.00	1,200.0	0.0	0.0	0.0	0.00	0.00	0.00
1,300.0	0.00	0.00	1,300.0	0.0	0.0	0.0	0.00	0.00	0.00
1,400.0	0.00	0.00	1,400.0	0.0	0.0	0.0	0.00	0.00	0.00
1,500.0	0.00	0.00	1,500.0	0.0	0.0	0.0	0.00	0.00	0.00
1,600.0	0.00	0.00	1,600.0	0.0	0.0	0.0	0.00	0.00	0.00
1,700.0	0.00	0.00	1,700.0	0.0	0.0	0.0	0.00	0.00	0.00
1,800.0	0.00	0.00	1,800.0	0.0	0.0	0.0	0.00	0.00	0.00
1,900.0	0.00	0.00	1,900.0	0.0	0.0	0.0	0.00	0.00	0.00
2,000.0	0.00	0.00	2,000.0	0.0	0.0	0.0	0.00	0.00	0.00
2,100.0	0.00	0.00	2,100.0	0.0	0.0	0.0	0.00	0.00	0.00
2,200.0	0.00	0.00	2,200.0	0.0	0.0	0.0	0.00	0.00	0.00
2,300.0	0.00	0.00	2,300.0	0.0	0.0	0.0	0.00	0.00	0.00
2,400.0	0.00	0.00	2,400.0	0.0	0.0	0.0	0.00	0.00	0.00
2,500.0	0.00	0.00	2,500.0	0.0	0.0	0.0	0.00	0.00	0.00
2,600.0	0.00	0.00	2,600.0	0.0	0.0	0.0	0.00	0.00	0.00
2,700.0	0.00	0.00	2,700.0	0.0	0.0	0.0	0.00	0.00	0.00
2,800.0	0.00	0.00	2,800.0	0.0	0.0	0.0	0.00	0.00	0.00
2,900.0	0.00	0.00	2,900.0	0.0	0.0	0.0	0.00	0.00	0.00
3,000.0	0.00	0.00	3,000.0	0.0	0.0	0.0	0.00	0.00	0.00
3,100.0	0.00	0.00	3,100.0	0.0	0.0	0.0	0.00	0.00	0.00
3,200.0	0.00	0.00	3,200.0	0.0	0.0	0.0	0.00	0.00	0.00
3,300.0	0.00	0.00	3,300.0	0.0	0.0	0.0	0.00	0.00	0.00
3,400.0	0.00	0.00	3,400.0	0.0	0.0	0.0	0.00	0.00	0.00
3,500.0	0.00	0.00	3,500.0	0.0	0.0	0.0	0.00	0.00	0.00
3,600.0	0.00	0.00	3,600.0	0.0	0.0	0.0	0.00	0.00	0.00
3,700.0	0.00	0.00	3,700.0	0.0	0.0	0.0	0.00	0.00	0.00
3,800.0	0.00	0.00	3,800.0	0.0	0.0	0.0	0.00	0.00	0.00
3,900.0	0.00	0.00	3,900.0	0.0	0.0	0.0	0.00	0.00	0.00
4,000.0	0.00	0.00	4,000.0	0.0	0.0	0.0	0.00	0.00	0.00
4,100.0	0.00	0.00	4,100.0	0.0	0.0	0.0	0.00	0.00	0.00
4,200.0	0.00	0.00	4,200.0	0.0	0.0	0.0	0.00	0.00	0.00
4,300.0	0.00	0.00	4,300.0	0.0	0.0	0.0	0.00	0.00	0.00
4,400.0	0.00	0.00	4,400.0	0.0	0.0	0.0	0.00	0.00	0.00
4,500.0	0.00	0.00	4,500.0	0.0	0.0	0.0	0.00	0.00	0.00
4,600.0	0.00	0.00	4,600.0	0.0	0.0	0.0	0.00	0.00	0.00
4,700.0	0.00	0.00	4,700.0	0.0	0.0	0.0	0.00	0.00	0.00
4,800.0	0.00	0.00	4,800.0	0.0	0.0	0.0	0.00	0.00	0.00
4,900.0	0.00	0.00	4,900.0	0.0	0.0	0.0	0.00	0.00	0.00
5,000.0	0.00	0.00	5,000.0	0.0	0.0	0.0	0.00	0.00	0.00
5,100.0	0.00	0.00	5,100.0	0.0	0.0	0.0	0.00	0.00	0.00

<b>Database:</b>	EDM 2003.21 Single User Db	<b>Local Co-ordinate Reference:</b>	Well Garden Creek 24-32H
<b>Company:</b>	Denver Division- Colorado	<b>TVD Reference:</b>	Rig @ 5167.0ft (TBD)
<b>Project:</b>	DJ - Hereford Ranch	<b>MD Reference:</b>	Rig @ 5167.0ft (TBD)
<b>Site:</b>	Garden Creek 24-32H	<b>North Reference:</b>	True
<b>Well:</b>	Garden Creek 24-32H	<b>Survey Calculation Method:</b>	Minimum Curvature
<b>Wellbore:</b>	Sidetrack - Lateral		
<b>Design:</b>	Sundry - Sidetrack & Lateral		

Planned Survey									
Measured Depth (ft)	Inclination (°)	Azimuth (°)	Vertical Depth (ft)	+N/-S (ft)	+E/-W (ft)	Vertical Section (ft)	Dogleg Rate (°/100ft)	Build Rate (°/100ft)	Turn Rate (°/100ft)
5,200.0	0.00	0.00	5,200.0	0.0	0.0	0.0	0.00	0.00	0.00
5,300.0	0.00	0.00	5,300.0	0.0	0.0	0.0	0.00	0.00	0.00
5,400.0	0.00	0.00	5,400.0	0.0	0.0	0.0	0.00	0.00	0.00
5,500.0	0.00	0.00	5,500.0	0.0	0.0	0.0	0.00	0.00	0.00
5,600.0	0.00	0.00	5,600.0	0.0	0.0	0.0	0.00	0.00	0.00
5,700.0	0.00	0.00	5,700.0	0.0	0.0	0.0	0.00	0.00	0.00
5,800.0	0.00	0.00	5,800.0	0.0	0.0	0.0	0.00	0.00	0.00
5,900.0	0.00	0.00	5,900.0	0.0	0.0	0.0	0.00	0.00	0.00
6,000.0	0.00	0.00	6,000.0	0.0	0.0	0.0	0.00	0.00	0.00
6,100.0	0.00	0.00	6,100.0	0.0	0.0	0.0	0.00	0.00	0.00
6,200.0	0.00	0.00	6,200.0	0.0	0.0	0.0	0.00	0.00	0.00
6,300.0	0.00	0.00	6,300.0	0.0	0.0	0.0	0.00	0.00	0.00
6,400.0	0.00	0.00	6,400.0	0.0	0.0	0.0	0.00	0.00	0.00
6,500.0	0.00	0.00	6,500.0	0.0	0.0	0.0	0.00	0.00	0.00
6,600.0	0.00	0.00	6,600.0	0.0	0.0	0.0	0.00	0.00	0.00
6,700.0	0.00	0.00	6,700.0	0.0	0.0	0.0	0.00	0.00	0.00
6,705.5	0.00	0.00	6,705.5	0.0	0.0	0.0	0.00	0.00	0.00
6,800.0	11.34	315.30	6,799.4	6.6	-6.6	9.3	12.00	12.00	0.00
6,900.0	23.34	315.30	6,894.7	27.8	-27.5	39.1	12.00	12.00	0.00
7,000.0	35.34	315.30	6,981.7	62.5	-61.9	88.0	12.00	12.00	0.00
7,100.0	47.34	315.30	7,056.6	109.4	-108.2	153.9	12.00	12.00	0.00
7,200.0	59.34	315.30	7,116.2	166.3	-164.6	234.0	12.00	12.00	0.00
7,300.0	71.34	315.30	7,157.9	230.8	-228.4	324.7	12.00	12.00	0.00
7,400.0	83.34	315.30	7,179.8	300.0	-296.9	422.1	12.00	12.00	0.00
7,455.5	90.00	315.30	7,183.0	339.4	-335.8	477.4	12.00	12.00	0.00
7"									
7,500.0	90.00	315.30	7,183.0	371.0	-367.1	521.9	0.01	0.01	0.00
7,600.0	90.00	315.30	7,183.0	442.1	-437.4	621.9	0.00	0.00	0.00
7,700.0	90.00	315.30	7,183.0	513.2	-507.8	721.9	0.00	0.00	0.00
7,800.0	90.00	315.30	7,183.0	584.2	-578.1	821.9	0.00	0.00	0.00
7,900.0	90.00	315.30	7,183.0	655.3	-648.5	921.9	0.00	0.00	0.00
8,000.0	90.00	315.30	7,183.0	726.4	-718.8	1,021.9	0.00	0.00	0.00
8,100.0	90.00	315.30	7,183.0	797.5	-789.1	1,121.9	0.00	0.00	0.00
8,200.0	90.00	315.30	7,183.0	868.6	-859.5	1,221.9	0.00	0.00	0.00
8,300.0	90.00	315.30	7,183.0	939.7	-929.8	1,321.9	0.00	0.00	0.00
8,400.0	90.00	315.30	7,183.0	1,010.7	-1,000.1	1,421.9	0.00	0.00	0.00
8,500.0	90.00	315.30	7,183.0	1,081.8	-1,070.5	1,521.9	0.00	0.00	0.00
8,600.0	90.00	315.30	7,183.0	1,152.9	-1,140.8	1,621.9	0.00	0.00	0.00
8,700.0	90.00	315.30	7,183.0	1,224.0	-1,211.2	1,721.9	0.00	0.00	0.00
8,800.0	90.00	315.30	7,183.0	1,295.1	-1,281.5	1,821.9	0.00	0.00	0.00
8,900.0	90.00	315.30	7,183.0	1,366.1	-1,351.8	1,921.9	0.00	0.00	0.00
9,000.0	90.00	315.30	7,183.0	1,437.2	-1,422.2	2,021.9	0.00	0.00	0.00
9,100.0	90.00	315.30	7,183.0	1,508.3	-1,492.5	2,121.9	0.00	0.00	0.00
9,200.0	90.00	315.30	7,183.0	1,579.4	-1,562.8	2,221.9	0.00	0.00	0.00
9,300.0	90.00	315.30	7,183.0	1,650.5	-1,633.2	2,321.9	0.00	0.00	0.00
9,400.0	90.00	315.30	7,183.0	1,721.6	-1,703.5	2,421.9	0.00	0.00	0.00
9,500.0	90.00	315.30	7,183.0	1,792.6	-1,773.9	2,521.9	0.00	0.00	0.00
9,600.0	90.00	315.30	7,183.0	1,863.7	-1,844.2	2,621.9	0.00	0.00	0.00
9,700.0	90.00	315.30	7,183.0	1,934.8	-1,914.5	2,721.9	0.00	0.00	0.00
9,800.0	90.00	315.30	7,183.0	2,005.9	-1,984.9	2,821.9	0.00	0.00	0.00
9,900.0	90.00	315.30	7,183.0	2,077.0	-2,055.2	2,921.9	0.00	0.00	0.00
10,000.0	90.00	315.30	7,183.0	2,148.0	-2,125.5	3,021.9	0.00	0.00	0.00
10,100.0	90.00	315.30	7,183.0	2,219.1	-2,195.9	3,121.9	0.00	0.00	0.00

<b>Database:</b>	EDM 2003.21 Single User Db	<b>Local Co-ordinate Reference:</b>	Well Garden Creek 24-32H
<b>Company:</b>	Denver Division- Colorado	<b>TVD Reference:</b>	Rig @ 5167.0ft (TBD)
<b>Project:</b>	DJ - Hereford Ranch	<b>MD Reference:</b>	Rig @ 5167.0ft (TBD)
<b>Site:</b>	Garden Creek 24-32H	<b>North Reference:</b>	True
<b>Well:</b>	Garden Creek 24-32H	<b>Survey Calculation Method:</b>	Minimum Curvature
<b>Wellbore:</b>	Sidetrack - Lateral		
<b>Design:</b>	Sundry - Sidetrack & Lateral		

Planned Survey										
Measured Depth (ft)	Inclination (°)	Azimuth (°)	Vertical Depth (ft)	+N/-S (ft)	+E/-W (ft)	Vertical Section (ft)	Dogleg Rate (°/100ft)	Build Rate (°/100ft)	Turn Rate (°/100ft)	
10,200.0	90.00	315.30	7,183.0	2,290.2	-2,266.2	3,221.9	0.00	0.00	0.00	
10,300.0	90.00	315.30	7,183.0	2,361.3	-2,336.6	3,321.9	0.00	0.00	0.00	
10,400.0	90.00	315.30	7,183.0	2,432.4	-2,406.9	3,421.9	0.00	0.00	0.00	
10,500.0	90.00	315.30	7,183.0	2,503.5	-2,477.2	3,521.9	0.00	0.00	0.00	
10,600.0	90.00	315.30	7,183.0	2,574.5	-2,547.6	3,621.9	0.00	0.00	0.00	
10,700.0	90.00	315.30	7,183.0	2,645.6	-2,617.9	3,721.9	0.00	0.00	0.00	
10,800.0	90.00	315.30	7,183.0	2,716.7	-2,688.2	3,821.9	0.00	0.00	0.00	
10,900.0	90.00	315.30	7,183.0	2,787.8	-2,758.6	3,921.9	0.00	0.00	0.00	
11,000.0	90.00	315.30	7,183.0	2,858.9	-2,828.9	4,021.9	0.00	0.00	0.00	
11,100.0	90.00	315.30	7,183.0	2,929.9	-2,899.3	4,121.9	0.00	0.00	0.00	
11,200.0	90.00	315.30	7,183.0	3,001.0	-2,969.6	4,221.9	0.00	0.00	0.00	
11,300.0	90.00	315.30	7,183.0	3,072.1	-3,039.9	4,321.9	0.00	0.00	0.00	
11,400.0	90.00	315.30	7,183.0	3,143.2	-3,110.3	4,421.9	0.00	0.00	0.00	
11,500.0	90.00	315.30	7,183.0	3,214.3	-3,180.6	4,521.9	0.00	0.00	0.00	
11,600.0	90.00	315.30	7,183.0	3,285.4	-3,250.9	4,621.9	0.00	0.00	0.00	
11,700.0	90.00	315.30	7,183.0	3,356.4	-3,321.3	4,721.9	0.00	0.00	0.00	
11,800.0	90.00	315.30	7,183.0	3,427.5	-3,391.6	4,821.9	0.00	0.00	0.00	
11,900.0	90.00	315.30	7,183.0	3,498.6	-3,462.0	4,921.9	0.00	0.00	0.00	
12,000.0	90.00	315.30	7,183.0	3,569.7	-3,532.3	5,021.9	0.00	0.00	0.00	
12,100.0	90.00	315.30	7,183.0	3,640.8	-3,602.6	5,121.9	0.00	0.00	0.00	
12,200.0	90.00	315.30	7,183.0	3,711.8	-3,673.0	5,221.9	0.00	0.00	0.00	
12,300.0	90.00	315.30	7,183.0	3,782.9	-3,743.3	5,321.9	0.00	0.00	0.00	
12,400.0	90.00	315.30	7,183.0	3,854.0	-3,813.6	5,421.9	0.00	0.00	0.00	
12,500.0	90.00	315.30	7,183.0	3,925.1	-3,884.0	5,521.9	0.00	0.00	0.00	
12,600.0	90.00	315.30	7,183.0	3,996.2	-3,954.3	5,621.9	0.00	0.00	0.00	
12,700.0	90.00	315.30	7,183.0	4,067.3	-4,024.7	5,721.9	0.00	0.00	0.00	
12,800.0	90.00	315.30	7,183.0	4,138.3	-4,095.0	5,821.9	0.00	0.00	0.00	
12,900.0	90.00	315.30	7,183.0	4,209.4	-4,165.3	5,921.9	0.00	0.00	0.00	
12,924.3	90.00	315.30	7,183.0	4,226.7	-4,182.4	5,946.2	0.00	0.00	0.00	
4 1/2"										

Casing Points					
Measured Depth (ft)	Vertical Depth (ft)	Name	Casing Diameter (")	Hole Diameter (")	
1,150.0	1,150.0	9 5/8"	9-5/8	13-1/2	
7,455.5	7,183.0	7"	7	8-3/4	
12,924.3	7,183.0	4 1/2"	4-1/2	6	