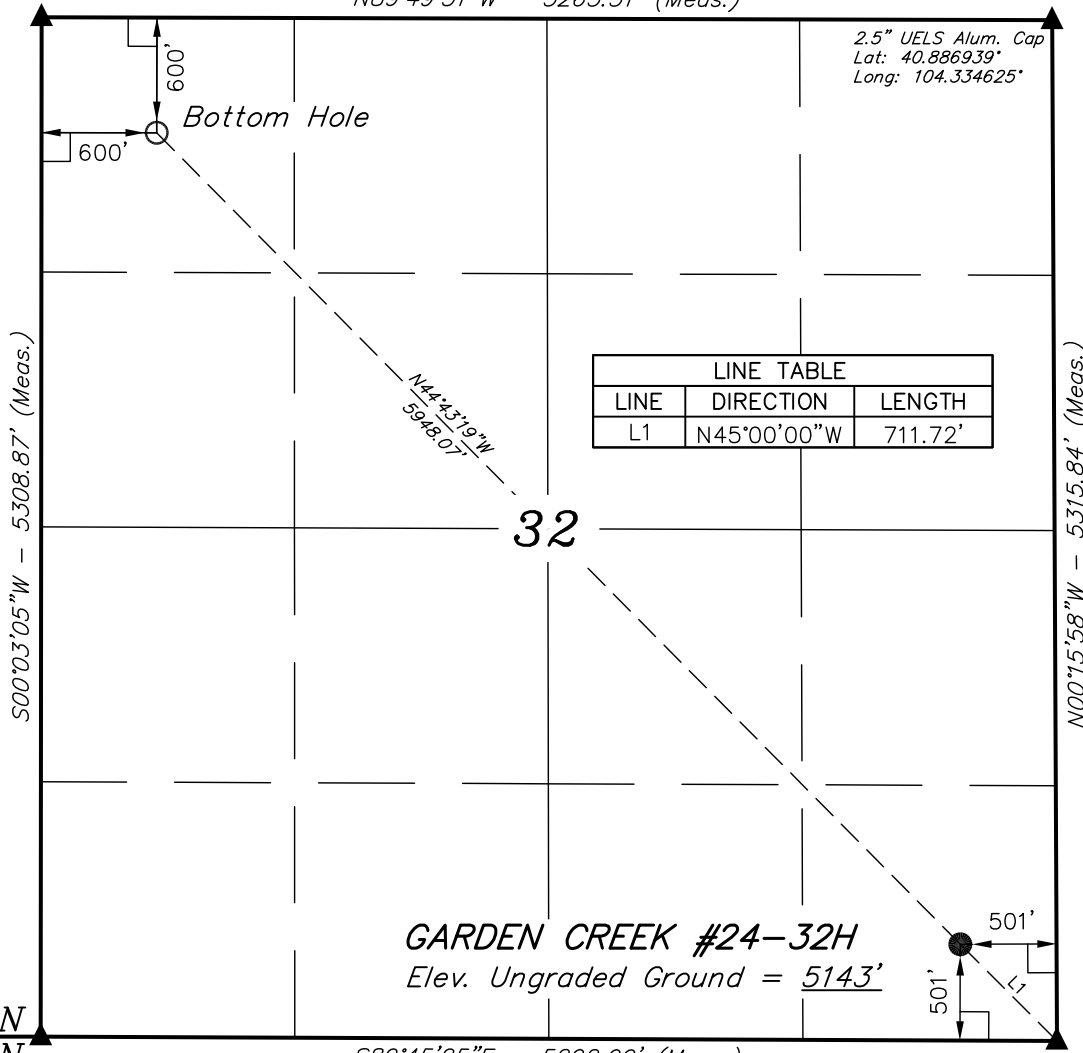


2006 UELS Alum. Cap
Lat: 40.886986°
Long: 104.353658°

T11N, R62W, 6th P.M.

N89°49'51"W - 5263.51' (Meas.)

2.5" UELS Alum. Cap
Lat: 40.886939°
Long: 104.334625°



GARDEN CREEK #24-32H
Elev. Ungraded Ground = 5143'

T11N
T10N

2.5" UELS Alum. Cap
Lat: 40.872419°
Long: 104.353678°

S89°45'25"E - 5292.99' (Meas.)

2.5" UELS Alum. Cap
Lat: 40.872353°
Long: 104.334544°

PDOP = 1.7

EOG RESOURCES, INC.

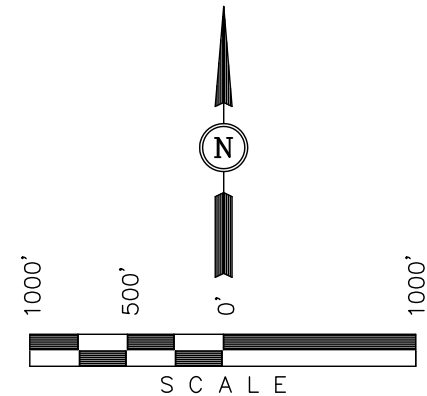
Well location, GARDEN CREEK #24-32H, located as shown in the SE 1/4 SE 1/4 of Section 32, T11N, R62W, 6th P.M., Weld County, Colorado.

BASIS OF ELEVATION

SPOT ELEVATION AT THE NORTHEAST CORNER OF SECTION 1, T11N, R63W, 6th P.M. TAKEN FROM THE HEREFORD, QUADRANGLE, COLORADO, WELD COUNTY, 7.5 MINUTE QUAD (TOPOGRAPHIC MAP) PUBLISHED BY THE UNITED STATES DEPARTMENT OF THE INTERIOR, GEOLOGICAL SURVEY. SAID ELEVATION IS MARKED AS BEING 5352 FEET.

BASIS OF BEARINGS

BASIS OF BEARINGS IS A G.P.S. OBSERVATION.



CERTIFICATE

THIS IS TO CERTIFY THAT THE ABOVE PLAT WAS PREPARED FROM FIELD NOTES OF ACTUAL SURVEYS MADE BY ME OR UNDER MY SUPERVISION AND THAT THE SAME ARE TRUE AND CORRECT TO THE BEST OF MY KNOWLEDGE AND BELIEF.

REGISTERED LAND SURVEYOR
REGISTRATION NO. 17492
STATE OF COLORADO

REVISED: 11-23-10

UINTAH ENGINEERING & LAND SURVEYING
85 SOUTH 200 EAST - VERNAL, UTAH 84078
(435) 789-1017

LEGEND:

- └─┘ = 90° SYMBOL
- = PROPOSED WELL HEAD.
- ▲ = SECTION CORNERS LOCATED.

NAD 83 (TARGET BOTTOM HOLE)	NAD 83 (SURFACE LOCATION)
LATITUDE = 40°53'07.20" (40.885333)	LATITUDE = 40°52'25.44" (40.873733)
LONGITUDE = 104°21'05.36" (104.351489)	LONGITUDE = 104°20'10.91" (104.336364)
NAD 27 (TARGET BOTTOM HOLE)	NAD 27 (SURFACE LOCATION)
LATITUDE = 40°53'07.26" (40.885350)	LATITUDE = 40°52'25.50" (40.873750)
LONGITUDE = 104°21'03.53" (104.350981)	LONGITUDE = 104°20'09.08" (104.335856)
STATE PLANE NAD 83	STATE PLANE NAD 83
N: 1567433.947 E: 3317573.237	N: 1563262.399 E: 3321810.652
STATE PLANE NAD 27	STATE PLANE NAD 27
N: 567432.091 E: 2317722.447	N: 563260.600 E: 2321959.804

SCALE 1" = 1000'	DATE SURVEYED: 05-17-10	DATE DRAWN: 06-10-10
PARTY L.P. J.M. S.L.	REFERENCES G.L.O. PLAT	
WEATHER COOL	FILE EOG RESOURCES, INC.	

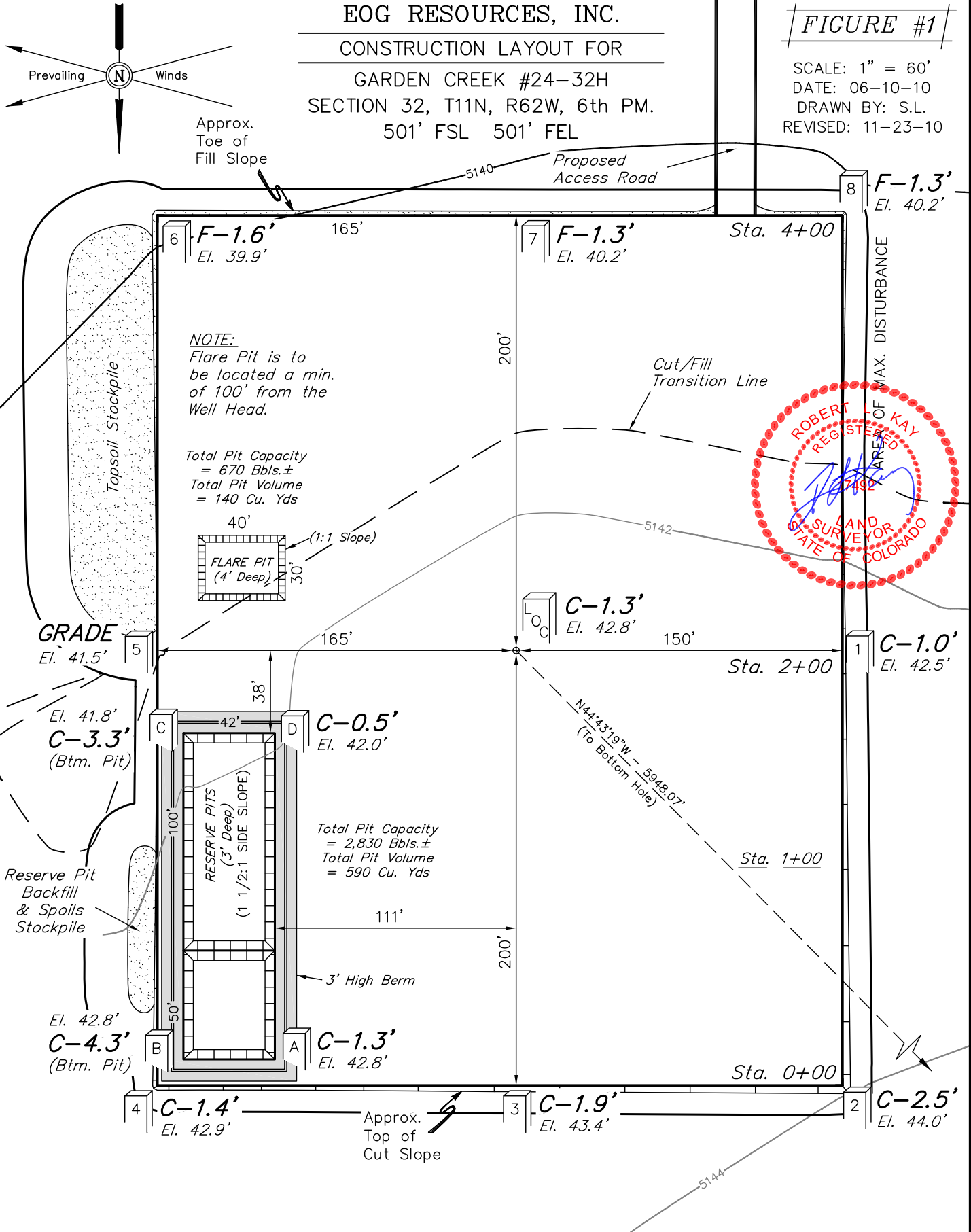
EOG RESOURCES, INC.

CONSTRUCTION LAYOUT FOR

GARDEN CREEK #24-32H
SECTION 32, T11N, R62W, 6th PM.
501' FSL 501' FEL

FIGURE #1

SCALE: 1" = 60'
DATE: 06-10-10
DRAWN BY: S.L.
REVISED: 11-23-10



Elev. Ungraded Ground At Loc. Stake = 5142.8'
FINISHED GRADE ELEV. AT LOC. STAKE = 5141.5'

UINTAH ENGINEERING & LAND SURVEYING
85 So. 200 East * Vernal, Utah 84078 * (435) 789-1017