



COMPENSATED DENSITY  
COMPENSATED NEUTRON  
DUAL INDUCTION

Company Bonanza Creek Operating Co. LLC  
Well North Plate 41-34  
Field Wattenberg  
County Weld  
State/Province Colorado

Location 660' FNL & 660' FEL  
Sec - 34, Twp - 5N, Rge - 63W  
Elevation 4335  
Other Services None

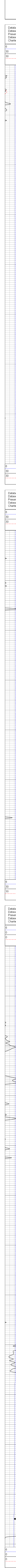
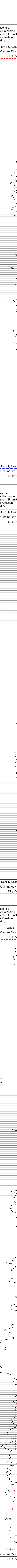
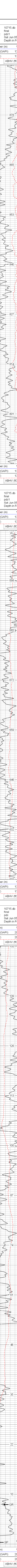
Company Well Field County State/Priv  
Permanent Datum GL  
Log Measured from KB  
Dilling Measured from KB  
Date June 5, 2010  
Run Number 6650  
Depth Logger 6650  
Tool Logged Interval 6650  
Casing Driller 414  
Casing Logger 414  
Bit Size 7-7/8"

Density / Viscosity  
Type Fluid in Hole  
pH / Fluid Loss  
Source of Sample  
Run @ Press Temp  
Run @ Press Rate  
Source of Flow Rate  
Run @ BHT  
Time Circulation Stopped  
Time Logger on Bottom  
Maximum Recorded Temperature  
Equipment Number  
Recorded By  
Reviewed By

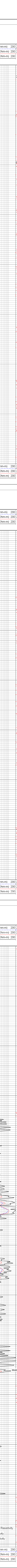
Comments

Annular volume calculated for 4.5" casing  
Mid Continent Rig 1  
Thank you for using Phoenix Surveys!!  
API #: 05-123-30518-00

Database File: 10715.db  
Dataset Pathname: final  
Presentation Format: pdc1  
Dataset Creation: Sat Jun 05 19:21:00 2010  
Charted by: Depth in Feet scaled 1:240



Database File: 10715.db  
Dataset Pathname: final  
Presentation Format: pdc1  
Dataset Creation: Sat Jun 05 19:21:00 2010  
Charted by: Depth in Feet scaled 1:240



Database File: 10715.db  
Dataset Pathname: final  
Presentation Format: pdc1  
Dataset Creation: Sat Jun 05 19:21:00 2010  
Charted by: Depth in Feet scaled 1:240

