



COMPENSATED DENSITY
COMPENSATED NEUTRON
DUAL INDUCTION

COMPANY

Well

Field

County

State/Province

Location

Sec - 3, Twp - 4N, Rge - 63W

Elevation

Log Measured From

Depth Measured From

Date

Run Number

Depth Meter

Bottom Log Material

Casing Driver

Casing Logger

Bit Size

Type Fluid in Hole

Fluid Density

Source of Sample

Temp @ Mass Temp

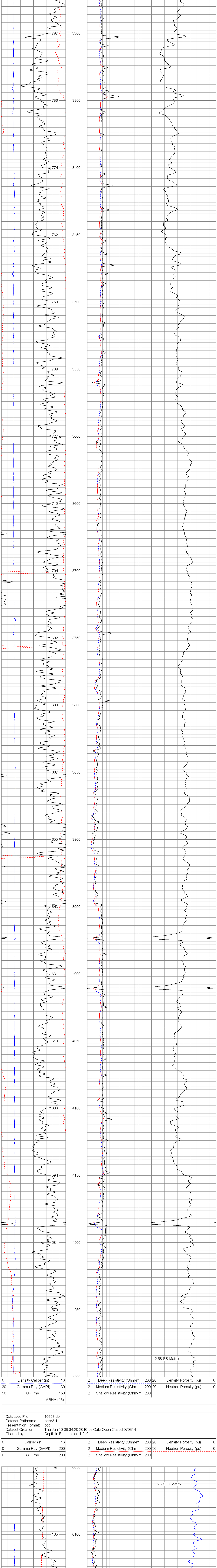
<<< Fold Here >>>

All interpretations are opinions based on inferences from electrical or other measurements and we cannot and do not guarantee the accuracy or correctness of any interpretation, and we shall not, except in the case of gross or willful negligence on our part, be liable or responsible for any loss, costs, damages, or expenses incurred or sustained by anyone resulting from any interpretation made by any of our officers, agents or employees. These interpretations are also subject to our general terms and conditions set out in our current Price Schedule.

Comments

Annular volume calculated for 4.5" casing
Mid Continent Rig 1
Thank you for using Phoenix Surveys!!
API #: 05-123-31475-00

Database File: 10623.db
Dataset Pathname: pass3
Presentation Format: pds1
Dataset Creation: Thu Jun 10 08:19:24 2010 by Log Open-Cased 070814
Charted by: Depth in Feet scaled 1:240



Database File: 10623.db
Dataset Pathname: pass3.1
Presentation Format: pds
Dataset Creation: Thu Jun 10 08:34:20 2010 by Calc: Open-Cased 070814
Charted by: Depth in Feet scaled 1:240

