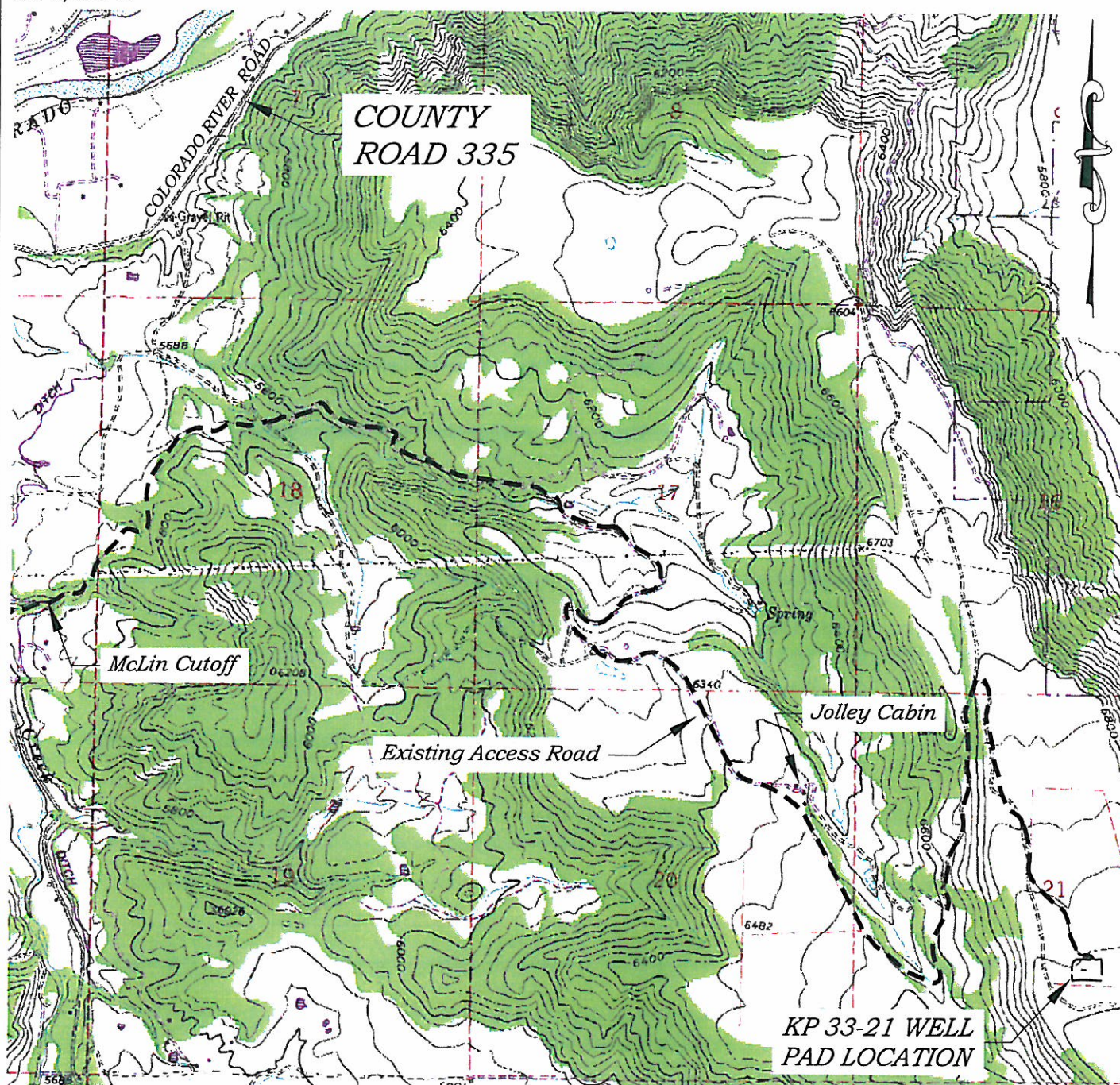


Section 21
T. 6 S., R. 91 W



ACCESS DESCRIPTION:

FROM THE INTERSECTION OF COLORADO INTERSTATE 70 OVERPASS (Exit 97) AND RIVER FRONTAGE ROAD SOUTH OF SILT, COLORADO, PROCEED EAST ± 0.4 MILES ALONG RIVER FRONTAGE ROAD TO THE INTERSECTION WITH COUNTY ROAD 311 (DIVIDE CREEK ROAD), PROCEED ALONG DIVIDE CREEK ROAD ± 3.3 MILES TO THE INTERSECTION WITH A DIRT/GRAVEL ROAD (McLin Cutoff), PROCEED LEFT IN AN EASTERLY DIRECTION ± 1.0 MILES TO FOUR-WAY INTERSECTION, PROCEED STRAIGHT IN AN EASTERLY TO SOUTHEASTERLY DIRECTION ± 4.4 MILES TO THE INTERSECTION WITH A DIRT/GRAVEL ROAD, PROCEED LEFT IN A SOUTHEASTERLY DIRECTION ± 0.3 MILES TO THE EXISTING KP 33-21 DRILL PAD LOCATION, AS SHOWN HEREON.

136 East Third Street
Rifle, Colorado 81650
Ph. (970) 625-1330
Fax (970) 625-2773



BOOKCLIFF
Survey Services, Inc.

SCALE: 1" = 2000'
DATE: 10/14/10
PLAT: 5 of 9
PROJECT: Williams Kokopelli
DFT: cws

Construction Plan Prepared for:

Williams Williams Production, RMT

KP 33-21 Drill Pad - Plat 5
ACCESS ROAD MAP