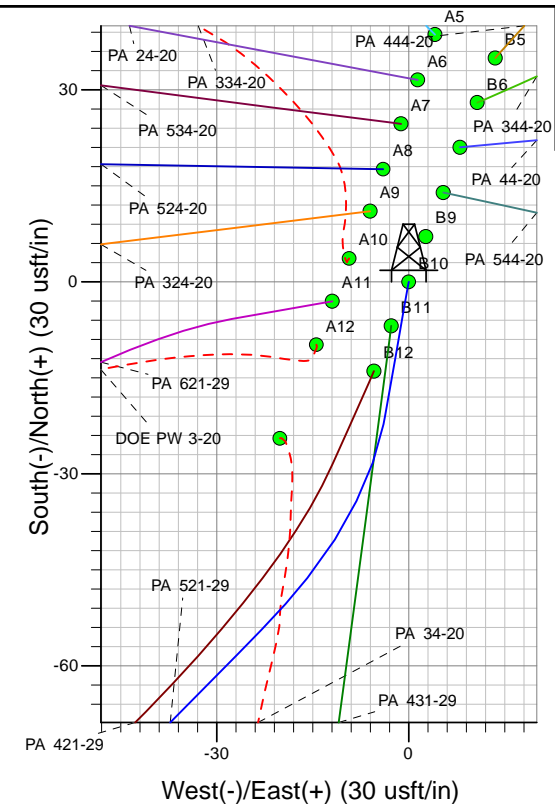
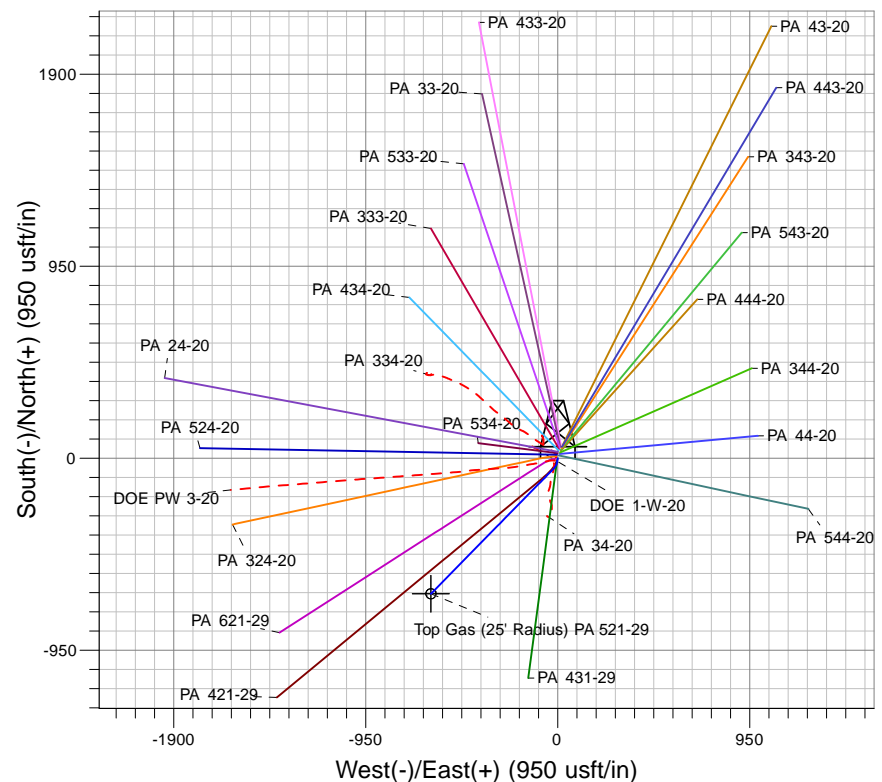
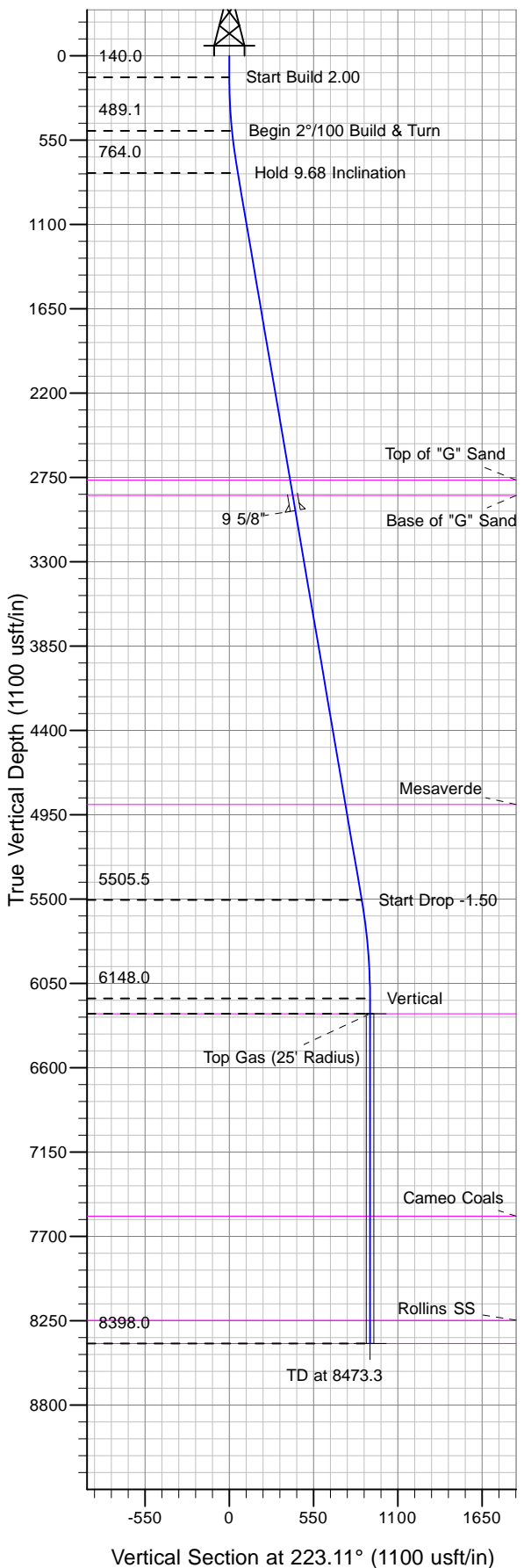




Well Name: PA 521-29
Surface Location: DOE 1-W-20 Pad
North American Datum 1983 , US State Plane 1983 , Colorado Central Zone
Ground Elevation: 6230.0
+N/-S +E/-W Northing Easting Latitude Longitude Slot
0.0 0.0 1618271.80 2289275.10 39° 30' 13.969 N 108° 1' 8.816 W B10
KELLYBUSHING @ 6256.0usft (SSD 577 (26' RKB) kjs)



Project: PA 20-06S-095W
Site: DOE 1-W-20 Pad
Well: PA 521-29
Plan #2 01Oct10 kjs

Azimuths to True North
Magnetic North: 10.51°
Magnetic Field
Strength: 52365.2snT
Dip Angle: 65.77°
Date: 4/22/2010
Model: IGRF2010

ANNOTATIONS									
TVD	MD	Inc	Azi	+N/-S	+E/-W	VSec	Departure	Annotation	
140.0	140.0	0.00	0.00	0.0	0.0	0.0	0.0	Start Build 2.00	
489.1	490.0	7.00	190.00	-21.0	-3.7	17.9	21.4	Begin 2°/100 Build & Turn	
764.0	767.7	9.68	224.46	-54.4	-23.0	55.4	60.6	Hold 9.68 Inclination	
5505.5	5577.7	9.68	224.46	-631.9	-589.7	864.3	869.7	Start Drop -1.50	
6148.0	6223.3	0.00	0.00	-670.7	-627.8	918.7	924.1	Vertical	
6248.0	6323.3	0.00	0.00	-670.7	-627.8	918.7	924.1	Top Gas	
8398.0	8473.3	0.00	0.00	-670.7	-627.8	918.7	924.1	TD at 8473.3	