

---

# **OXY GRAND JUNCTION EBUSINESS**

---

**CC 697-17-08B  
GRAND VALLEY  
Garfield County , Colorado**

**Cement Surface Casing  
09-Jun-2010**

**Post Job Report**

## The Road to Excellence Starts with Safety

Sold To #: 344034	Ship To #: 2788392	Quote #:	Sales Order #: 7421604
Customer: OXY GRAND JUNCTION EBUSINESS	Customer Rep: Benevides, Simon		
Well Name: CC	Well #: 697-17-08B	API/UWI #: 05-045-18176	
Field: GRAND VALLEY	City (SAP): PARACHUTE	County/Parish: Garfield	State: Colorado
Lat: N 39.531 deg. OR N 39 deg. 31 min. 50.174 secs.	Long: W 108.233 deg. OR W -109 deg. 46 min. 0.458 secs.		
Contractor: OXY	Rig/Platform Name/Num: H&P 330		
Job Purpose: Cement Surface Casing			
Well Type: Development Well	Job Type: Cement Surface Casing		
Sales Person: DUNNING, DUSTIN	Srvc Supervisor: NELSON, RYAN	MBU ID Emp #: 386514	

## Job Personnel

HES Emp Name	Exp Hrs	Emp #	HES Emp Name	Exp Hrs	Emp #	HES Emp Name	Exp Hrs	Emp #
BLAKE, TIMOTHY Kenn	11	459313	HAYES, DIRK A	11	336768	LUNCEFORD, STEVEN John	11	457512
NELSON, RYAN Cody	11	386514	REEVES, BRANDON W	11	287883			

## Equipment

HES Unit #	Distance-1 way	HES Unit #	Distance-1 way	HES Unit #	Distance-1 way	HES Unit #	Distance-1 way
10000394	120 mile	10567589C	120 mile	10783493	120 mile	10784064	120 mile
10822007	120 mile	10856450	120 mile	10856464	120 mile	10867425	120 mile
10897891	120 mile	10951245	120 mile	10995027	120 mile	11006314	120 mile

## Job Hours

Date	On Location Hours	Operating Hours	Date	On Location Hours	Operating Hours	Date	On Location Hours	Operating Hours
6-8-10	8	6	6-9-10	3	2			

**TOTAL** Total is the sum of each column separately

## Job

Formation Name	Top	Bottom	Called Out	Date	Time	Time Zone
Formation Depth (MD)			On Location	08 - Jun - 2010	10:30	MST
Form Type		BHST	Job Started	08 - Jun - 2010	16:00	MST
Job depth MD	2950. ft	Job Depth TVD	Job Completed	08 - Jun - 2010	17:35	MST
Water Depth		Wk Ht Above Floor	Departed Loc	09 - Jun - 2010	01:30	MST
Perforation Depth (MD)	From	To		09 - Jun - 2010	03:00	MST

## Well Data

Description	New / Used	Max pressure psig	Size in	ID in	Weight lbm/ft	Thread	Grade	Top MD ft	Bottom MD ft	Top TVD ft	Bottom TVD ft
Open Hole				14.75				0	2950.		
Surface Casing			9.625	8.921	36.			0	2922.		

Sales/Rental/3<sup>rd</sup> Party (HES)

Description	Qty	Qty uom	Depth	Supplier
PLUG,CMTG,TOP,9 5/8,HWE,8.16 MIN/9.06 MA	1	EA		
R/A DENSOMETER W/CHART RECORDER,/JOB,ZI	1	JOB		
ADC (AUTO DENSITY CTRL) SYS, /JOB,ZI	1	JOB		

## Tools and Accessories

Type	Size	Qty	Make	Depth	Type	Size	Qty	Make	Depth	Type	Size	Qty	Make
Guide Shoe					Packer					Top Plug	9.625	1	HES
Float Shoe					Bridge Plug					Bottom Plug			
Float Collar					Retainer					SSR plug set			
Insert Float										Plug Container	9.625	1	HES
Stage Tool										Centralizers			

## Miscellaneous Materials

Gelling Agt	Conc	Surfactant	Conc	Acid Type	Qty	Conc	%
Treatment Fld	Conc	Inhibitor	Conc	Sand Type	Size		Qty

Fluid Data									
Stage/Plug #: 1									
Fluid #	Stage Type	Fluid Name	Qty	Qty uom	Mixing Density lbm/gal	Yield ft <sup>3</sup> /sk	Mix Fluid Gal/sk	Rate bbl/min	Total Mix Fluid Gal/sk
1	WATER SPACER		20.00	bbl	8.33	.0	.0	.0	
2	SUPER FLUSH 101	SUPER FLUSH 101 - SBM (12199)	20.00	bbl	10.	.0	.0	.0	
3	WATER SPACER		20.00	bbl	8.33	.0	.0	.0	
4	Lead Cement	VERSACEM (TM) SYSTEM (452010)	1240.0	sacks	12.3	2.33	12.62		12.62
5	Tail Cement	VERSACEM (TM) SYSTEM (452010)	160.0	sacks	12.8	2.07	10.67		10.67
6	DISPLACEMENT		222.00	bbl	8.33	.0	.0	.0	
7	Topout Cement	HALCEM (TM) SYSTEM (452986)	297.0	sacks	14.	1.78	7.67		7.67
Calculated Values		Pressures		Volumes					
Displacement	221.9	Shut In: Instant		Lost Returns		Cement Slurry	661.6	Pad	
Top Of Cement	0	5 Min		Cement Returns		Actual Displacement	221.9	Treatment	
Frac Gradient		15 Min		Spacers		Load and Breakdown		Total Job	
Rates									
Circulating		Mixing	6	Displacement	5	Avg. Job			5.6
Cement Left In Pipe	Amount	52 ft	Reason	Shoe Joint					
Frac Ring # 1 @	ID	Frac ring # 2 @	ID	Frac Ring # 3 @	ID	Frac Ring # 4 @	ID		
The Information Stated Herein Is Correct				Customer Representative Signature					

*The Road to Excellence Starts with Safety*

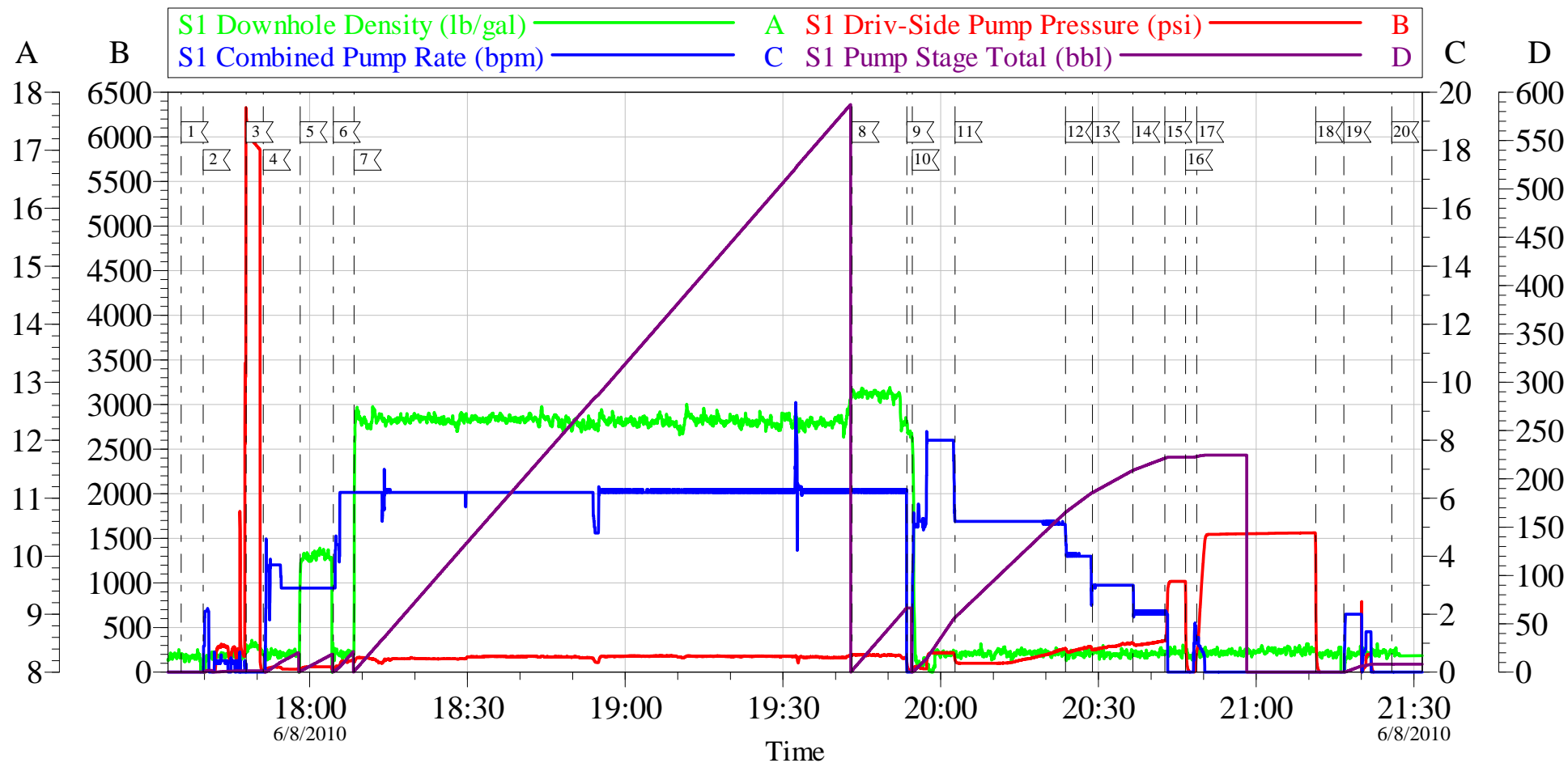
<b>Sold To #:</b> 344034		<b>Ship To #:</b> 2788392		<b>Quote #:</b>		<b>Sales Order #:</b> 7421604	
<b>Customer:</b> OXY GRAND JUNCTION EBUSINESS				<b>Customer Rep:</b> Benevides, Simon			
<b>Well Name:</b> CC			<b>Well #:</b> 697-17-08B			<b>API/UWI #:</b> 05-045-18176	
<b>Field:</b> GRAND VALLEY		<b>City (SAP):</b> PARACHUTE		<b>County/Parish:</b> Garfield		<b>State:</b> Colorado	
<b>Legal Description:</b>							
<b>Lat:</b> N 39.531 deg. OR N 39 deg. 31 min. 50.174 secs.				<b>Long:</b> W 108.233 deg. OR W -109 deg. 46 min. 0.458 secs.			
<b>Contractor:</b> OXY			<b>Rig/Platform Name/Num:</b> H&P 330				
<b>Job Purpose:</b> Cement Surface Casing						<b>Ticket Amount:</b>	
<b>Well Type:</b> Development Well			<b>Job Type:</b> Cement Surface Casing				
<b>Sales Person:</b> DUNNING, DUSTIN			<b>Srvc Supervisor:</b> NELSON, RYAN			<b>MBU ID Emp #:</b> 386514	

Activity Description	Date/Time	Cht #	Rate bbl/min	Volume bbl		Pressure psig		Comments
				Stage	Total	Tubing	Casing	
Call Out	06/08/2010 11:30							
Arrive At Loc	06/08/2010 16:00							Rig done running casing
Pre-Rig Up Safety Meeting	06/08/2010 16:10							
Rig-Up Equipment	06/08/2010 16:15							
Pre-Job Safety Meeting	06/08/2010 17:30							
Start Job	06/08/2010 17:38							TD-2950' TP-2922' SJ-52' CASING 9 5/8" 36# HOLE 14 3/4"
Other	06/08/2010 17:38			1.5			32.0	Fill Lines
Test Lines	06/08/2010 17:46						6300.0	
Pump Spacer 1	06/08/2010 17:49		3	20			40.0	Fresh Water
Pump Spacer 2	06/08/2010 17:56		3	20			70.0	Super Flush
Pump Spacer 1	06/08/2010 18:02		4	20			140.0	Fresh water
Pump Lead Cement	06/08/2010 18:06		6	514.6			210.0	1240 sks 12.3 ppg 2.33 yield 12.62 gal/sk
Pump Tail Cement	06/08/2010 19:41		6	59			200.0	160 sks 12.8 ppg 2.07 yield 10.67 gal/sk
Shutdown	06/08/2010 19:52							
Drop Top Plug	06/08/2010 19:52							
Pump Displacement	06/08/2010 19:53		8	221.9			230.0	Fresh Water
Slow Rate	06/08/2010 20:01		5	50			280.0	

Activity Description	Date/Time	Cht #	Rate bbl/min	Volume bbl		Pressure psig		Comments
				Stage	Total	Tubing	Casing	
Slow Rate	06/08/2010 20:22		4	160			260.0	
Slow Rate	06/08/2010 20:26		3	180			345.0	
Slow Rate	06/08/2010 20:35		2	210			370.0	
Bump Plug	06/08/2010 20:41		2	221.9			1037.0	
Check Floats	06/08/2010 20:45							Floats held
Pressure Test	06/08/2010 20:46						1591.0	Pressure test casing for 20 min
Other	06/08/2010 21:15		2	8.5		200.0		Clear parasite with sugar water
End Job	06/08/2010 21:25							No circulation prior to or during the job. Pipe Static during job. Super Flush Truck hours-5
Start Job	06/08/2010 23:13							
Pump Cement	06/08/2010 23:18		3	55		125.0		14 ppg 1.78 yield 7.67 gal/sk. This bulk truck was left on location with cement from last well.
Clean Lines	06/08/2010 23:34		3	2		120.0		Fresh water
End Job	06/08/2010 23:38							No cement to surface
Start Job	06/09/2010 01:14							
Pump Cement	06/09/2010 01:15		3	33		130.0		14 ppg 1.78 yield 7.67 gal/sk
Clean Lines	06/09/2010 01:26		3	2		124.0		Fresh water
End Job	06/09/2010 01:30							Cement to surface. Thank you for using Halliburton-Ryan Nelson & Crew

# OXY

## 9 5/8" Surface



Customer: OXY  
Well Description: CC 697-17-08B  
Company Rep: Simon Benevides

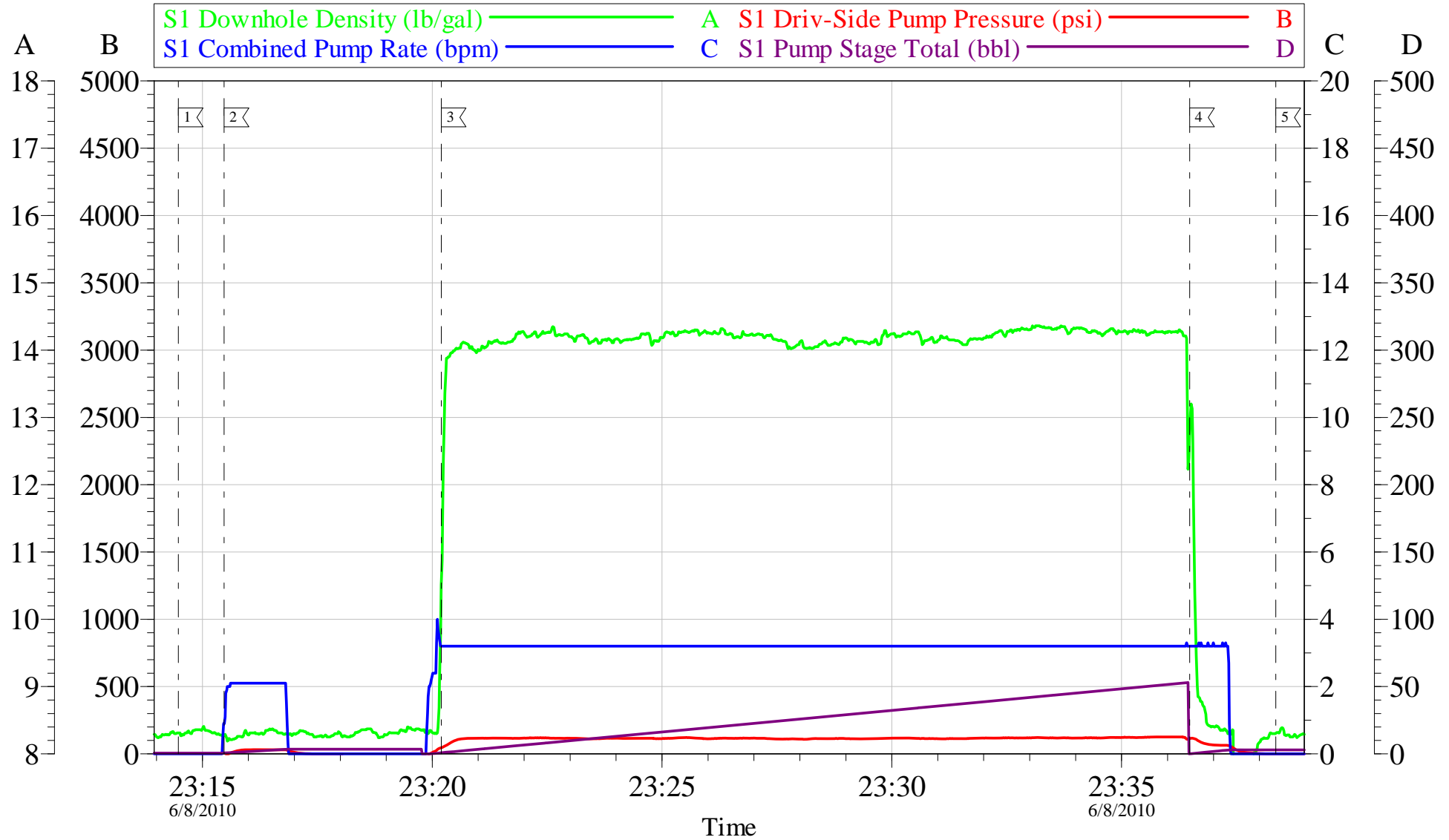
Job Date: 08-Jun-2010  
Job Type: Surface  
Cement Supervisor: Ryan Nelson

Sales Order #: 7421604  
ADC Used: Yes  
Elite #: 3/ Brandon Reeves

OptiCem v6.4.0  
08-Jun-10 22:11

# OXY

## Top Out #1



Customer: OXY  
 Well Description: CC 697-17-08B  
 Company Rep: Simon Benevides

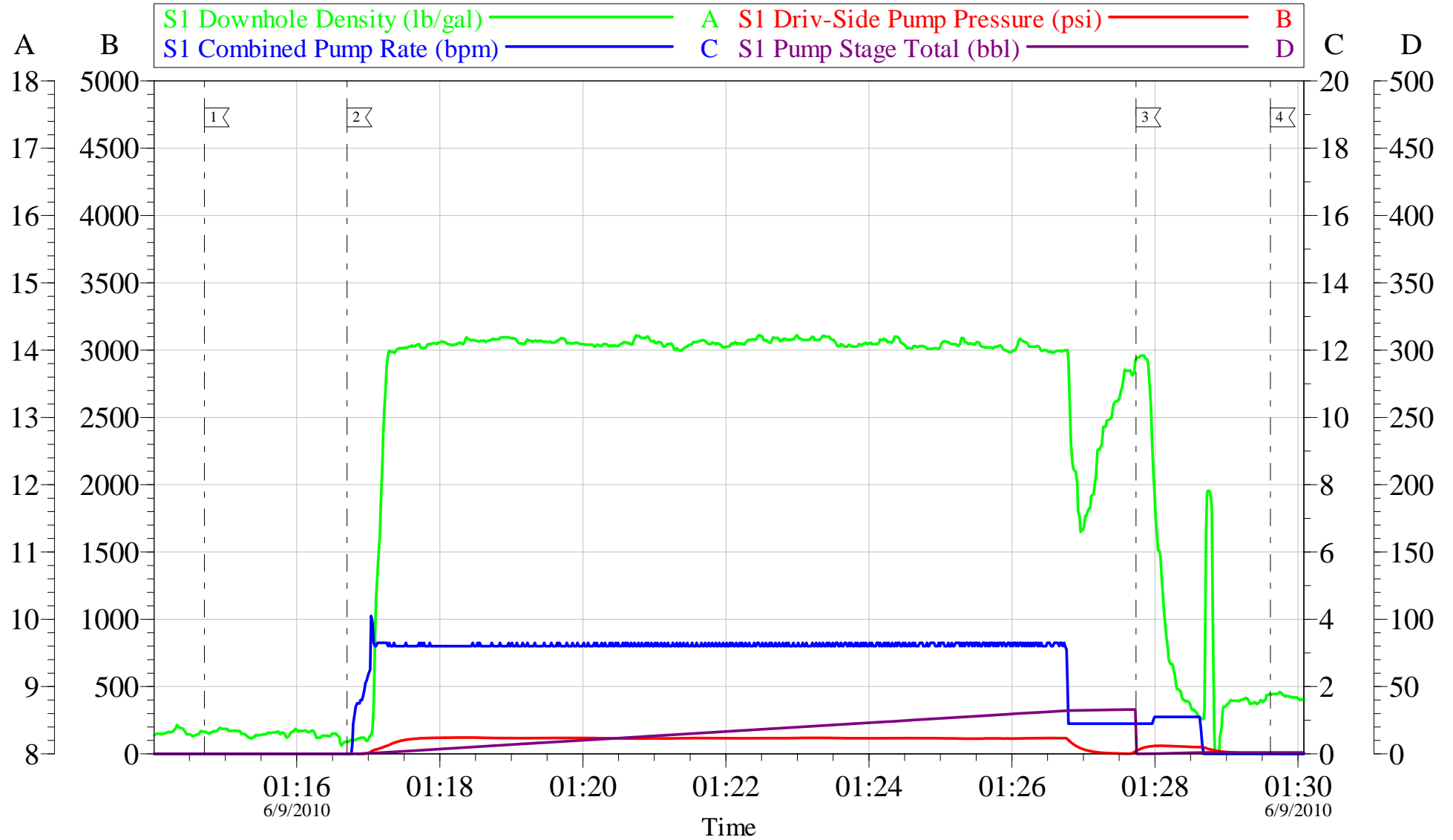
Job Date: 08-Jun-2010  
 Job Type: Top Out  
 Cement Supervisor: Ryan Nelson

Sales Order #: 7421604  
 ADC Used: Yes  
 Elite #: 3/Brandon Reeves

OptiCem v6.4.0  
 08-Jun-10 23:42

# OXY

## Top Out #2



Customer: OXY  
 Well Description: CC 697-17-08B  
 Company Rep: Simon Benevides

Job Date: 09-Jun-2010  
 Job Type: Top Out  
 Cement Supervisor: Ryan Nelson

Sales Order #: 7421604  
 ADC Used: Yes  
 Elite #: 3/Brandon Reeves

OptiCem v6.4.0  
 09-Jun-10 01:41