
OXY GRAND JUNCTION EBUSINESS

**CC 697-16-09B
GRAND VALLEY
Garfield County , Colorado**

Cement Surface Casing
15-Jun-2010

Post Job Report

The Road to Excellence Starts with Safety

Sold To #: 344034		Ship To #: 2789655		Quote #:		Sales Order #: 7433378	
Customer: OXY GRAND JUNCTION EBUSINESS				Customer Rep: Benevides, Simon			
Well Name: CC			Well #: 697-16-09B			API/UWI #: 05-045-17693	
Field: GRAND VALLEY		City (SAP): PARACHUTE		County/Parish: Garfield		State: Colorado	
Lat: N 39.531 deg. OR N 39 deg. 31 min. 49.955 secs.				Long: W 108.233 deg. OR W -109 deg. 46 min. 0.592 secs.			
Contractor: OXY			Rig/Platform Name/Num: H&P 330				
Job Purpose: Cement Surface Casing							
Well Type: Development Well				Job Type: Cement Surface Casing			
Sales Person: DUNNING, DUSTIN			Srvc Supervisor: ERIC CARTER			MBU ID Emp #: 345598	
Job Personnel							
HES Emp Name	Exp Hrs	Emp #	HES Emp Name	Exp Hrs	Emp #	HES Emp Name	Exp Hrs
BLUST, CHARLES Thomas	13.5	386662	CARTER, ERIC Earl	13.5	345598	KUKUS, CRAIG A	13.5
STEELE, BENJAMIN F	13.5	458599	TRIPLETT, MICHEAL Anthony	13.5	447908	ZUMWALT, ORVILLE Raymond	13.5
Equipment							
HES Unit #	Distance-1 way	HES Unit #	Distance-1 way	HES Unit #	Distance-1 way	HES Unit #	Distance-1 way
10822535	120 mile	10857016	120 mile	10867423	120 mile	10897887	120 mile
10938658	120 mile	10951251	120 mile	11360883	120 mile		
Job Hours							
Date	On Location Hours	Operating Hours	Date	On Location Hours	Operating Hours	Date	On Location Hours
6/15/10	13.5	3.5					
TOTAL		<i>Total is the sum of each column separately</i>					
Job				Job Times			
Formation Name				Date	Time	Time Zone	
Formation Depth (MD)	Top	Bottom	2705 FT.	Called Out	14 - Jun - 2010	23:00	CST
Form Type	BHST			On Location	15 - Jun - 2010	04:30	CST
Job depth MD	2705. ft	Job Depth TVD	2705. ft	Job Started	15 - Jun - 2010	09:28	CST
Water Depth	Wk Ht Above Floor 5. ft			Job Completed	15 - Jun - 2010	15:08	CST
Perforation Depth (MD)	From	To		Departed Loc	15 - Jun - 2010	16:00	CST
Well Data							
Description	New / Used	Max pressure psig	Size in	ID in	Weight lbm/ft	Thread	Grade
Sales/Rental/3rd Party (HES)							
Description				Qty	Qty uom	Depth	Supplier
PLUG,CMTG,TOP,9 5/8,HWE,8.16 MIN/9.06 MA				1	EA		
Tools and Accessories							
Type	Size	Qty	Make	Depth	Type	Size	Qty
Guide Shoe					Packer		
Float Shoe					Bridge Plug		
Float Collar					Retainer		
Insert Float							
Stage Tool							
Miscellaneous Materials							
Gelling Agt		Conc		Surfactant		Conc	
Treatment Fld		Conc		Inhibitor		Conc	
				Acid Type		Qty	Conc %
				Sand Type		Size	Qty

Fluid Data										
Stage/Plug #: 1										
Fluid #	Stage Type	Fluid Name	Qty	Qty uom	Mixing Density lbm/gal	Yield ft ³ /sk	Mix Fluid Gal/sk	Rate bbl/min	Total Mix Fluid Gal/sk	
1	WATER SPACER		20.00	bbl	8.33	.0	.0	6		
2	SUPER FLUSH 101	SUPER FLUSH 101 - SBM (12199)	20.00	bbl	10.	.0	.0	6		
3	WATER SPACER		20.00	bbl	.	.0	.0	6		
4	Lead Cement	VERSACEM (TM) SYSTEM (452010)	1057	sacks	12.3	2.33	12.62	5	12.62	
		12.62 Gal	FRESH WATER							
5	Tail Cement	VERSACEM (TM) SYSTEM (452010)	160.0	sacks	12.8	2.07	10.67	5	10.67	
		10.67 Gal	FRESH WATER							
6	DISPLACEMENT		204.00	bbl	.	.0	.0	7		
7	Top Out Cement	VARICEM (TM) CEMENT (452009)	75	sacks	14.	1.78	7.67	2	7.67	
		7.67 Gal	FRESH WATER							
Calculated Values			Pressures		Volumes					
Displacement	203.5	Shut In: Instant		Lost Returns	YES	Cement Slurry	498.6	Pad		
Top Of Cement	SURFACE	5 Min		Cement Returns	35	Actual Displacement	203.5	Treatment		
Frac Gradient		15 Min		Spacers	60	Load and Breakdown		Total Job	762.1	
Rates										
Circulating	RIG	Mixing	5	Displacement	7	Avg. Job	6			
Cement Left In Pipe	Amount	48 ft	Reason	Shoe Joint						
Frac Ring # 1 @	ID	Frac ring # 2 @	ID	Frac Ring # 3 @	ID	Frac Ring # 4 @	ID			
The Information Stated Herein Is Correct				Customer Representative Signature						

The Road to Excellence Starts with Safety

Sold To #: 344034		Ship To #: 2789655		Quote #:		Sales Order #: 7433378	
Customer: OXY GRAND JUNCTION EBUSINESS				Customer Rep: Benevides, Simon			
Well Name: CC			Well #: 697-16-09B		API/UWI #: 05-045-17693		
Field: GRAND VALLEY		City (SAP): PARACHUTE		County/Parish: Garfield		State: Colorado	
Legal Description:							
Lat: N 39.531 deg. OR N 39 deg. 31 min. 49.955 secs.				Long: W 108.233 deg. OR W -109 deg. 46 min. 0.592 secs.			
Contractor: OXY			Rig/Platform Name/Num: H&P 330				
Job Purpose: Cement Surface Casing						Ticket Amount:	
Well Type: Development Well			Job Type: Cement Surface Casing				
Sales Person: DUNNING, DUSTIN			Srv Supervisor: ERIC CARTER			MBU ID Emp #: 345598	

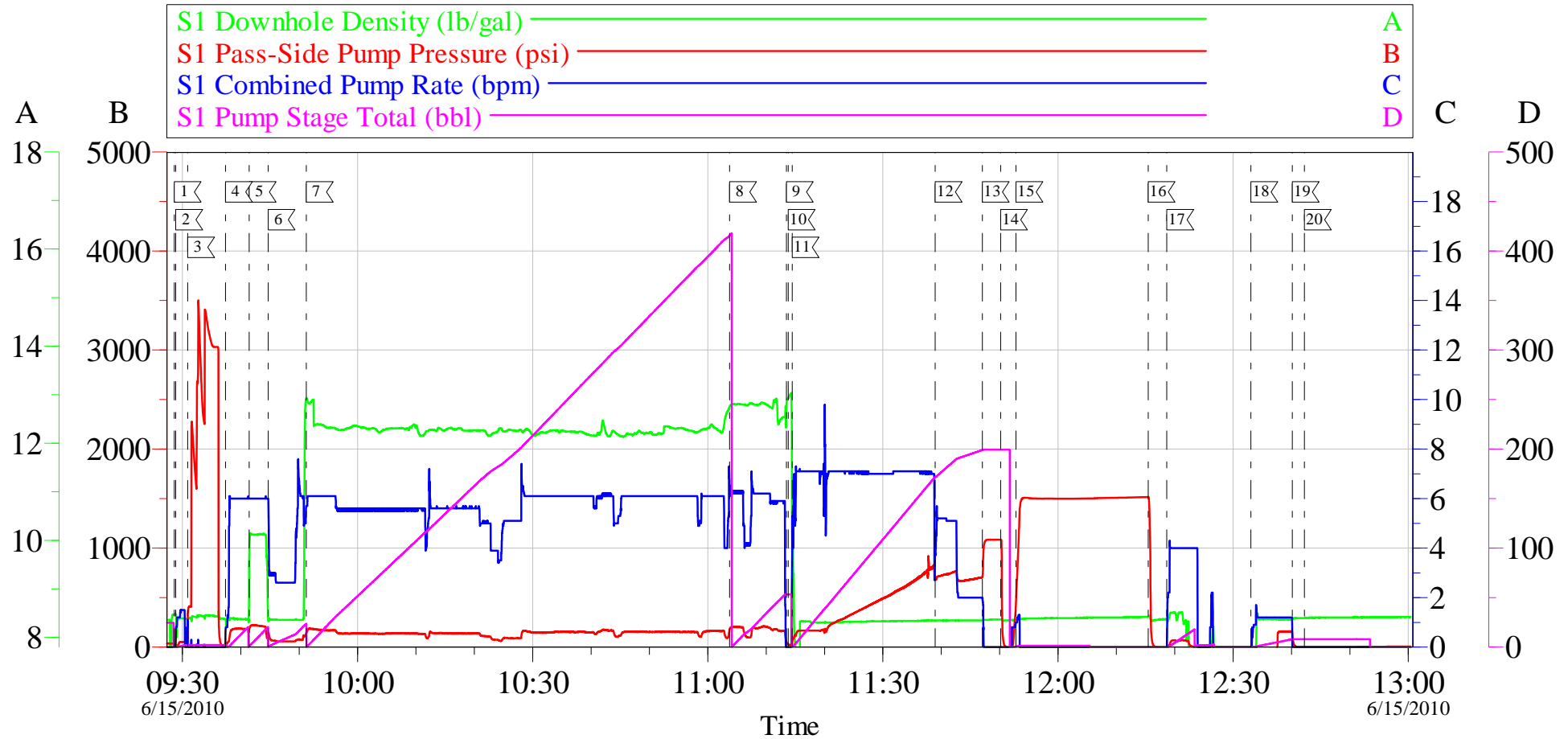
Activity Description	Date/Time	Cht #	Rate bbl/min	Volume bbl		Pressure psig		Comments
				Stage	Total	Tubing	Casing	
Call Out	06/14/2010 23:00							
Depart Yard Safety Meeting	06/15/2010 01:20							ATTENDED BY ALL HES CREW
Crew Leave Yard	06/15/2010 01:30							
Arrive At Loc	06/15/2010 04:30							RIG RUNNING CASING
Assessment Of Location Safety Meeting	06/15/2010 05:20							ATTENDED BY ALL HES CREW
Other	06/15/2010 07:00							SPOT EQUIPMENT
Pre-Rig Up Safety Meeting	06/15/2010 07:20							ATTENDED BY ALL HES CREW
Rig-Up Equipment	06/15/2010 07:30							
Pre-Job Safety Meeting	06/15/2010 09:00							ATTENDED BY ALL HES CREW, RIG CREW AND COMPANY REP, RIG DID NOT GET CIRCULATION PRIOR TO JOB.
Start Job	06/15/2010 09:28							TP 2681', TD 2705', SJ 48, FC 2633', MW 9 PPG, CASING 9.625", 36#, J-55, HOLE 14.75"
Other	06/15/2010 09:28							PRIME LINES
Test Lines	06/15/2010 09:30							PRESSURED UP TO PSI, PRESSURE HELD
Pump Spacer 1	06/15/2010 09:37			20			180.0	FRESH WATER
Pump Spacer 2	06/15/2010 09:41			20			224.0	SUPER FLUSH
Pump Spacer 1	06/15/2010 09:44			20			110.0	FRESH WATER

Activity Description	Date/Time	Cht #	Rate bbl/min	Volume bbl		Pressure psig		Comments
				Stage	Total	Tubing	Casing	
Pump Lead Cement	06/15/2010 09:51			514.6			170.0	1057 SKS MIXED AT 12.3 PPG, 2.33 YIELD, 12.62 GL/SK, AT COMPANY REP'S REQUEST HES DID NOT PUMP 75 BBLS OF LEAD CEMENT.
Pump Tail Cement	06/15/2010 11:03			59			200.0	160 SKS MIXED AT 12.8 PPG, 2.07 YIELD, 10.67 GL/SK
Shutdown	06/15/2010 11:13							
Drop Top Plug	06/15/2010 11:13							COMPANY REP VERIFIED THAT PLUG LAUNCHED
Pump Displacement	06/15/2010 11:14			193.5			840.0	FRESH WATER
Slow Rate	06/15/2010 11:38			10			690.0	
Bump Plug	06/15/2010 11:47						1024.0	PLUG LANDED
Check Floats	06/15/2010 11:50							FLOATS HELD
Shut-In Pressure @ 20 Minutes	06/15/2010 11:52						1505.0	PRESSURE TEST CASING, PRESSURE HELD
Release Casing Pressure	06/15/2010 12:15							
Other	06/15/2010 12:33			10		90.0	90.0	PUMP THROUGH PARASITE
End Job	06/15/2010 12:42							LOST CIRCULATION AT 170 BBLS OF LEAD PUMPED, CIRCULATION RETURNED AT 270 BBLS OF LEAD PUMPED, 35 BBLS CEMENT TO SURFACE, PIPE WAS NOT MOVED DURING JOB
Post-Job Safety Meeting (Pre Rig-Down)	06/15/2010 12:45							ATTENDED BY ALL HES CREW
Rig-Up Equipment	06/15/2010 12:55							RIG UP TO PUMP TOP OUT
Start Job	06/15/2010 13:51							

Activity Description	Date/Time	Cht #	Rate bbl/ min	Volume bbl		Pressure psig		Comments
				Stage	Total	Tubing	Casing	
Other	06/15/2010 13:51							CLEAR LINES
Pump Cement	06/15/2010 13:58			23.2		56.0		75 SKS TOTAL MIXED AT 14 PPG, 1.78 YIELD, 7.67 GL.SK, BROUGHT CEMENT TO SURFACE
Shutdown	06/15/2010 14:08							SHUTDOWN TO LET CEMENT FALL
Pump Cement	06/15/2010 14:10			0.5		58.0		
Shutdown	06/15/2010 14:10							
Clean Lines	06/15/2010 14:12							CLEANED LINES TO PIT
Clean Lines	06/15/2010 14:13							CLEANED 1" LINES
Shutdown	06/15/2010 14:14							
End Job	06/15/2010 14:14							CEMENT DID NOT FALL
Post-Job Safety Meeting (Pre Rig-Down)	06/15/2010 14:20							ATTENDED BY ALL HES CREW
Comment	06/15/2010 15:08							COMPANY REP RELEASED HES CREW.
Rig-Down Equipment	06/15/2010 15:10							
Depart Location Safety Meeting	06/15/2010 15:50							ATTENDED BY ALL HES CREW
Crew Leave Location	06/15/2010 16:00							THANK YOU FOR USING HALLIBURTON CEMENT, ERIC CARTER AND CREW.

OXY

9.625" SURFACE/CC 697-16-09B



Local Event Log			
1 START JOB	09:28:36	2 PRIME LINES	09:28:51
3 TEST LINES	09:30:53	4 PUMP H2O SPACER	09:37:23
5 PUMP SUPER FLUSH	09:41:27	6 PUMP H2O SPACER	09:44:41
7 PUMP LEAD CEMENT	09:51:13	8 PUMP TAIL CEMENT	11:03:45
9 SHUTDOWN	11:13:28	10 DROP TOP PLUG	11:13:47
11 PUMP H2O DISPLACEMENT	11:14:27	12 SLOW RATE	11:38:58
13 BUMP PLUG	11:47:02	14 CHECK FLOATS	11:50:10
15 PRESSURE UP CASING	11:52:48	16 RELEASE CASING PRESSURE	12:15:27
17 CLEAN LINES TO PIT	12:18:39	18 PUMP THROUGH PARASITE	12:33:03
19 SHUTDOWN	12:40:08	20 END JOB	12:42:13

Customer: OXY GRAND JUNCTION EBUSINESS
 Well Description: CC 697-16-09B
 Company Rep: SIMON B.

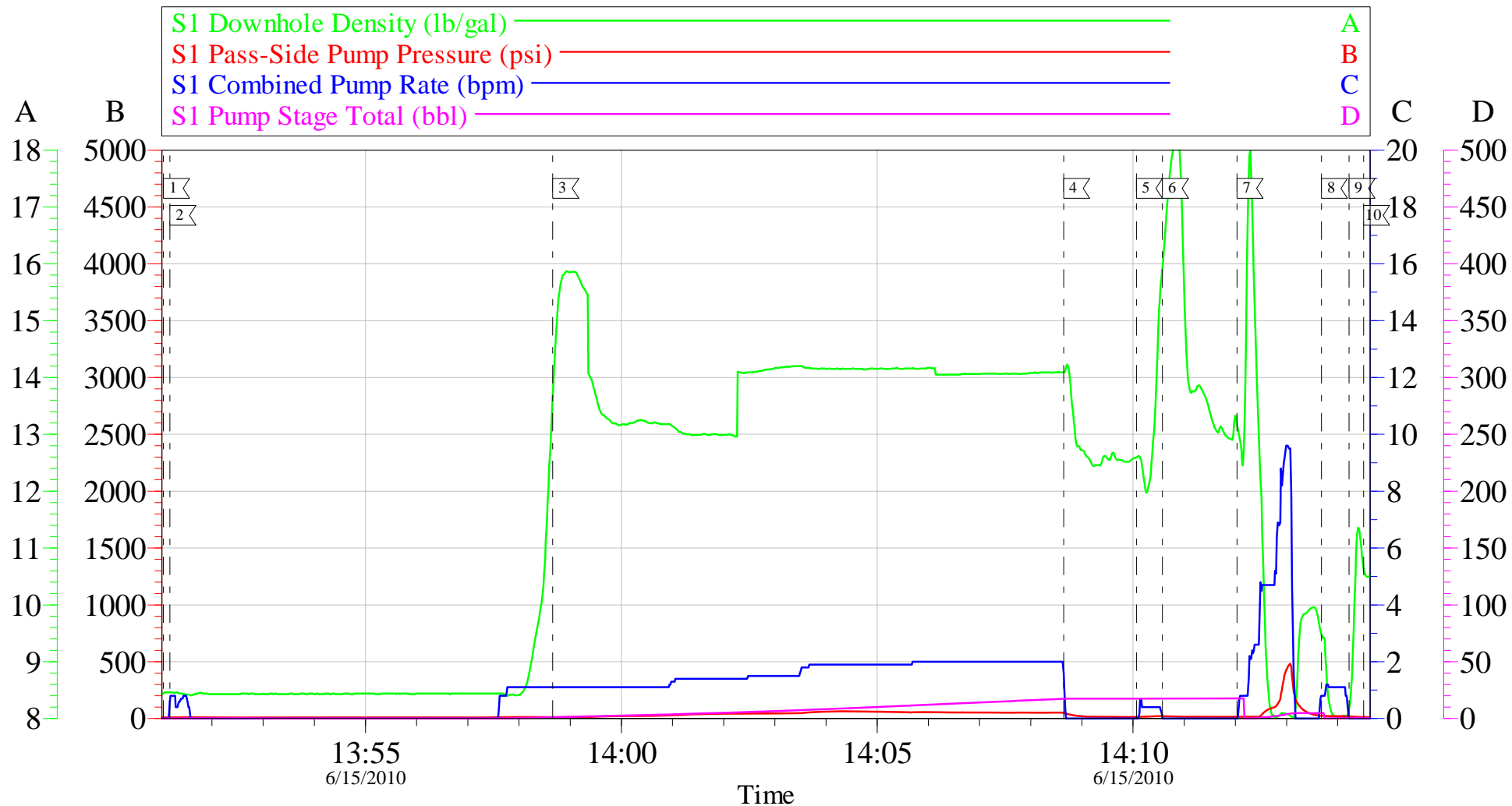
Job Date: 15-Jun-2010
 Job Type: 9.625" SURFACE
 Cement Supervisor: ERIC CARTER

Sales Order #: 7433378
 ADC Used: YES
 Elite #/Operator: 11/BEN STEELE

OptiCem v6.4.0
 15-Jun-10 13:00

OXY

TOP OUT/CC 697-16-09B



Local Event Log			
1	START JOB	13:51:03	2
2	CLEAR LINES	13:51:11	3
3	PUMP CEMENT	13:58:40	4
4	SHUTDOWN	14:08:39	5
5	PUMP CEMENT	14:10:04	6
6	SHUTDOWN	14:10:35	7
7	CLEAN LINES TO PIT	14:12:02	8
8	CLEAN 1" LINES	14:13:41	9
9	SHUTDOWN	14:14:13	10
10	END JOB	14:14:30	

Customer: OXY
Well Description: CC-697-16-09B
Company Rep: SIMON B.

Job Date: 15-Jun-2010
Job Type: TOP OUT
Cement Supervisor: ERIC CARTER

Sales Order #: 7433378
ADC Used: YES
Elite #/Operator: 11/BEN STEELE

OptiCem v6.4.0
15-Jun-10 14:28