



Drilling Services

COMPLETION

BERRY PETROLEUM COMPANY

GRANLEE 0M01DR B10 696

GARFIELD COUNTY, CO

WELL PLAN: 1

APRIL 24, 2008

Weatherford International Ltd.

2690 Oil Drive
Casper, WY 82604
+1-307-265-1413 Main
+1-307-235-3958 Fax
www.weatherford.com



Berry Petroleum Company

GRANLEE OM01DR B10 696
829' FNL, 1417' FEL
SECTION 10 T6S R96W
GARFIELD COUNTY, CO

-DRILLING NOTE-
TO ACCOUNT FOR THE 240° DRIFT IN AZIMUTH, AIM
FOR THE NE SIDE OF PBHL, AND
BE IN THE TARGET WINDOW BY THE TOP GAS AND STAY
WITHIN THE WINDOW TO TD. DO NOT GO OUTSIDE THE
WINDOW.

SECTION DETAILS										
Sec	MD	Inc	Azi	TVD	+N/-S	+E/-W	DLeg	TFace	VSec	Target
1	1778.00	2.94	233.35	1771.49	80.90	-54.05	0.00	0.00	-57.86	
2	2937.83	20.88	93.53	2908.05	50.01	130.88	2.00	-144.29	128.33	
3	4790.23	20.88	93.53	4638.86	9.42	789.73	0.00	0.00	788.37	
4	6181.97	0.00	0.00	6000.00	-6.00	1040.00	1.50	180.00	1039.10	
5	10860.97	0.00	0.00	10679.00	-6.00	1040.00	0.00	0.00	1039.10	PBHL OM01DR

EXT SVY										
Survey: Survey #1 (OM01DR B10 696/1)										
No	MD	Inc	Az	TVD	+N/-S	+E/-W	DLeg	TFace	VSec	
134	10775.00	5.19	234.60	10585.56	-82.59	959.77	0.00	0.00	962.62	

WELL DETAILS								
Name	+N/-S	+E/-W	Northing	Easting	Latitude	Longitude	Slot	
OM01DR B10 696	158.00	25.70	1632922.26	2269396.91	39°32'33.152N	108°05'27.712W	N/A	

TARGET DETAILS						
Name	TVD	+N/-S	+E/-W	Northing	Easting	Shape
PBHL	10629.00	-147.00	-731.72	1632657.89	2268634.60	Rectangle (100x200)

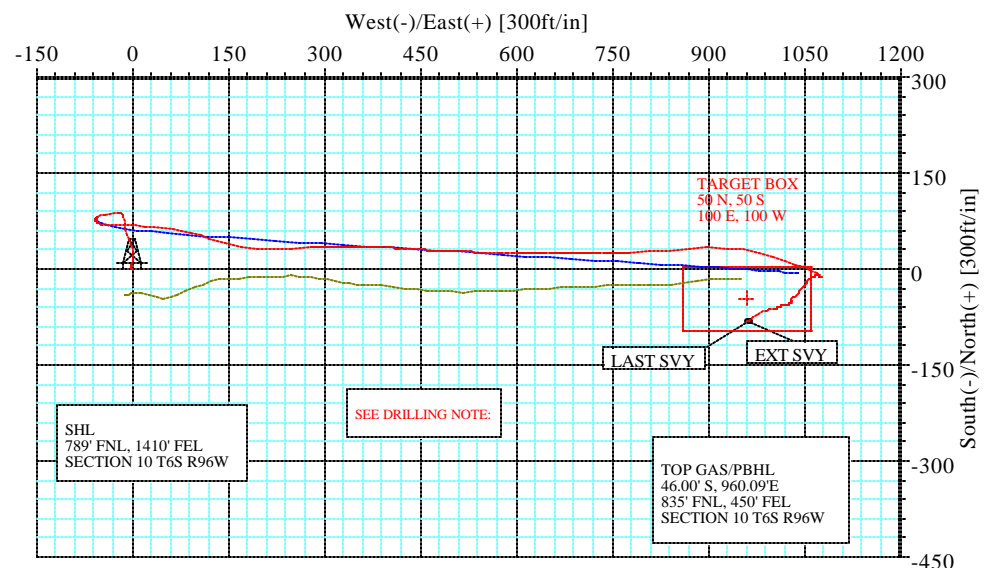
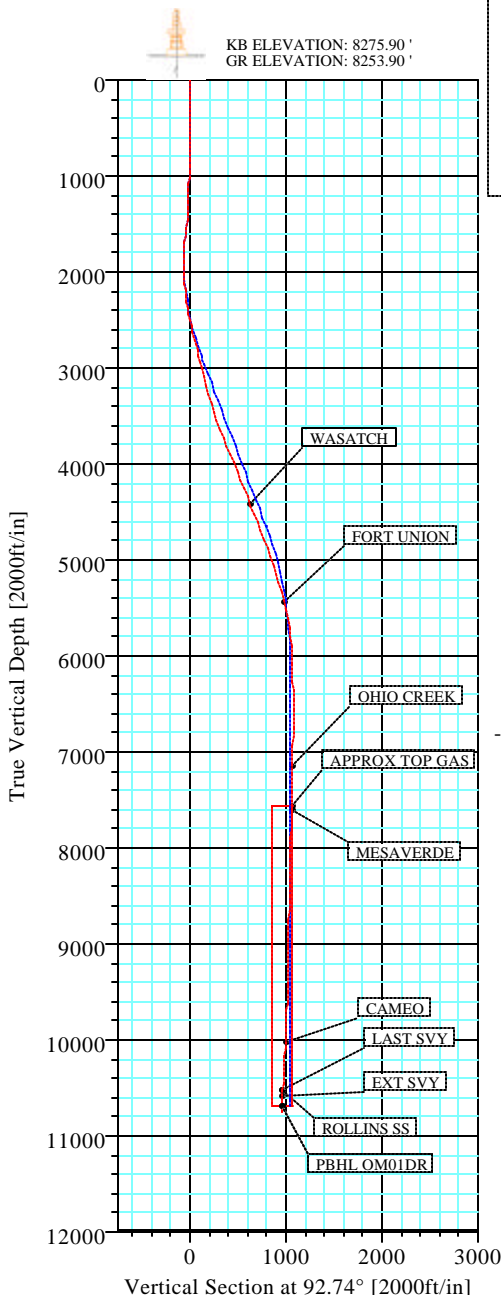
FIELD DETAILS	
GARFIELD COUNTY (NAD 83) COLORADO	
Geodetic System: US State Plane Coordinate System 1983	
Ellipsoid: GRS 1980	
Zone: Colorado, Central Zone	
Magnetic Model: bggm2007	
System Datum: Mean Sea Level	
Local North: True North	

SITE DETAILS	
GRANLEE B10 PAD SECTION 10 T6S R96W 947' FNL, 1436' FEL	
Site Centre Latitude: 39°32'31.590N Longitude: 108°05'28.040W	
Ground Level: 8253.90	
Positional Uncertainty: 0.00	
Convergence: -1.63	

LEGEND	
—	OM01DR B10 696, 1, Plan #4
—	OM01DR B10 696 (1)
—	Survey #1

	Azimuths to True North
	Magnetic North: 10.85°
Magnetic Field	
Strength: 52629nT	
Dip Angle: 65.86°	
Date: 3/27/2008	
Model: bggm2007	

TOTAL CORRECTION TO TRUE NORTH 10.85°



Survey: Survey #1 (OM01DR B10 696/1)

Created By: Tracy R. Williams

Date: 4/24/2008

Company: BERRY PETROLEUM COMPANY Field: GARFIELD COUNTY (NAD 83) Site: GRANLEE B10 PAD Well: OM01DR B10 696 Wellpath: 1	Date: 4/24/2008 Time: 08:19:26 Page: 1 Co-ordinate(NE) Reference: Well: OM01DR B10 696, True North Vertical (TVD) Reference: SITE 8275.9 Section (VS) Reference: Well (0.00N,0.00E,92.74Azi) Survey Calculation Method: Minimum Curvature Db: Sybase
--	--

Field: GARFIELD COUNTY (NAD 83)
COLORADO

Map System: US State Plane Coordinate System 1983
Geo Datum: GRS 1980
Sys Datum: Mean Sea Level

Map Zone: Colorado, Central Zone
Coordinate System: Well Centre
Geomagnetic Model: bggm2007

Site: GRANLEE B10 PAD
SECTION 10 T6S R96W
947' FNL, 1436' FEL

Site Position:	Northing: 1632765.06 ft	Latitude: 39 32 31.590 N	
From: Geographic	Easting: 2269366.72 ft	Longitude: 108 5 28.040 W	
Position Uncertainty: 0.00 ft		North Reference: True	
Ground Level: 8253.90 ft		Grid Convergence: -1.63 deg	

Well: OM01DR B10 696
829' FNL, 1417' FEL

Slot Name:

Well Position: +N/-S 158.00 ft	Northing: 1632922.26 ft	Latitude: 39 32 33.152 N	
+E/-W 25.70 ft	Easting: 2269396.91 ft	Longitude: 108 5 27.712 W	
Position Uncertainty: 0.00 ft			

Wellpath: 1

Current Datum: SITE
Magnetic Data: 3/27/2008
Field Strength: 52629 nT
Vertical Section: Depth From (TVD)
ft

Height: 8275.90 ft

Drilled From: Surface
Tie-on Depth: 0.00 ft
Above System Datum: Mean Sea Level
Declination: 10.85 deg
Mag Dip Angle: 65.86 deg
+E/-W **Direction**
ft deg

0.00	0.00	0.00	92.74
------	------	------	-------

Survey: Survey #1

Start Date: 4/16/2008

Company: Weatherford International Ltd.
Tool: MWD;MWD - Standard

Engineer: Tracy R. Williams
Tied-to: From Surface

Survey: Survey #1

MD ft	Incl deg	Azim deg	TVD ft	+N/-S ft	+E/-W ft	VS ft	DLS deg/100ft	Build deg/100ft	Turn deg/100ft	Tool/Comment
0.00	0.00	0.00	0.00	0.00	0.00	0.00	0.00	0.00	0.00	MWD
189.00	0.38	293.98	189.00	0.25	-0.57	-0.58	0.20	0.20	0.00	MWD
320.00	0.40	359.63	320.00	0.89	-0.97	-1.01	0.32	0.02	50.11	MWD
412.00	1.63	347.85	411.98	2.49	-1.25	-1.37	1.35	1.34	-12.80	MWD
504.00	3.31	15.60	503.89	6.33	-0.81	-1.11	2.19	1.83	30.16	MWD
596.00	3.56	10.10	595.73	11.70	0.40	-0.16	0.45	0.27	-5.98	MWD
687.00	4.56	4.73	686.50	18.08	1.20	0.33	1.17	1.10	-5.90	MWD
779.00	5.56	0.48	778.14	26.19	1.54	0.28	1.16	1.09	-4.62	MWD
841.00	5.97	354.44	839.83	32.40	1.25	-0.30	1.18	0.66	-9.74	MWD
902.00	6.38	339.73	900.48	38.73	-0.23	-2.09	2.67	0.67	-24.11	MWD
965.00	7.56	335.73	963.01	45.80	-3.15	-5.34	2.02	1.87	-6.35	MWD
1028.00	8.46	335.81	1025.40	53.80	-6.75	-9.32	1.43	1.43	0.13	MWD
1092.00	6.81	341.60	1088.83	61.70	-9.88	-12.82	2.84	-2.58	9.05	MWD
1156.00	6.06	354.10	1152.43	68.66	-11.42	-14.70	2.48	-1.17	19.53	MWD
1219.00	5.25	354.60	1215.12	74.84	-12.04	-15.60	1.29	-1.29	0.79	MWD
1283.00	4.50	350.48	1278.89	80.23	-12.73	-16.55	1.29	-1.17	-6.44	MWD
1346.00	3.13	325.35	1341.75	84.08	-14.11	-18.12	3.38	-2.17	-39.89	MWD
1410.00	3.69	292.98	1405.64	86.32	-17.00	-21.12	3.09	0.87	-50.58	MWD
1473.00	4.94	276.48	1468.47	87.42	-21.57	-25.72	2.78	1.98	-26.19	MWD
1537.00	6.88	264.35	1532.12	87.35	-28.12	-32.27	3.59	3.03	-18.95	MWD
1632.00	8.88	259.60	1626.22	85.47	-40.99	-45.04	2.21	2.11	-5.00	MWD
1695.00	5.50	249.73	1688.72	83.54	-48.61	-52.55	5.69	-5.37	-15.67	MWD
1778.00	2.94	233.35	1771.49	80.90	-54.05	-57.86	3.38	-3.08	-19.73	MWD
1839.00	2.25	219.98	1832.43	79.04	-56.08	-59.80	1.50	-1.13	-21.92	MWD

Company: BERRY PETROLEUM COMPANY
Field: GARFIELD COUNTY (NAD 83)
Site: GRANLEE B10 PAD
Well: OM01DR B10 696
Wellpath: 1

Date: 4/24/2008 **Time:** 08:19:26 **Page:** 2
Co-ordinate(NE) Reference: Well: OM01DR B10 696, True North
Vertical (TVD) Reference: SITE 8275.9
Section (VS) Reference: Well (0.00N,0.00E,92.74Azi)
Survey Calculation Method: Minimum Curvature **Db:** Sybase

Survey: Survey #1

MD ft	Incl deg	Azim deg	TVD ft	+N/-S ft	+E/-W ft	VS ft	DLS deg/100ft	Build deg/100ft	Turn deg/100ft	Tool/Comment
1905.00	1.50	201.10	1898.39	77.25	-57.22	-60.85	1.46	-1.14	-28.61	MWD
1975.00	1.38	155.98	1968.37	75.62	-57.21	-60.76	1.59	-0.17	-64.46	MWD
2035.00	2.14	129.63	2028.35	74.25	-56.05	-59.54	1.82	1.27	-43.92	MWD
2102.00	2.56	123.35	2095.29	72.63	-53.84	-57.25	0.73	0.63	-9.37	MWD
2140.00	4.06	120.85	2133.23	71.47	-51.97	-55.33	3.96	3.95	-6.58	MWD
2203.00	5.38	104.10	2196.01	69.61	-47.19	-50.47	3.01	2.10	-26.59	MWD
2267.00	7.06	97.73	2259.64	68.35	-40.39	-43.61	2.83	2.62	-9.95	MWD
2330.00	8.81	92.23	2322.03	67.64	-31.73	-34.93	3.02	2.78	-8.73	MWD
2394.00	11.19	90.10	2385.05	67.44	-20.62	-23.82	3.76	3.72	-3.33	MWD
2457.00	12.56	88.10	2446.71	67.65	-7.66	-10.89	2.27	2.17	-3.17	MWD
2521.00	12.50	92.35	2509.18	67.60	6.22	2.98	1.44	-0.09	6.64	MWD
2584.00	12.63	93.10	2570.67	66.95	19.91	16.68	0.33	0.21	1.19	MWD
2648.00	12.88	94.23	2633.09	66.04	34.01	30.81	0.55	0.39	1.77	MWD
2775.00	13.31	99.73	2756.80	62.53	62.53	59.47	1.04	0.34	4.33	MWD
2839.00	13.56	102.98	2819.05	59.60	77.11	74.17	1.24	0.39	5.08	MWD
2902.00	13.63	104.60	2880.28	56.07	91.49	88.70	0.61	0.11	2.57	MWD
2966.00	14.19	107.60	2942.40	51.79	106.26	103.66	1.43	0.87	4.69	MWD
3000.00	14.72	108.37	2975.33	49.17	114.33	111.85	1.66	1.56	2.28	9 5/8"
3025.00	15.11	108.91	2999.49	47.12	120.43	118.04	1.66	1.56	2.14	MWD
3120.00	15.63	106.23	3091.09	39.53	144.43	142.37	0.93	0.55	-2.82	MWD
3216.00	16.25	96.48	3183.41	34.39	170.20	168.36	2.86	0.65	-10.16	MWD
3311.00	14.81	96.85	3274.94	31.45	195.46	193.73	1.52	-1.52	0.39	MWD
3406.00	16.44	87.85	3366.44	30.50	220.96	219.24	3.07	1.72	-9.47	MWD
3502.00	17.81	85.35	3458.19	32.20	249.17	247.34	1.62	1.43	-2.60	MWD
3597.00	19.63	87.97	3548.16	33.95	279.60	277.65	2.11	1.92	2.76	MWD
3692.00	21.63	87.35	3637.06	35.32	313.04	310.99	2.12	2.11	-0.65	MWD
3788.00	22.50	91.35	3726.03	35.71	349.08	346.97	1.81	0.91	4.17	MWD
3883.00	23.06	93.60	3813.63	34.11	385.82	383.75	1.09	0.59	2.37	MWD
3978.00	22.19	93.10	3901.31	31.97	422.30	420.29	0.94	-0.92	-0.53	MWD
4073.00	22.88	93.98	3989.06	29.72	458.64	456.69	0.81	0.73	0.93	MWD
4169.00	21.13	92.60	4078.06	27.64	494.55	492.66	1.90	-1.82	-1.44	MWD
4264.00	21.75	90.85	4166.49	26.60	529.25	527.37	0.94	0.65	-1.84	MWD
4359.00	21.88	89.73	4254.69	26.42	564.55	562.64	0.46	0.14	-1.18	MWD
4454.00	22.67	90.06	4342.60	26.49	600.56	598.61	0.84	0.83	0.35	MWD
4541.79	21.32	91.46	4424.00	26.06	633.44	631.46	1.65	-1.54	1.60	WASATCH
4550.00	21.19	91.60	4431.65	25.98	636.41	634.44	1.65	-1.53	1.70	MWD
4645.00	20.56	89.73	4520.41	25.58	670.26	668.26	0.97	-0.66	-1.97	MWD
4740.00	22.44	89.23	4608.80	25.90	705.07	703.02	1.99	1.98	-0.53	MWD
4835.00	21.88	91.48	4696.78	25.69	740.90	738.82	1.07	-0.59	2.37	MWD
4930.00	20.75	88.23	4785.29	25.75	775.41	773.29	1.72	-1.19	-3.42	MWD
5026.00	19.81	88.22	4875.34	26.78	808.67	806.46	0.98	-0.98	-0.01	MWD
5121.00	18.75	84.98	4965.01	28.62	839.97	837.64	1.58	-1.12	-3.41	MWD
5216.00	17.69	84.23	5055.24	31.41	869.55	867.05	1.14	-1.12	-0.79	MWD
5312.00	17.94	88.23	5146.64	33.33	898.84	896.21	1.30	0.26	4.17	MWD
5407.00	18.06	93.98	5237.00	32.76	928.15	925.52	1.87	0.13	6.05	MWD
5502.00	15.69	98.60	5327.91	29.82	955.55	953.03	2.86	-2.49	4.86	MWD
5598.00	13.69	102.85	5420.77	25.35	979.46	977.13	2.37	-2.08	4.43	MWD
5611.61	13.52	103.56	5434.00	24.62	982.58	980.28	1.75	-1.24	5.25	FORT UNION
5693.00	12.56	108.22	5513.29	19.62	1000.24	998.15	1.75	-1.18	5.72	MWD
5788.00	12.06	109.60	5606.11	13.06	1019.40	1017.60	0.61	-0.53	1.45	MWD
5883.00	10.88	108.23	5699.21	6.93	1037.26	1035.74	1.27	-1.24	-1.44	MWD
5979.00	7.19	112.35	5794.00	1.80	1051.43	1050.14	3.90	-3.84	4.29	MWD
6074.00	6.00	115.97	5888.37	-2.63	1061.39	1060.30	1.33	-1.25	3.81	MWD

Company: BERRY PETROLEUM COMPANY
Field: GARFIELD COUNTY (NAD 83)
Site: GRANLEE B10 PAD
Well: OM01DR B10 696
Wellpath: 1

Date: 4/24/2008 Time: 08:19:26 Page: 3
Co-ordinate(N/E) Reference: Well: OM01DR B10 696, True North
Vertical (TVD) Reference: SITE 8275.9
Section (VS) Reference: Well (0.00N,0.00E,92.74Azi)
Survey Calculation Method: Minimum Curvature Db: Sybase

Survey: Survey #1

MD ft	Incl deg	Azim deg	TVD ft	+N/-S ft	+E/-W ft	VS ft	DLS deg/100ft	Build deg/100ft	Turn deg/100ft	Tool/Comment
6169.00	3.94	116.23	5983.01	-6.25	1068.78	1067.86	2.17	-2.17	0.27	MWD
6265.00	1.88	133.60	6078.88	-8.79	1072.88	1072.08	2.31	-2.15	18.09	MWD
6360.00	1.00	218.35	6173.86	-10.52	1073.50	1072.77	2.15	-0.93	89.21	MWD
6455.00	1.25	153.23	6268.84	-12.09	1073.45	1072.80	1.29	0.26	-68.55	MWD
6550.00	0.38	67.35	6363.83	-12.90	1074.21	1073.59	1.35	-0.92	-90.40	MWD
6645.00	0.50	35.35	6458.83	-12.44	1074.74	1074.10	0.28	0.13	-33.68	MWD
6741.00	0.44	115.85	6554.83	-12.26	1075.31	1074.67	0.63	-0.06	83.85	MWD
6836.00	0.56	311.23	6649.83	-12.11	1075.29	1074.64	1.04	0.13	-173.28	MWD
6931.00	0.25	77.98	6744.83	-11.76	1075.15	1074.48	0.78	-0.33	133.42	MWD
7027.00	1.06	296.48	6840.82	-11.32	1074.56	1073.87	1.32	0.84	-147.40	MWD
7122.00	1.25	291.10	6935.80	-10.55	1072.80	1072.08	0.23	0.20	-5.66	MWD
7217.00	1.38	266.85	7030.78	-10.24	1070.69	1069.96	0.60	0.14	-25.53	MWD
7313.00	1.63	263.48	7126.75	-10.46	1068.18	1067.46	0.28	0.26	-3.51	MWD
7330.26	1.59	259.43	7144.00	-10.53	1067.70	1066.98	0.70	-0.25	-23.44	OHIO CREEK
7408.00	1.50	239.23	7221.71	-11.25	1065.77	1065.09	0.70	-0.11	-25.99	MWD
7503.00	0.75	250.48	7316.69	-12.10	1064.12	1063.48	0.82	-0.79	11.84	MWD
7599.00	1.50	242.85	7412.67	-12.88	1062.41	1061.81	0.79	0.78	-7.95	MWD
7694.00	1.56	238.60	7507.64	-14.12	1060.20	1059.66	0.14	0.06	-4.47	MWD
7740.38	1.52	232.50	7554.00	-14.82	1059.17	1058.67	0.36	-0.08	-13.15	APPROX TOP GAS
7789.00	1.50	225.85	7602.61	-15.66	1058.20	1057.74	0.36	-0.04	-13.68	MWD
7790.40	1.51	225.58	7604.00	-15.69	1058.17	1057.71	1.17	1.05	-19.68	MESAVERDE
7885.00	2.56	214.60	7698.54	-18.30	1056.08	1055.75	1.17	1.10	-11.60	MWD
7980.00	2.00	214.98	7793.47	-21.41	1053.93	1053.74	0.59	-0.59	0.40	MWD
8075.00	3.06	216.73	7888.37	-24.80	1051.46	1051.44	1.12	1.12	1.84	MWD
8170.00	3.13	223.73	7983.24	-28.70	1048.15	1048.32	0.40	0.07	7.37	MWD
8266.00	2.69	226.48	8079.11	-32.15	1044.71	1045.05	0.48	-0.46	2.86	MWD
8361.00	2.88	219.35	8174.00	-35.53	1041.58	1042.08	0.42	0.20	-7.51	MWD
8393.00	2.56	217.48	8205.96	-36.72	1040.63	1041.20	1.04	-1.00	-5.84	MWD
8488.00	2.31	213.10	8300.88	-40.00	1038.29	1039.02	0.33	-0.26	-4.61	MWD
8583.00	1.88	228.98	8395.82	-42.63	1036.07	1036.93	0.76	-0.45	16.72	MWD
8679.00	1.69	239.35	8491.77	-44.39	1033.67	1034.61	0.39	-0.20	10.80	MWD
8742.00	1.06	251.98	8554.75	-45.04	1032.31	1033.29	1.10	-1.00	20.05	MWD
8837.00	1.44	208.85	8649.73	-46.36	1030.90	1031.94	1.04	0.40	-45.40	MWD
8933.00	1.69	200.10	8745.69	-48.74	1029.83	1030.99	0.36	0.26	-9.11	MWD
8964.00	1.75	198.85	8776.68	-49.62	1029.52	1030.72	0.23	0.19	-4.03	MWD
9028.00	1.25	203.10	8840.66	-51.19	1028.93	1030.20	0.80	-0.78	6.64	MWD
9060.00	1.06	198.85	8872.65	-51.79	1028.70	1030.00	0.65	-0.59	-13.28	MWD
9091.00	1.25	208.73	8903.65	-52.36	1028.45	1029.77	0.89	0.61	31.87	MWD
9155.00	1.13	209.10	8967.63	-53.52	1027.80	1029.19	0.19	-0.19	0.58	MWD
9218.00	1.13	247.85	9030.62	-54.30	1026.93	1028.35	1.19	0.00	61.51	MWD
9235.00	1.13	259.98	9047.62	-54.39	1026.61	1028.03	1.40	0.00	71.35	MWD
9314.00	1.38	241.60	9126.60	-54.98	1025.00	1026.46	0.60	0.32	-23.27	MWD
9345.00	1.63	250.98	9157.59	-55.30	1024.26	1025.73	1.13	0.81	30.26	MWD
9409.00	1.69	262.85	9221.56	-55.71	1022.46	1023.95	0.54	0.09	18.55	MWD
9504.00	2.06	252.23	9316.51	-56.41	1019.44	1020.98	0.53	0.39	-11.18	MWD
9536.00	1.25	265.48	9348.50	-56.61	1018.55	1020.09	2.78	-2.53	41.41	MWD
9599.00	2.31	252.10	9411.47	-57.06	1016.65	1018.22	1.80	1.68	-21.24	MWD
9631.00	1.63	252.85	9443.45	-57.39	1015.61	1017.19	2.13	-2.12	2.34	MWD
9695.00	2.50	243.22	9507.40	-58.29	1013.49	1015.12	1.46	1.36	-15.05	MWD
9727.00	2.56	244.23	9539.37	-58.91	1012.22	1013.88	0.23	0.19	3.16	MWD
9790.00	2.19	247.60	9602.32	-59.98	1009.84	1011.56	0.63	-0.59	5.35	MWD
9822.00	2.13	249.48	9634.30	-60.42	1008.72	1010.46	0.29	-0.19	5.87	MWD
9885.00	2.00	262.48	9697.26	-60.98	1006.54	1008.30	0.77	-0.21	20.63	MWD

Company: BERRY PETROLEUM COMPANY Field: GARFIELD COUNTY (NAD 83) Site: GRANLEE B10 PAD Well: OM01DR B10 696 Wellpath: 1	Date: 4/24/2008 Time: 08:19:26 Page: 4 Co-ordinate(NE) Reference: Well: OM01DR B10 696, True North Vertical (TVD) Reference: SITE 8275.9 Section (VS) Reference: Well (0.00N,0.00E,92.74Azi) Survey Calculation Method: Minimum Curvature Db: Sybase
--	--

Survey: Survey #1

MD ft	Incl deg	Azim deg	TVD ft	+N/-S ft	+E/-W ft	VS ft	DLS deg/100ft	Build deg/100ft	Turn deg/100ft	Tool/Comment
9917.00	1.94	266.98	9729.24	-61.08	1005.44	1007.21	0.52	-0.19	14.06	MWD
9981.00	2.19	264.60	9793.20	-61.25	1003.14	1004.92	0.41	0.39	-3.72	MWD
10076.00	2.38	257.85	9888.12	-61.84	999.41	1001.22	0.35	0.20	-7.11	MWD
10171.00	2.44	255.35	9983.04	-62.76	995.52	997.38	0.13	0.06	-2.63	MWD
10217.01	2.59	252.14	10029.00	-63.33	993.59	995.48	0.44	0.32	-6.98	CAMEO
10266.00	2.75	249.10	10077.94	-64.09	991.44	993.37	0.44	0.33	-6.20	MWD
10361.00	3.19	242.73	10172.81	-66.11	986.96	988.99	0.58	0.46	-6.71	MWD
10552.00	4.38	240.98	10363.39	-72.09	975.86	978.19	0.63	0.62	-0.92	MWD
10647.00	5.00	237.35	10458.07	-76.08	969.20	971.73	0.72	0.65	-3.82	MWD
10718.21	5.19	234.67	10529.00	-79.61	963.96	966.67	0.42	0.26	-3.77	ROLLINS SS
10720.00	5.19	234.60	10530.78	-79.71	963.83	966.54	0.42	0.27	-3.63	LAST SVY
10775.00	5.19	234.60	10585.56	-82.59	959.77	962.62	0.00	0.00	0.00	EXT SVY

Targets

Name	Description Dip.	Dir.	TVD ft	+N/-S ft	+E/-W ft	Map Northing ft	Map Easting ft	<---- Latitude ----><--- Longitude --->					
PBHL OM01DR -Rectangle (100x200)			10679.00	-46.00	960.09	1632848.90	2270355.30	39	32	32.697	N	108	5 15.456 W

Casing Points

MD ft	TVD ft	Diameter in	Hole Size in	Name
3000.00	2975.33	9.625	12.250	9 5/8"

Formations

MD ft	TVD ft	Formations	Lithology	Dip Angle deg	Dip Direction deg
4541.79	4424.00	WASATCH		0.00	0.00
5611.61	5434.00	FORT UNION		0.00	0.00
7330.26	7144.00	OHIO CREEK		0.00	0.00
7740.38	7554.00	APPROX TOP GAS		0.00	0.00
7790.40	7604.00	MESAVERDE		0.00	0.00
10217.01	10029.00	CAMEO		0.00	0.00
10718.21	10529.00	ROLLINS SS		0.00	0.00

Annotation

MD ft	TVD ft	
10775.00	10585.56	EXT SVY
10720.00	10530.78	LAST SVY