
OXY GRAND JUNCTION EBUSINESS

CC 697-16-27A

Cement Surface Casing **25-Mar-2010**

Post Job Report

The Road to Excellence Starts with Safety

Sold To #: 344034	Ship To #: 2775349	Quote #:	Sales Order #: 7257805
Customer: OXY GRAND JUNCTION EBUSINESS	Customer Rep: BENEVIDES, SIMON		
Well Name: CC	Well #: 697-16-27A	API/UWI #:	
Field:	City (SAP): PARACHUTE	County/Parish:	State:
Contractor: H&P 330	Rig/Platform Name/Num: H&P 330		
Job Purpose: Cement Surface Casing			
Well Type: Development Well	Job Type: Cement Surface Casing		
Sales Person: DUNNING, DUSTIN	Srv Supervisor: LEIST, JAMES	MBU ID Emp #:	362787

Job Personnel

HES Emp Name	Exp Hrs	Emp #	HES Emp Name	Exp Hrs	Emp #	HES Emp Name	Exp Hrs	Emp #
BLANCHETTE, JAMES George	10	371360	BROWN, TRAVIS A	10	396848	CHASTAIN, DERICK Allan	1	455848
HOEFER, FREEMAN Dennis	10	369666	LEIST, JAMES R	10	362787	ZUMWALT, ORVILLE Raymond	10	398157

Equipment

HES Unit #	Distance-1 way	HES Unit #	Distance-1 way	HES Unit #	Distance-1 way	HES Unit #	Distance-1 way
10296152C	120 mile	10533645	120 mile	10784064	120 mile	10856450	120 mile
10856464	120 mile	10897797	120 mile	11006314	120 mile	11027039	120 mile
11139328	120 mile	11259882	120 mile	11259883	120 mile		

Job Hours

Date	On Location Hours	Operating Hours	Date	On Location Hours	Operating Hours	Date	On Location Hours	Operating Hours
3-24-10	14	8	3-25-10	16	4			

TOTAL Total is the sum of each column separately

Job

Formation Name	Top	Bottom	Called Out	Date	Time	Time Zone
Formation Depth (MD)			On Location	24 - Mar - 2010	10:00	MST
Form Type	BHST		Job Started	24 - Mar - 2010	11:11	MST
Job depth MD	2736. ft	Job Depth TVD	2736. ft	Job Completed	25 - Mar - 2010	16:12
Water Depth		Wk Ht Above Floor	4. ft	Departed Loc	25 - Mar - 2010	18:30
Perforation Depth (MD)	From	To				

Well Data

Description	New / Used	Max pressure psig	Size in	ID in	Weight lbm/ft	Thread	Grade	Top MD ft	Bottom MD ft	Top TVD ft	Bottom TVD ft
-------------	------------	-------------------	---------	-------	---------------	--------	-------	-----------	--------------	------------	---------------

Sales/Rental/3rd Party (HES)

Description	Qty	Qty uom	Depth	Supplier
PLUG,CMTG,TOP,9 5/8,HWE,8.16 MIN/9.06 MA	1	EA		

Tools and Accessories

Type	Size	Qty	Make	Depth	Type	Size	Qty	Make	Depth	Type	Size	Qty	Make
Guide Shoe					Packer					Top Plug			
Float Shoe					Bridge Plug					Bottom Plug			
Float Collar					Retainer					SSR plug set			
Insert Float										Plug Container			
Stage Tool										Centralizers			

Miscellaneous Materials

Gelling Agt	Conc	Surfactant	Conc	Acid Type	Qty	Conc	%
Treatment Fld	Conc	Inhibitor	Conc	Sand Type	Size	Qty	

Fluid Data									
Stage/Plug #: 1									
Fluid #	Stage Type	Fluid Name	Qty	Qty uom	Mixing Density lbm/gal	Yield ft ³ /sk	Mix Fluid Gal/sk	Rate bbl/min	Total Mix Fluid Gal/sk
1	Fresh Water Spacer		10.00	bbl	8.33	.0	.0	5.0	
2	SUPER FLUSH 101	SUPER FLUSH 101 - SBM (12199)	20.00	bbl	10.	.0	.0	5.0	
3	Fresh Water Spacer		10.00	bbl	8.33	.0	.0	5.0	
4	12.3 VERSACEM LEAD	VERSACEM (TM) SYSTEM (452010)	1100.0	sacks	12.3	2.34	12.71	6.0	12.71
0.25 lbm		POLY-E-FLAKE (101216940)							
0.1 %		TUF FIBER 594, 15 LB BOX (101350514)							
12.71 Gal		FRESH WATER							
5	12.8 VERSACEM TAIL	VERSACEM (TM) SYSTEM (452010)	180.0	sacks	12.8	2.08	10.75	6.0	10.75
0.25 lbm		POLY-E-FLAKE (101216940)							
10.75 Gal		FRESH WATER							
6	Water Spacer		209.00	bbl	8.34	.0	.0	8.0	
7	Tail Slurry	HALCEM (TM) SYSTEM (452986)	350.0	sacks	12.5	1.97	10.96		10.96
4 %		ECONOLITE (100001580)							
10.96 Gal		FRESH WATER							
Calculated Values		Pressures		Volumes					
Displacement	209	Shut In: Instant		Lost Returns		Cement Slurry	751	Pad	
Top Of Cement	SURFACE	5 Min		Cement Returns	2	Actual Displacement	209	Treatment	
Frac Gradient		15 Min		Spacers	40	Load and Breakdown		Total Job	
Rates									
Circulating	0	Mixing	5	Displacement	6	Avg. Job	5.5		
Cement Left In Pipe	Amount	46.82 ft	Reason	Shoe Joint					
Frac Ring # 1 @	ID	Frac ring # 2 @	ID	Frac Ring # 3 @	ID	Frac Ring # 4 @	ID		
The Information Stated Herein Is Correct				Customer Representative Signature					

The Road to Excellence Starts with Safety

Sold To #: 344034		Ship To #: 2775349		Quote #:		Sales Order #: 7257805	
Customer: OXY GRAND JUNCTION EBUSINESS				Customer Rep: BENEVIDES, SIMON			
Well Name: CC			Well #: 697-16-27A			API/UWI #:	
Field:		City (SAP): PARACHUTE		County/Parish:		State:	
Legal Description:							
Lat: N 0 deg. OR N 0 deg. 0 min. 0 secs.				Long: E 0 deg. OR E 0 deg. 0 min. 0 secs.			
Contractor: H&P 330			Rig/Platform Name/Num: H&P 330				
Job Purpose: Cement Surface Casing						Ticket Amount:	
Well Type: Development Well			Job Type: Cement Surface Casing				
Sales Person: DUNNING, DUSTIN			Srvc Supervisor: LEIST, JAMES			MBU ID Emp #: 362787	

Activity Description	Date/Time	Cht #	Rate bbl/min	Volume bbl		Pressure psig		Comments
				Stage	Total	Tubing	Casing	
Call Out	03/24/2010 03:00							TP- 2736, TD-2764, S.J.-46.82, MUD# 10, HOLE-14 3/4, PV-16, YP-17, TEMP-90
Arrive At Loc	03/24/2010 09:45							NO CIRULATION BEFORE, DURING OR AFTER THE JOB, RIG PUT 350 BBLS MUD INTO HOLE BEFORE CMT JOB
Assessment Of Location Safety Meeting	03/24/2010 09:55							WITH ALL HES PERSONNEL
Pre-Rig Up Safety Meeting	03/24/2010 10:00							WITH ALL HES PERSONNEL
Rig-Up Completed	03/24/2010 10:50							
Pre-Job Safety Meeting	03/24/2010 11:00							WITH ALL ON LOCATION PERSONNEL
Start Job	03/24/2010 11:11							NO PIPE MOVEMENT DURING JOB
Pressure Test	03/24/2010 11:13							3420 PSI
Pump Spacer 1	03/24/2010 11:17		4	10			250.0	FRESH WATER
Pump Spacer 1	03/24/2010 11:21		4	20			250.0	SUPER FLUSH 101, DALBO TRUCK ARRIVED @ 1000 AND LEFT @ 1300
Pump Spacer 1	03/24/2010 11:26		4	10			306.0	H2O SPACER

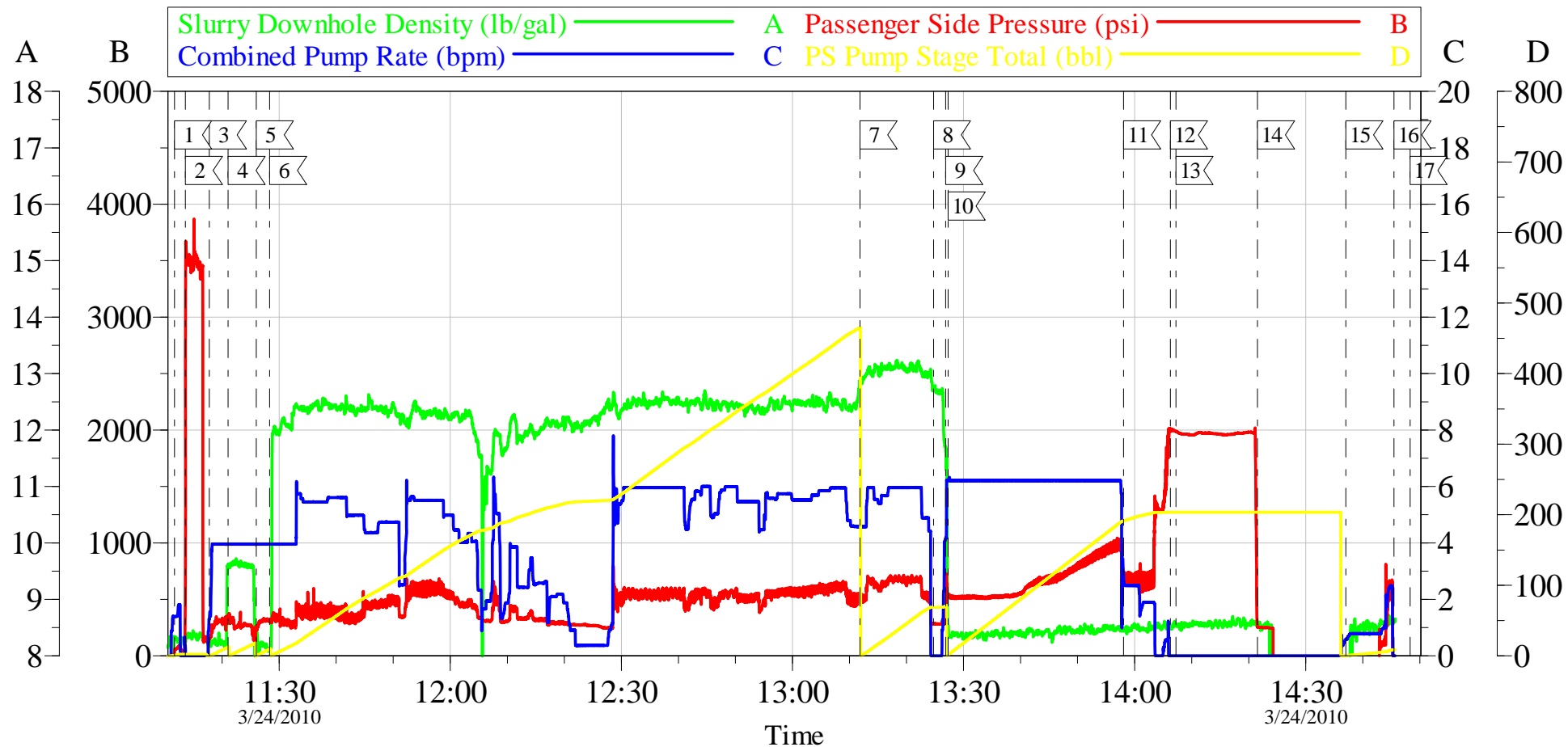
Activity Description	Date/Time	Cht #	Rate bbl/min	Volume bbl		Pressure psig		Comments
				Stage	Total	Tubing	Casing	
Pump Lead Cement	03/24/2010 11:28		5	456			570.0	DURING LEAD CMT THERE WAS A PROBLEM WITH GETTING CMT AT A CONSTANT RATE OPERATOR MADE ADJUSTMENTS. WE HAD TO SLOW RATE ON PUMP AND REPLACE CMT HEAD THROAT AND MAKE ADJUSTMENTS WITH RECIRCULATION PSI THE REST OF THE JOB WENT AS PLANNED
Comment	03/24/2010 11:28							1100 SKS, 12.3 PPG, 2.33 FT3/SK, 12.62 GAL/SK
Pump Tail Cement	03/24/2010 13:11		5	66			522.0	180 SKS, 12.8 PPG, 2.07 FT3/SK, 10.67 GAL/SK
Shutdown	03/24/2010 13:24							
Drop Top Plug	03/24/2010 13:26							AWAY
Pump Displacement	03/24/2010 13:27		6	209			809.0	FRESH WATER
Slow Rate	03/24/2010 13:58		2	192			691.0	TO BUMP PLUG
Bump Plug	03/24/2010 14:07		2	204			809.0	PLUG BUMPED, TESTED CASING FOR 30 MIN. @ 1500 PSI
Check Floats	03/24/2010 14:21						1500.0	THE FLOATS ARE HOLDING
Pump Displacement	03/24/2010 14:37							PUMPED 10 BBLS SUGAR WATER DOWN PARASITE STRING
Shutdown	03/24/2010 14:45							WASHED UP AND RIG UP FOR THE TOP OUT JOB
Pre-Convoy Safety Meeting	03/24/2010 17:00							WITH ALL HES PERSONNEL
Crew Leave Yard	03/24/2010 17:00							
End Job	03/24/2010 17:59							

Activity Description	Date/Time	Cht #	Rate bbl/ min	Volume bbl		Pressure psig		Comments
				Stage	Total	Tubing	Casing	
Pump Cement	03/24/2010 18:00		2	43			115.0	122 SKS, 12.5 PPG, 1.97 FT3/SK, 10.96 GAL/SK PUMP TOP OUT CMT RAN 40 FT. OF OUR 1 INCH TUBING DOWN ANNULAS, NO CEMENT RETURNS
Pump Displacement	03/24/2010 18:50		2	2			95.0	DISPLACED TUBING AND IRON WITH FRESH WATER
Shutdown	03/24/2010 19:11							SET UP FOR NEXT TOP OUT
Pump Spacer 1	03/24/2010 20:38		2	2			93.0	FRESH WATER TO MAKE SURE TUBING IS CLEAR
Pump Cement	03/24/2010 20:39		2	44			119.0	125 SKS, 12.5 PPG, 1.97 FT3/SK, 10.96 GAL/SK NO CEMENT RETURNS
Shutdown	03/24/2010 21:01							
Pump Spacer 1	03/24/2010 22:10		2	2			87.0	CAL. CHLORIDE WATER AHEAD
Pump Cement	03/24/2010 22:11		2	43			112.0	122 SKS, 12.5 PPG, 1.97 FT3/SK, 10.96 GAL/SK NO CEMENT RETURNS
Shutdown	03/24/2010 22:33							
Pump Spacer 1	03/25/2010 00:50		2	2			78.0	CAL. CHLORIDE WATER AHEAD
Pump Cement	03/25/2010 00:51		2	50			123.0	142 SKS, 12.5 PPG, 1.97 FT3/SK, 10.96 GAL/SK NO CEMENT RETURNS
Shutdown	03/25/2010 01:16							
Pump Cement	03/25/2010 13:39		2	35			126.0	175 SKS, 15.8 PPG, 1.15 FT3/SK, 5.0 GAL/SK MIX 2 % CAL. CHLORIDE ON FLY MT. G "NEAT" CEMENT NO CEMENT RETURNS
Shutdown	03/25/2010 13:58							

Activity Description	Date/Time	Cht #	Rate bbl/ min	Volume bbl		Pressure psig		Comments
				Stage	Total	Tubing	Casing	
Pump Cement	03/25/2010 15:10		2	14			115.0	68 SKS, 15.8 PPG, 1.15 FT3/SK, 5.0 GAL/SK MIX 2 % CAL. CHLORIDE ON FLY, MT. G "NEAT" CEMENT CEMENT TO SURFACE
Shutdown	03/25/2010 15:13							
Pre-Rig Down Safety Meeting	03/25/2010 16:12							WITH ALL HES PERSONNEL
Rig-Down Completed	03/25/2010 18:00							
Pre-Convoy Safety Meeting	03/25/2010 18:25							WITH ALL HES PERSONNEL
Crew Leave Location	03/25/2010 18:30							
Comment	03/25/2010 18:30							THANKYOU FOR USING HALLIBURTON CEMENT, JAMES LEIST AND CREW

OXY

9 5/8 SURFACE CASING



Local Event Log

1 START JOB	11:11:39	2 PRESSURE TEST	11:13:32	3 PUMP H2O SPACER	11:17:46
4 PUMP SUPERFLUSH SPACER	11:21:03	5 PUMP H2O SPACER	11:26:00	6 PUMP LEAD CMT	11:28:20
7 PUMP TAIL CMT	13:11:50	8 SHUTDOWN	13:24:44	9 DROP TOP PLUG	13:26:52
10 PUMP DISPLACEMENT	13:27:19	11 SLOW RATE	13:58:04	12 CASING TEST	14:06:16
13 BUMP PLUG	14:07:14	14 CHECK FLOATS	14:21:33	15 PUMP PARASITE	14:37:02
16 SHUTDOWN	14:45:29	17 END JOB	14:48:17		

Customer: OXY
Well Description: CC 697-16-27A

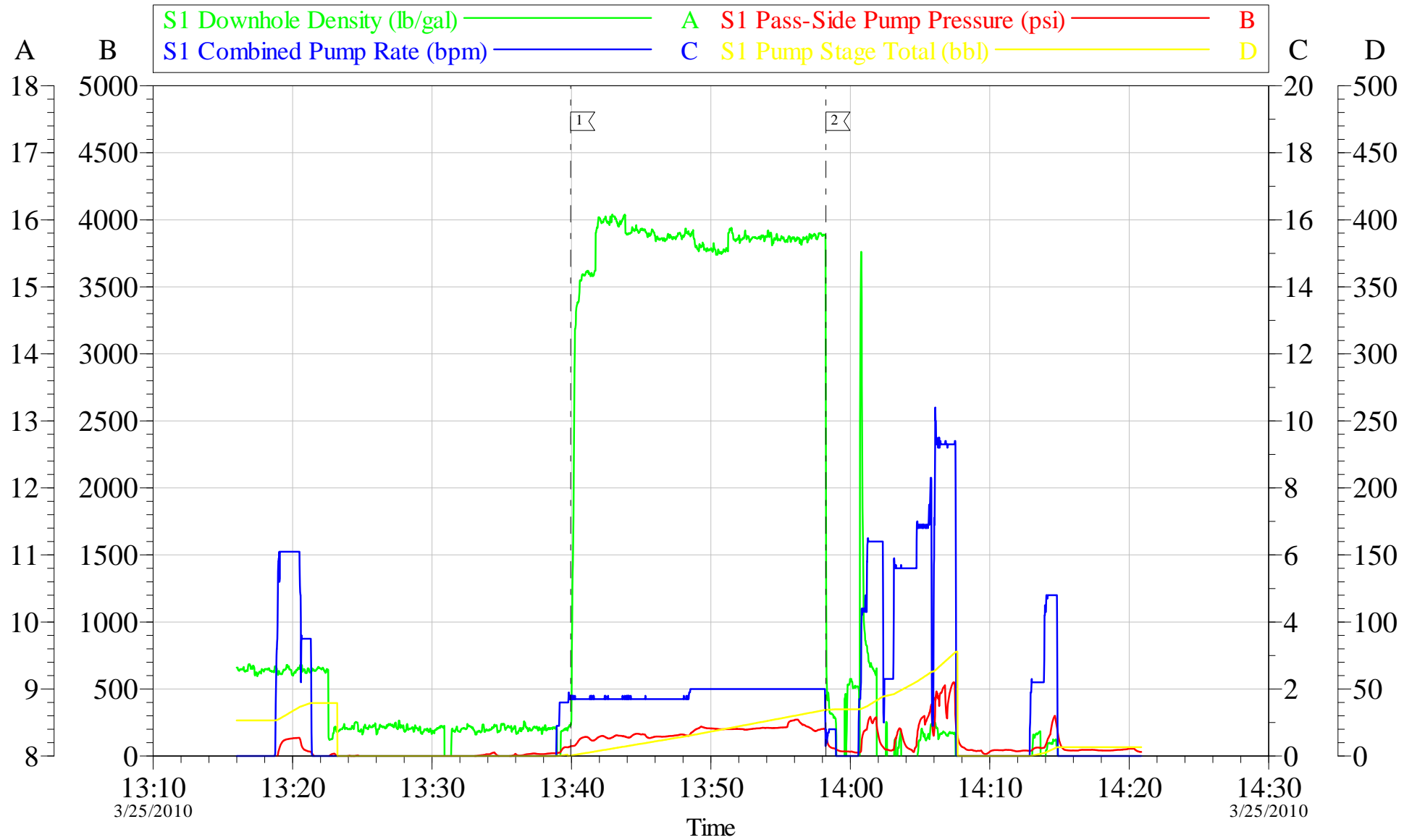
Job Date: 24-Mar-2010
JOB TYPE: SURFACE

Sales Order #: 7257805
ADC USED: YES

OptiCem v6.3.4
24-Mar-10 16:33

OXY

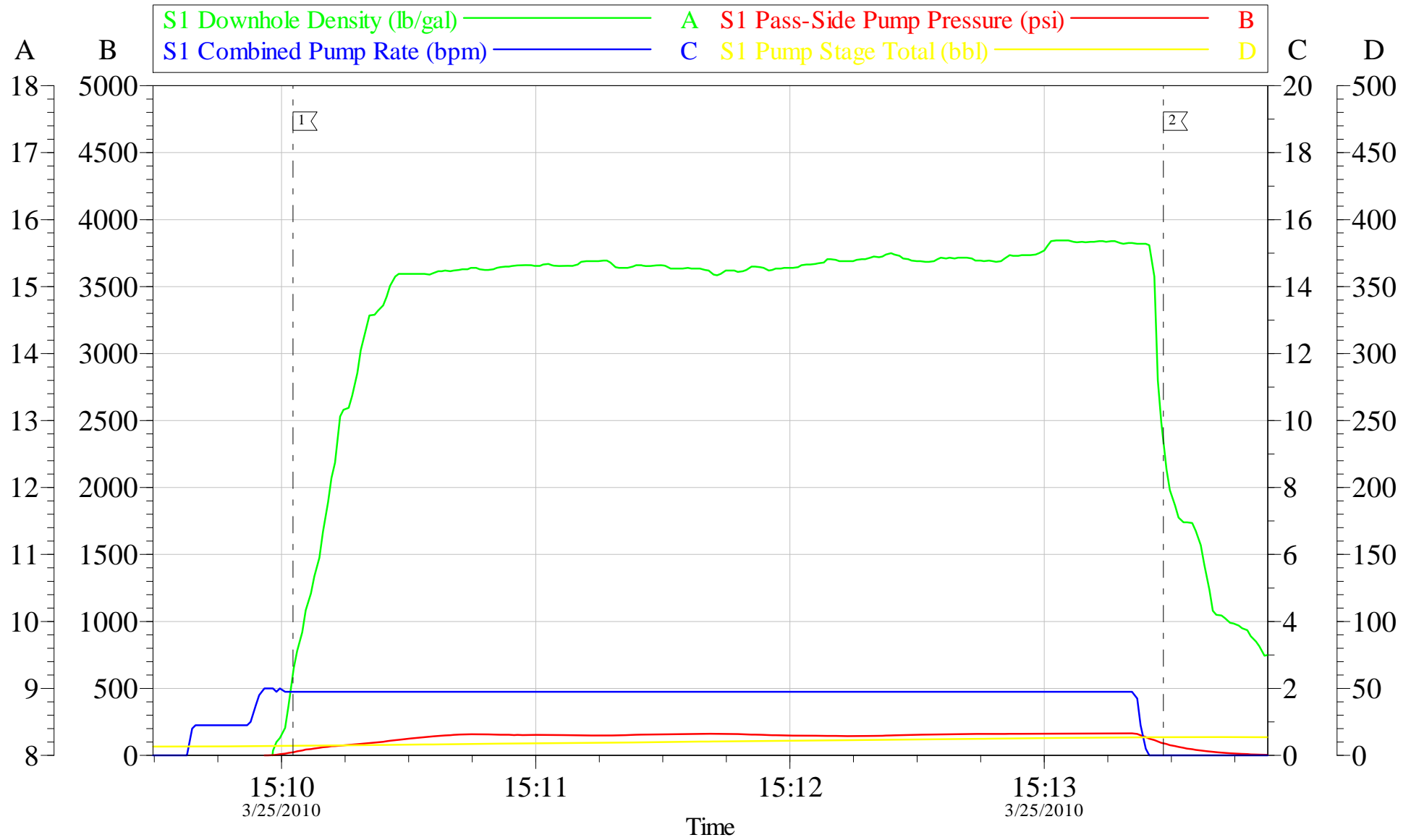
9 5/8 SURFACE TOP OUT 5



Customer: OXY	Job Date: 25-Mar-2010	Sales Order #: 7257805
Well Description: CC 697-16-27A	Job Type: TOP OUT	ADC Used: YES
Company Rep: OB SANCHEZ	Cement Supervisor: JAMES LEIST	Elite #:9

OXY

9 5/8 SURFACE TOP OUT 6



Local Event Log			
1	PUMP CEMENT	15:10:03	2 SHUTDOWN 15:13:28

Customer: OXY	Job Date: 25-Mar-2010	Sales Order #: 7257805
Well Description: CC 697-16-27A	Job Type: TOP OUT	ADC Used: YES
Company Rep: OB SANCHEZ	Cement Supervisor: JAMES LEIST	Elite #:9 DEREK CHASTAIN