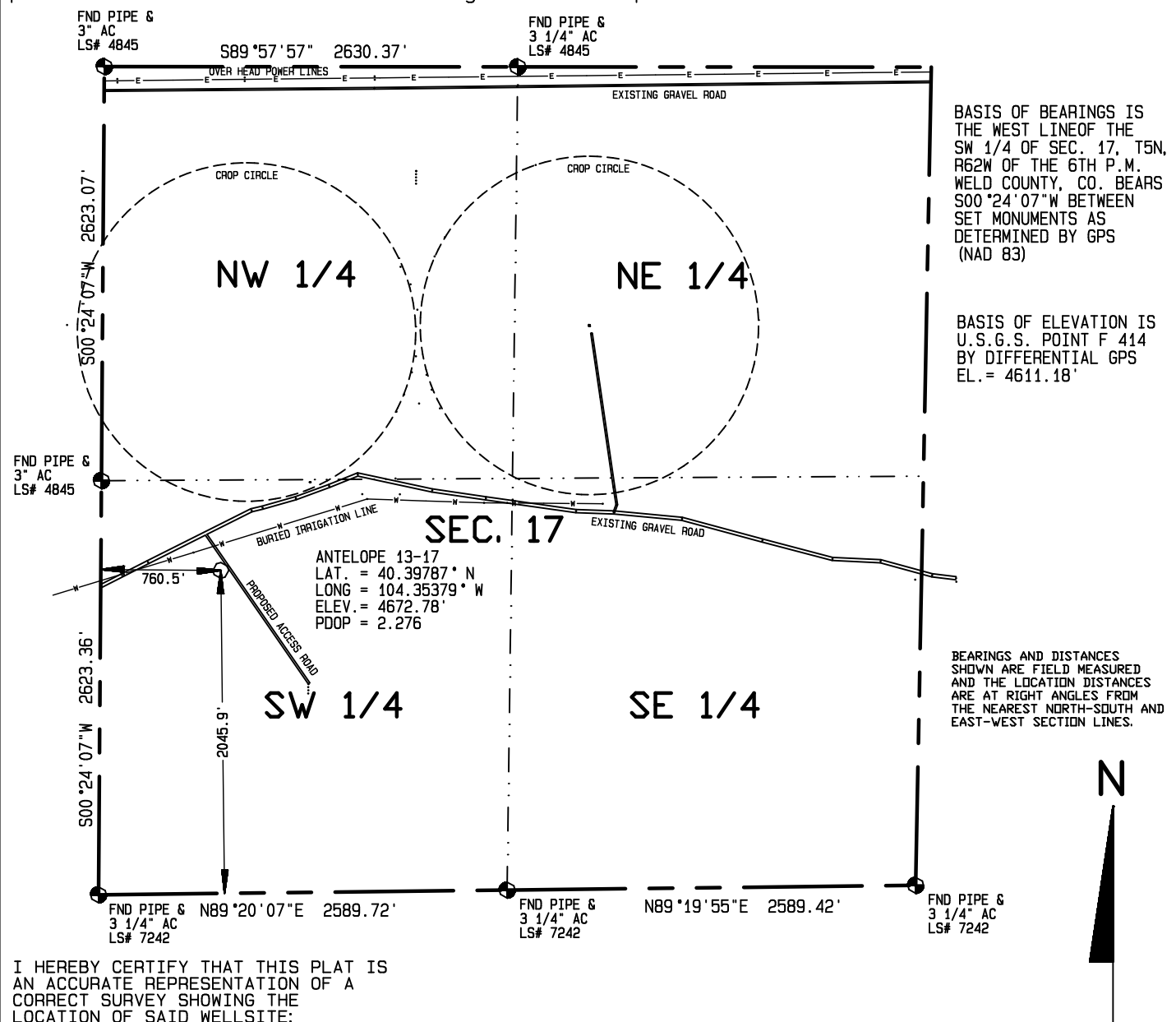
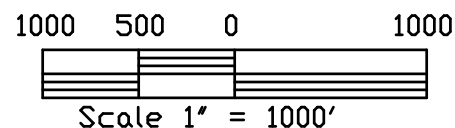


Contract Surveyors, Ltd. of Denver, Colorado has in accordance with a request from Steven Wolfe for Bonanza Creek Energy Operating Company, LLC, determined the location of ANTELOPE 13-17 to be 2045.9' FSL & 760.5' FWL Section 17, Township 5 North, Range 62 West of the 6th Principal Meridian, Weld County, State of Colorado. The surface elevation at this point is 4672.8 feet above m.s.l. Improvements within 400 feet of the location include: A buried irrigation line passes 160' north and a 2 track gravel road passes 244' northwest



I HEREBY CERTIFY THAT THIS PLAT IS AN ACCURATE REPRESENTATION OF A CORRECT SURVEY SHOWING THE LOCATION OF SAID WELLSITE:



Dan Griggs PLS# 38018

**CONTRACT SURVEYORS, LTD.**  
 COMPLETE SURVEYING AND GLOBAL POSITIONING

2133 SOUTH BELLAIRE STREET #14  
 DENVER COLORADO 80222  
 (303) 756-3695



DATE OF FIELD WORK: 21 JULY, 2010	DATE OF DRAWING: 4 AUGUST, 2010
ANTELOPE 13-17	
NW 1/4, SW 1/4 SEC. 17, T5N, R62W	
BONANAZA CREEK ENERGY OPERATING COMPANY, LLC	
WELD COUNTY, COLORADO	

CSL# 10104-38