

Sanjel (USA) Inc.

200, 505 - 2nd Street SW

Calgary, Alberta, T2P 1N8

Telephone: (403) 269-1420

Sanjel 
A Specialized Energy Service Company

A Specialized Energy Service Company

SERVICE TICKET

9154252

This service ticket is not an invoice; pricing

is subject to review and change without notice.

[illegible]

Sanjel

Client Name	Well Name	Job Date
Augustus Energy Partners	White 44_03	July 26, 2010
Client Representative	Well Location	Job Type
Justin Stone	Sec 3 T1S R46W	Surface

Description	Size (in)	Weight (lb/ft)	Grade	Max. Pres. (psi)	True measured depth		Capacity (bbls)	Casing Attachments and Tools	TMD (ft)
					Start (ft)	End (ft)			
Drill Pipe/Tubing	-	-	-	-	-	-	-	Guide/Float Shoe	20
Open Hole	9.88	-	-	-	kb	332.00	-	Float Collar	309.89
Casing	7.00	20.00	-	-	Kb	329.89	-	MSCC	
	-	-	-	-	-	-	-	ECP	
	-	-	-	-	-	-	-	Liner Hanger	
	-	-	-	-	-	-	-		
	-	-	-	-	-	-	-	Cementing Plug	

[illegible]

Treatment Report							
Event	Time	Pressure (psi)		Rate bbbls/min	Stage Volume (bbbls)	Total Volume (bbbls)	Remarks
		Tubular	Annular				
1	0:00	-	-	-	-	-	Arrive on Location - Time Requested : 14:30
2	0:00	-	-	-	-	-	Safety Meeting Held 15:10
3	15:23	-	-	-	-	-	Pressure Test Surface Treating Lines
4	15:25	50.0	-	3.0	1.0	1.0	Fresh H2O Ahead
5	15:26	100.0	-	2.5	22.0	23.0	Lead Cement
6	15:34	100.0	-	2.5	9.5	32.5	Tail cement
7	0:00	-	-	-	-	-	Drop Plug
8	15:37	100.0	-	1.0	12.5	45.0	Displace Plug
9	0:00	-	-	0.0	-	-	Bump Plug 500 PSI Over
Fluid Returns						Vol : (bbbls) BBLS Returns 6bbbls	

Employee	Unit #	Arrive	Depart	Travel Bonus	Bin #
Ty Pratt	200525	7/26/10 15:00	7/26/10 16:30		Bin # -
Jarrold Gerbitz	740017	"	"		Bin # -
Granite Mcmartin	746075	"	"		MTS# 258119
Ron Carwin	746089	"	"		MTS# -
-	-	"	"		MTS# -

Sanjel★

Client Name	Well Name	Job Date
Augustus Energy Partners	White 44_03	July 26, 2010
Client Representative	Well Location	Job Type
Justin Stone	Sec 3 T1S R46W	Surface

Description	Size (in)	Weight (lb/ft)	Grade	Max. Pres. (psi)	True measured depth		Capacity (bbls)	Casing Attachments and Tools	TMD (ft)
					Start (ft)	End (ft)			
Drill Pipe/Tubing	-	-	-	-	-	-	-	Guide/Float Shoe	20
Open Hole	9.88	-	-	-	kb	332.00	-	Float Collar	309.89
Casing	7.00	20.00	-	-	Kb	329.89	-	MSCC	
	-	-	-	-	-	-	-	ECP	
	-	-	-	-	-	-	-	Liner Hanger	
	-	-	-	-	-	-	-		
	-	-	-	-	-	-	-	Cementing Plug	

[illegible]

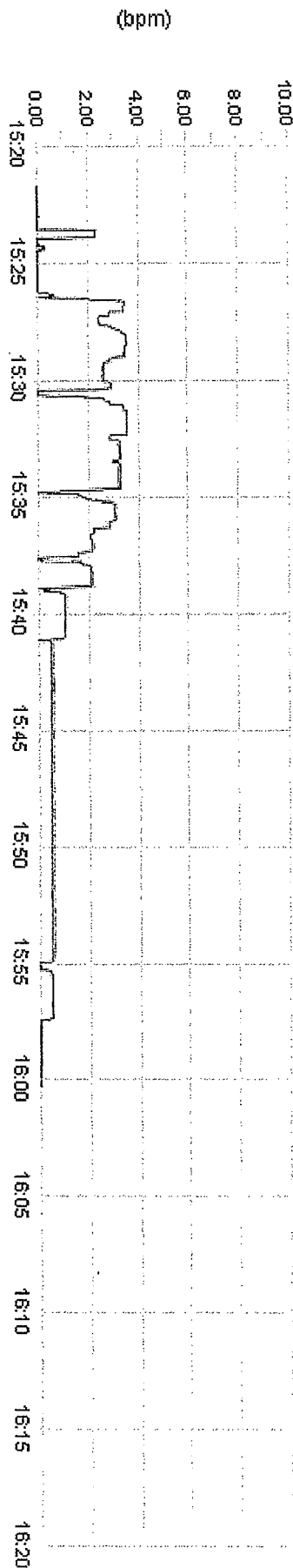
Event	Time	Pressure (psi)		Rate bbbls/min	Stage Volume (bbbls)	Total Volume (bbbls)	Remarks	
		Tubular	Annular					
1	0:00	-	-	-	-	-	Arrive on Location - Time Requested :	14:30
2	0:00	-	-	-	-	-	Safety Meeting Held	15:10
3	15:23	-	-	-	-	-	Pressure Test Surface Treating Lines	
4	15:25	50.0	-	3.0	1.0	1.0	Fresh H2O Ahead	
5	15:26	100.0	-	2.5	22.0	23.0	Lead Cement	
6	15:34	100.0	-	2.5	9.5	32.5	Tail cement	
7	0:00	-	-	-	-	-	Drop Plug	
8	15:37	100.0	-	1.0	12.5	45.0	Displace Plug	
9	0:00	-	-	0.0	-	-	Bump Plug 500 PSI Over	
Fluid Returns							Vol : (bbbls) BBLs Returns 6bbbls	

Employee	Unit #	Arrive	Depart	Travel Bonus	Bin #	-
Ty Pratt	200525	7/26/10 15:00	7/26/10 16:30		Bin #	-
Jarrold Gerbitz	740017	"	"		Bin #	-
Granite Mcmartin	746075	"	"		MTS#	258119
Ron Carwin	746089	"	"		MTS#	-
-	-	"	"		MTS#	-

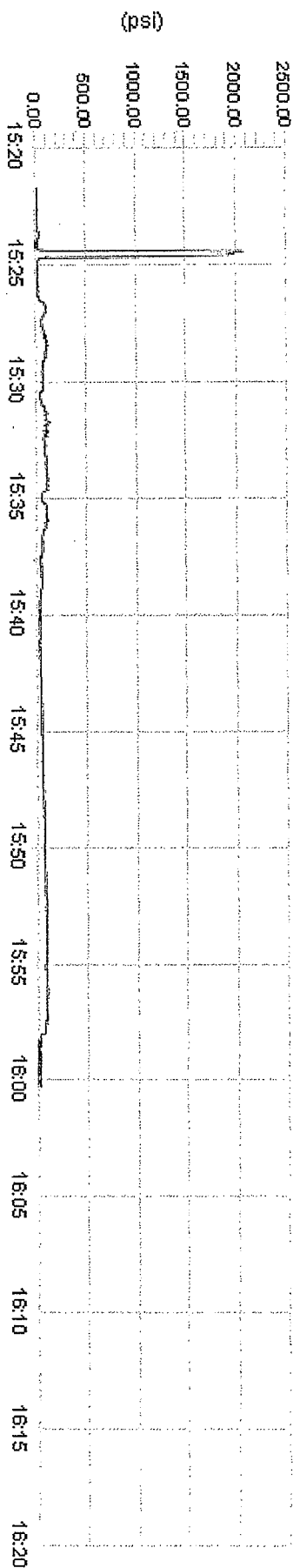


Client	Augustus Energy	Client Rep	Justin Stone	Supervisor	Ty Pratt
Ticket No.	9154252	Well Name	White 44-03	Unit No.	740017
Location	Sec 3 T1S R46W	Job Type	Surface Casing	Service District	51 Wray
Comments	Pumped H2O Cement, Fresh H2O				Job Date
					07/26/2010

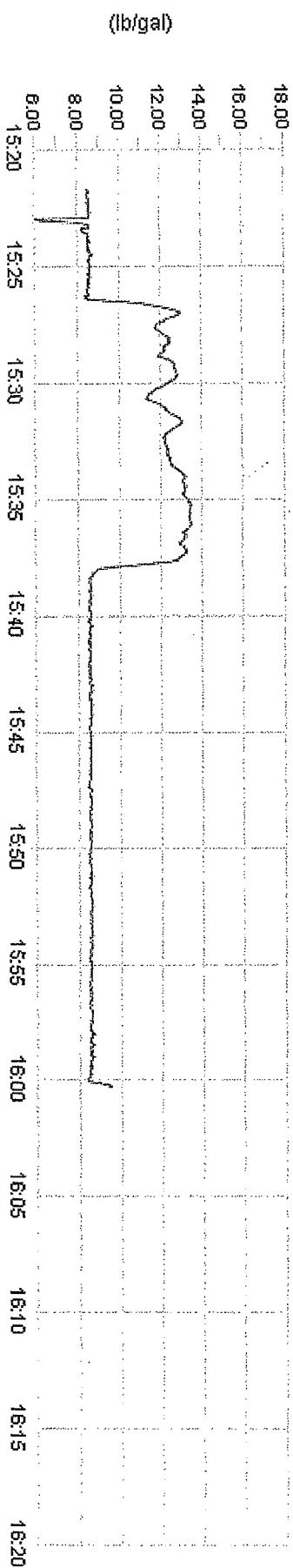
Unit 740017 Rate Total



Unit 740017 Pump Pressure



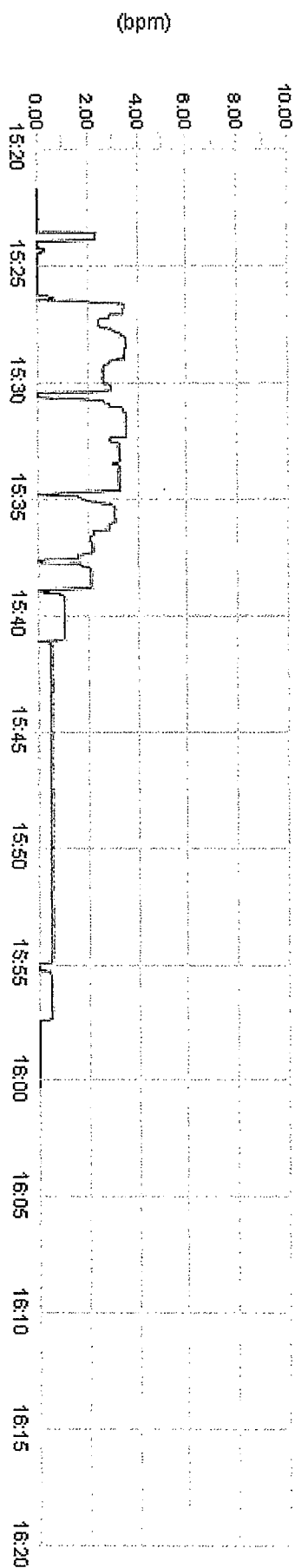
Unit 740017 Density



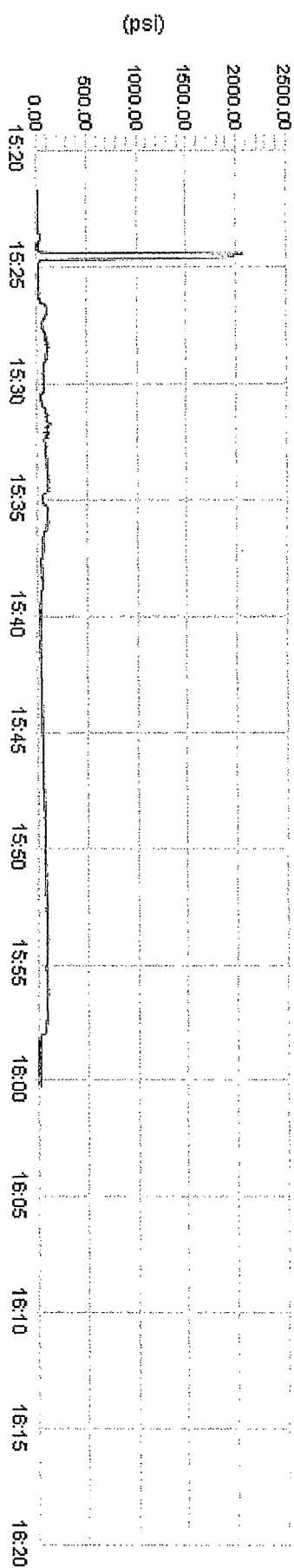


Client	Augastus Energy	Client Rep	Justin Stone	Supervisor	Ty Pratt
Ticket No.	9154252	Well Name	White 44-03	Unit No.	740017
Location	Sec 3 T1S R46W	Job Type	Surface Casing	Service District	51 Wray
Comments	Pumped H2O Cement, Fresh H2O				Job Date
					07/26/2010

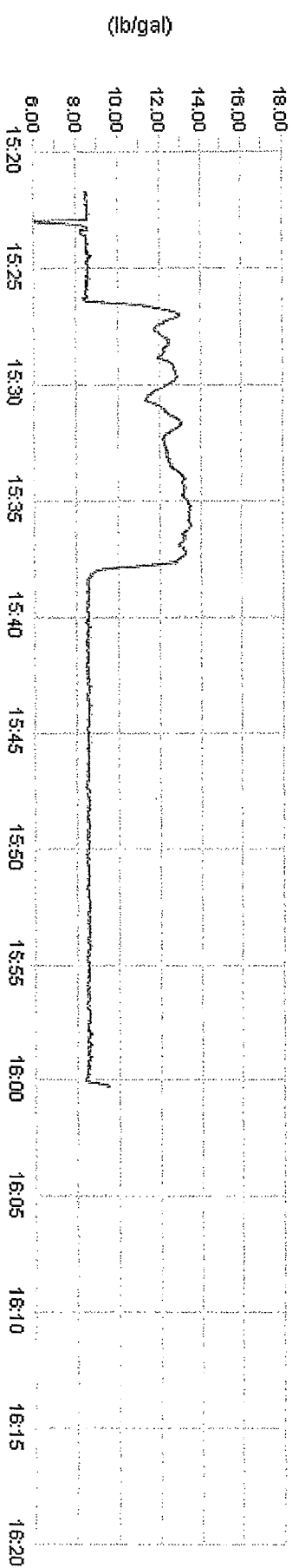
Unit 740017 Rate Total



Unit 740017 Pump Pressure



Unit 740017 Density





PRE-JOB SAFETY MEETING - JOB SAFETY ANALYSIS (JSA)

Customer Name: Augustus Energy Date: 7-21-10 Service Ticket No.: 9154252

Total People on Location: 09 Location: Sec 3 T15 R46W
White Mt. 11-13

Emergency Response Plan: (muster point, emergency procedures, location of emergency shower, eyewash station, fire extinguishers, first aid kits)
Meet at Lease Entrance

How do we signal "STOP WORK"? Move Hand Across Throat

Safety Meeting Discussion: (Topics should include brief job scope, PPE, site specific hazards, environmental issues, people's responsibilities)

Cement Dust use guide wear PPE
P.T.

Job Safety Analysis:

1. Break the job down into steps.	2. Identify the hazards associated with each step.	3. Develop ways to control the hazards.
Sequence of Basic Job Steps	Potential Hazards	Recommended Controls
<u>Move on Lease</u>	<u>Hitting something</u>	<u>use guide</u>
<u>Pressure Test</u>	<u>Lines Buckling</u>	<u>stay back</u>
<u>Rigging</u>	<u>Hammers Chipping</u>	<u>use two people</u>
<u>Pump Cement</u>	<u>Cement Clouds</u>	<u>wear PPE</u>
<u>Rig cut</u>	<u>Hammers Chipping</u>	<u>use two people</u>
<u>Move off lease</u>	<u>Hitting something</u>	<u>use guide</u>
	<u>Pressure</u>	
	<u>Radiation</u>	
	<u>Temperature Extremes</u>	

Attendees: (Print name and sign. If there are not enough lines use a second document from this book and enter the same Service Ticket No.)

[Signature]
C. C. Coace
[Signature]
[Signature]
[Signature]
[Signature]

Customer Representative:

Justin St. C.
Print Name

[Signature]
Signature

Sanjel Supervisor:

[Signature]
U. P. K.
Print Name

[Signature]
Signature