

WELL LOCATION CERTIFICATE

THIS MAP DOES NOT REPRESENT A BOUNDARY SURVEY

SECTION 16
TOWNSHIP 3 NORTH
RANGE 65 WEST

NW COR. SEC. 16
FOUND 2.5" AC
PLS 23501

S 89°41'08" W 5121.46'

NE COR. SEC. 16
FOUND 3.25" BC
PLS 16415

S 00°30'01" E 5282.53'

N 00°41'37" W 5261.90'

155'

EXISTING MEGAN H 16-33

MEGAN
H16-99HZ
ELEV= 4856'

1240'

DISPLACEMENT
S 85°34'55" E 4498.23'

Landing Point is 1182' FSL, 804' FWL

500'

850'

SW COR. SEC. 16
FOUND 2.5" AC
PLS 32829

N 89°27'16" E 5139.20'

SE COR. SEC. 16
FOUND 3.25" BC
PLS 16415



IN ACCORDANCE WITH A REQUEST FROM JOE JOHNSON - NOBLE ENERGY INC., BASELINE ENGINEERING CORP. HAS DETERMINED THE LOCATION OF THE MEGAN H16-99HZ TO BE 1240' FSL AND 155' FWL, AS MEASURED AT NINETY (90) DEGREES FROM THE SECTION LINE OF SECTION 16, TOWNSHIP 3 NORTH, RANGE 65 WEST AND THE BOTTOM HOLE LOCATION TO BE 850' FSL AND 500' FWL OF SECTION 16, TOWNSHIP 3 NORTH, RANGE 65 WEST, 6TH PRINCIPAL MERIDIAN, WELD COUNTY, COLORADO.

I HEREBY CERTIFY THAT THIS WELL LOCATION CERTIFICATE WAS PREPARED BY ME, OR UNDER MY DIRECT SUPERVISION, THAT THE FIELD WORK WAS COMPLETED ON 9/03/2010, THAT IT IS NOT A LAND SURVEY PLAT OR AN IMPROVEMENT SURVEY PLAT, AND THAT IT IS NOT TO BE RELIED UPON FOR ESTABLISHMENT OF FENCE, BUILDING, OR OTHER FUTURE IMPROVEMENT LINES.

Scale 1" = 1000 ft

NOTES:

- 1) LAT/LONG SHOWN ARE BASED ON A GPS OBSERVATION (NAD83).
- 2) BEARINGS SHOWN ARE GRID BEARINGS OF THE COLORADO STATE PLANE COORDINATE SYSTEM, NORTH ZONE, NORTH AMERICAN DATUM 1983/2007.
- 3) GROUND ELEVATIONS ARE BASED ON A GPS OBSERVATION (NAVD 88 DATUM).
- 4) ALL DISTANCES SHOWN ARE FIELD MEASURED UNLESS OTHERWISE NOTED.
- 5) THE NEAREST EXISTING WELL IS: MEGAN H16-33 40' NORTH.
- 6) IMPROVEMENTS: SEE VISIBLE IMPROVEMENTS EXHIBIT FOR ALL VISIBLE IMPROVEMENTS WITHIN 600' OF WELL HEAD.
- 7) SURFACE USE: OPEN RANGE.

SURFACE HOLE:
LATITUDE: 40.221572° N
LONGITUDE: 104.677201° W
PDOP: 2.5
1/4, 1/4: SW1/4SW1/4
NEAREST PROPERTY LINE: 155' WEST

BOTTOM HOLE:
LATITUDE: 40.220505° N
LONGITUDE: 104.661157° W

LEGEND

- - FOUND/SET SURVEY MONUMENT PER MONUMENT RECORD EXCEPTIONS NOTED.
- - CALCULATED SURVEY MONUMENT POSITION
- (C) - CALCULATED DIMENSION

NOTICE: According to Colorado law you MUST commence any legal action based upon any defect in this WLC within three years after you first discover such defect. In no event may any action based upon any defect in this WLC be commenced more than ten years from this said date of the certification show hereon.



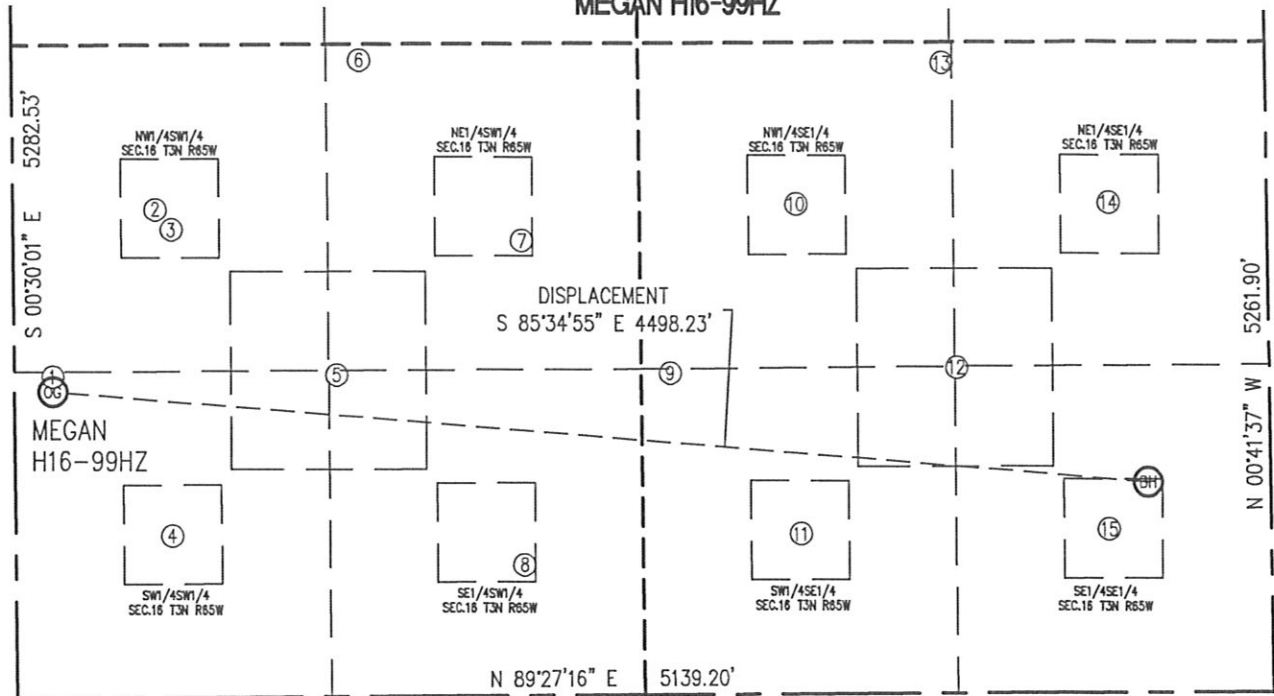
John C. Barickman
Professional Land Surveyor Registration No. 28258
State of Colorado
FOR AND ON BEHALF OF BASELINE ENGINEERING CORP.

Completed
9/07/2010

JOB # NOR3N65W16-01

SITE SKETCH

MEGAN H16-99HZ

SECTION 16
TOWNSHIP 3 NORTH
RANGE 65 WEST

① MEGAN H16-33 SW1/4SW1/4 155' FWL 1280' FSL EL=4856' LAT: 40.221681° N LONG: 104.677201° W PDOP: 2.1	② MEGAN H16-12J NW1/4SW1/4 582' FWL 1975' FSL EL=4853' LAT: 40.223591° N LONG: 104.675671° W PDOP: 1.8	③ MEGAN H 16-12 NW1/4SW1/4 646' FWL 1894' FSL EL=4853' LAT: 40.223369° N LONG: 104.645441° W PDOP: 2.1	④ MEGAN H16-13 SW1/4SW1/4 639' FWL 654' FSL EL=4851' LAT: 40.219964° N LONG: 104.675468° W PDOP: 1.6	⑤ STATE 2 SE1/4SW1/4 1317' FWL 1300' FSL EL=4845' LAT: 40.221739° N LONG: 104.673039° W PDOP: 2.0
⑥ MEGAN H16-20 NE1/4SW1/4 1420' FWL 2576' FSL EL=4849' LAT: 40.225238° N LONG: 104.672668° W PDOP: 1.6	⑦ MEGAN H16-11 NE1/4SW1/4 2082' FWL 1840' FSL EL=4846' LAT: 40.223220° N LONG: 104.670300° W PDOP: 1.6	⑧ MEGAN H 16-14 SE1/4SW1/4 2082' FWL 528' FDL EL=4836' LAT: 40.219621° N LONG: 104.670304° W PDOP: 1.8	⑨ MEGAN H16-24 SW1/4SE1/4 2450' FEL 1300' FSL EL=4837' LAT: 40.221740° N LONG: 104.668141° W PDOP: 2.0	⑩ MEGAN H 16-10 NW1/4SE1/4 1925' FEL 1982' FSL EL=4824' LAT: 40.223611° N LONG: 104.666271° W PDOP: 2.1
⑪ MEGAN H16-15 SW1/4SE1/4 1923' FEL 649' FSL EL=4833' LAT: 40.219953° N LONG: 104.666250° W PDOP: 2.1	⑫ MEGAN H16-4J SE1/4SE1/4 1275' FEL 1318' FSL EL=4822' LAT: 40.221788° N LONG: 104.663934° W PDOP: 2.5	⑬ MEGAN H 16-22 NW1/4SE1/4 1319' FEL 2552' FSL EL=4819' LAT: 40.225174° N LONG: 104.664105° W PDOP: 2.6	⑭ MEGAN H16-9 NE1/4SE1/4 646' FEL 1983' FSL EL=4818' LAT: 40.223614° N LONG: 104.661792° W PDOP: 1.6	⑮ MEGAN H 16-16 SE1/4SE1/4 661' FEL 660' FSL EL=4815' LAT: 40.219983° N LONG: 104.661733° W PDOP: 1.6

NOTES:

- THIS SKETCH DOES NOT REPRESENT A BOUNDARY SURVEY.
- THE DATUM FOR THE LATITUDES AND LONGITUDES ON THIS SKETCH IS NAD83.

0 750
Scale 1" = 750 ft

