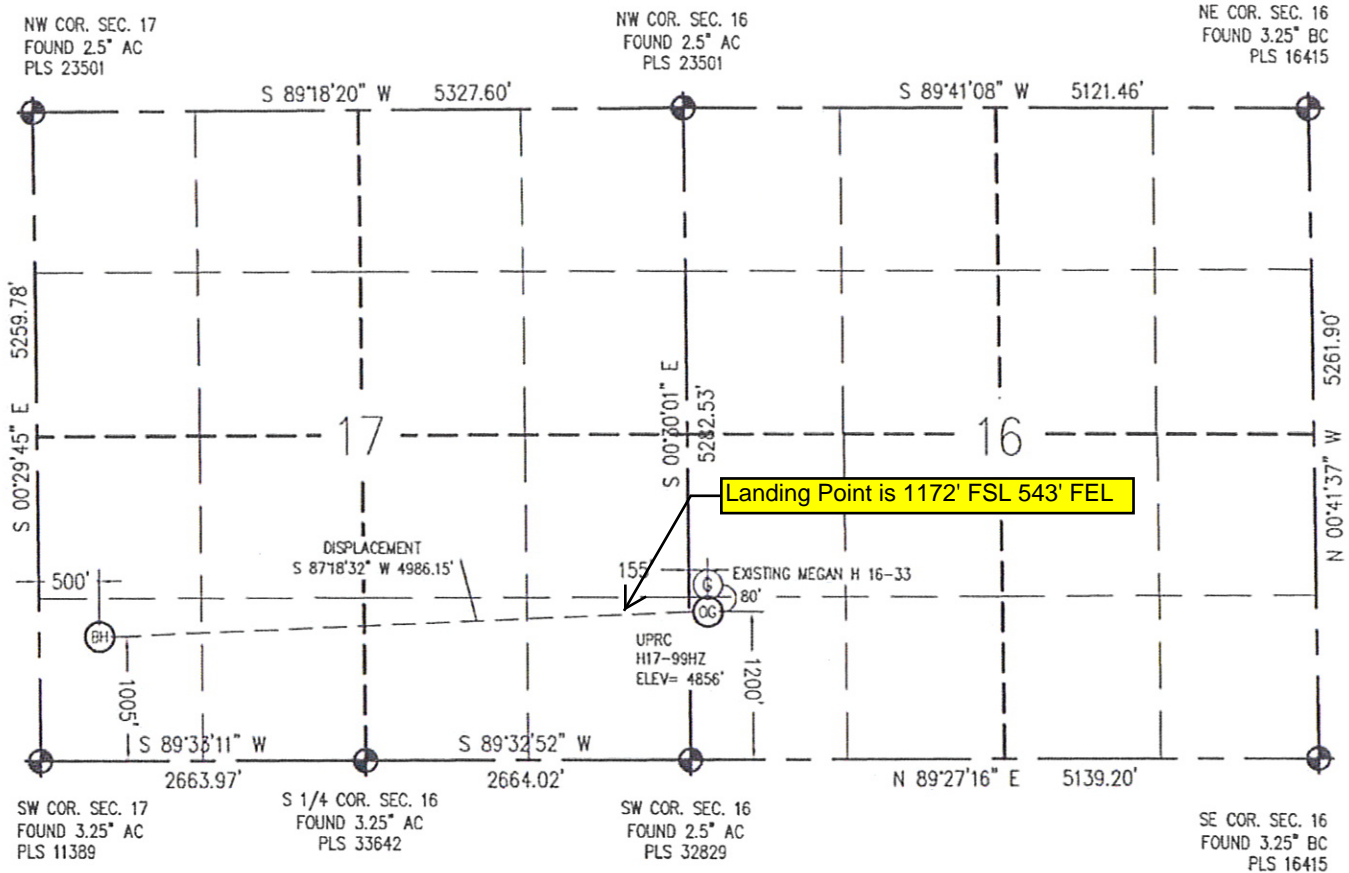


WELL LOCATION CERTIFICATE

THIS MAP DOES NOT REPRESENT A BOUNDARY SURVEY

SECTION 16 & 17
TOWNSHIP 3 NORTH
RANGE 65 WEST



IN ACCORDANCE WITH A REQUEST FROM JOE JOHNSON - NOBLE ENERGY INC., BASELINE ENGINEERING CORP. HAS DETERMINED THE LOCATION OF THE UPRC H17-99HZ TO BE 1200' FSL AND 155' FWL, AS MEASURED AT NINETY (90) DEGREES FROM THE SECTION LINE OF SECTION 16, TOWNSHIP 3 NORTH, RANGE 65 WEST AND THE BOTTOM HOLE LOCATION TO BE 1005' FSL AND 500' FWL OF SECTION 17, TOWNSHIP 3 NORTH, RANGE 65 WEST, 6TH PRINCIPAL MERIDIAN, WELD COUNTY, COLORADO.

I HEREBY CERTIFY THAT THIS WELL LOCATION CERTIFICATE WAS PREPARED BY ME, OR UNDER MY DIRECT SUPERVISION, THAT THE FIELD WORK WAS COMPLETED ON 9/03/2010, THAT IT IS NOT A LAND SURVEY PLAT OR AN IMPROVEMENT SURVEY PLAT, AND THAT IT IS NOT TO BE RELIED UPON FOR ESTABLISHMENT OF FENCE, BUILDING, OR OTHER FUTURE IMPROVEMENT LINES.

Scale 1" = 1500 ft

NOTES:

- 1) LAT/LONG SHOWN ARE BASED ON A GPS OBSERVATION (NAD83).
- 2) BEARINGS SHOWN ARE GRID BEARINGS OF THE COLORADO STATE PLANE COORDINATE SYSTEM, NORTH ZONE, NORTH AMERICAN DATUM 1983/2007.
- 3) GROUND ELEVATIONS ARE BASED ON A GPS OBSERVATION (NAVD 88 DATUM).
- 4) ALL DISTANCES SHOWN ARE FIELD MEASURED UNLESS OTHERWISE NOTED.
- 5) THE NEAREST EXISTING WELL IS: MEGAN H16-33 80' NORTH.
- 6) IMPROVEMENTS: SEE VISIBLE IMPROVEMENTS EXHIBIT FOR ALL VISIBLE IMPROVEMENTS WITHIN 600' OF WELL HEAD.
- 7) SURFACE USE: OPEN RANGE.

SURFACE HOLE:
LATITUDE: 40.221462° N
LONGITUDE: 104.677201° W
POOP: 2.5
1/4, 1/4: SW1/4SW1/4
NEAREST PROPERTY LINE: 155' W

BOTTOM HOLE:
LATITUDE: 40.220945° N
LONGITUDE: 104.695040° W

LEGEND

- - FOUND/SET SURVEY MONUMENT PER MONUMENT RECORD EXCEPTIONS NOTED.
- - CALCULATED SURVEY MONUMENT POSITION
- (C) - CALCULATED DIMENSION

NOTICE: According to Colorado law you MUST commence any legal action based upon any defect in this W.L.C. within three years after you first discover such defect. In no event may any action based upon any defect in this W.L.C. be commenced more than ten years from this said date of the certification shown hereon.



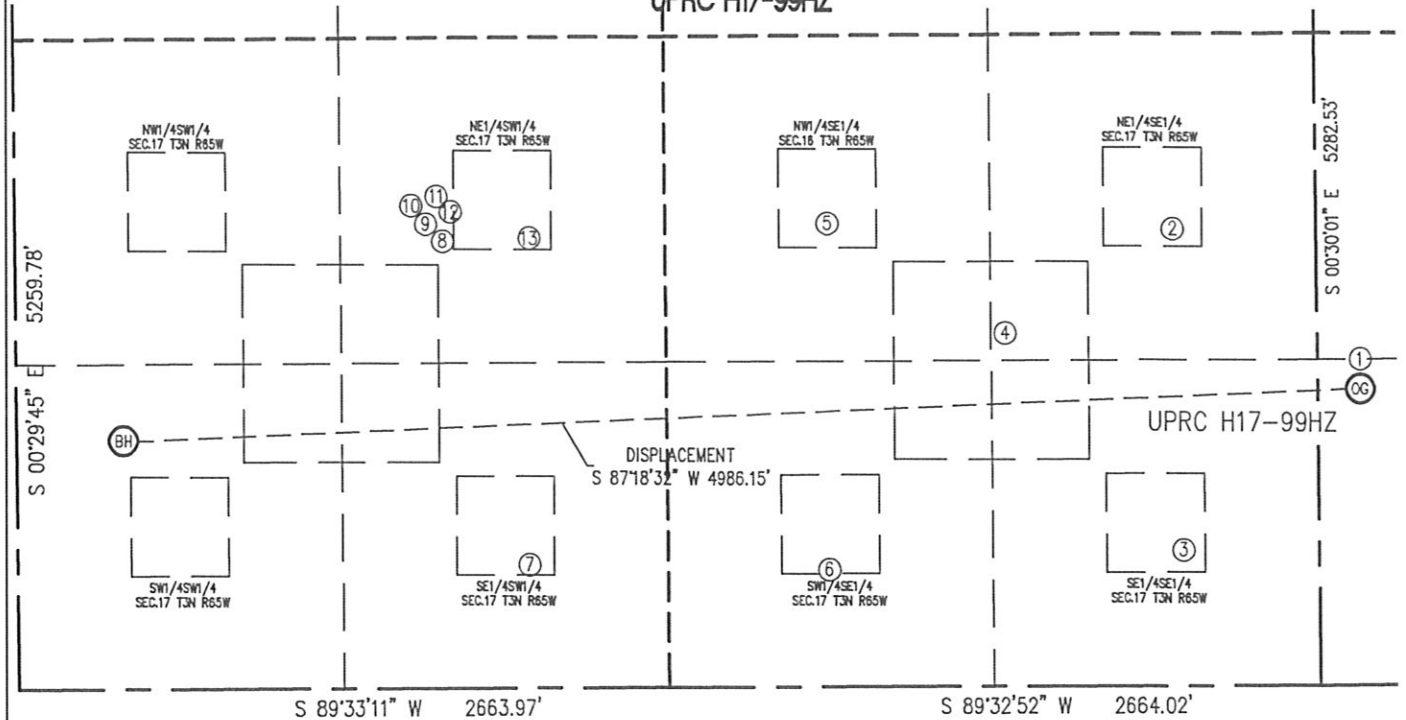
John C. Barickman
Professional Land Surveyor Registration No. 28258
State of Colorado
FOR AND ON BEHALF OF BASELINE ENGINEERING CORP.

Completed
09/07/2010

JOB #: NOB3N65W16-01

SITE SKETCH

UPRC H17-99HZ

SECTION 17
TOWNSHIP 3 NORTH
RANGE 65 WEST

- | | | | | |
|---|--|--|--|--|
| ①
MEGAN H16-33
SW1/4SW1/4
155' FWL (SEC 16)
1280' FSL (SEC 16)
EL=4856'
LAT: 40.221681° N
LONG: 104.677201° W
PDOP: 2.1 | ②
UPRC 17-9 J
NE1/4SE1/4
583' FEL
1849' FSL
EL=4867'
LAT: 40.223247° N
LONG: 104.679840° W
PDOP: 2.0 | ③
UPRC 17-16 J
SE1/4SE1/4
552' FEL
550' FSL
EL=4862'
LAT: 40.219682° N
LONG: 104.679732° W
PDOP: 1.8 | ④
UPRC H 17-23
NE1/4SE1/4
1271' FEL
1430' FSL
EL=4874'
LAT: 40.222098° N
LONG: 104.682306° W
PDOP: 2.1 | ⑤
UPRC 17-10 J
NW1/4SE1/4
1997' FEL
1876' FSL
EL=4881'
LAT: 40.223326° N
LONG: 104.684903° W
PDOP: 2.5 |
| ⑥
UPRC 17-15 J
SW1/4SE1/4
2003' FEL
475' FSL
EL=4880'
LAT: 40.219481° N
LONG: 104.684926° W
PDOP: 1.8 | ⑦
UPRC 17-14 J
SE1/4SW1/4
2097' FWL
500' FSL
EL=4895'
LAT: 40.219552° N
LONG: 104.689322° W
PDOP: 1.6 | ⑧
UPRC H 17-24
NE1/4SW1/4
1707' FWL
1874' FDL
EL=4916'
LAT: 40.223326° N
LONG: 104.690718° W
PDOP: 1.6 | ⑨
UPRC H 17-25
NE1/4SW1/4
1691' FWL
1887' FSL
EL=4916'
LAT: 40.223362° N
LONG: 104.690775° W
PDOP: 1.8 | ⑩
UPRC H 17-20
NE1/4SW1/4
1675' FWL
1900' FSL
EL=4916'
LAT: 40.223397° N
LONG: 104.690830° W
PDOP: 1.6 |
| ⑪
UPRC 17-12 J5
NE1/4SW1/4
1761' FWL
1943' FSL
EL=4921'
LAT: 40.223516° N
LONG: 104.690524° W
PDOP: 1.6 | ⑫
REI H 17-32D
NE1/4SW1/4
1786' FEL
1928' FSL
EL=4921'
LAT: 40.223474° N
LONG: 104.690435° W
PDOP: 1.8 | ⑬
UPRC 17-11 J
NE1/4SW1/4
2135' FWL
1849' FSL
EL=4906'
LAT: 40.223254° N
LONG: 104.689183° W
PDOP: 1.6 | | |

NOTES:

- THIS SKETCH DOES NOT REPRESENT A BOUNDARY SURVEY.
- THE DATUM FOR THE LATITUDES AND LONGITUDES ON THIS SKETCH IS NAD83.

0 750
Scale 1" = 750 ft

