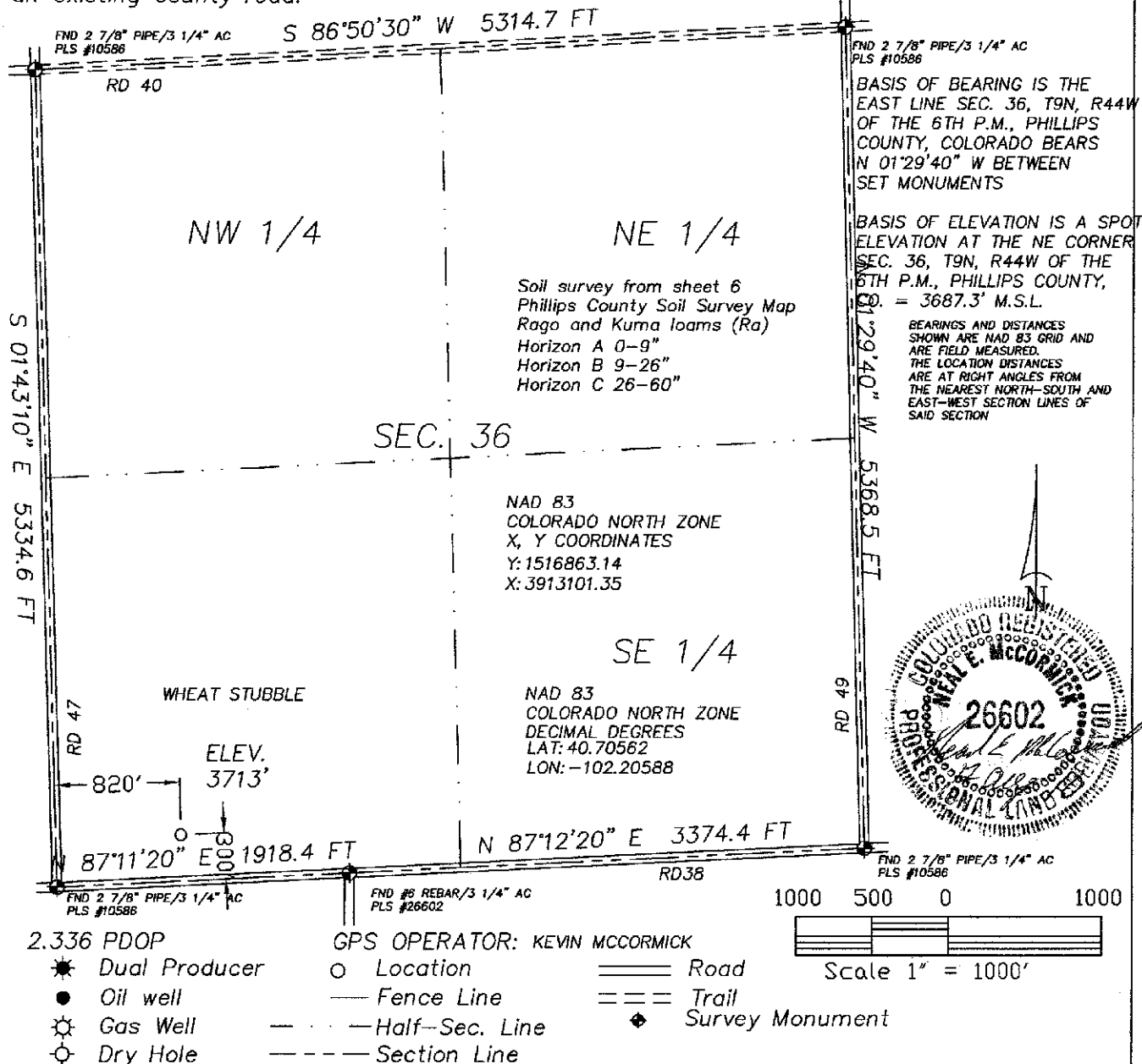


There are no visible improvements within 400 feet of the location, except an existing county road.



GREAT PLAINS
SURVEYING, INC.

DATE OF FIELD WORK:

07 AUGUST 2010

DATE OF DRAWING:

11 AUGUST 2010

OLTJENBRUNS #944-36-14

SW 1/4 SW 1/4 SEC. 36, T9N, R44W

BLACK RAVEN ENERGY, INC.

PHILLIPS COUNTY, COLORADO