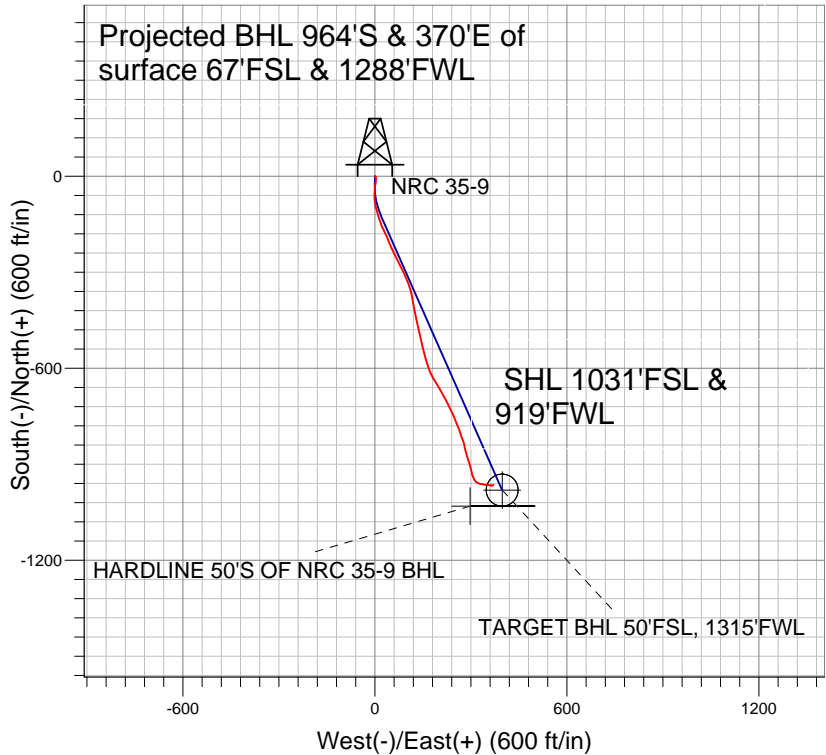


## Anadarko, Weld County CO

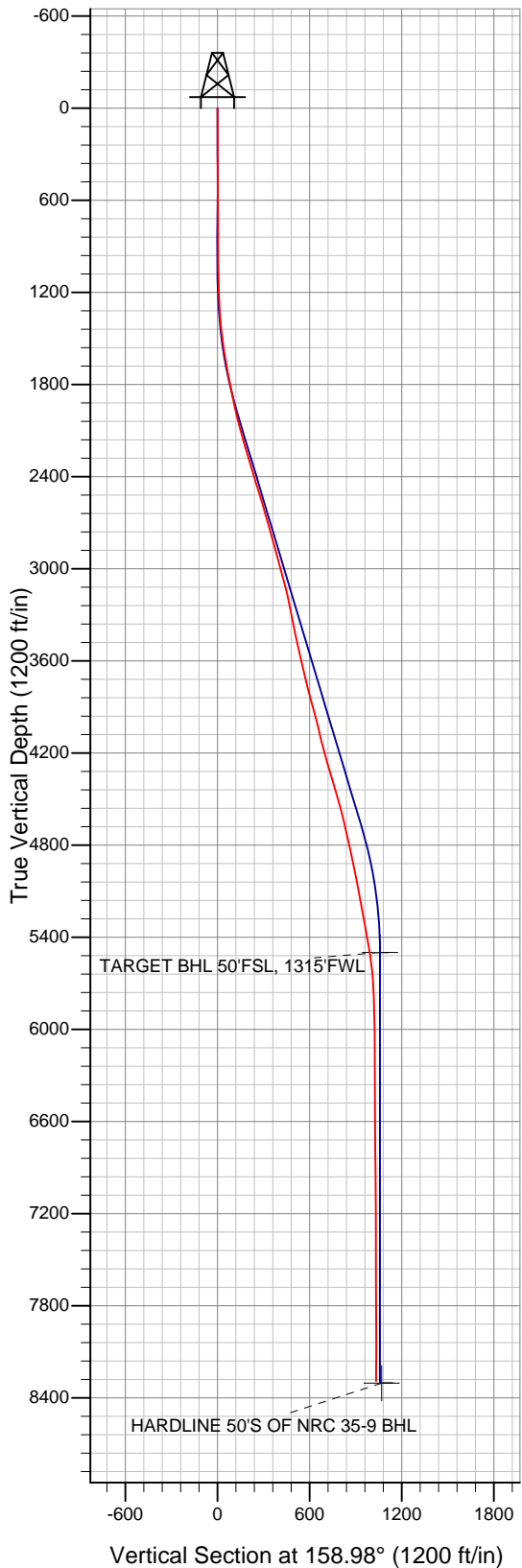


### LEGEND

- △ NRC 35-9, Wellbore #1, Plan #2 (5-27-10) V0
- Survey #1

## Final Survey Plot

Projected Final Survey -  
 8414'MD & 8291'TVD @ 1033' VS  
 0.8 deg Inc 45.3 deg AZ



Project: SEC.9-T1N-R67W  
 Site: NRC 19-9 Pad Sec.9-T1N-R67W  
 Well: NRC 35-9  
 Plan: Wellbore #1



# **Anadarko, Weld County CO**

**SEC.9-T1N-R67W**

**NRC 19-9 Pad Sec.9-T1N-R67W**

**NRC 35-9**

**Wellbore #1**

**Survey: Survey #1**

## **Standard Survey Report**

**01 July, 2010**

Survey									
Measured Depth (ft)	Inclination (°)	Azimuth (°)	Vertical Depth (ft)	+N/-S (ft)	+E/-W (ft)	Vertical Section (ft)	Dogleg Rate (°/100ft)	Build Rate (°/100ft)	Turn Rate (°/100ft)
0.0	0.00	0.00	0.0	0.0	0.0	0.0	0.00	0.00	0.00
177.0	0.30	144.90	177.0	-0.4	0.3	-0.4	0.17	0.17	0.00
238.0	0.40	77.40	238.0	-0.5	0.6	-0.5	0.65	0.16	-110.66
331.0	0.30	134.50	331.0	-0.6	1.1	-0.6	0.37	-0.11	61.40
425.0	0.30	99.10	425.0	-0.8	1.5	-0.8	0.19	0.00	-37.66
518.0	0.30	157.00	518.0	-1.0	1.8	-1.0	0.31	0.00	62.26
610.0	0.40	150.00	610.0	-1.5	2.1	-1.5	0.12	0.11	-7.61
703.0	0.30	116.10	703.0	-1.9	2.4	-1.9	0.24	-0.11	-36.45
795.0	0.40	177.40	795.0	-2.4	2.7	-2.4	0.40	0.11	66.63
887.0	0.20	170.10	887.0	-2.8	2.7	-2.8	0.22	-0.22	-7.93
976.0	0.20	178.90	976.0	-3.1	2.7	-3.1	0.03	0.00	9.89
1,046.0	0.60	168.70	1,046.0	-3.6	2.8	-3.6	0.58	0.57	-14.57
1,089.0	0.90	173.70	1,089.0	-4.2	2.9	-4.2	0.71	0.70	11.63

<b>Company:</b>	Anadarko, Weld County CO	<b>Local Co-ordinate Reference:</b>	Well NRC 35-9
<b>Project:</b>	SEC.9-T1N-R67W	<b>TVD Reference:</b>	WELL @ 5067.0ft (Original Well Elev)
<b>Site:</b>	NRC 19-9 Pad Sec.9-T1N-R67W	<b>MD Reference:</b>	WELL @ 5067.0ft (Original Well Elev)
<b>Well:</b>	NRC 35-9	<b>North Reference:</b>	True
<b>Wellbore:</b>	Wellbore #1	<b>Survey Calculation Method:</b>	Minimum Curvature
<b>Design:</b>	Wellbore #1	<b>Database:</b>	Landmark

Survey										
Measured Depth (ft)	Inclination (°)	Azimuth (°)	Vertical Depth (ft)	+N/-S (ft)	+E/-W (ft)	Vertical Section (ft)	Dogleg Rate (°/100ft)	Build Rate (°/100ft)	Turn Rate (°/100ft)	
1,135.0	1.60	170.90	1,135.0	-5.2	3.0	-5.2	1.53	1.52	-6.09	
1,180.0	2.10	170.60	1,179.9	-6.6	3.3	-6.6	1.11	1.11	-0.67	
1,223.0	2.70	178.50	1,222.9	-8.4	3.4	-8.4	1.59	1.40	18.37	
1,268.0	3.30	183.70	1,267.8	-10.7	3.4	-10.7	1.46	1.33	11.56	
1,314.0	4.20	188.60	1,313.7	-13.7	3.0	-13.7	2.08	1.96	10.65	
1,359.0	4.50	185.80	1,358.6	-17.1	2.6	-17.1	0.82	0.67	-6.22	
1,402.0	5.70	188.20	1,401.4	-20.9	2.1	-20.9	2.83	2.79	5.58	
1,446.0	7.20	186.30	1,445.2	-25.8	1.5	-25.8	3.44	3.41	-4.32	
1,491.0	8.10	185.20	1,489.8	-31.8	0.9	-31.8	2.03	2.00	-2.44	
1,535.0	9.00	186.00	1,533.3	-38.3	0.3	-38.3	2.06	2.05	1.82	
1,579.0	9.80	186.10	1,576.7	-45.4	-0.5	-45.4	1.82	1.82	0.23	
1,623.0	10.30	184.60	1,620.0	-53.1	-1.2	-53.1	1.28	1.14	-3.41	
1,667.0	10.40	179.70	1,663.3	-61.0	-1.5	-61.0	2.01	0.23	-11.14	
1,710.0	10.40	175.30	1,705.6	-68.7	-1.1	-68.7	1.85	0.00	-10.23	
1,754.0	11.20	172.80	1,748.8	-76.9	-0.3	-76.9	2.11	1.82	-5.68	
1,797.0	11.70	171.80	1,791.0	-85.4	0.9	-85.4	1.25	1.16	-2.33	
1,841.0	11.90	169.00	1,834.0	-94.2	2.4	-94.2	1.38	0.45	-6.36	
1,886.0	11.60	165.90	1,878.1	-103.2	4.4	-103.2	1.55	-0.67	-6.89	
1,930.0	12.00	163.30	1,921.2	-111.9	6.8	-111.9	1.51	0.91	-5.91	
1,973.0	12.70	163.30	1,963.2	-120.7	9.4	-120.7	1.63	1.63	0.00	
2,018.0	13.50	161.40	2,007.0	-130.4	12.5	-130.4	2.02	1.78	-4.22	
2,064.0	14.10	159.80	2,051.7	-140.7	16.1	-140.7	1.55	1.30	-3.48	
2,109.0	15.30	158.80	2,095.2	-151.4	20.2	-151.4	2.73	2.67	-2.22	
2,154.0	15.90	155.70	2,138.5	-162.6	24.9	-162.6	2.28	1.33	-6.89	
2,199.0	16.20	153.50	2,181.8	-173.8	30.2	-173.8	1.51	0.67	-4.89	
2,244.0	16.40	154.90	2,225.0	-185.2	35.7	-185.2	0.98	0.44	3.11	
2,290.0	17.00	157.90	2,269.0	-197.3	41.0	-197.3	2.28	1.30	6.52	
2,333.0	16.60	156.90	2,310.2	-208.8	45.8	-208.8	1.15	-0.93	-2.33	
2,422.0	16.40	154.80	2,395.5	-231.8	56.1	-231.8	0.71	-0.22	-2.36	
2,511.0	18.40	154.70	2,480.5	-255.9	67.4	-255.9	2.25	2.25	-0.11	
2,601.0	16.10	154.00	2,566.4	-279.9	79.0	-279.9	2.57	-2.56	-0.78	
2,690.0	16.10	154.00	2,651.9	-302.1	89.8	-302.1	0.00	0.00	0.00	
2,778.0	15.60	154.60	2,736.6	-323.8	100.2	-323.8	0.60	-0.57	0.68	
2,867.0	15.50	162.90	2,822.3	-346.0	108.9	-346.0	2.50	-0.11	9.33	
2,958.0	15.10	169.50	2,910.1	-369.2	114.6	-369.2	1.96	-0.44	7.25	
3,048.0	15.60	169.60	2,996.9	-392.7	118.9	-392.7	0.56	0.56	0.11	
3,137.0	15.30	170.60	3,082.7	-416.0	123.0	-416.0	0.45	-0.34	1.12	
3,227.0	13.10	166.40	3,169.9	-437.7	127.3	-437.7	2.70	-2.44	-4.67	
3,316.0	11.40	166.30	3,256.9	-456.0	131.8	-456.0	1.91	-1.91	-0.11	
3,405.0	10.50	169.60	3,344.3	-472.5	135.3	-472.5	1.23	-1.01	3.71	
3,494.0	12.50	165.80	3,431.5	-489.8	139.2	-489.8	2.40	2.25	-4.27	
3,583.0	13.30	167.90	3,518.2	-509.2	143.7	-509.2	1.04	0.90	2.36	
3,673.0	13.10	167.60	3,605.9	-529.3	148.0	-529.3	0.23	-0.22	-0.33	
3,764.0	13.50	165.60	3,694.4	-549.6	152.9	-549.6	0.67	0.44	-2.20	
3,854.0	14.10	163.30	3,781.8	-570.3	158.7	-570.3	0.90	0.67	-2.56	
3,944.0	15.00	161.80	3,868.9	-591.9	165.4	-591.9	1.08	1.00	-1.67	
4,035.0	14.70	157.60	3,956.9	-613.7	173.5	-613.7	1.23	-0.33	-4.62	
4,123.0	14.50	149.00	4,042.1	-633.5	183.4	-633.5	2.47	-0.23	-9.77	
4,214.0	14.90	147.50	4,130.1	-653.1	195.6	-653.1	0.61	0.44	-1.65	
4,304.0	14.90	150.30	4,217.1	-673.0	207.6	-673.0	0.80	0.00	3.11	
4,395.0	15.20	153.00	4,304.9	-693.7	218.8	-693.7	0.84	0.33	2.97	
4,483.0	17.40	153.90	4,389.4	-715.8	229.8	-715.8	2.52	2.50	1.02	
4,572.0	17.10	154.80	4,474.4	-739.6	241.2	-739.6	0.45	-0.34	1.01	
4,661.0	15.10	154.90	4,559.9	-762.0	251.7	-762.0	2.25	-2.25	0.11	

<b>Company:</b>	Anadarko, Weld County CO	<b>Local Co-ordinate Reference:</b>	Well NRC 35-9
<b>Project:</b>	SEC.9-T1N-R67W	<b>TVD Reference:</b>	WELL @ 5067.0ft (Original Well Elev)
<b>Site:</b>	NRC 19-9 Pad Sec.9-T1N-R67W	<b>MD Reference:</b>	WELL @ 5067.0ft (Original Well Elev)
<b>Well:</b>	NRC 35-9	<b>North Reference:</b>	True
<b>Wellbore:</b>	Wellbore #1	<b>Survey Calculation Method:</b>	Minimum Curvature
<b>Design:</b>	Wellbore #1	<b>Database:</b>	Landmark

#### Survey

Measured Depth (ft)	Inclination (°)	Azimuth (°)	Vertical Depth (ft)	+N/-S (ft)	+E/-W (ft)	Vertical Section (ft)	Dogleg Rate (°/100ft)	Build Rate (°/100ft)	Turn Rate (°/100ft)
4,750.0	12.70	162.60	4,646.3	-781.8	259.6	-781.8	3.40	-2.70	8.65
4,837.0	12.40	161.90	4,731.2	-799.8	265.3	-799.8	0.39	-0.34	-0.80
4,928.0	12.40	157.80	4,820.1	-818.1	272.0	-818.1	0.97	0.00	-4.51
5,015.0	12.80	162.90	4,905.0	-836.0	278.4	-836.0	1.36	0.46	5.86
5,105.0	11.40	169.90	4,993.0	-854.3	282.9	-854.3	2.25	-1.56	7.78
5,196.0	9.60	165.40	5,082.5	-870.5	286.4	-870.5	2.17	-1.98	-4.95
5,283.0	10.40	161.10	5,168.2	-884.9	290.8	-884.9	1.26	0.92	-4.94
5,373.0	11.20	159.00	5,256.6	-900.8	296.5	-900.8	0.99	0.89	-2.33
5,464.0	10.60	171.60	5,345.9	-917.3	300.9	-917.3	2.69	-0.66	13.85
5,550.0	10.40	162.00	5,430.5	-932.5	304.5	-932.5	2.05	-0.23	-11.16
5,630.9	8.08	157.37	5,510.3	-944.7	308.9	-944.7	3.00	-2.86	-5.72
<b>TARGET BHL 50'FSL, 1315'FWL</b>									
5,641.0	7.80	156.60	5,520.3	-946.0	309.5	-946.0	3.00	-2.81	-7.61
5,686.0	7.20	142.20	5,565.0	-951.0	312.4	-951.0	4.37	-1.33	-32.00
5,730.0	7.20	130.90	5,608.6	-955.0	316.2	-955.0	3.21	0.00	-25.68
5,775.0	7.30	119.00	5,653.3	-958.3	320.8	-958.3	3.34	0.22	-26.44
5,821.0	6.20	106.30	5,698.9	-960.4	325.7	-960.4	4.02	-2.39	-27.61
5,864.0	4.50	100.70	5,741.8	-961.3	329.6	-961.3	4.13	-3.95	-13.02
5,909.0	3.70	100.90	5,786.6	-961.9	332.8	-961.9	1.78	-1.78	0.44
5,955.0	3.00	103.20	5,832.6	-962.5	335.4	-962.5	1.55	-1.52	5.00
5,998.0	2.50	102.00	5,875.5	-963.0	337.4	-963.0	1.17	-1.16	-2.79
6,089.0	1.90	100.20	5,966.4	-963.6	340.9	-963.6	0.66	-0.66	-1.98
6,178.0	1.30	102.40	6,055.4	-964.1	343.3	-964.1	0.68	-0.67	2.47
6,267.0	1.00	95.20	6,144.4	-964.4	345.1	-964.4	0.37	-0.34	-8.09
6,356.0	0.90	87.70	6,233.4	-964.4	346.5	-964.4	0.18	-0.11	-8.43
6,444.0	0.60	84.60	6,321.4	-964.4	347.7	-964.4	0.34	-0.34	-3.52
6,532.0	0.60	73.70	6,409.4	-964.2	348.6	-964.2	0.13	0.00	-12.39
6,622.0	0.80	84.90	6,499.4	-964.0	349.7	-964.0	0.27	0.22	12.44
6,711.0	0.70	99.00	6,588.3	-964.0	350.8	-964.0	0.23	-0.11	15.84
6,800.0	1.00	99.00	6,677.3	-964.2	352.1	-964.2	0.34	0.34	0.00
6,890.0	1.00	108.60	6,767.3	-964.6	353.6	-964.6	0.19	0.00	10.67
6,981.0	1.00	96.30	6,858.3	-965.0	355.2	-965.0	0.24	0.00	-13.52
7,071.0	0.70	105.20	6,948.3	-965.2	356.5	-965.2	0.36	-0.33	9.89
7,162.0	0.90	106.70	7,039.3	-965.5	357.7	-965.5	0.22	0.22	1.65
7,252.0	0.70	99.00	7,129.3	-965.8	358.9	-965.8	0.25	-0.22	-8.56
7,342.0	0.80	91.50	7,219.3	-965.9	360.1	-965.9	0.16	0.11	-8.33
7,432.0	0.80	89.90	7,309.3	-965.9	361.4	-965.9	0.02	0.00	-1.78
7,523.0	1.00	93.80	7,400.3	-966.0	362.8	-966.0	0.23	0.22	4.29
7,612.0	0.20	230.30	7,489.3	-966.1	363.4	-966.1	1.30	-0.90	153.37
7,702.0	0.40	266.60	7,579.3	-966.3	363.0	-966.3	0.30	0.22	40.33
7,792.0	0.20	99.00	7,669.3	-966.3	362.9	-966.3	0.66	-0.22	-186.22
7,882.0	0.60	99.10	7,759.2	-966.4	363.5	-966.4	0.44	0.44	0.11
7,972.0	0.60	118.70	7,849.2	-966.7	364.4	-966.7	0.23	0.00	21.78
8,062.0	0.20	106.00	7,939.2	-967.0	364.9	-967.0	0.45	-0.44	-14.11
8,152.0	1.20	71.90	8,029.2	-966.7	366.0	-966.7	1.16	1.11	-37.89
8,243.0	1.50	63.60	8,120.2	-965.9	367.9	-965.9	0.39	0.33	-9.12
8,364.0	0.80	45.30	8,241.2	-964.6	370.0	-964.6	0.65	-0.58	-15.12
8,414.0	0.80	45.30	8,291.2	-964.1	370.5	-964.1	0.00	0.00	0.00
<b>HARDLINE 50'S OF NRC 35-9 BHL</b>									

<b>Company:</b>	Anadarko, Weld County CO	<b>Local Co-ordinate Reference:</b>	Well NRC 35-9
<b>Project:</b>	SEC.9-T1N-R67W	<b>TVD Reference:</b>	WELL @ 5067.0ft (Original Well Elev)
<b>Site:</b>	NRC 19-9 Pad Sec.9-T1N-R67W	<b>MD Reference:</b>	WELL @ 5067.0ft (Original Well Elev)
<b>Well:</b>	NRC 35-9	<b>North Reference:</b>	True
<b>Wellbore:</b>	Wellbore #1	<b>Survey Calculation Method:</b>	Minimum Curvature
<b>Design:</b>	Wellbore #1	<b>Database:</b>	Landmark

Checked By: _____	Approved By: _____	Date: _____
-------------------	--------------------	-------------