

Schlumberger

PERFORM - Drilling Mechanics

2 in / hr Time Based

Real Time Log

Company: ExxonMobil Oil Corporation

Well: PCU 297 11C7

Field: Piceance Creek

County: United States

State: Colorado

Country: United States

Section: 11 APIN: 051031146900

Township: 2S Rig Name: H&P 326

Range: 97W Rig Type: Flex 4

FL: NAD 27 Colorado State Planes, Northern Zone, US Feet

FL1: Latitude: N 39° 53' 45.850" Y: 216982.00 ft US

FL2: Longitude: W 108° 15' 14.120" X: 1227407.00 ft US

Log Measured From - Drill Floor: 6993.2 ft

Ground Level: 6963.0 ft

Permanent Datum - Mean Sea Level

Acquisition Dates: 18 Feb 10 to 26 Mar 10 Other Services: Directional Drilling

Print Interval: 2/18/2010 10:22:36 PM to 3/26/2010 3:16:26 PM

Index Types: Time

Index Scales: 2" / 3600 secs

Depth Source: Driller's Depth

Depth Sensor: 3rd Party Depth

Conveyance: Drill Pipe

Print Type: Final

Spud Date: 02/16/2010



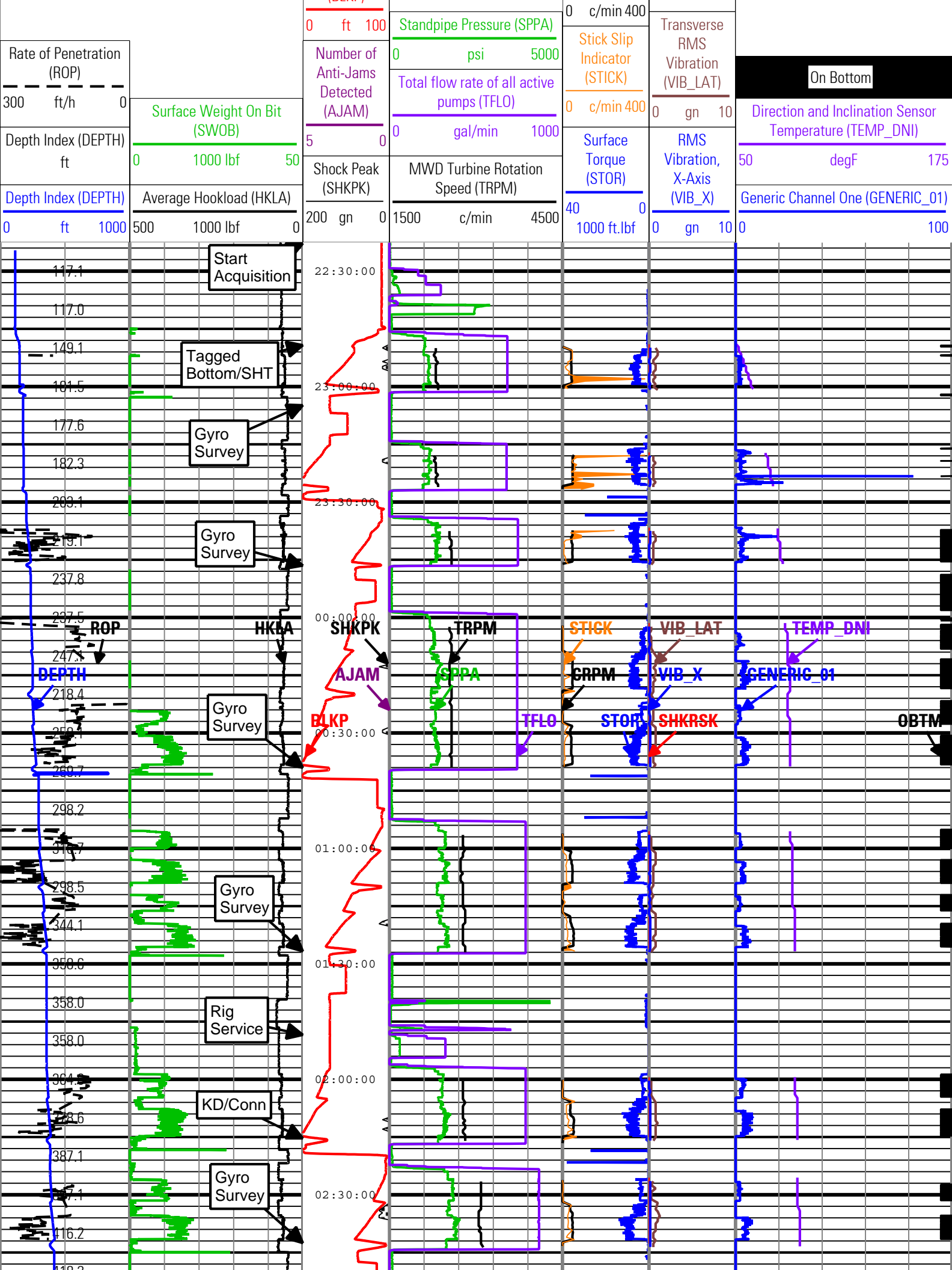
Disclaimer

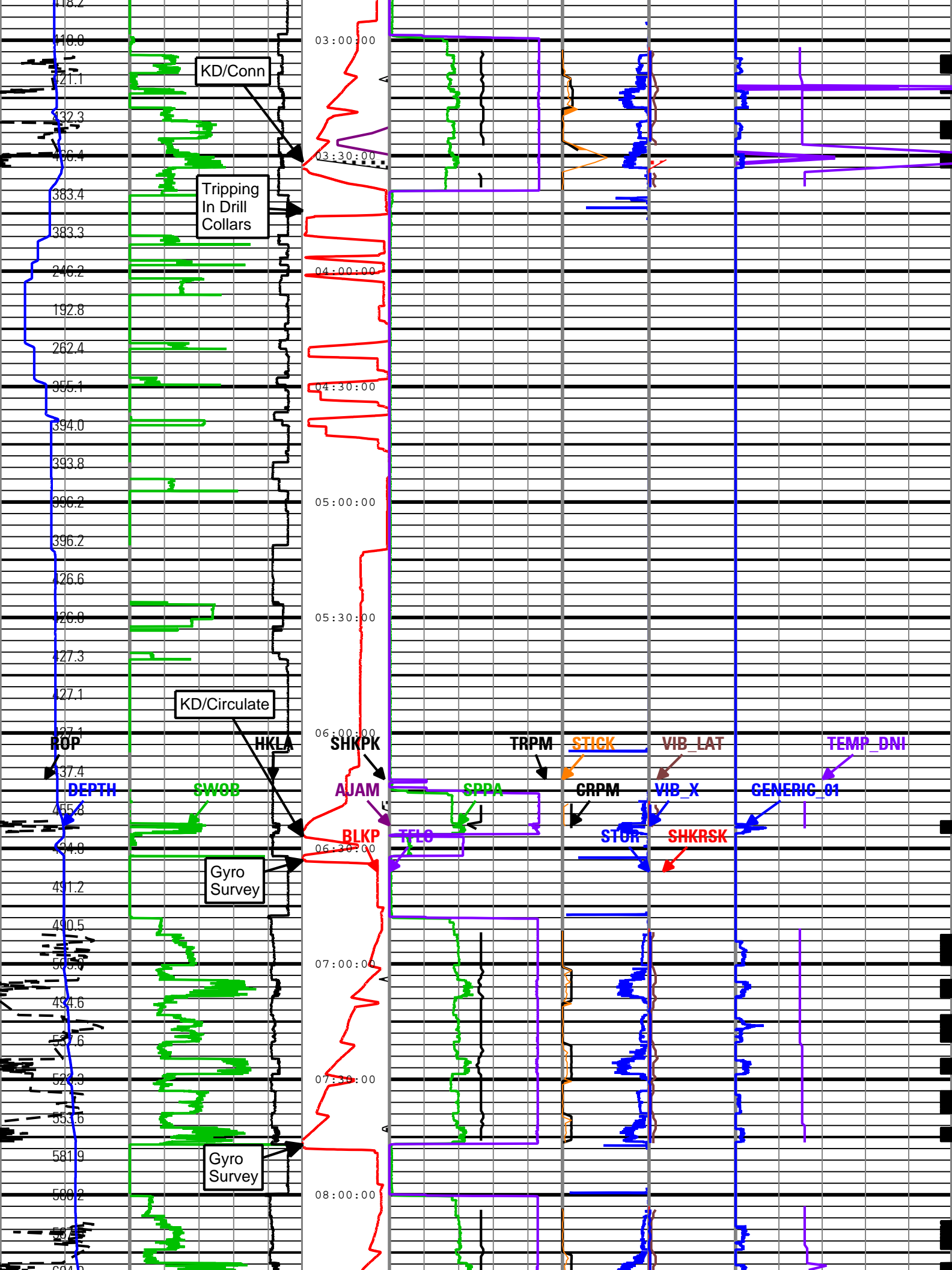
THE USE OF AND RELIANCE UPON THIS RECORDED-DATA BY THE HEREIN NAMED COMPANY (AND ANY OF ITS AFFILIATES, PARTNERS, REPRESENTATIVES, AGENTS, CONSULTANTS AND EMPLOYEES) IS SUBJECT TO THE TERMS AND CONDITIONS AGREED UPON BETWEEN SCHLUMBERGER AND THE COMPANY, INCLUDING: (a) RESTRICTIONS ON USE OF THE RECORDED-DATA; (b) DISCLAIMERS AND WAIVERS OF WARRANTIES AND REPRESENTATIONS REGARDING COMPANY'S USE AND RELIANCE UPON THE RECORDED-DATA; AND (c) CUSTOMER'S FULL AND SOLE RESPONSIBILITY FOR ANY INFERENCE DRAWN OR DECISION MADE IN CONNECTION WITH THE USE OF THIS RECORDED-DATA.

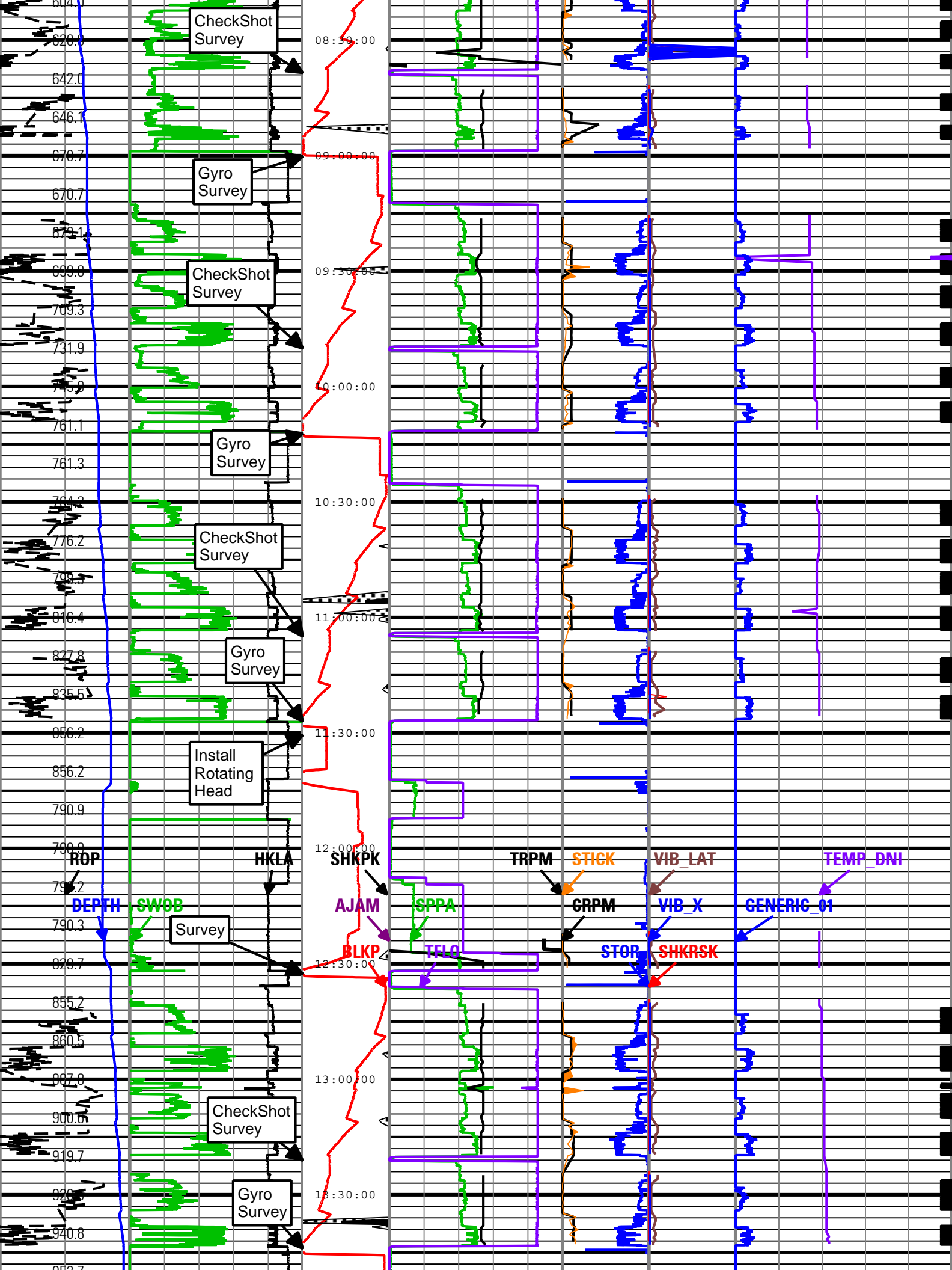
Contents

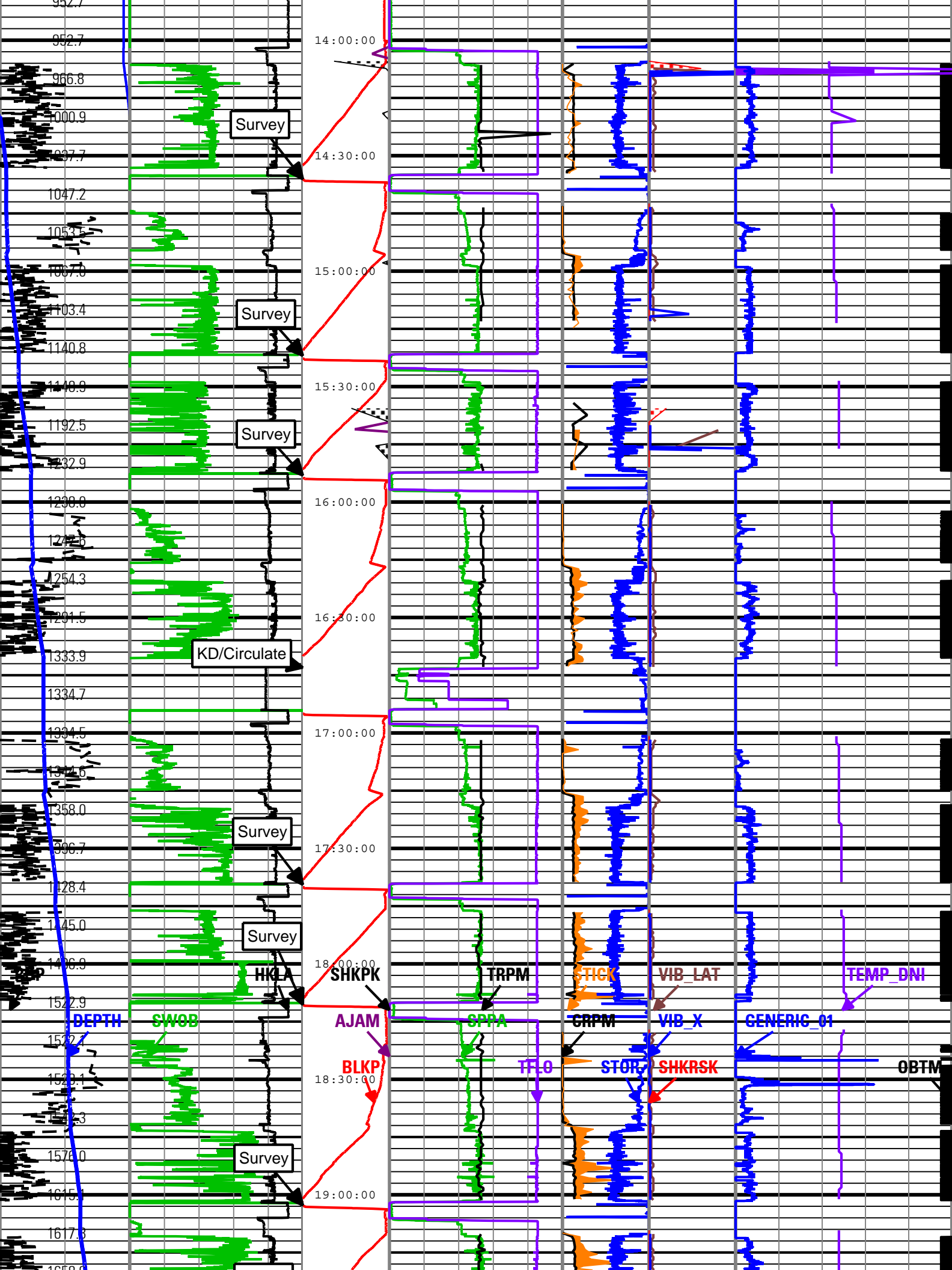
- 1. Header
- 2. Disclaimer
- 3. Contents
- 4. 001 PERFORM - Drilling Mechanics
 - 4.1 Software Version
 - 4.2 Pass Summary
 - 4.3 Log (PERFORM - Drilling Mechanics)
- 5. Run 2 PERFORM - Drilling Mechanics
 - 5.1 Software Version
 - 5.2 Pass Summary
 - 5.3 Log (PERFORM - Drilling Mechanics)

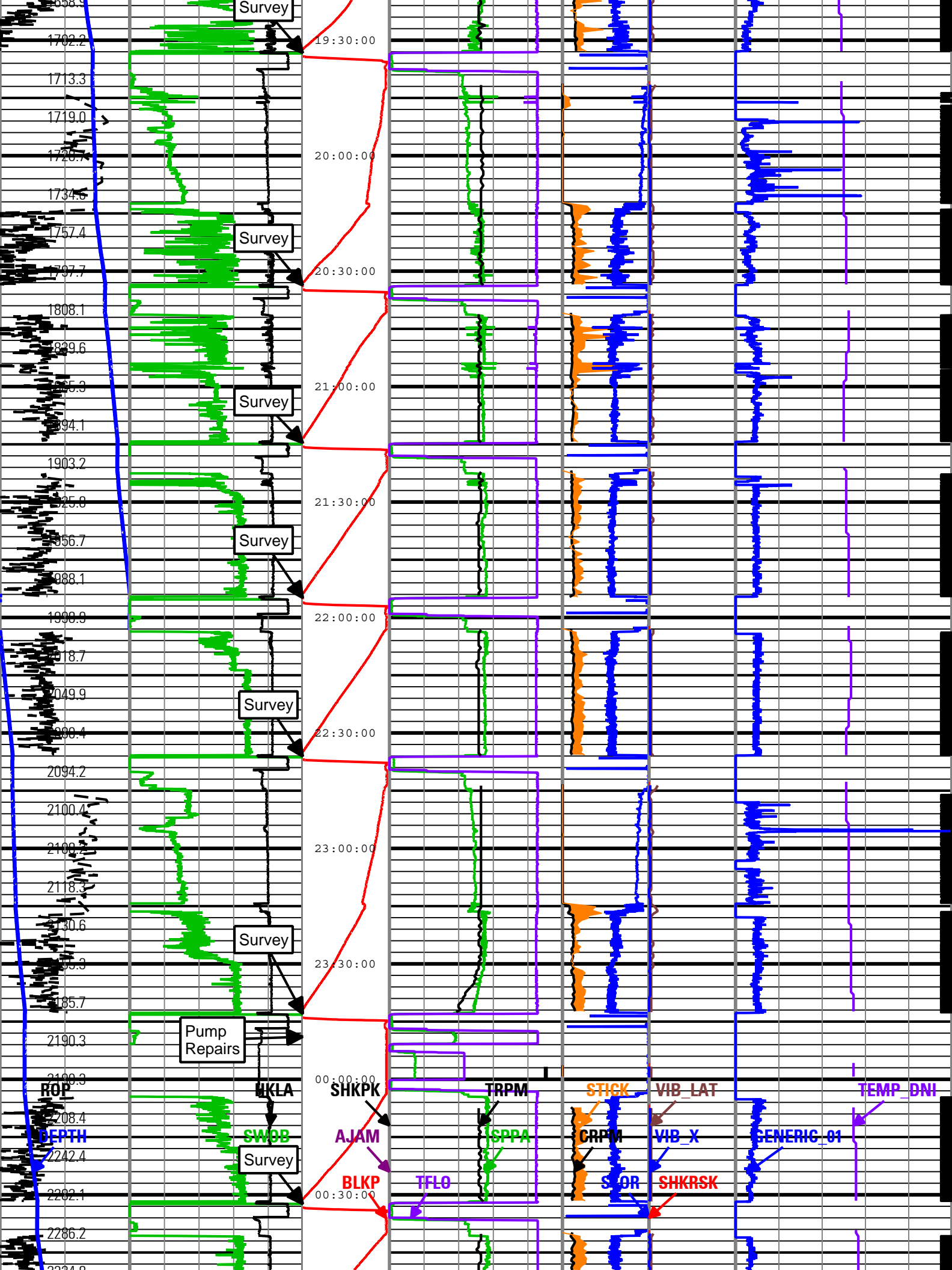
Shock Risk
(SHKRSK)

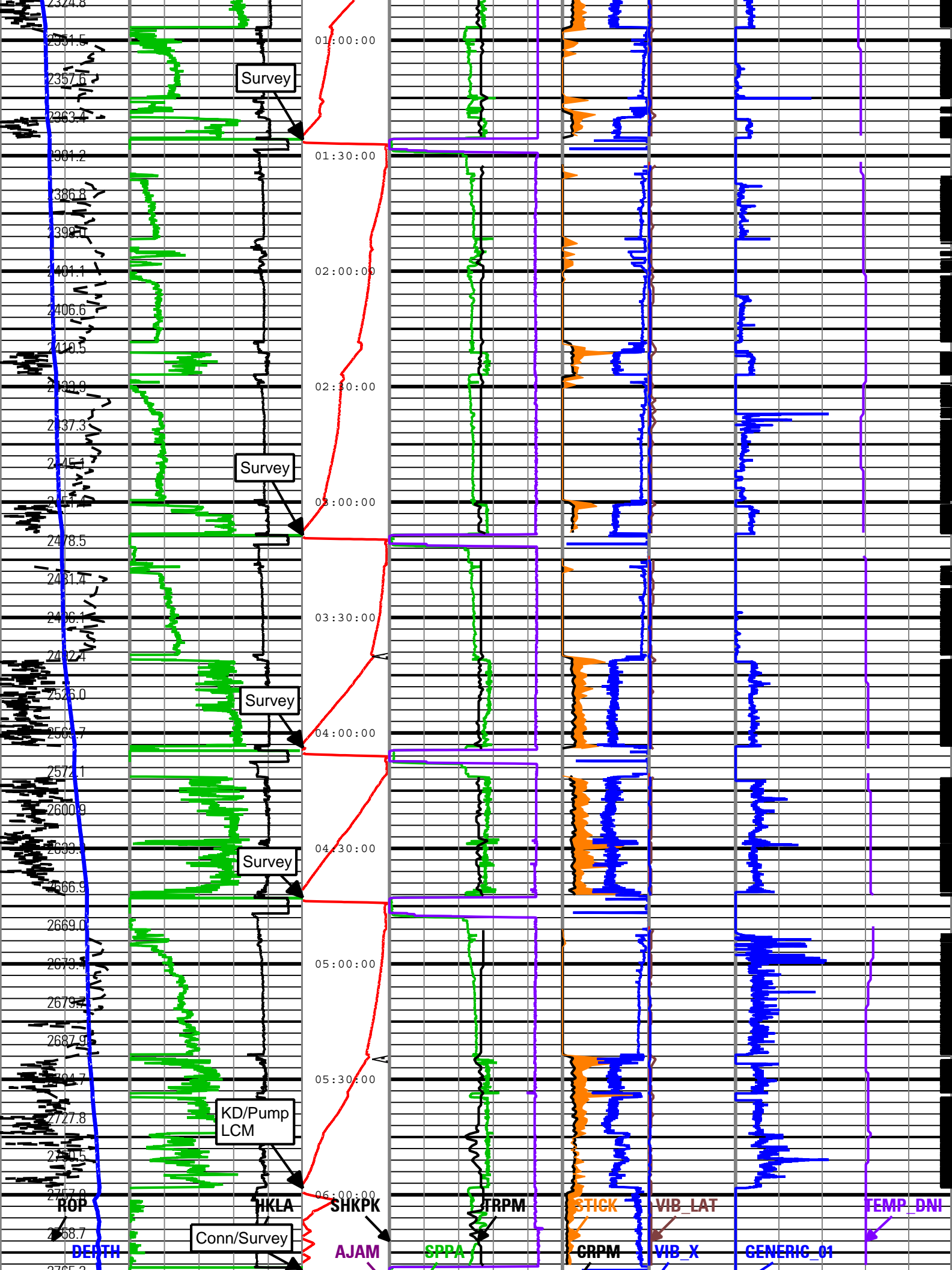


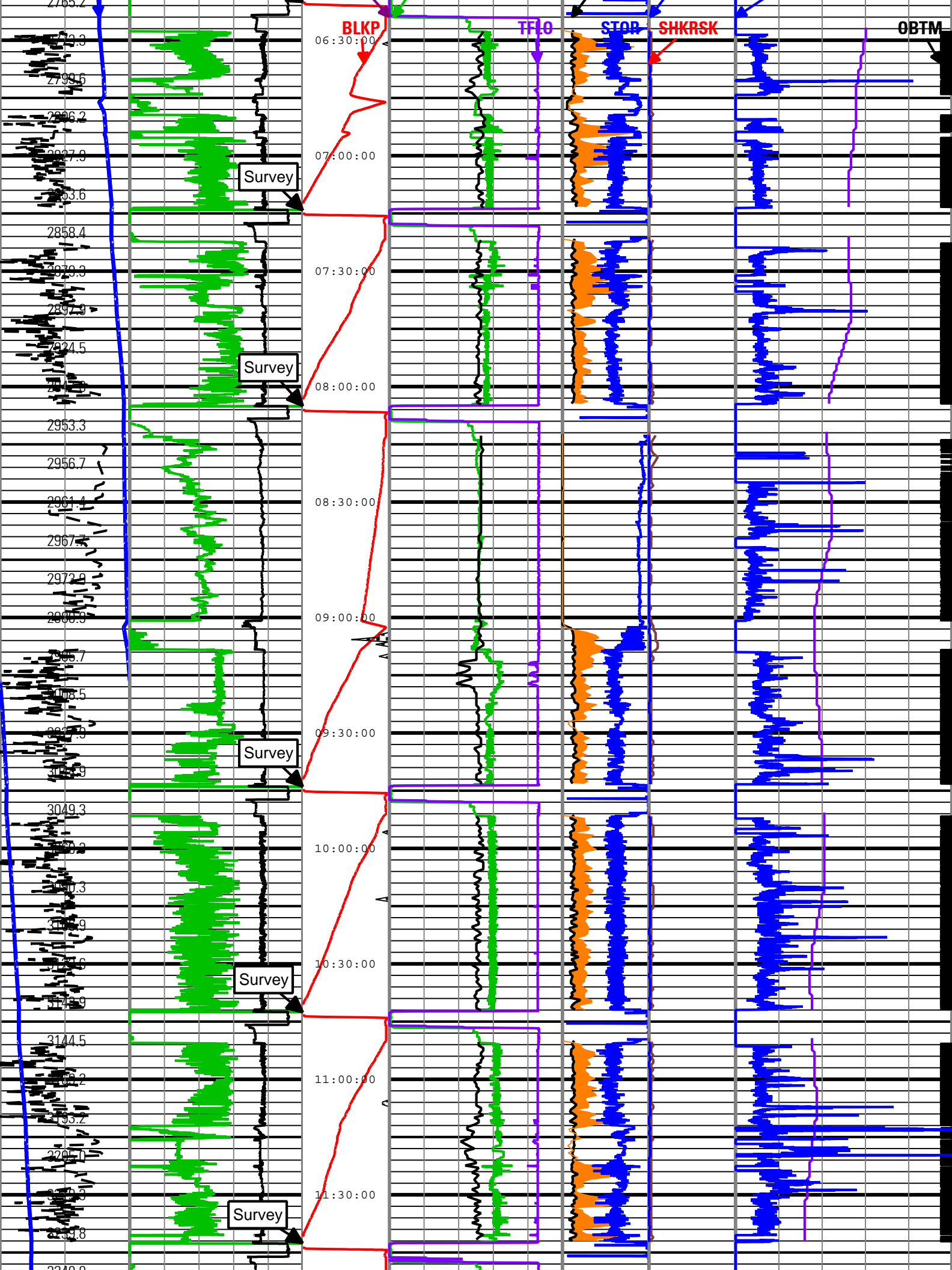


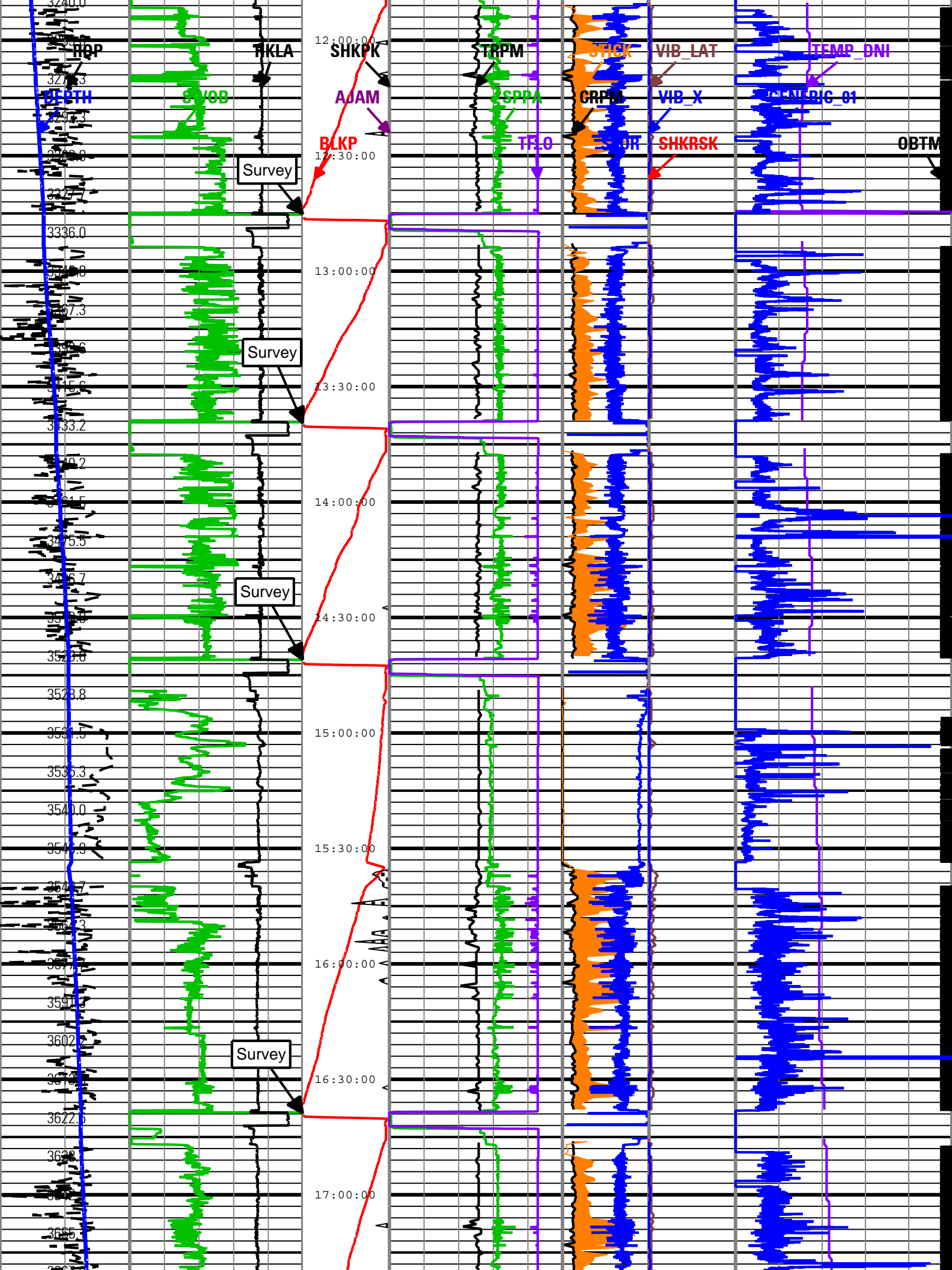


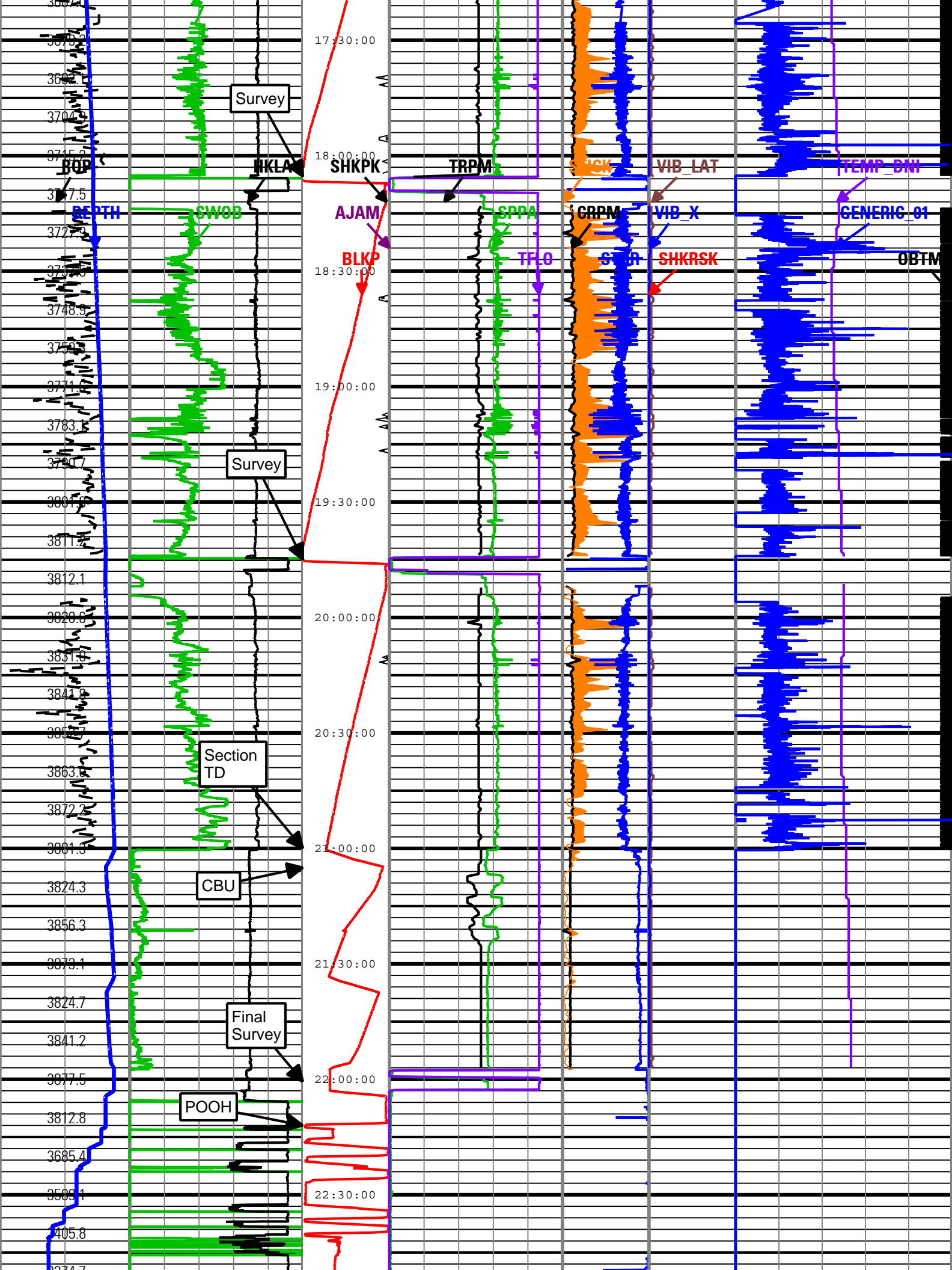


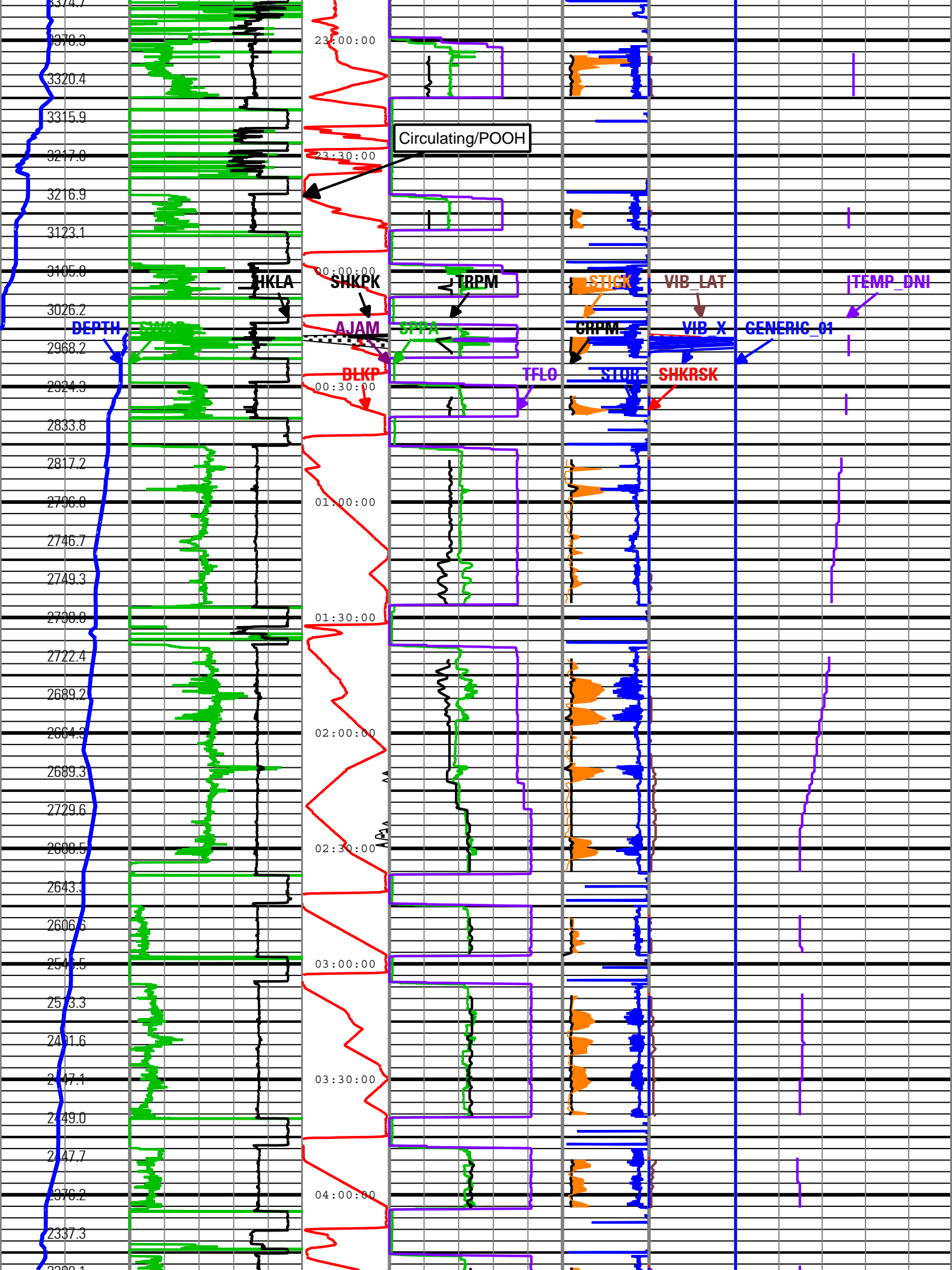


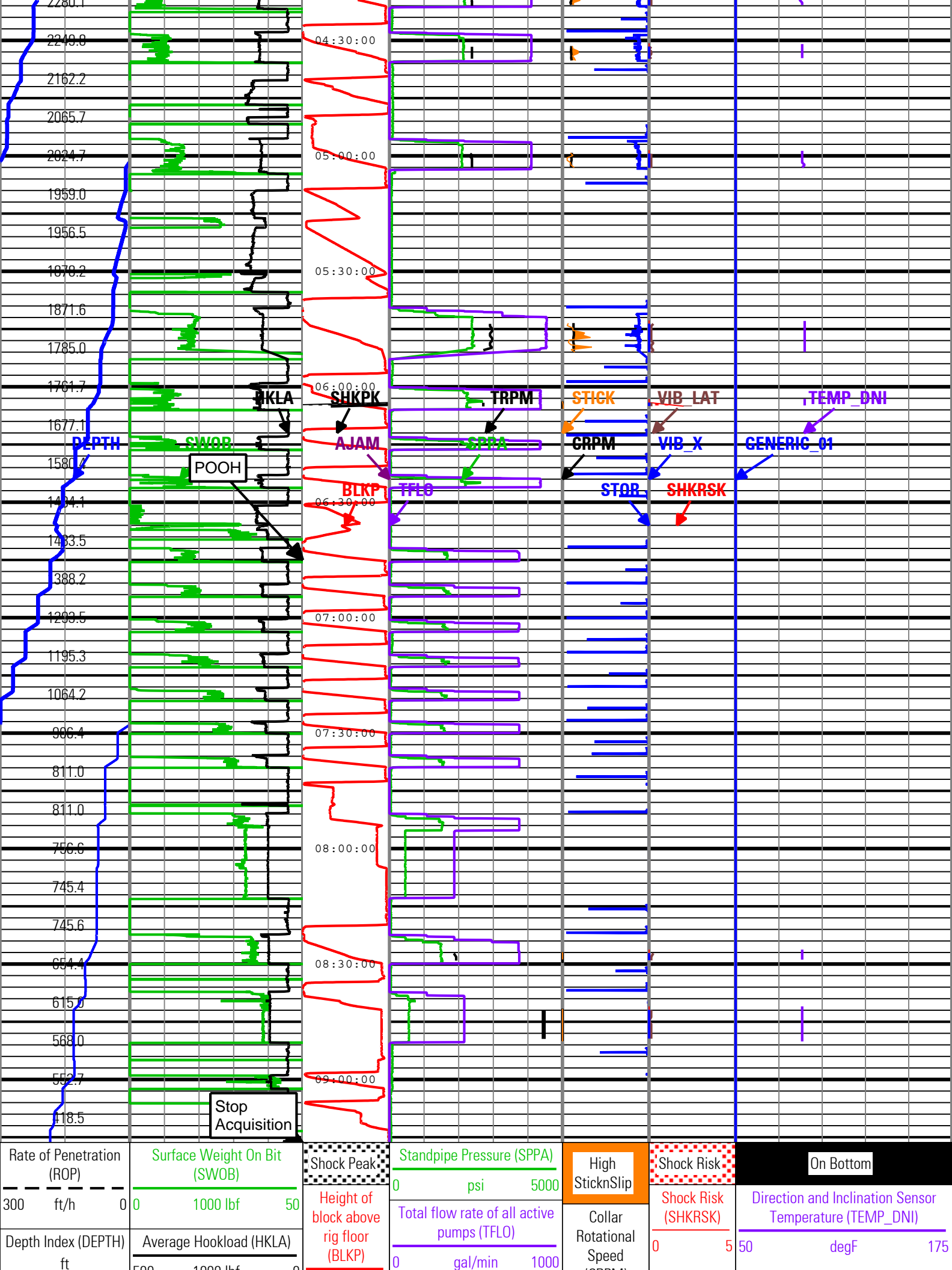










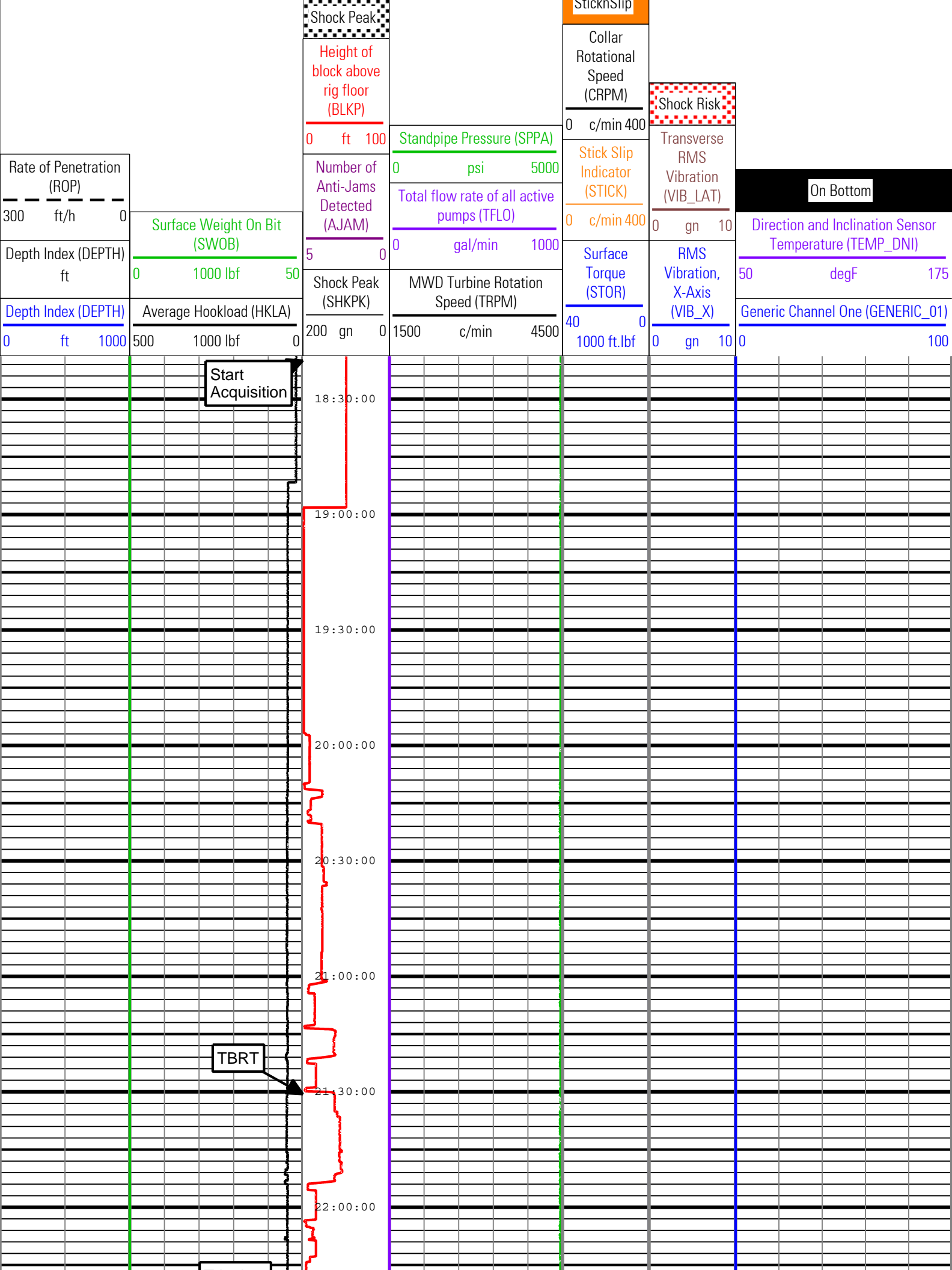


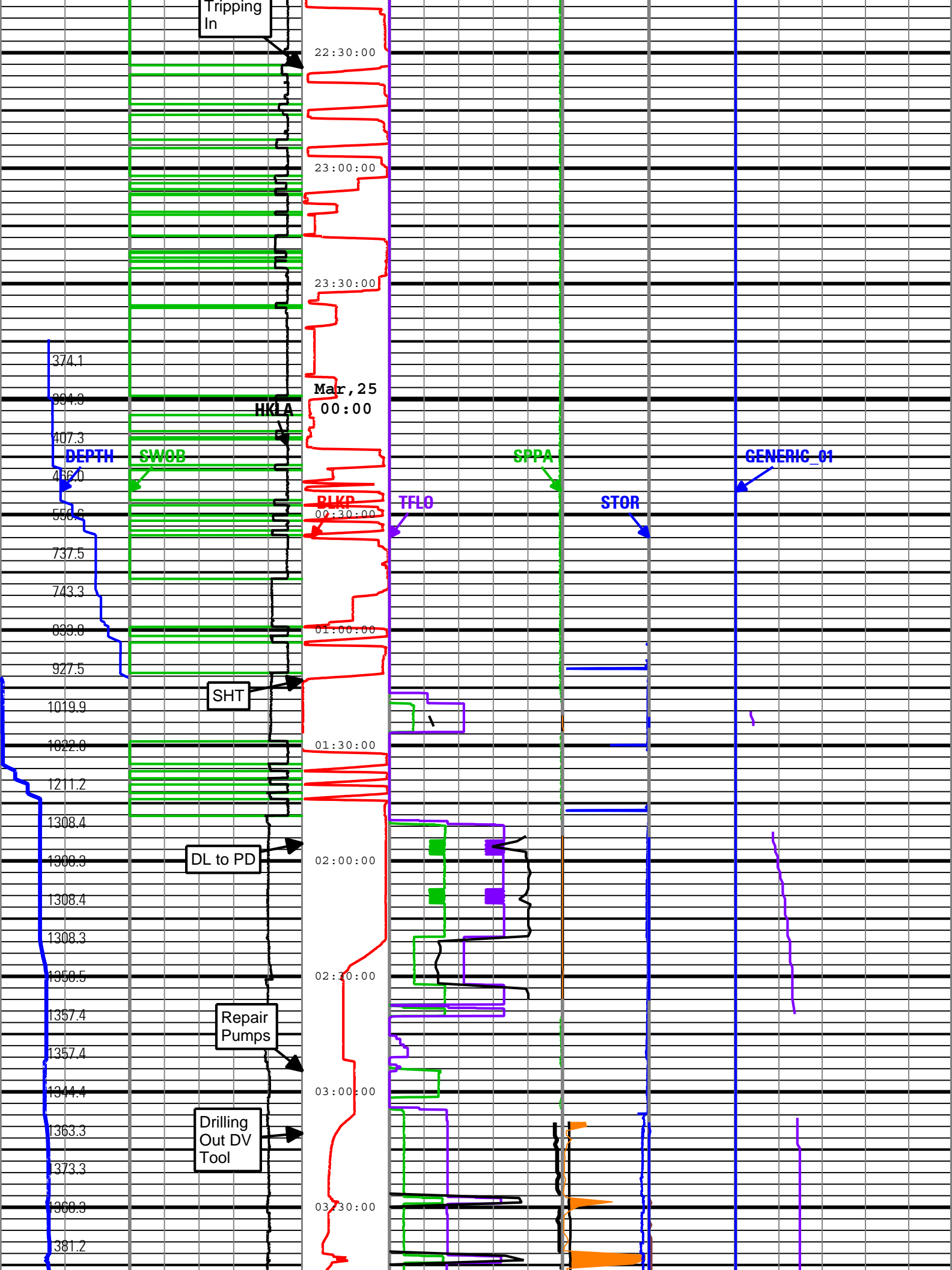
Description: TeleScope + ARC Drilling Mechanics Time RT Format: Log (PERFORM - Drilling Mechanics) Index Scale: 2 in per 3600 s Index Type: Time
Creation Date: 26-Mar-2010 15:20:49

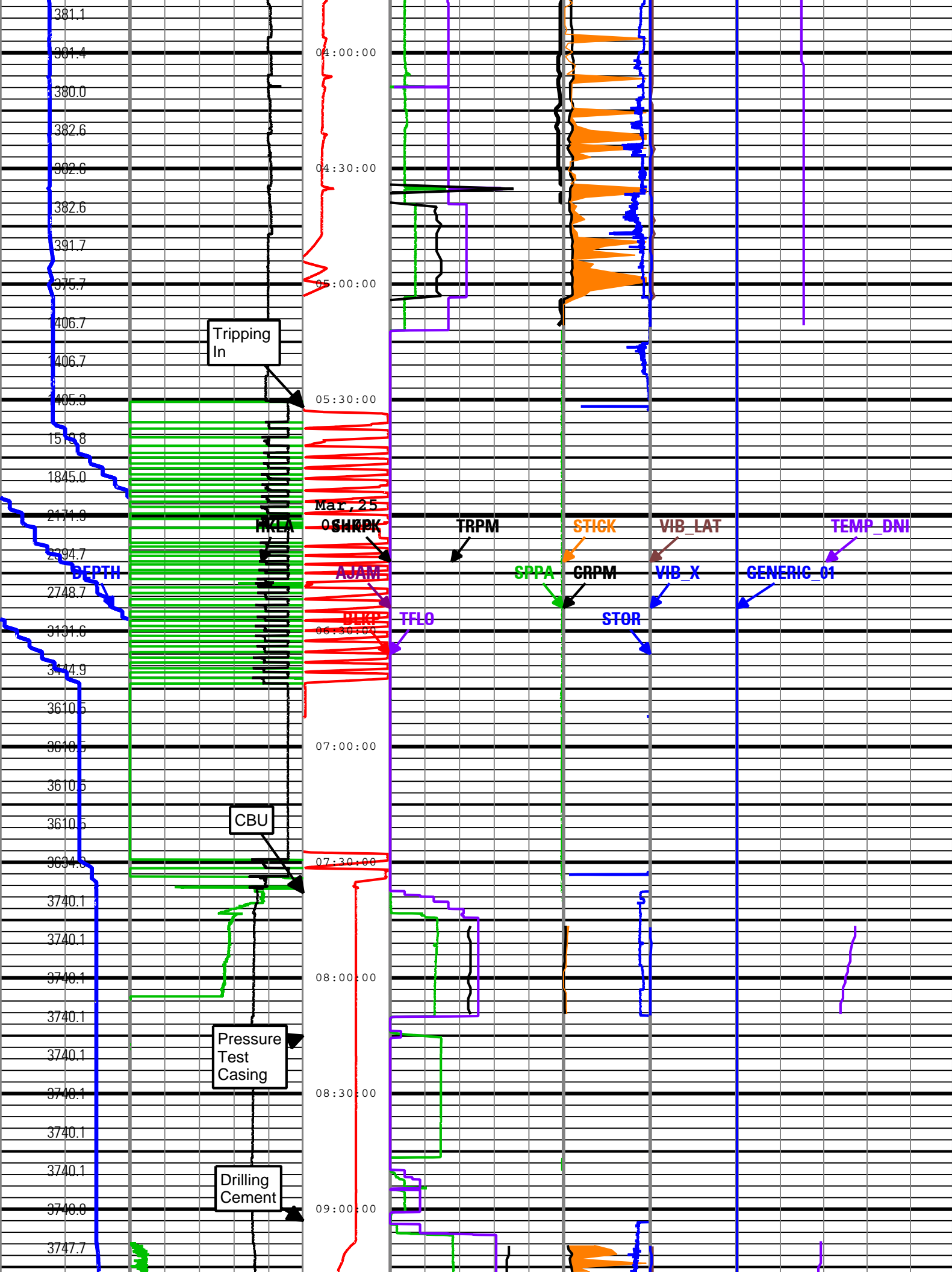
Description: TeleScope + ARC Drilling Mechanics Time RT Format: Log (PERFORM - Drilling Mechanics) Index Scale: 2 in per 3600 s Index Type: Time
Creation Date: 26-Mar-2010 15:20:58

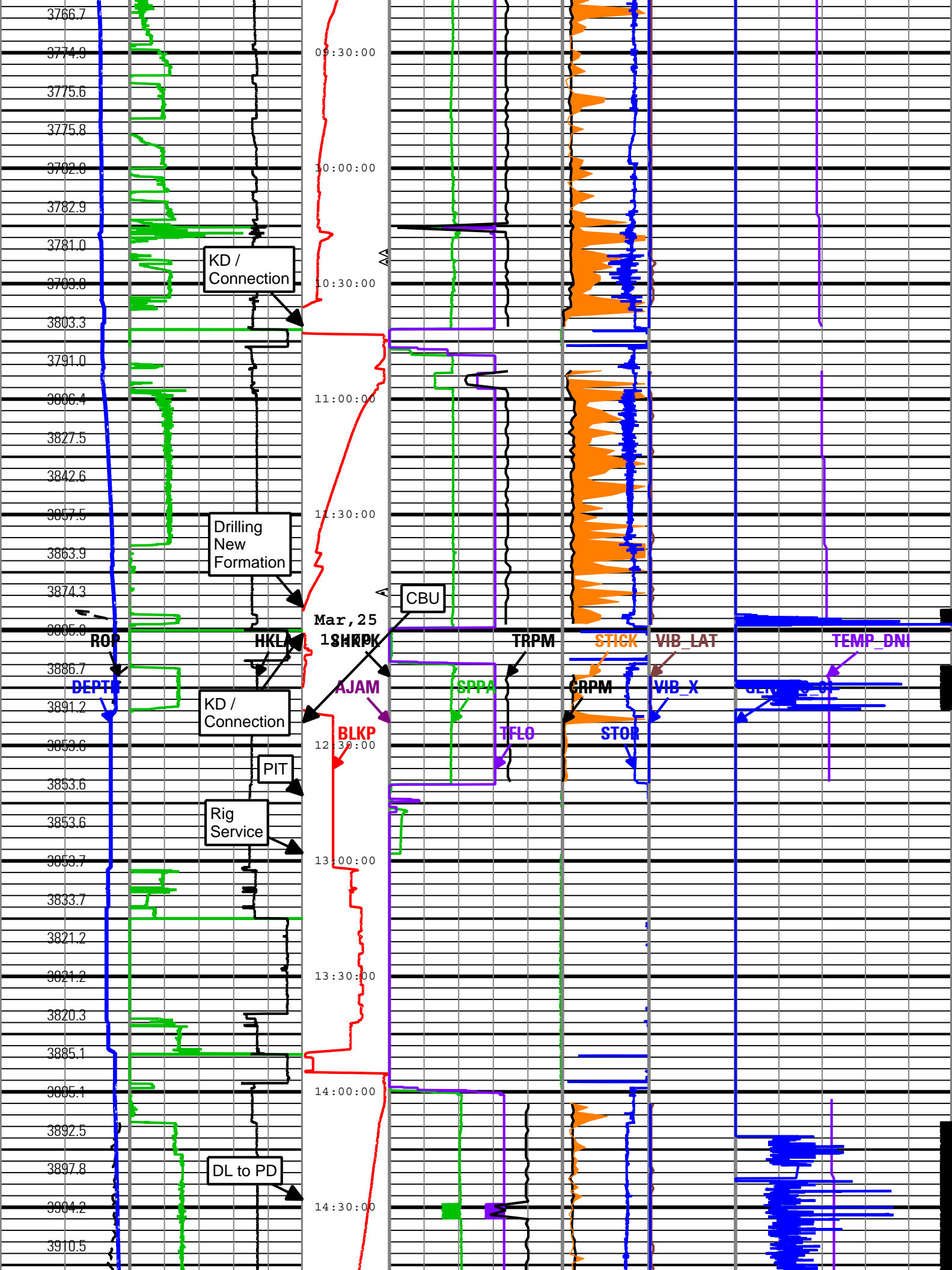
BLKP	DRILLING_SURFACE	ACQ - RT
CRPM	TELE675:TELE675	ACQ - RT
DEPTH	DnMWorkflow	ACQ - RT
GENERIC_01	DRILLING_SURFACE	ACQ - RT
HKLA	DRILLING_SURFACE	ACQ - RT
OBTM	DnMWorkflow	ACQ - RT
ROP	DRILLING_SURFACE	ACQ - RT
SHKPK	TELE675:TELE675	ACQ - RT
SPPA	DRILLING_SURFACE	ACQ - RT
STICK	TELE675:TELE675	ACQ - RT
STOR	DRILLING_SURFACE	ACQ - RT
SWOB	DRILLING_SURFACE	ACQ - RT
TEMP_DNI	TELE675:TELE675	ACQ - RT
TFLO	DRILLING_SURFACE	ACQ - RT
TRPM	TELE675:TELE675	ACQ - RT
VIB_LAT	TELE675:TELE675	ACQ - RT
VIB_X	TELE675:TELE675	ACQ - RT

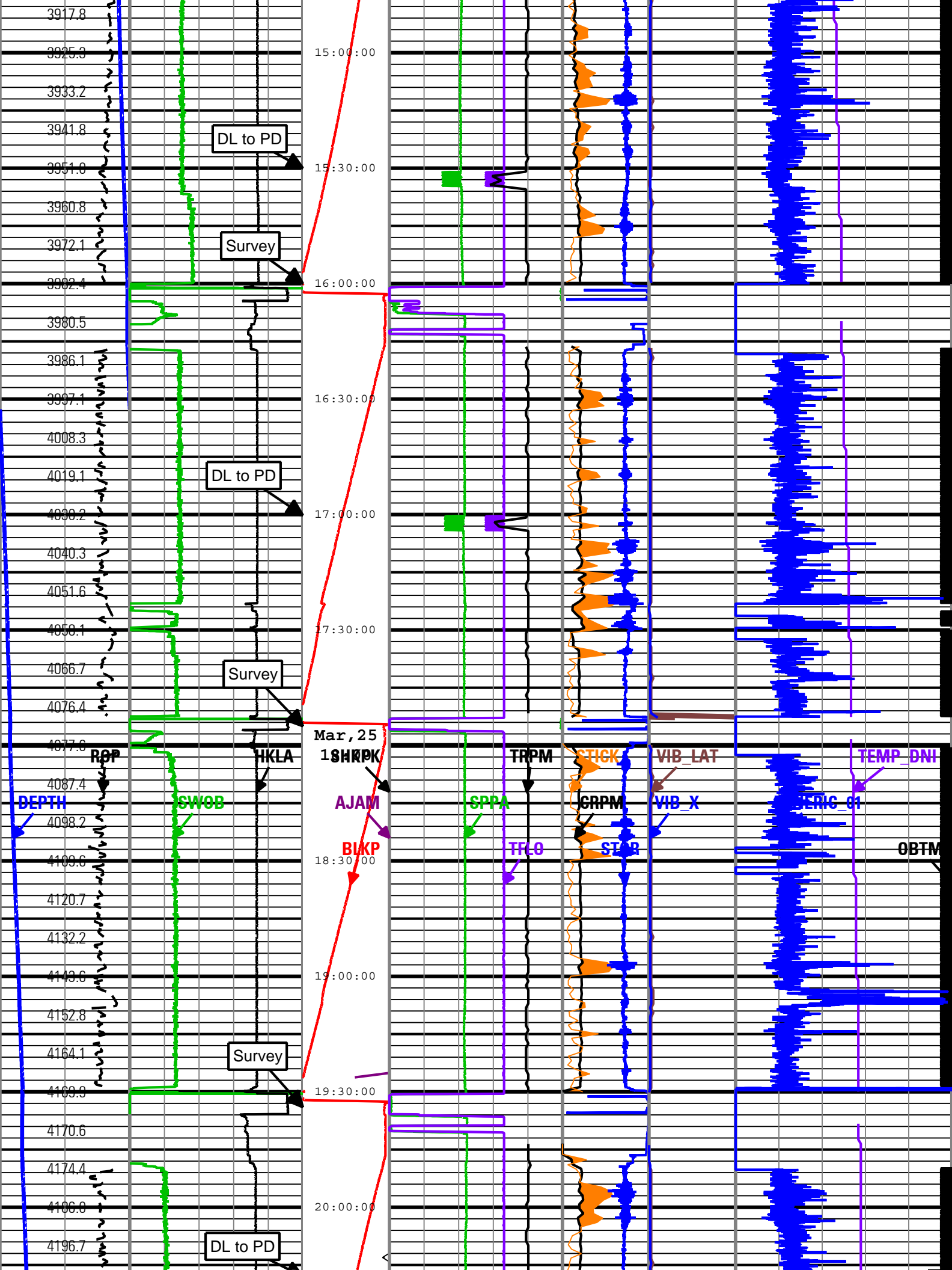
[illegible]

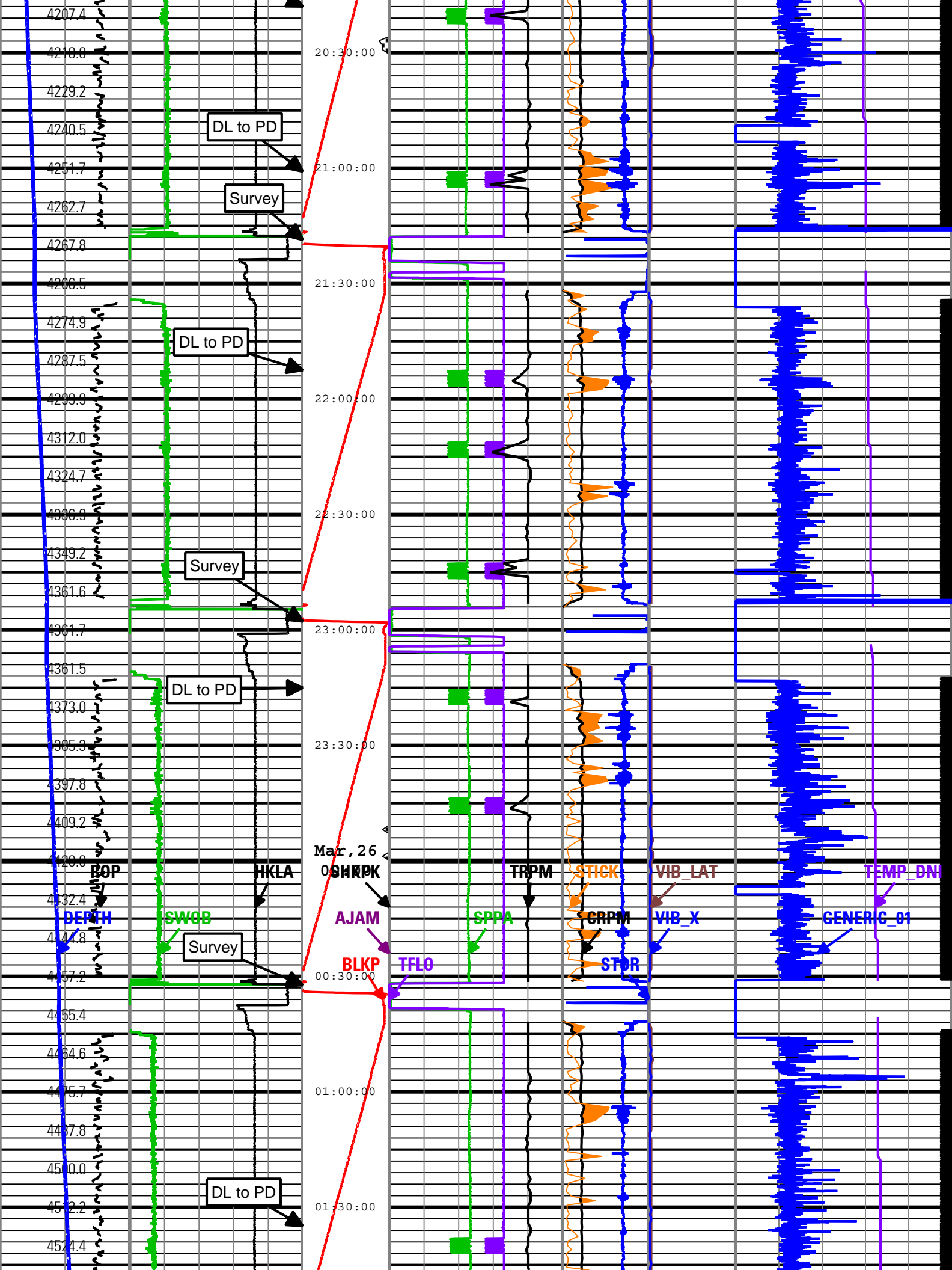


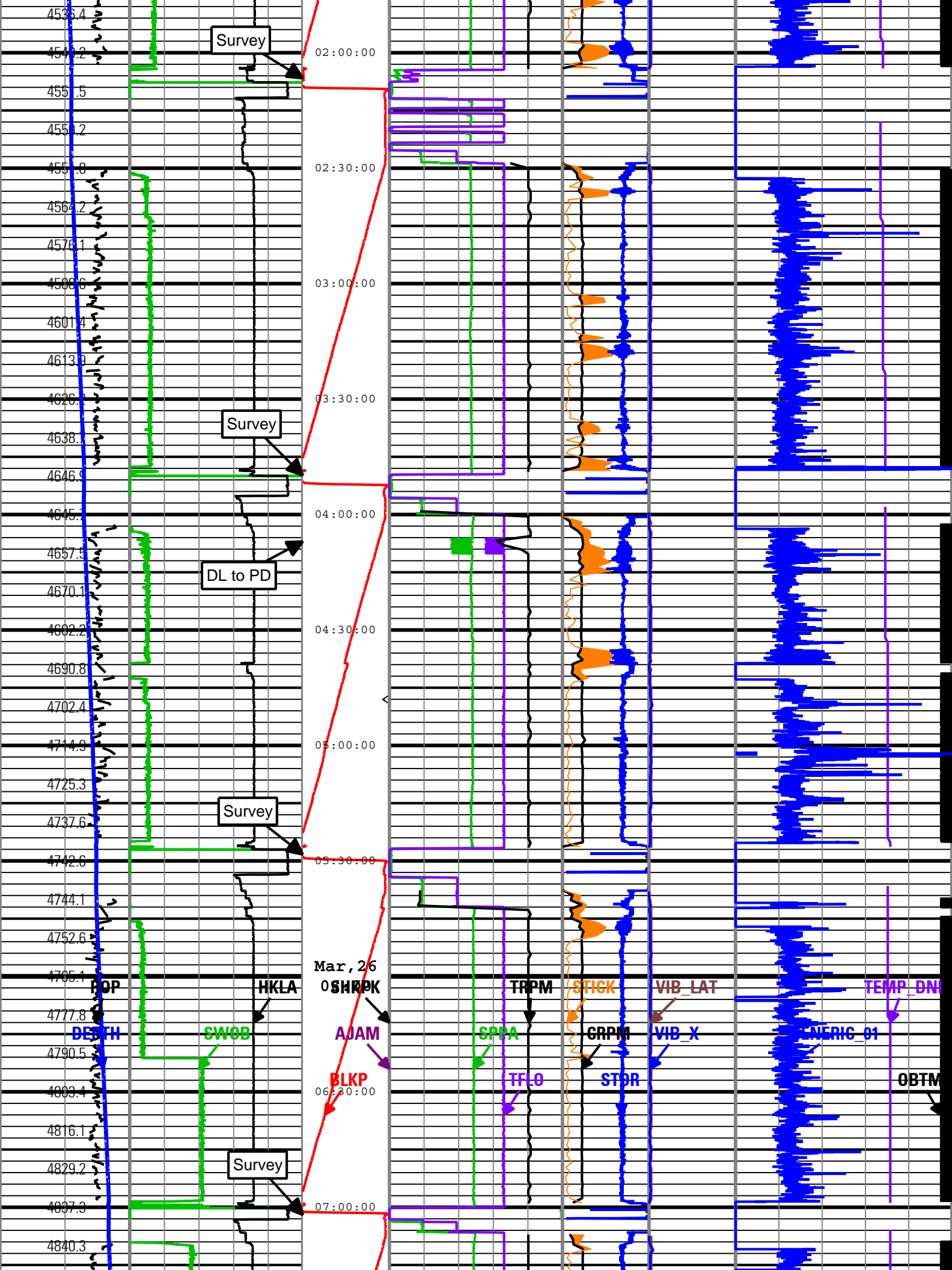


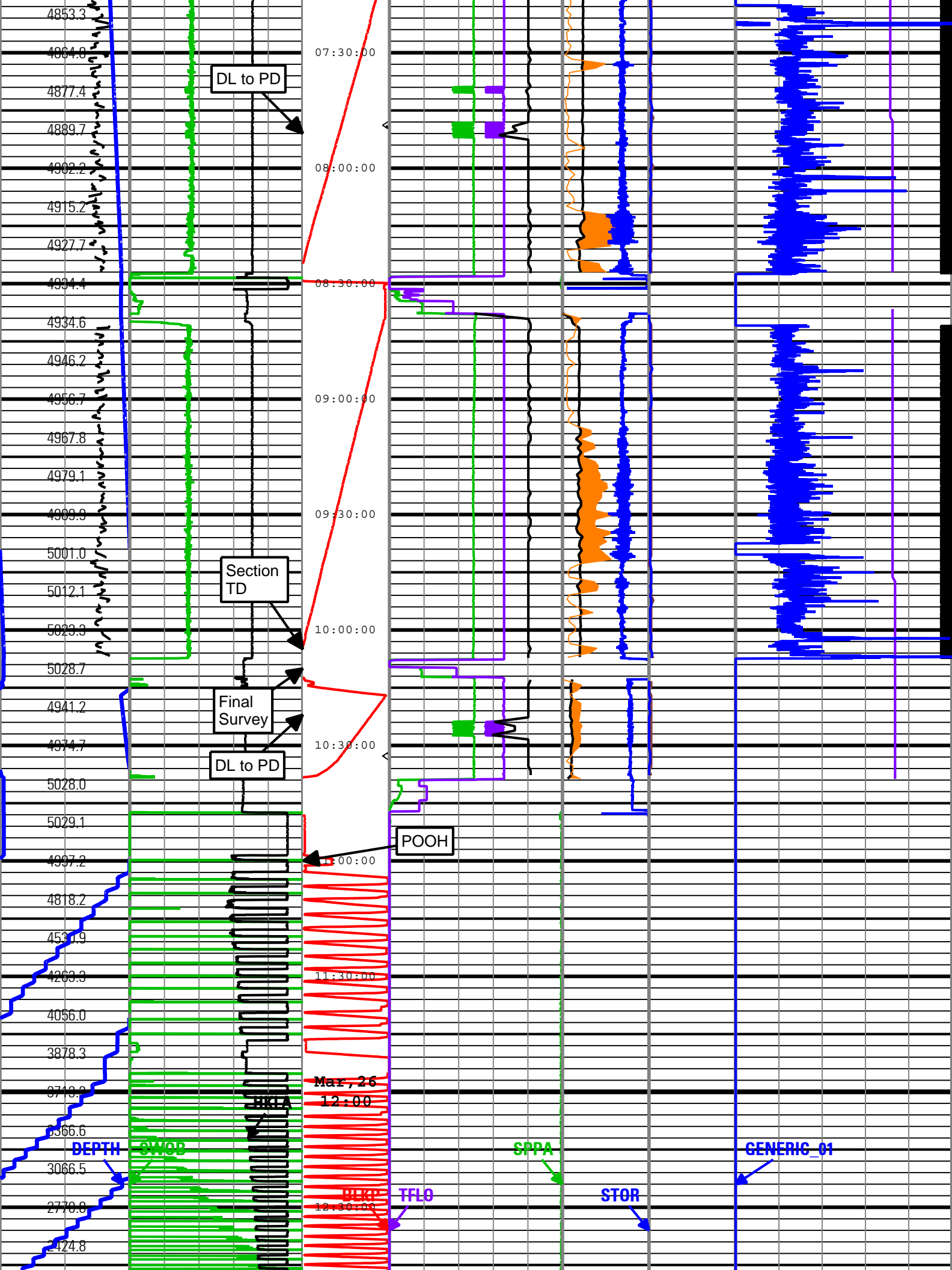


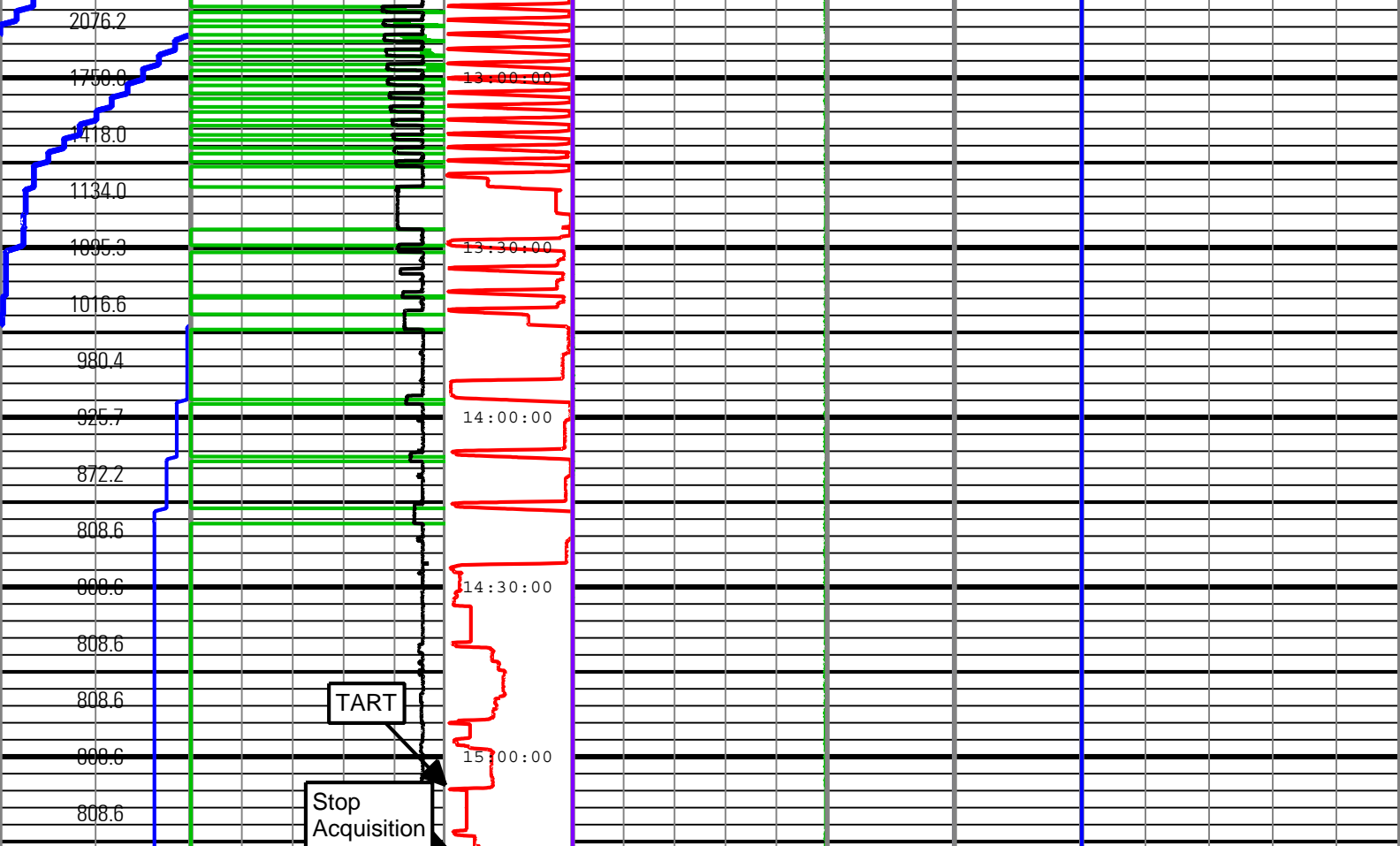












Rate of Penetration (ROP)	Surface Weight On Bit (SWOB)	Shock Peak	Standpipe Pressure (SPPA)	High SticknSlip	Shock Risk	On Bottom
300 ft/h 0	0 1000 lbf 50	Height of block above rig floor (BLKP)	0 psi 5000	Collar Rotational Speed (CRPM)	Transverse RMS Vibration (VIB_LAT)	Direction and Inclination Sensor Temperature (TEMP_DNI)
Depth Index (DEPTH) ft	Average Hookload (HKLA)	0 ft 100	Total flow rate of all active pumps (TFLO)	0 c/min 400	0 gn 10	50 degF 175
Depth Index (DEPTH) 0 ft 1000	500 1000 lbf 0	Number of Anti-Jams Detected (AJAM)	MWD Turbine Rotation Speed (TRPM)	Stick Slip Indicator (STICK)	RMS Vibration, X-Axis (VIB_X)	Generic Channel One (GENERIC_01)
		5 0	1500 c/min 4500	0 c/min 400	0 gn 10	0 100
		Shock Peak (SHKPK)		Surface Torque (STOR)		
		200 gn 0		40 0 1000 ft.lbf		

Description: TeleScope + ARC Drilling Mechanics Time RT Format: Log (PERFORM - Drilling Mechanics) Index Scale: 2 in per 3600 s Index Type: Time
Creation Date: 26-Mar-2010 15:20:58