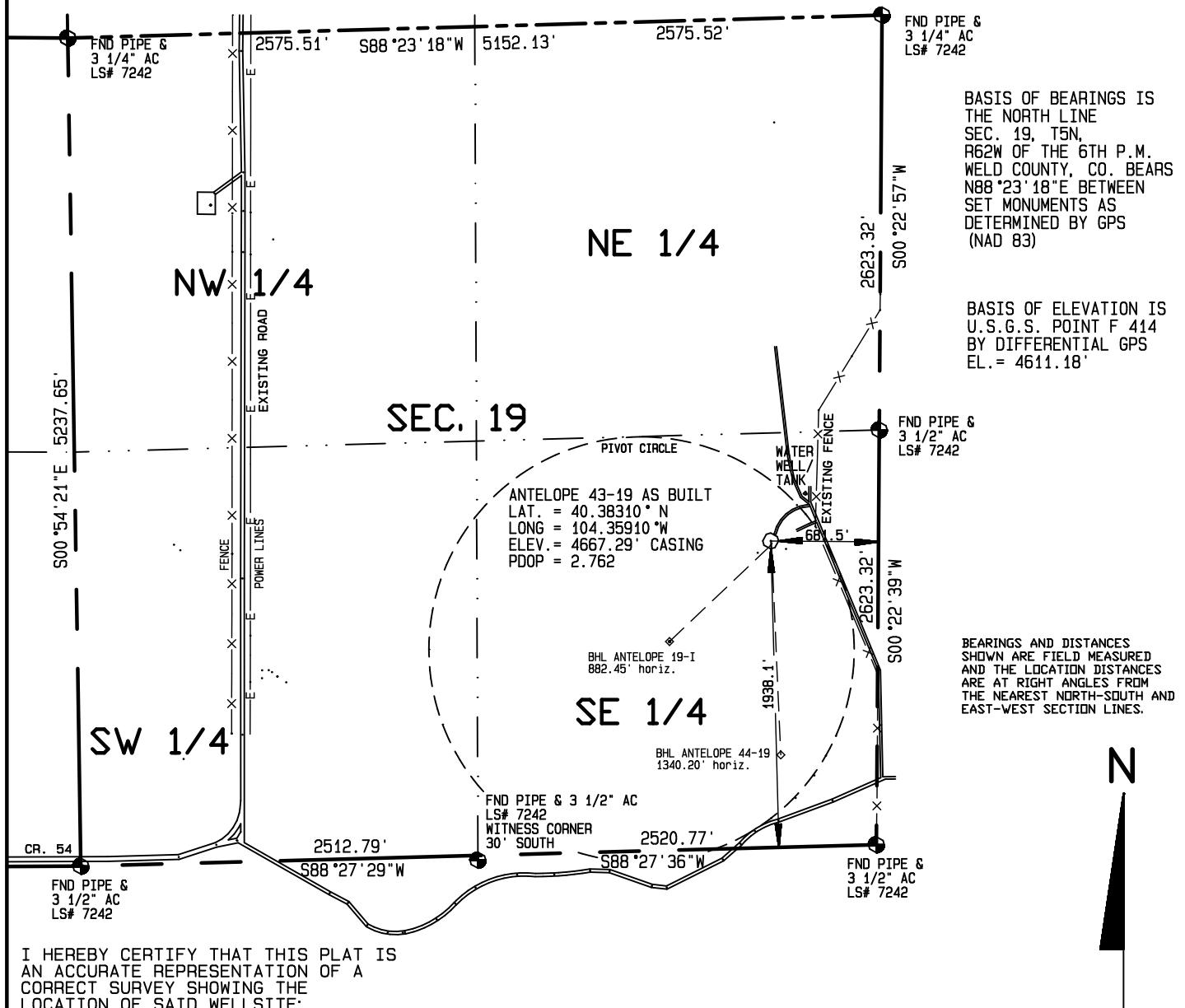


SURFACE HOLE LOCATIONS						BOTTOM HOLE LOCATIONS						
WELL		LAT.	LONG.	EL.	FSL	FEL	WELL		LAT.	LONG.	FSL	FEL
43-19	AB	40.38310°	104.35910°	4667.29'	1938.1'	681.5'	43-19		40.38310°	104.35910°	1938.1'	681.5'
19-I		40.38302°	104.35911°	4667.43'	1910.0'	682.3'	19-I		40.38135°	104.36134°	1319.6'	1317.8'
44-19	AB	40.38306°	104.35902°	4667.70'	1924.1'	676.8'	44-19		40.37938°	104.35894°	584.1'	608.8'

* AB designates an As Built location measured from the north rim of surface casing.

Visible improvements within 400 feet of the location include: water well/tank 367' northeast, fence 298' east. site lies 278' inside irrigation pivot circle.



I HEREBY CERTIFY THAT THIS PLAT IS AN ACCURATE REPRESENTATION OF A CORRECT SURVEY SHOWING THE LOCATION OF SAID WELLSITE:

1000 500 0 1000



Scale 1" = 1000'

Dan Griggs PLS# 38018

CONTRACT SURVEYORS, LTD.
COMPLETE SURVEYING AND GLOBAL POSITIONING

2133 SOUTH BELLAIRE STREET #14
DENVER COLORADO 80222
(303) 756-3695



CSL# 10104-44
REVISED

DATE OF FIELD WORK:

12 NOVEMBER, 2010

DATE OF DRAWING:

15 NOVEMBER, 2010

ANTELOPE 43-19 PAD SITE

. NE 1/4 SE 1/4 SEC. 19, T5N, R62W

BONANZA CREEK ENERGY OPERATING COMPANY, LLC

WELD COUNTY, COLORADO