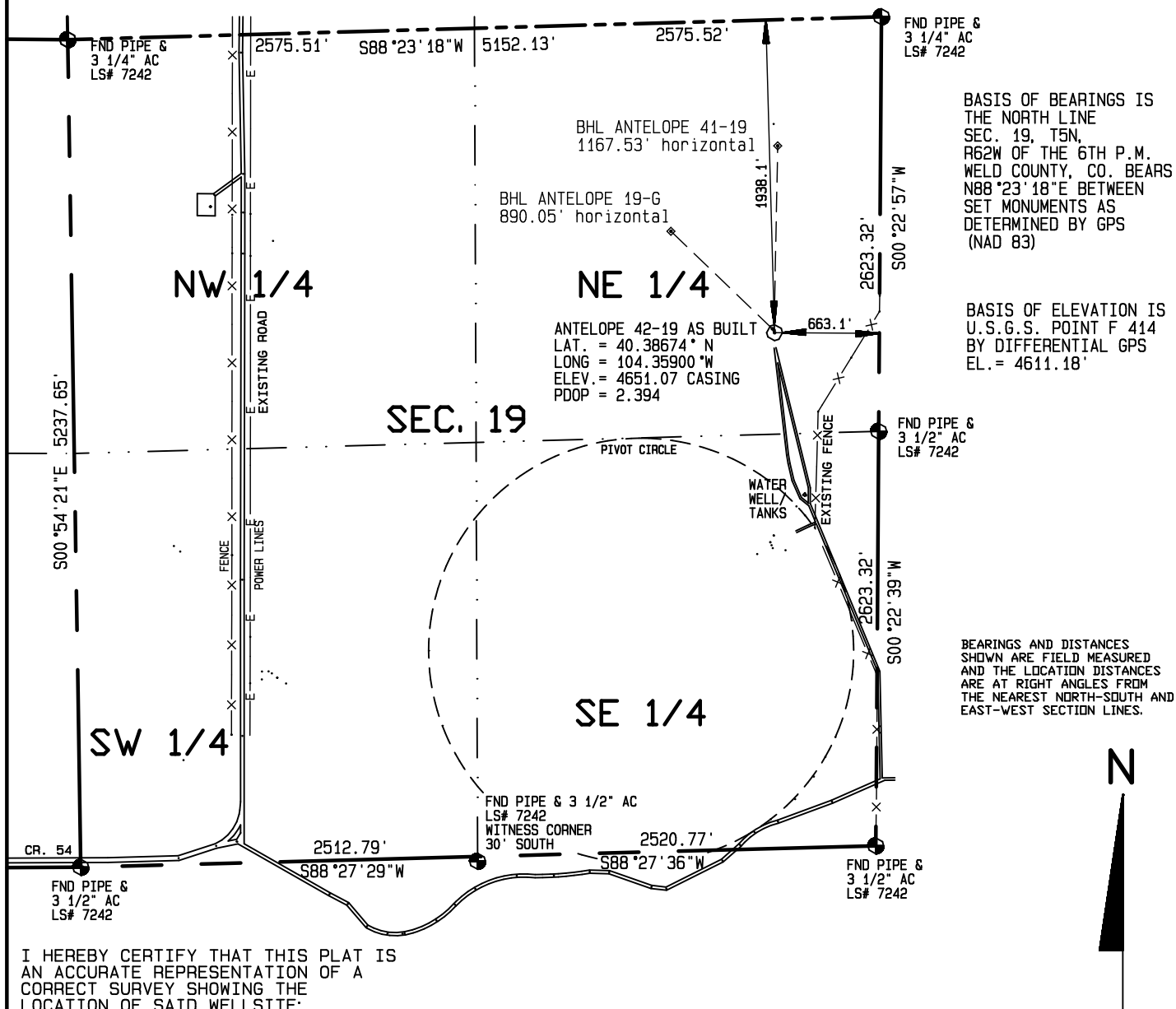


SURFACE HOLE LOCATIONS						BOTTOM HOLE LOCATIONS				
WELL	LAT.	LONG.	EL.	FNL	FEL	WELL	LAT.	LONG.	FNL	FEL
42-19 AB	40.38674°	104.35900°	4651.07	1978.9'	663.1'	42-19	40.38674°	104.35900°	1978.9'	663.1'
19-G	40.38680°	104.35906°	4651.34	1954.2'	678.0'	19-G	40.38850°	104.36134°	1319.1'	1323.2'
41-19 AB	40.38678°	104.35902°	4651.39	1964.0'	666.6'	41-19	40.38998°	104.35894°	797.8'	651.0'

\* AB designates As Built location, measured from north rim of surface casing.

There are no visible improvements within 400 feet of the location



I HEREBY CERTIFY THAT THIS PLAT IS AN ACCURATE REPRESENTATION OF A CORRECT SURVEY SHOWING THE LOCATION OF SAID WELLSITE:

Dan Griggs PLS# 38018

**CONTRACT SURVEYORS, LTD.**  
COMPLETE SURVEYING AND GLOBAL POSITIONING

2133 SOUTH BELLAIRE STREET #14  
DENVER COLORADO 80222  
(303) 756-3695



CSL# 10104-43  
REVISED

DATE OF FIELD WORK:

12 NOVEMBER, 2010

DATE OF DRAWING:

15 NOVEMBER, 2010

ANTELOPE 42-19 PAD SITE

. SE 1/4 NE 1/4 SEC. 19, T5N, R62W

BONANZA CREEK ENERGY OPERATING COMPANY, LLC

WELD COUNTY, COLORADO

1000 500 0 1000



Scale 1" = 1000'

