

# T6S, R95W, 6th P.M.

## WILLIAMS PRODUCTION RMT COMPANY

Well location, FEDERAL PA 343-20, located as shown in Lot 8 of Section 20, T6S, R95W, 6th P.M., Garfield County, Colorado.

### BASIS OF ELEVATION

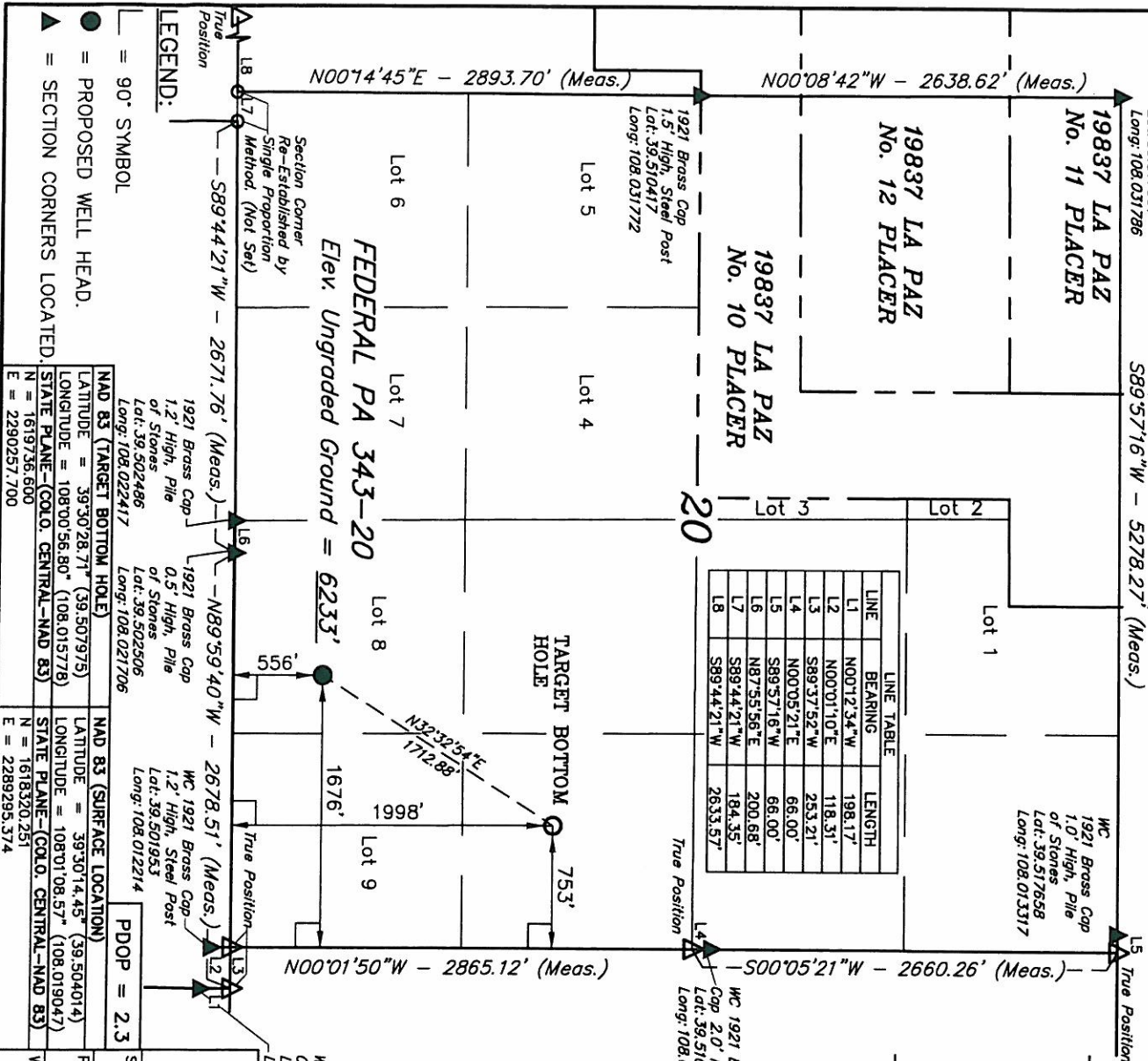
SPOT ELEVATION AT THE NORTHWEST CORNER OF SECTION 30, T5S, R95W, 6th P.M. TAKEN FROM THE FORKED GULCH QUADRANGLE, COLORADO, GARFIELD COUNTY, 7.5 MINUTE SERIES (TOPOGRAPHICAL MAP) PUBLISHED BY THE UNITED STATES DEPARTMENT OF THE INTERIOR, GEOLOGICAL SURVEY. SAID ELEVATION IS MARKED AS BEING 5966 FEET.

### BASIS OF BEARINGS

NOTE: SEE CURRENT FOOTAGE PLAT #6 FOR EXISTING IMPROVEMENT WITHIN 400' OF THE PROPOSED WELL DISTURBANCE.

BASIS OF BEARINGS IS A G.P.S. OBSERVATION.

LINE	BEARING	LENGTH
L1	N00°12'34"W	198.17'
L2	N00°01'10"E	118.31'
L3	S89°37'52"W	253.21'
L4	N00°05'21"E	66.00'
L5	S89°57'16"W	66.00'
L6	N87°55'56"E	200.68'
L7	S89°44'21"W	184.35'
L8	S89°44'21"W	2633.57'



SCALE 1" = 1000'

PARTY B.H. B.B. D.R.B. REFERENCES C.L.O. PLAT

WEATHER COOL FILE WILLIAMS PRODUCTION RMT COMPANY

DATE SURVEYED: 05-17-10 DATE DRAWN: 06-12-10

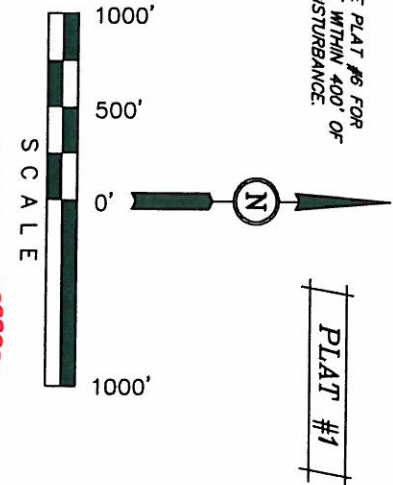
85 SOUTH 200 EAST - VERNAL, UTAH 84078 (435) 789-1017

THIS IS TO CERTIFY THAT THE ABOVE PLAT WAS PREPARED FROM FIELD NOTES OF ACTUAL SURVEY MADE BY ME OR UNDER MY SUPERVISION AND THAT THE SAME ARE TRUE AND CORRECT TO THE BEST OF MY KNOWLEDGE AND BELIEF.

Revised: 10-06-10 D.R.B.  
Revised: 07-07-10 D.R.B.

WC 1921 Brass Cap 1.2" High  
Lat: 39.502167  
Long: 108.013114

REGISTERED LAND SURVEYOR  
STATE OF COLORADO  
No. 17329



### CERTIFICATE

LEGEND:

— = 90° SYMBOL

● = PROPOSED WELL HEAD.

▲ = SECTION CORNERS LOCATED.

NAD 83 (TARGET BOTTOM HOLE)	NAD 83 (SURFACE LOCATION)
LATITUDE = 39°50'28.71" (39.507975)	LATITUDE = 39°50'14.45" (39.504014)
LONGITUDE = 108°00'56.80" (108.015776)	LONGITUDE = 108°01'08.57" (108.019047)
STATE PLANE-(COLO. CENTRAL-NAD 83)	STATE PLANE-(COLO. CENTRAL-NAD 83)
N = 1619736.600	N = 1618320.251
E = 2290257.700	E = 2289295.374